



MEMORANDUM TO: Project Engineers
Project Design Engineers

FROM: W. J. Rogers, P. E.
State Bridge Design Engineer

DATE: May 27, 1997

SUBJECT: DESIGN MANUAL ERRATA

Following is a list of errata contained in the Design Manual revision dated 2/6/97. Please make the appropriate corrections in your copy of the manual.

English Manual Errata

pg. 14 - 3-1-1 future bituminous wearing surface should be 20 # / sf not 1 # / sf

[pg. 32 - Keep Fig. 5-2, Const. Limits for Culvert](#)

pg. 51 - 7-2-1 (a), 2, (e) Use # 4 dowels @ 1' -1" centers not 1' -3" centers. Fig. 7-3 is correct.

[pg. 89 - Keep Fig. 7-1 sheet 1 of 10](#)

pg. 158 - 45" girder - w = 583 # / ft

pg. 253 - Delete 1st 6 lines of text on page

Metric Manual Errata

pg. 16 - 3-1-12 Tension for cored slabs should be 0.25 (f' ci

[pg. 32 - Keep Fig. 5-2, Const. Limits for Culvert](#)

pg. 46A - Delete note regarding sheet piling from (mm), (2)

pg. 51 - (2), (e) 380 mm centers should be 340 mm centers

pg. 197 - 8-3-1, (a) Single row cap width should be 1.120 m for 508 mm piles

pg. 252 - Delete last 3 lines on page

WJR/RGW/ap

cc: T. V. Rountree, P. E.

N. M. Salmon, P. E.



[Back to Structures Main Page](#)

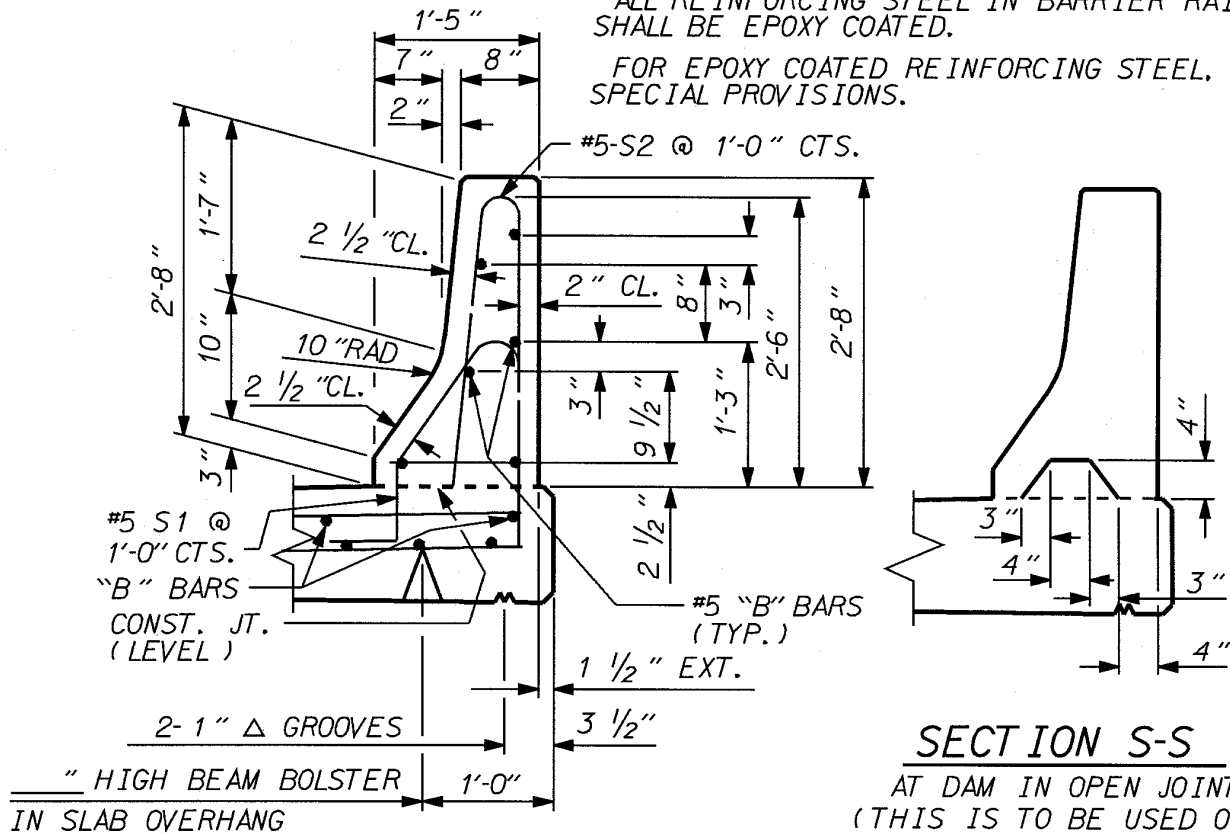
Last Updated: 8/11/98 by: Steven Rackley

[E-mail Structure Design](#)

NOTES ON THE PLANS

ALL REINFORCING STEEL IN BARRIER RAILS SHALL BE EPOXY COATED.

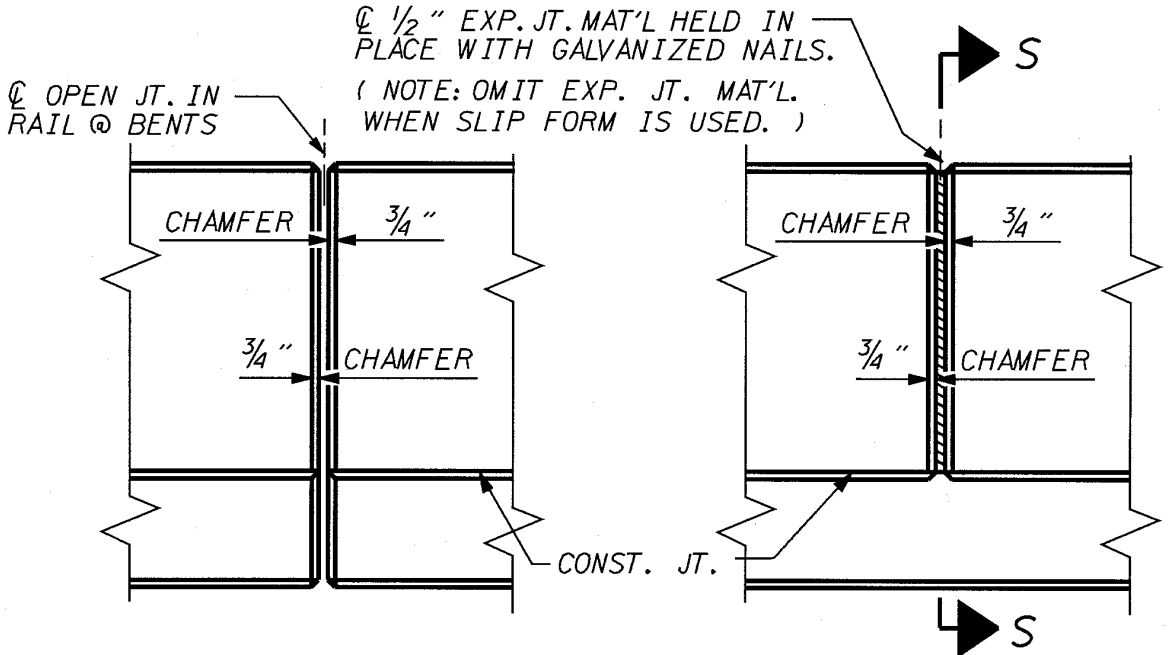
FOR EPOXY COATED REINFORCING STEEL, SEE SPECIAL PROVISIONS.



SECTION THRU RAIL

SECTION S-S

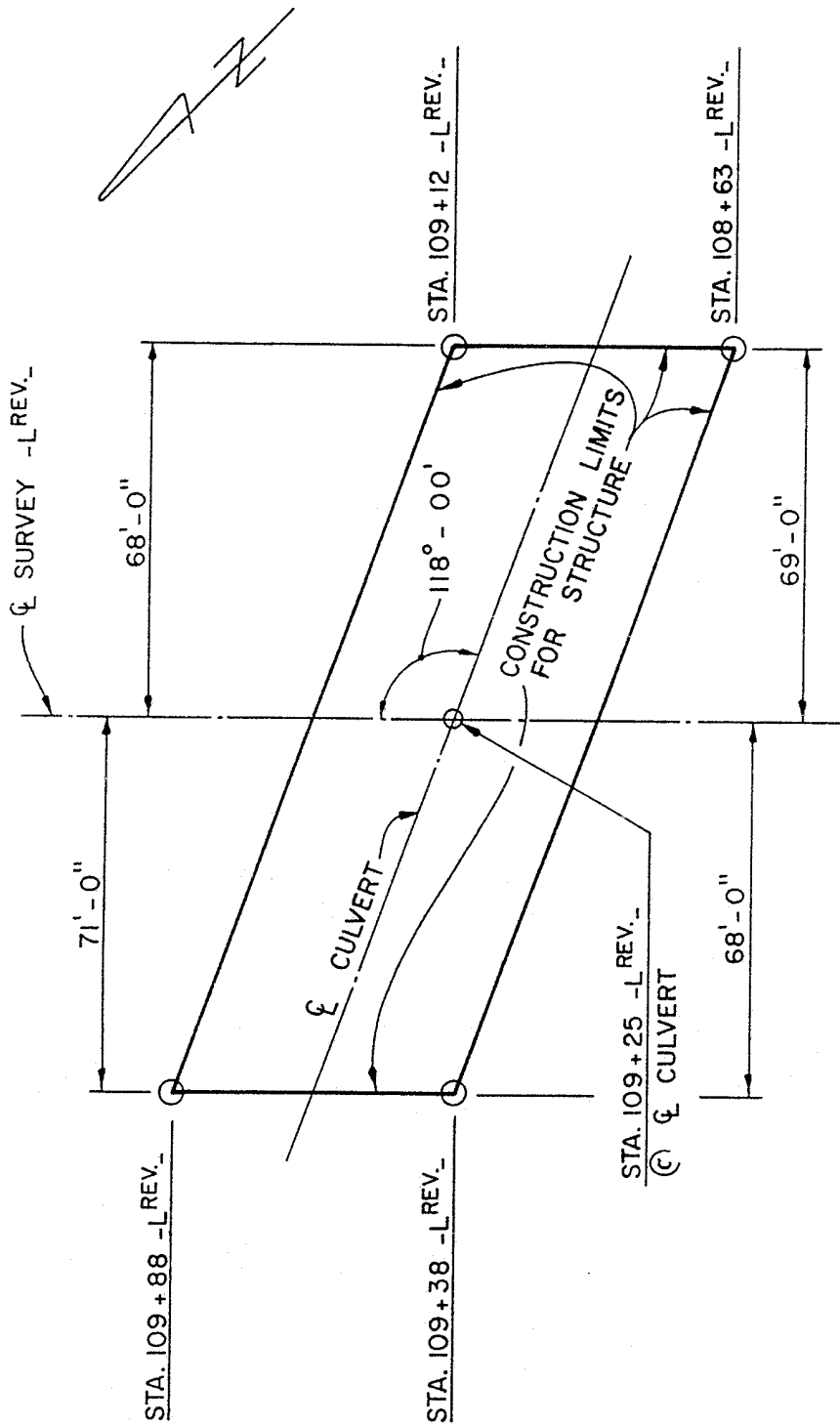
AT DAM IN OPEN JOINT
(THIS IS TO BE USED ONLY
WHEN SLIP FORM IS USED)



ELEVATION AT EXPANSION JOINTS

BARRIER RAIL DETAILS

WITHOUT WEARING SURFACE



CONSTRUCTION LIMITS SKETCH

SINGLE 6' x 6' R.C.B.C.

PROJECT : 9.8062715

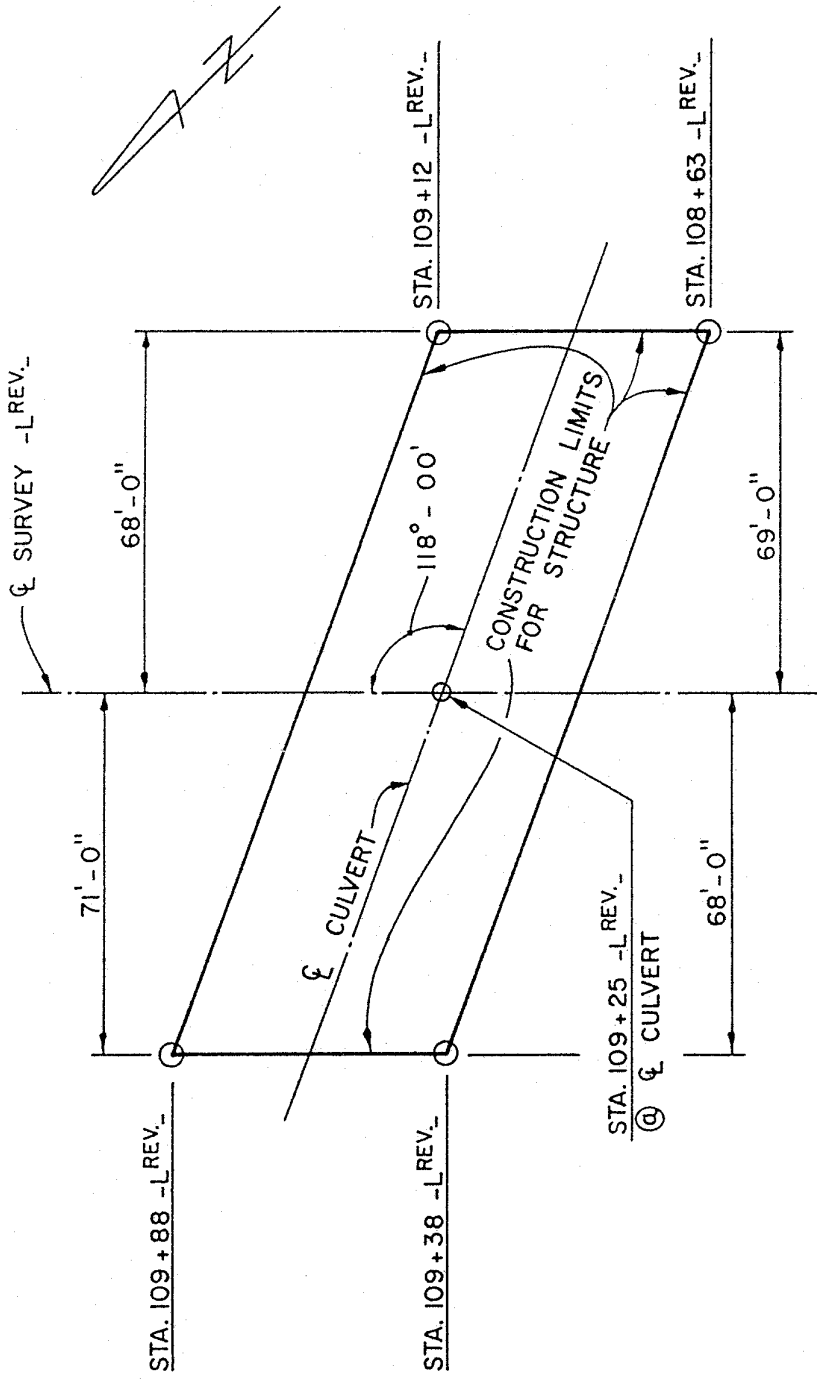
COUNTY : ROBESON

STATION : 109+25 -L REV.

DATE : NOV. 19, 1973

SKETCH BY : D.L.S.

✓ BY : J.A.J. 11-19-73



CONSTRUCTION LIMITS SKETCH

SINGLE 6' x 6' R.C.B.C.

PROJECT : 9.8062715
 COUNTY : ROBESON
 STATION : 109+25 -L REV.
 DATE : NOV. 19, 1973
 SKETCH BY : D.L.S.
 ✓ BY : J.A.J. 11-19-73

Example for illustrative purposes only, not converted to SI units.