

Annual Report

Term V, Year 3:
July 1, 2024 – June 30, 2025



For Submittal to:
NC Department of Environmental Quality
Division of Energy, Mineral, and Land Resources

Submitted by:
NC Department of Transportation
NPDES Permit No. NCS000250

August 31, 2025

This page is intentionally left blank.

Recommended for approval:

| | |
|--|-------------------------------------|
| <div data-bbox="284 273 581 373"> <p>DocuSigned by:</p> <p><i>Matthew S. Lauffer</i></p> <p>7A9B8D53FF5D47B...</p> </div> <p>Matthew S. Lauffer, PE State Hydraulics Engineer Hydraulics Unit</p> | <p>08/21/2025</p> <hr/> <p>Date</p> |
| <div data-bbox="284 525 568 625"> <p>DocuSigned by:</p> <p><i>Jeremy Goodwin</i></p> <p>BB3E6F0F6F83445...</p> </div> <p>Jeremy A. Goodwin, PE State Roadside Environmental Engineer Roadside Environmental Unit</p> | <p>08/21/2025</p> <hr/> <p>Date</p> |
| <div data-bbox="284 772 553 873"> <p>Signed by:</p> <p><i>Patrick A. Norman</i></p> <p>34F914AC31694A5...</p> </div> <p>Patrick A. Norman, PE Chief Engineer North Carolina Department of Transportation</p> | <p>08/21/2025</p> <hr/> <p>Date</p> |

"I certify, under penalty of law, that this document and all attachments were prepared under my direction or supervision in accordance with a system designed to assure that qualified personnel properly gather and evaluate the information submitted. Based on my inquiry of the person or persons who manage the system, or those persons directly responsible for gathering information, the information submitted is, to the best of my knowledge and belief, true, accurate, and complete. I am aware that there are significant penalties for submitting false information, including the possibility of fines and imprisonment for knowing violations."

| | |
|---|-------------------------------------|
| <div data-bbox="284 1352 508 1453"> <p>Signed by:</p> <p><i>J. R. Hopkins</i></p> <p>F06A6A5878A7469...</p> </div> <p>Joey R. Hopkins Secretary North Carolina Department of Transportation</p> | <p>08/25/2025</p> <hr/> <p>Date</p> |
|---|-------------------------------------|

This page is intentionally left blank.

This report was prepared and submitted to be compliant with North Carolina Department of Transportation's (NCDOT's) National Pollutant Discharge Elimination System (NPDES) stormwater discharge permit (NCS000250) requirement under Part 4.2 of the permit issued May 1, 2022 (Term V permit). This Annual Report includes an assessment of the activities performed under the permit for the fiscal year (July 1, 2024 – June 30, 2025). This period is also referred to herein as Term V Permit Year 3 (or PY3).

This Annual Report follows the format that mimics the general guidance provided by North Carolina Department of Environment Quality (NCDEQ) and includes appropriate information to accurately describe the progress, status, and results of the Department's permitted programs. This Annual Report includes specific annual reporting metrics identified in NCDOT's Transportation Separate Storm Sewer System - Stormwater Management Plan (TS4SMP) update, which was approved by NCDEQ on December 18, 2023. TS4SMP resubmittals for NCDEQ approval are not required because NCDOT has only made minor edits to the TS4SMP following PY2 and PY3, which is noted to NCDEQ during the Annual Report submittals. Additionally, the Annual Report assesses the Department's compliance with the permit, provides information on the establishment of appropriate legal authorities, inspections, and enforcement actions where applicable, and includes specific annual reporting metrics identified in NCDOT's TS4SMP for each permitted program area. The TS4SMP effectively serves as NCDOT's five-year business plan outlining the major activities to be performed to comply with the permit along with annual reporting metrics. It is the intent of NCDEQ that the reporting metrics contained in this Annual Report serve as the basis of future annual reports. Hence, this Annual Report contains a brief introduction which is then followed by the detailed TS4SMP tabular summary of the Department's Highway Stormwater Program best management practices (BMPs), measurable goals, schedule for implementation, and reporting metrics for this permit year, as well as anticipated/ planned program activities for the next two years. NCDOT's self-assessment for PY3 indicates that the Department was in compliance with the requirements of the TS4SMP.

Highway Stormwater Program staff continued to integrate the Term V permit requirements into the Department's various permit compliance programs during PY3. As anticipated, most programs have remained substantially similar to existing programs. However, several permit programs require significant changes over the course of this five-year permit term. These are detailed in Section 2 of this report.

During this permit term, on September 26-27, 2024 Hurricane Helene hit North Carolina and greatly impacted western North Carolina, the citizens of North Carolina, and the traveling public. The storm and flooding caused a wide swath of destruction to properties throughout western NC and destroyed or caused severe damage to NCDOT roadways, bridges, rail lines, and facilities in western NC, including over 9,400 NCDOT sites, resulting in closure of 1,400 NCDOT roads and damaging 818 NCDOT bridges. Through the support provided by NCDOT staff from all 14 Divisions and NCDOT contractor partners, NCDOT has repaired and reopened many roadways and bridges (97% roads, 52% bridges, 59% large culverts, and 99% small culverts as of May 2025). Some major repair sites are ongoing. The Department anticipates a multi-year recovery and rebuilding effort. Hurricane Helene also impacted several NCDOT

maintenance facilities and stormwater control measures, which is noted in NCDOT's respective permit program areas.

The NPDES permit authorizes NCDOT to discharge stormwater runoff from general roadways including weigh stations and tolling facilities, construction activities disturbing greater than one acre, borrow pits/waste piles, industrial facilities, office buildings, rest areas, and NCDOT-owned railways. Activities conducted by the North Carolina Turnpike Authority and I-77 Mobility Partners are also covered under this permit. The I-77 Mobility Partners Stormwater Management Program Report is included in Appendix A of this report.

Select Accomplishments for Term V Permit Year 3 (July 1, 2024 – June 30, 2025)

Below are a list of programs required by the permit and a few examples of accomplishments achieved during this permit year:

- **Public Education and Outreach Program** – The permit requires NCDOT to provide educational materials to the traveling public concerning the impacts of stormwater discharges on surface waters and how the public can reduce pollutants in stormwater runoff. In this permit year, NCDOT continued to provide educational materials at Rest Areas/Welcome Centers, Ferry Terminals, and other locations for the traveling public as well as by making anti-litter messaging materials for the public including school-aged children available on NCDOT's website, via social media platforms, and various in-person outreach efforts.
- **Public Involvement and Participation Program** – NCDOT continued to maintain reporting mechanisms for the public to provide input on stormwater issues during project-specific public meetings, or through NCDOT's website for reporting littering, illicit discharges, or illegal dumping observations. NCDOT also continued to provide volunteer opportunities to support its anti-litter campaign with its Adopt-A-Highway program, Swat-A-Litterbug, and the biannual Litter Sweep program.
- **Illicit Discharge Detection and Elimination Program** – NCDOT has established procedures for reporting illicit discharges and illegal dumping activities along NCDOT rights-of-way. In this permit year, NCDOT continued to provide training on identifying and reporting illicit discharges and illegal dumping and reporting them to NCDEQ or other appropriate local government agencies for enforcement.
- **TS4 Mapping Program** – New for the Term V permit, is a requirement to map the components of the Department's drainage system in select areas of the state. The required components to be mapped include pipes, catch basins, open channels, outfalls, and flow direction. Mapping is required in the Phase I municipalities which include: Charlotte, Durham, Fayetteville, Greensboro, Raleigh, and Winston-Salem areas. The project is being implemented in stages and in partnership with the aforementioned municipalities to minimize duplicative data collection. During PY3, NCDOT completed the first stage of the

TS4 Mapping Project with its consultant partners and initiated stage 2, which involves the continued evaluation of the geospatial mapping data obtained from the six Phase I municipalities and refining the geodatabase structure housing the TS4 mapping data. Additionally, using internal forces, NCDOT made significant progress identifying bridges which directly discharge to waterbodies within the six Phase I municipalities. The bridge outfall identification initiative is approximately 80% complete. The TS4 Mapping Project team is beginning to conduct a more detailed desktop review of the geodatabase with the expectation that it will be completed in PY4. There still exist identified data gaps that have the potential to challenge the current Stage 2 work and overall project schedule.

- Construction Site Runoff Control Program – NCDOT continues to operate under its delegated authority granted by the NC Sedimentation Control Committee. NCDOT's Construction Program continues to review and approve erosion & sediment control (ESC) plans, implement, and maintain standard specifications and project special provisions, provide guidance on ESC/stormwater issues, perform inspections and monitoring of construction projects, maintain NCDOT's reclamation process, and provide ESC/stormwater training materials to contractors/ consultants. The following inspections were performed by REU Field Operations staff in calendar year 2024 for each category of land disturbing activity: 3,622 contract construction projects, 110 maintenance projects, 381 bridge maintenance projects, and 27 resurfacing/ shoulder reconstruction projects. During this permit year, NCDEQ initiated its reoccurring annual review of the program with approval of continued program delegation anticipated in PY4.
- Post-Construction Controls
 - BMP Retrofit Program – NCDOT maintains its Retrofit Opportunity Site Selection (ROSS) database of potential stormwater retrofit locations which is integrated within the Department's ArcGIS Online portal. In this permit year, NCDOT performed the following reviews: 31 HUC-12s completely desktop reviewed, 2,179 Retrofit Investigation Areas (RIAs) desktop reviewed, and 357 ROSS sites identified for field review. The total number of Retrofit Opportunity Areas statewide maintained in ROSS is 78,665. In addition, living shoreline BMP retrofits were completed in PY3 and 22 BMP retrofits are currently in development.
 - BMP Toolbox – In this permit year, NCDOT continued work toward finalizing its update to the Department's Stormwater Best Management Practices Toolbox design manual. NCDOT anticipates submitting this update to NCDEQ in the next permit year. Following NCDEQ approval of the updated BMP Toolbox, the manual will be released for use by the Department and its consulting partners for project development and permit compliance. In PY3, NCDOT implemented the new standard policy for preparing and maintaining structural stormwater control measure (SCM) construction drawings and as-built plans on file, in its Construction SharePoint site.

- Post-Construction Stormwater Program – NCDOT continues to implement the stormwater treatment requirements outlined in the Post-Construction Stormwater Program (PCSP) which was updated and approved by NCDEQ in 2022. The PCSP integrates state and federal stormwater requirements into a single document thereby serving as a convenient resource for design teams. In PY3 NCDOT updated its as-built construction policy which now provides examples of details, tables, and plan sheets noting additional required information for documentation on NCDOT's Construction SharePoint site.
- Pollution Prevention and Good Housekeeping Programs
 - Facilities Operation and Maintenance Program – NCDOT continues to implement and maintain site-specific Stormwater Pollution Prevention Plans (SPPPs) at its non-roadway facilities. NCDOT HSP staff conducted 16 internal site reviews, provided online and in-person training to Division staff and contractors, and continued to assist Divisions with SPPP implementation. *[Note: Hurricane Helene damaged several NCDOT facilities in Divisions 11 and 13 which affected facility infrastructure and required SPPP updates].* New for the Term V permit starting in PY3 is the requirement to begin analytical monitoring of stormwater discharges at outfalls from two industrial facilities (North Carolina Global TransPark and the asphalt plant located at the Washington County Creswell Maintenance Yard). Stormwater monitoring was performed at these facilities on a quarterly basis and Discharge Monitoring Results are included in Appendix B of this Annual Report. Note: new for the Term V next year (PY4) is a requirement to begin analytical monitoring of stormwater discharges at outfalls from two more industrial facilities (NCDOT Mann's Harbor State Shipyard and NCDOT Railcar & Locomotive Maintenance Facility in Raleigh).
 - Spill Response Program – The permit requires NCDOT to maintain and implement spill response procedures for its non-roadway facilities. In this permit term, NCDOT continued to implement its spill prevention and response program and to provide annual spill response training at its non-roadway facilities. NCDOT continued to maintain its site-specific Spill Prevention Control and Countermeasure (SPCC) Plans which are integrated into its SPPPs for its maintenance facilities with bulk oil storage.
 - TS4 Operation and Maintenance Program – The permit requires NCDOT to develop and implement a TS4 operations & maintenance (O&M) program designed to reduce the discharge of pollutants including particulates, sediment, litter, and debris from the stormwater conveyance system. In addition to performing inspections and maintenance of the TS4 during normal operations, NCDOT also performed significant litter and debris removal activities (see Litter Management) and road sweeping activities. NCDOT performed roadway sweeping in each Division in PY3, utilizing both NCDOT Forces and contracted entities, which resulted in a total of 20,319 lane miles swept. In PY3, NCDOT HSP staff continued to coordinate with Division staff to review protocols and identify high priority areas within the TS4 O&M program for implementation of BMPs to reduce

pollutants. NCDOT intends to initiate the protocols in phases over the remainder of this permit term in accordance with the schedule outlined in NCDOT's TS4SMP. *[Note: It is important to note that the impact of Hurricane Helene on NCDOT's statewide maintenance programs is significant so it is anticipated that any shift in maintenance toward other high priority areas in the state will likely be delayed until repairs to western NC roads and bridges are completed.]*

- SCM Inspection and Maintenance Program – In this permit year, NCDOT continued to implement its SCM inspection and maintenance program. This includes Roadside Environmental Unit staff coordinating with consultants and Division staff in performing SCM inspections, preparing SCM repair and rehab scopes of work and cost estimate bid packets, conducting post-repair assessments of SCMs recently repaired, and providing training to Division staff. Division Roadside Environmental staff coordinated with contractors and other Division staff to complete the non-routine SCM repairs. Additionally, REU HSP staff initiated SCM calibration inspections for several Divisions in PY3 and anticipates completing the remaining Divisions in PY4. The purpose of the SCM calibration inspections is to help verify the reliability and accuracy of SCM inspections performed by Division staff. *[Note: Hurricane Helene damaged several SCMs located in western NC in NCDOT Divisions 11 and 13. NCDOT HSP staff performed post-hurricane SCM inspections of all SCMs in the impacted counties and are working toward repairing the damaged SCMs].*
- Vegetation Management Program – Central Roadside continued to coordinate and hold vegetation management training sessions for Division staff. Throughout the permit year, Division staff attended various other trainings that offered pesticide recertification credits. Central Roadside also provided the North Carolina Department of Agriculture & Customer Services (NCDA&CS) approved pesticide recertification training, including discussions of pesticide recertification requirements, applications, methods, aquatic subcategory, pesticide handling, and compliance with NPDES pesticide storage facilities.
- Vehicle and Equipment Maintenance Program – NCDOT maintains a well-established vehicle and equipment preventative maintenance (PM) program for its fleet, which includes routine PM inspections and service of the Department's facilities, vehicles, and equipment. Repairs are performed as needed. NCDOT performs the PM inspections and maintenance based on specific frequencies and schedules for each vehicle/equipment to maintain them in good operating condition and to prevent and minimize vehicle/equipment leaks and drips to the ground surface.
- Litter Management Program – NCDOT continues its litter pickup activities including Adopt-A-Highway, Sponsor-A-Highway, Contract Litter Removal, Litter Sweep, and Swat-A-Litterbug programs. The Department documents the efforts of its partners, volunteers, and internal staff on litter collection. The Term V permit requires some new actions such as litter inspections, identification of litter hotspots, and implementation of

BMPs to prevent the discharge of litter at hotspots. These will be a focus area in the remaining years of this permit term. In CY 2024, NCDOT and our partner organizations picked up over 12.6 million pounds of litter. Additionally, I-77 MP collected 234,795 lbs of litter and debris in CY 2024 as noted in Appendix A.

- Fecal Coliform Reduction Program – The permit requires NCDOT to take specific actions at its non-roadway facilities including connecting on-site wastewater systems to publicly owned treatment works where feasible, stormwater pollution prevention training of wastewater facility operators, and maintaining pet waste stations. NCDOT continues to maintain Pet Waste Stations at its Rest Area/Welcome Center (RA/WC) facilities and its Ferry Terminals. NCDOT also continued to operate and maintain its on-site domestic wastewater treatment systems at two Rest Areas (I-77 Surry County RA/WC and I-40 Haywood County RA/WC) in accordance with the manufacturer's and State guidance. *[Note: Hurricane Helene impacted roadway travel in western NC, including I-40 temporarily shut down near Tennessee border from Sept 27, 2024 until March 1, 2025; however, NCDOT's I-40 Haywood County Rest Area remained open for use by NCDOT Forces and contractors during I-40 roadway repairs].* Septic systems located at other NCDOT non-roadway facilities continue to be maintained and evaluated for connections to public systems.
- TMDL Program – The Term V permit provides greater flexibility for how NCDOT complies with EPA-approved total maximum daily loads (TMDLs) but greatly expands the number of TMDL waters NCDOT must respond to by encompassing all TMDLs developed in North Carolina, regardless of whether the TMDL identifies NCDOT as a significant contributor of the pollutant of concern and assigns a unique wasteload allocation to the Department. In PY3, there were no new EPA approved TMDLs anywhere in the state. NCDOT continues to work with NCDEQ and other partners on the development/ redevelopment of nutrient reduction rules, which are considered a TMDL alternative for Jordan Lake, Falls Lake, and High Rock Lake watersheds.
- Research Program – NCDOT continues to manage multiple ongoing stormwater-related research projects. NCDOT completed two stormwater research projects during this permit term: RP 2019-07 *Evaluating and Optimization of Engineered Media Amendments for Contaminant Removal in Stormwater Runoff Filtration Systems*; and RP 2021-01 *Zoysiagrass Expansion on Roadsides - Phase I*. NCDOT Hydraulics Unit and Roadside Environmental Unit staff continue to assist with the coordination of multiple ongoing research projects that support NCDOT's Highway Stormwater Program and its permit requirements. The following are active research projects: RP 2021-02 *Evaluating Maintenance Requirements and Water Quality Benefits of Alternative Vegetated and Non-Vegetated Linings in Roadside Swales*; RP 2024-18 *DeepPipe: Spatially Explicit Deep Learning-based Underground Pipe Prediction for Urban Stormwater Management*; RP 2023-15 *Predicting Resilience and Reducing Failure of SCMs to Extreme Storm Events*; RP 2022-04 *Low-Cost Sensing of Stormwater Outlet Flow*; RP

2025-03 AI-driven, Web-deployed, Low-Cost Visual Sensing of Stormwater Outlet Flow; RP 2018-34 Updates and Maintenance of the Precipitation Alert and Visualization Tool in Support of NCDOT Stormwater Quality Monitoring; RP 2022-03 Optimizing Pesticide Applications along North Carolina Roadsides; RP 2023-13 Management of Mud and Diamond Grinding Slurry during Highway Construction and Maintenance; RP 2024-44 Zoysiagrass Expansion on Roadsides - Phase II; RP 2025-02 Feasibility and Efficiency of Onsite DGS Wastewater Disposal; and RP 2025-04 Evaluating Biological Soil Amendment Strategies for Vegetation Establishment and Stormwater Management in Post-Construction and Roadside Soils.

This page is intentionally left blank.

| | |
|--|-----|
| Certification..... | i |
| Executive Summary..... | iii |
| Acronyms and Abbreviations..... | xi |
| 1.0 Introduction | 1 |
| Purpose | 1 |
| Permit Coverage | 1 |
| Additional Non-NPDES Stormwater Regulations..... | 2 |
| Highway Stormwater Program Organization..... | 2 |
| Shared Compliance Responsibility..... | 3 |
| 2.0 Program Summaries..... | 5 |
| Program Administration BMPs | 5 |
| Public Education and Outreach Program..... | 8 |
| Public Involvement and Participation Program | 11 |
| TS4 Mapping (within the IDDE Program)..... | 13 |
| Illicit Discharge Detection and Elimination (IDDE) Program | 17 |
| Construction Site Runoff Control Program | 21 |
| BMP Retrofit Program..... | 27 |
| BMP Toolbox..... | 29 |
| Post Construction Stormwater Program..... | 29 |
| Facilities Operation and Maintenance Program | 31 |
| Spill Response Program | 36 |
| TS4 Operation and Maintenance Program | 39 |
| SCM Inspection and Maintenance Program | 44 |
| Vegetation, Pesticide and Fertilizer Management | 46 |
| Vehicle and Equipment Maintenance Program..... | 48 |
| Litter Management Program | 50 |
| Fecal Coliform Reduction Program | 54 |
| Total Maximum Daily Load Program | 55 |
| Research Program..... | 59 |
| 3.0 Falls and Jordan Lake GREEN Programs..... | 61 |
| Rule Requirements..... | 61 |
| Program Overview | 61 |
| Accomplishments..... | 62 |
| Considerations for Term V Permit Year 4 | 64 |

Appendix

| | |
|------------|---|
| Appendix A | I-77 Mobility Partners Stormwater Management Program Report |
| Appendix B | DMRs for NCDOT Industrial Facilities |

This page is intentionally left blank.

| | |
|--------------|--|
| AAH | Adopt-A-Highway |
| ADT | Average Daily Traffic |
| AGOL | ArcGIS Online |
| ATLAS | Advancing Transportation through Linkages Automation and Screening |
| DMR | Discharge Monitoring Report |
| BMP | Best Management Practice |
| EAU | Environmental Analysis Unit |
| EMC | Environmental Management Commission |
| EPA | Environmental Protection Agency |
| ERCON | Erosion Control REU Field Operations Database Application |
| ESC | Erosion and Sediment Control |
| ESM | Environmental Sensitivity Map |
| GH&PP | Good Housekeeping & Pollution Prevention |
| GIS | Geospatial Information System |
| Go!NC | NCDOT's Web Mapping Portal |
| GREEN | Guided Reduction of Excess Environmental Nutrients |
| HSP | Highway Stormwater Program |
| HU | Hydraulics Unit |
| HUC | Hydraulic Unit Code |
| I&M | Inspection and Maintenance |
| IDDEP | Illicit Discharge Detection and Elimination Program |
| IRMA | Industrial Roadway Maintenance Activities |
| JLOW | Jordan Lake One Water |
| LID | Low Impact Development |
| LM | Litter Management |
| LMS | Learning Management System |
| LOS | Level of Service |
| MEP | Maximum Extent Practicable |
| MS4 | Municipal Separate Storm Sewer System |
| NA | Not Applicable |
| NBSS | Nature-based Stormwater Solutions |
| NC | North Carolina |
| NCAC | North Carolina Administration Code |
| NCDA&CS | North Carolina Department of Agriculture & Customer Services |
| NCDEQ | North Carolina Department of Environmental Quality |
| NCDOT | North Carolina Department of Transportation |
| NCDOT-JLSLAT | NCDOT Jordan Lake Stormwater Nutrient Loading Accounting Tool |
| NCDWR | North Carolina Department of Water Resources |
| NCGTP | North Carolina Global TransPark |
| NCSU | North Carolina State University |
| NCTA | North Carolina Turnpike Authority |

| | |
|--------|---|
| NPDES | National Pollutant Discharge Elimination System |
| O&M | Operations and Maintenance |
| PCSP | Post Construction Stormwater Program |
| PM | Preventative Maintenance |
| POTW | Publicly Owned Treatment Works |
| PY | Permit Year |
| R&D | Research & Development |
| REU | Roadside Environmental Unit |
| RIA | Retrofit Investigation Area |
| ROSS | Retrofit Opportunity Site Selection |
| ROW | Right of Way |
| RP | Research Project |
| SAH | Sponsor-A-Highway |
| SAP | Systems Applications and Products |
| SCM | Stormwater Control Measure |
| SCMS | Stormwater Control Management System |
| SOP | Standard Operating Procedure |
| SP | SharePoint |
| SPCA | Sedimentation Pollution Control Act |
| SPCC | Spill Prevention Control and Countermeasure |
| SPPP | Stormwater Pollution Prevention Plan |
| SPR | Spill Prevention and Response |
| STIP | State Transportation Improvement Projects |
| TMDL | Total Maximum Daily Load |
| TS4 | Transportation Separate Storm Sewer System |
| TS4SMP | Transportation Separate Storm Sewer System Stormwater Management Plan |
| UNRBA | Upper Neuse River Basin Association |
| USEPA | United States Environmental Protection Agency |
| VM | Vegetation Management |
| WLA | Waste Load Allocation |

1.0 Introduction

Purpose

This Annual Report was prepared and submitted to be compliant with North Carolina Department of Transportation's (NCDOT's) statewide National Pollutant Discharge Elimination System (NPDES) stormwater discharge permit (NCS000250) requirement under Part 4.2 of the permit issued May 1, 2022 (Term V permit). This Annual Report includes an assessment of the various achievements and compliance activities performed under the permit for the fiscal year (July 1, 2024 – June 30, 2025). This period is also referred to herein as Term V Permit Year 3 (or PY3).

The Report follows the format that mimics the general guidance provided by North Carolina Department of the Environment Quality (NCDEQ) and includes appropriate information to accurately describe the progress, status, and results of the Department's permitted programs. This Annual Report includes specific annual reporting metrics identified in NCDOT's Transportation Separate Storm Sewer System - Stormwater Management Plan (TS4SMP) update, which was approved by NCDEQ on December 18, 2023. TS4SMP resubmittals for NCDEQ approval are not required because NCDOT has only made minor edits to the TS4SMP following PY2 and PY3, which is noted to NCDEQ during the Annual Report submittals. This Annual Report assesses the Department's compliance with our permit, provides information on the establishment of appropriate legal authorities, inspections, and enforcement actions where applicable, and includes specific annual reporting metrics identified in NCDOT's TS4SMP for each permitted program area. The TS4SMP effectively serves as NCDOT's five-year business plan outlining the major activities to be performed to comply with the permit along with annual reporting metrics. It is the intent of NCDEQ that the reporting metrics contained in this Annual Report serve as the basis of future annual reports. Hence, this Annual Report contains a brief introduction (Section 1) which is then followed by the detailed TS4SMP tabular summary (Section 2) of the Department's Highway Stormwater Program (HSP) best management practices (BMPs), measurable goals, schedule for implementation, and reporting metrics for this permit year, as well as anticipated/ planned program activities for remaining years of this permit term. NCDOT's self-assessment for PY3 indicated that the Department was in compliance with the requirements of the TS4SMP.

Permit Coverage

The HSP was established in 1998 to manage NCDOT's compliance with its NPDES stormwater permit. Under this NPDES permit NCDOT is authorized to discharge stormwater from NCDOT's transportation separate storm sewer system (TS4) to surface waters statewide. The Term V NPDES permit, effective through April 30, 2027, specifically authorizes NCDOT to discharge stormwater runoff from the following activities:

- General roadway including weigh stations and tolling facilities
- General railway
- Construction activities disturbing one acre or more
- Borrow pits/waste piles including mines
- Non-roadway facilities with the following TS4 operations:

- Road and bridge maintenance
- Vehicle and equipment maintenance
- Pesticide and fertilizer storage
- Salt and deicing chemical storage
- Traffic services
- Material storage areas
- Ferry terminals and maintenance areas
- Rail maintenance
- Rest areas
- Administrative buildings
- Non-roadway industrial activities, including:
 - NC Global TransPark (airport activities)
 - Asphalt plants owned and operated by NCDOT
 - NCDOT Mann's Harbor State Shipyard (boat repair activities)
 - NCDOT Railcar & Locomotive Maintenance Facilities (railcar repair activities)

This permit also covers the following sub-organizations:

- All similar activities of the North Carolina Turnpike Authority (NCTA), for all NCTA projects across the state.
- All similar activities of the I-77 Mobility Partners, for the I-77 corridor.

This permit does not cover the activities of the NC Ports Authority which holds separate NPDES stormwater permits.

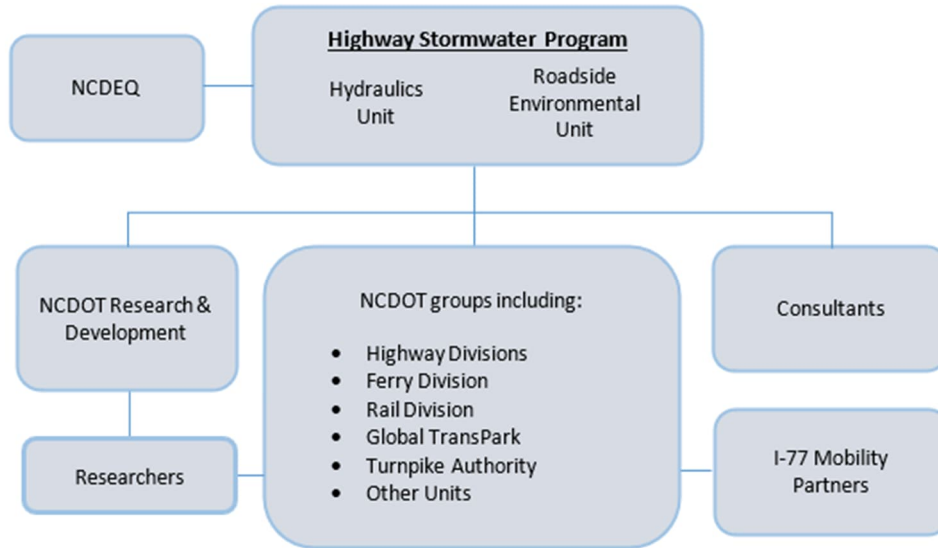
NCDOT's TS4 is distributed across the entire state of North Carolina (NC) including within all 17 major NC River Basins. The NCDOT TS4 is interconnected with other regulated municipal separate storm sewer systems (MS4s) and directly receives and discharges stormwater from and to these systems.

Additional Non-NPDES Stormwater Regulations

The HSP also manages NCDOT's implementation of the stormwater requirements in the Jordan and Falls Reservoir watersheds in compliance with state nutrient load reduction rules for state and federal entities. Annual reporting requirements for these two watersheds can be found in Section 3 of this report and is allowed by 15A North Carolina Administration Code (NCAC) 02B .0271 (8)(c) and 15A NCAC 02B .0281 (11)(d).

Highway Stormwater Program Organization

To implement its NPDES permit, NCDOT has organized the HSP into specific program areas to follow United States Environmental Protection Agency (USEPA) and NCDEQ guidance and to effectively address the permit. NCDOT's HSP is collaboratively managed by NCDOT's Hydraulics Unit (HU) and Roadside Environmental Unit (REU) with support from others including NCDOT's consultant partners, Division personnel, and Research & Development staff and researchers (see HSP Organization below).



Shared Compliance Responsibility

NCDOT will share the responsibility to implement its permit requirements with I-77 Mobility Partners for the specified areas of NCDOT's TS4, which are at least as stringent as the corresponding NPDES TS4 Permit requirement. NCDOT remains responsible for compliance if the other entity fails to perform the permit obligation and may be subject to enforcement action if neither NCDOT nor the other entity fully performs the permit obligation. I-77 MP is responsible for implementing specific BMPs or permit requirements. A legal agreement to share responsibility is in place.

There are no other entities applying for co-permittee status under the NPDES TS4 permit number NCS000250 for NCDOT.

This page is intentionally left blank.

2.0 Program Summaries

This section summarizes NCDOT's TS4SMP Program Area BMPs, measurable goals, scheduled for implementation, annual reporting metrics, and related reporting comments. References below to specific permit years (PY) 1-5 are for Term V. For PY3, NCDOT's self-assessment indicated that the Department was in compliance with the requirements of the TS4SMP. BMPs for PY 4-5 are included herein; however, their Annual Reporting Metric Outputs and Reporting Comments are listed as "not applicable" for this 2025 Annual Report. Completed BMPs for PY1 and PY2 are documented in the respective 2023 and 2024 Annual Reports.

| Program Area BMPs, Measurable Goals, Schedule for Implementation, and Annual Reporting Metrics | | | | | | | |
|--|--|--|---|---|-------------|--------------------------------|---|
| BMP No. | Permit Reference and Description of BMP | Measurable Goal(s) | Schedule for Implementation | Annual Reporting Metric | Permit Year | Annual Reporting Metric Output | Reporting Comment |
| Program Administration BMPs | | | | | | | |
| 1 | Program Administration BMPs | | | | | | |
| 1 | 1.4 Pay the annual administering and compliance monitoring fee. | 1. Pay within 30 (thirty) days of being billed. | 1. Annually, Permit Years 1-5 | 1. Yes/No | 3 | Yes | NPDES Annual permit fee of \$4,200 (invoice number 2025PR004276, invoice date 5/2/25) for the period 2025-06-01 to 2026-05-31 was paid and received on 5/7/2025. SAP document number of 1908549139. |
| 2 | Permit Renewal Application | | | | | | |
| 2 | Certify and submit a permit renewal application package. | 1. Certify the stormwater permit renewal application and submit to NCDEQ at least 180 days prior to permit expiration. | 1. Permit Year 5 | 1. Date of permit renewal application submittal | 4 - 5 | NA | Not applicable until Permit Year 4/5. Actual date application is due to DEMLR is November 1, 2026. (Permit expires April 30, 2027) |
| 3 | See approval of the TS4SMP and maintain a copy online | | | | | | |
| 3 | 3.1.4 Submit the TS4SMP to DEMLR within ninety (90) days of permit issuance for DEMLR review and approval. The TS4SMP is deemed approved if no response is received from the DEMLR within 90 days of receipt by the DEMLR. | 1. Submit the TS4SMP to DEMLR within ninety (90) days of permit issuance. | 1. Within ninety (90) days of permit issuance | 1. Yes/No | 4 | NA | Not applicable until Permit Year 4. |

| Program Area BMPs, Measurable Goals, Schedule for Implementation, and Annual Reporting Metrics | | | | | | | |
|--|---|--|-----------------------------------|---|-------------|--------------------------------|--|
| BMP No. | Permit Reference and Description of BMP | Measurable Goal(s) | Schedule for Implementation | Annual Reporting Metric | Permit Year | Annual Reporting Metric Output | Reporting Comment |
| 3 | 2.1.4 Notify DEMLR in writing of any planned major modifications to the TS4SMP. DEMLR will inform the Permittee within 30 days if approval of the modified TS4SMP is required. | 2. If major modifications are needed, notify DEMLR in writing. | 2. If needed | 2. Needed and submitted/ Needed but not submitted/ Not needed | 3 | Not needed | NCDOT's TS4SMP was updated with minor changes only. A summary of the minor changes was provided with Annual Report submittal to NCDEQ. |
| 3 | 2.4.1 When specific changes to the program or TS4SMP are required by DEMLR in writing, the Permittee shall provide certification in writing to DEMLR that the changes have been made. | 3. Certify that changes required in writing by DEMLR have been made. | 3. If needed | 3. Needed and submitted/ Needed but not submitted/ Not needed | 3 | Not needed | NCDOT determined that the Secretary did not need to re-sign the TS4SMP because the minor edits did not result in any operational changes to NCDOT's compliance activities. |
| 3 | 2.4.2 When specific changes to the program or TS4SMP are required by DEMLR, the Permittee shall submit a plan and time schedule to DEMLR for modifying the TS4SMP to meet the requirements within 90 days. | 4. Modify the TS4SMP and submit within 90 days if changes are required by DEMLR. | 4. If needed | 4. Needed and submitted/ Needed but not submitted/ Not needed | 3 | Not needed | DEMLR did not request any changes to the updated TS4SMP. |
| 3 | 2.1.6 Maintain an up-to-date version of the permit and the TS4SMP online in a manner that is accessible by DEMLR and the public. | 5. Maintain an up-to-date version of the permit and TS4SMP on NCDOT's public facing website. | 5. Continuously Permit Years 1–5 | NA | 3 | Yes | The TS4SMP update was submitted to DEMLR in November 2023 and approved on December 18, 2023. NCDOT has only made minor changes to its TS4SMP in PY2 and PY3; therefore, TS4SMP updates were not required to be submitted to NCDEQ. An up-to-date version of the permit and TS4SMP are maintained on NCDOT's Connect website here: https://connect.ncdot.gov/resources/hydro/Pages/HSPPrograms.aspx |
| 5 | Permit Reference and Description of BMP | | | | | | |
| 5 | 3.1.2 Maintain a list of positions responsible for implementing the permit and TS4SMP. The list shall include specific positions and a brief description of stormwater responsibilities and/or duties for each listed position. | 1. Maintain a list of roles and responsibilities for staff responsible for implementing the TS4SMP and permit. | 1. Continuously, Permit Years 2-5 | 1. Yes/No | 3 | Yes | NCDOT made minor edits to the TS4SMP in PY3, which were provided to NCDEQ; however, no updates were made to NCDOT's roles and responsibilities for TS4SMP and permit implementation. |

| Program Area BMPs, Measurable Goals, Schedule for Implementation, and Annual Reporting Metrics | | | | | | | |
|--|---|---|--|--|-------------|--------------------------------|---|
| BMP No. | Permit Reference and Description of BMP | Measurable Goal(s) | Schedule for Implementation | Annual Reporting Metric | Permit Year | Annual Reporting Metric Output | Reporting Comment |
| 6 | Maintain written procedures | | | | | | |
| 6 | 2.2.2 The Permittee shall maintain, and make available to the Division upon request, written procedures for implementing the MCMs, permit requirements, and TS4SMP. Written procedures shall identify specific action steps, schedules, resources, and responsibilities for implementing the MCMs. Written procedures can be free-standing or, where appropriate, integrated into the TS4SMP. | 1. Maintain written procedures for implementing the MCMs, permit requirements, and TS4SMP. Make available upon request. | 1. Per schedules established in the TS4SMP | 1. Yes/No | 3 | Yes | NCDOT maintains written procedures for implementing MCMs, permit requirements and TS4SMP on various platforms including, but not limited to, its guidance manuals, policies, and procedures located on NCDOT's Connect site, NCDOT.gov site, its HSP SharePoint site, and other internal areas. |
| 7 | Annual TS4SMP Review and Annual Report | | | | | | |
| 7 | 4.1 Perform an annual review and update of the TS4SMP. | 1. Review the TS4SMP to identify compliance issues, necessary modifications, and improvements needed to maximize TS4SMP effectiveness | 1. Annually Permit Years 1-5 | 1. Yes/No | 3 | Yes | Responsible, accountable, and verifier staff have reviewed the TS4SMP and compliance with the requirements as part of implementation of NCDOT's Compliance Task Tracker process. |
| 7 | 4.1 Perform an annual review and update of the TS4SMP. | 2. Update the TS4SMP as needed to address deficiencies | 2. Annually Permit Years 1-5 | 2. Needed and updated/ Needed, not updated/ Not needed | 3 | Not needed | NCDOT made minor edits to the TS4SMP and noted these to NCDEQ when submitting the Annual Report. |
| 7 | 2.1.1 Maintain adequate funding and staffing to implement and manage the provisions of the TS4SMP and meet the requirements of this permit. | 3. Assess if the program is adequately funded and staffed. | 3. Annually Permit Years 1-5 | 3. Yes/No | 3 | Yes | NCDOT requires all project managers to manage and monitor monthly project/program budgets through the NC Enterprise Business Services Cost Planning Application for each active WBS element. The HSP Manager enters into the application a monthly budget for the NPDES program at the start of each fiscal year consistent with the yearly allocation in the STIP. This budget is monitored monthly in SAP and adjustments are made to the Cost Planning Application, as necessary. For PY3 the NPDES budget was found to be adequate. |

| Program Area BMPs, Measurable Goals, Schedule for Implementation, and Annual Reporting Metrics | | | | | | | |
|--|--|---|-----------------------------------|--|-------------|--------------------------------------|---|
| BMP No. | Permit Reference and Description of BMP | Measurable Goal(s) | Schedule for Implementation | Annual Reporting Metric | Permit Year | Annual Reporting Metric Output | Reporting Comment |
| 7 | 2.1.1 Maintain adequate funding and staffing to implement and manage the provisions of the TS4SMP and meet the requirements of this permit. | 4. Request additional funding if needed | 4. If needed | 4. Needed and requested/ Needed, not requested/ Not needed | 3 | Not needed | Funding levels were verified on 6/25/2025 and were found to be adequate. No funding request is needed at this time. |
| 7 | 4.2 The Permittee shall submit an annual report to DEMLR by August 31 of each year. When required, a permit renewal application may be submitted in lieu of the annual report. | 5. Prepare, certify, and submit the annual report to DEMLR prior to August 31 each year. In year 5, a permit renewal application may be submitted in lieu of the annual report. | 5. Annually Permit Years 1-4 | 5. Yes/No | 3 | Yes | NCDOT has prepared, certified, and submitted the Annual Report for Term V PY3 to DEMLR prior to August 31, 2025. |
| Public Education and Outreach Program | | | | | | | |
| 8 | Evaluate and Identify Target Pollutants, Likely Sources, and Associated Target Audiences | | | | | | |
| 8 | 3.2.1 Evaluate the target pollutants, likely sources, and associated target audiences likely to have significant stormwater impacts to the TS4 and receiving waters. | 1. Evaluate identified targets to assess continued applicability. | 1. Annually, Permit Years 1-5 | 1. Yes/No | 3 | Yes | NCDOT has evaluated the identified targets, and they continue to be applicable. Target pollutants and sources are outlined in the TS4SMP (Section 3.7). |
| 8 | 3.2.1 Evaluate the target pollutants, likely sources, and associated target audiences likely to have significant stormwater impacts to the TS4 and receiving waters. | 2. Update identified targets if needed. | 2. Annually, Permit Years 1-5 | 2. Updated/ Not Needed | 3 | Not needed | Identified targets, sources, and audiences were evaluated, and were found to be adequate; therefore, no updates are needed. |
| 9 | Public Education Materials on Litter to School-Aged Children | | | | | | |
| 9 | 3.2.1 and 3.2.2 Provide educational materials that target school-aged children. | 1. Make anti-litter packages available to teachers upon request. | 1. Continuously, Permit Years 1-5 | 1. Number provided/ None were requested | 3 | 719 teacher kits provided in CY 2024 | NCDOT continues to provide anti-litter packages available to teachers upon request. In CY 2024, NCDOT sent out for school-aged children/ teachers a total of 719 individual teacher kits. |

| Program Area BMPs, Measurable Goals, Schedule for Implementation, and Annual Reporting Metrics | | | | | | | |
|--|--|--|-----------------------------------|---|-------------|---|---|
| BMP No. | Permit Reference and Description of BMP | Measurable Goal(s) | Schedule for Implementation | Annual Reporting Metric | Permit Year | Annual Reporting Metric Output | Reporting Comment |
| 9 | 3.2.1 and 3.2.2 Provide educational materials that target school-aged children. | 2. Make anti-litter materials targeting school-aged children available on NCDOT's website. | 2. Continuously, Permit Years 1-5 | 2. Number of unique materials | 3 | 43 unique materials | NCDOT maintains anti-litter materials targeting school-aged children on its website. This includes 43 unique anti-litter materials on its website. |
| 10 | Provide Educational Materials on Litter to Traveling Public | | | | | | |
| 10 | 3.2.1 and 3.2.2 Provide educational materials regarding litter to users of NCDOT transportation systems. | 1. Make hardcopies of anti-litter brochures available to the public. | 1. Annually, Permit Years 1-5 | 1. Number of hardcopy brochures printed/ Additional copies not needed | 3 | 7,000 AAH brochures printed, 15,000 SWAT report cards printed, 5,000 K-2 Activity mats printed, and 5,000 3-5 Activity mats printed | NCDOT makes hardcopies of anti-litter materials available to the public. In CY 2024, NCDOT LM printed 7,000 AAH brochures, 15,000 SWAT report cards, 5,000 K-2 Activity mats, and 5,000 3-5 Activity mats, which are then made available to the public. |
| 10 | 3.2.1 and 3.2.2 Provide educational materials regarding litter to users of NCDOT transportation systems. | 2. Make anti-litter messaging materials for the public available on NCDOT's website. | 2. Continuously, Permit Years 1-5 | 2. Number of unique materials | 3 | 61 unique materials | NCDOT maintains anti-litter messaging for the public available on its website. This includes 43 unique anti-litter materials and 18 unique stormwater pollution prevention materials (litter is a stormwater pollutant) on its website. Additionally, NCDOT's home page provides regular NCDOT Now videos with anti-litter messaging (e.g., Litter Sweep, Secure Your Load). |
| 11 | Provide general stormwater quality educational materials to Traveling Public | | | | | | |
| 11 | 3.2.1 and 3.2.2 Provide general stormwater quality educational materials to users of NCDOT transportation systems. | 1. Make stormwater quality educational materials available that discuss the pollutants of concern listed in Table 3.5. | 1. Continuously, Permit Years 1-5 | 1. Number of unique materials | 3 | 286 unique materials | NCDOT maintains stormwater quality educational materials that discuss the pollutants of concern (listed in TS4SMP Table 3.5) on its website which is available to the public. This includes 18 unique stormwater education materials (e.g., activity sheets, information flyer and presentation materials, educator lesson plans, and posters). In addition to its "Environmental" and "Educator Resources" subsites and anti-litter subsites which contain 43 unique anti-litter materials, NCDOT Hydraulics Unit maintains 30 unique Highway Stormwater Program materials on NCDOT Connect, and NCDOT Roadside Environmental Unit maintains 195 unique items for Construction, Erosion & Sediment Control, and Vegetation Management on NCDOT Connect, for a total of 286 unique items. |

| Program Area BMPs, Measurable Goals, Schedule for Implementation, and Annual Reporting Metrics | | | | | | | |
|--|---|---|-----------------------------------|-------------------------|-------------|--------------------------------|---|
| BMP No. | Permit Reference and Description of BMP | Measurable Goal(s) | Schedule for Implementation | Annual Reporting Metric | Permit Year | Annual Reporting Metric Output | Reporting Comment |
| 11 | 3.2.1 and 3.2.2 Provide general stormwater quality educational materials to users of NCDOT transportation systems. | 2. Develop additional or update existing educational materials to address metals, organics, and temperature. | 2. Permit Year 3 | 2. Yes/No | 3 | Yes | In PY3, NCDOT HSP staff evaluated available NCDOT public education materials, including those related to pollutants: metals, organics, and temperature. NCDOT then performed a detailed review of available public education materials from other entities including other State DOTs, MS4s, NCDEQ, and USEPA. NCDOT HSP staff determined additional materials were needed. In PY3, NCDOT initiated the development of new materials to supplement its existing materials, including new educational poster and brochure content. The new educational materials focus on addressing metals, organics, and temperature as stormwater pollutants. |
| 12 | Maintain Public Education and Outreach materials online | | | | | | |
| 12 | 3.2.3 Maintain educational materials online. | 1. Maintain educational materials regarding stormwater, water quality, TS4 pollutants, and NCDOT stormwater projects and activities online. | 1. Continuously, Permit Years 1-5 | 1. Yes/No | 3 | Yes | NCDOT maintains educational materials related to stormwater, water quality, TS4 pollutants, and NCDOT stormwater projects and activities on its website. |
| 13 | Maintain and promote reporting mechanisms for the traveling public to identify and report littering, illicit discharges, illegal dumping | | | | | | |
| 13 | 3.2.4 and 3.4.10 Maintain and promote reporting mechanisms for the public to identify and report littering, illicit discharge, and illegal dumping. | 1. Maintain reporting mechanisms through NCDOT's Contact Us Citizen Action Request (CARs) website. | 1. Continuously, Permit Years 1-5 | 1. Yes/No | 3 | Yes | NCDOT maintains its reporting mechanisms via Contact Us - Citizen Action Request website (https://www.ncdot.gov/contact/Pages/default.aspx). |
| 13 | 3.2.4 and 3.4.10 Maintain and promote reporting mechanisms for the public to identify and report littering, illicit discharge, and illegal dumping. | 2. Maintain reporting mechanisms via telephone by maintaining contact information on NCDOT's website. | 2. Continuously, Permit Years 1-5 | 2. Yes/No | 3 | Yes | NCDOT maintains its reporting mechanisms via telephone by maintaining contact information on NCDOT's website https://www.ncdot.gov/contact/Pages/default.aspx , and https://apps.ncdot.gov/dot/directory/authenticated/UnitPage.aspx . |
| 13 | 3.2.4 and 3.4.10 Maintain and promote reporting mechanisms for the public to identify and report littering, illicit discharge, and illegal dumping. | 3. Maintain reporting mechanisms via telephone through printed materials. | 3. Continuously, Permit Years 1-5 | 3. Yes/No | 3 | Yes | NCDOT maintains its reporting mechanisms via telephone through printed materials. |

| Program Area BMPs, Measurable Goals, Schedule for Implementation, and Annual Reporting Metrics | | | | | | | |
|--|---|--|-----------------------------------|---|-------------|---|--|
| BMP No. | Permit Reference and Description of BMP | Measurable Goal(s) | Schedule for Implementation | Annual Reporting Metric | Permit Year | Annual Reporting Metric Output | Reporting Comment |
| 13 | 3.2.4 and 3.4.10 Maintain and promote reporting mechanisms for the public to identify and report littering, illicit discharge, and illegal dumping. | 4. Promote multiple reporting mechanisms. | 4. Continuously, Permit Years 1-5 | 4. Yes/No | 3 | Yes | NCDOT continues to promote multiple reporting mechanisms for the public to identify and report littering, illicit discharges, and illegal dumping. |
| Public Involvement and Participation Program | | | | | | | |
| 14 | Mechanisms for public input on stormwater issues and stormwater program | | | | | | |
| 14 | 3.3.1 Provide mechanisms for public input on stormwater issues and the stormwater program. | 1. Provide opportunities to comment on stormwater during project-specific public meetings. | 1. Continuously, Permit Years 1-5 | 1. Number of public meetings held | 3 | 68 Public Meetings/Hearings (including Small Group Meetings) held | NCDOT has provided opportunities to comment on stormwater during 42 project-specific public meetings/ public hearings including Small Group Meetings. |
| 14 | 3.3.1 Provide mechanisms for public input on stormwater issues and the stormwater program. | 2. Maintain NCDOT's Contact Us Citizen Action Request (CARs) website. | 2. Continuously, Permit Years 1-5 | 2. Yes/No | 3 | Yes | NCDOT continues to maintain Contact Us - Citizen Action Request website (https://www.ncdot.gov/contact/Pages/default.aspx). |
| 14 | 3.3.1 Provide mechanisms for public input on stormwater issues and the stormwater program. | 3. Maintain contact information on NCDOT's website. | 3. Continuously, Permit Years 1-5 | 3. Yes/No | 3 | Yes | NCDOT continues to maintain contact information on NCDOT's website (https://www.ncdot.gov/contact/Pages/default.aspx). |
| 14 | 3.3.1 Provide mechanisms for public input on stormwater issues and the stormwater program. | 4. Publish the monthly CARs report on NCDOT's website. | 4. Continuously, Permit Years 1-5 | 4. Yes/No | 3 | Yes | NCDOT continues to publish the monthly CARs reports on NCDOT's website: https://www.ncdot.gov/about-us/our-mission/Performance/Pages/citizen-action-request-report.aspx |
| 15 | Accept interns to participate in NCDOT's Highway Stormwater Program | | | | | | |
| 15 | Accept interns to participate in NCDOT's Highway Stormwater Program. | 1. Accept interns as feasible to participate in NCDOT's Highway Stormwater Program. | 1. Annually, Permit Years 1-5 | 1. Number of interns/ Reason not feasible | 3 | In CY 2024, HU had 2 College interns and 2 high school interns and REU had 3 interns for a total of 7 interns. Additionally, HU had 9 TEAs and REU had 2 TEAs for a total of 11 TEAs. | NCDOT continues to maintain a College Programs & Internship program. The program specifies eligibility requirements and the application process which is through the North Carolina State Government employment website. A total of 7 interns and 11 Transportation Engineering Associates (TEAs) had involvement with the Highway Stormwater Program between the Hydraulics and Roadside Environmental units. The number of interns included those employed during CY 2024. |

| Program Area BMPs, Measurable Goals, Schedule for Implementation, and Annual Reporting Metrics | | | | | | | |
|--|---|---|-----------------------------------|--|-------------|--|---|
| BMP No. | Permit Reference and Description of BMP | Measurable Goal(s) | Schedule for Implementation | Annual Reporting Metric | Permit Year | Annual Reporting Metric Output | Reporting Comment |
| 16 | Continue Adopt-A-Highway Program | | | | | | |
| 16 | 3.3.2 Manage the ongoing Adopt-A-Highway Program. | 1. Encourage public participation in the Adopt-A-Highway (AAH) Program. | 1. Continuously, Permit Years 1-5 | 1. Number of groups participating in the program | 3 | 4,900 AAH volunteer groups | NCDOT continues to encourage public participation in its AAH Program through use of its website, public meetings and public outreach efforts, public service announcements, anti-litter campaigns, and various social media platforms. NCDOT's AAH Program has more than 120,000 participants across the state — civic and community groups, including schools, religious, professional and social organizations, as well as individuals and families. |
| 16 | 3.3.2 Manage the ongoing Adopt-A-Highway Program. | 2. Dispose of litter collected through the AAH Program. | 2. Continuously, Permit Years 1-5 | 2. Quantity of litter collected | 3 | 1,053,495 pounds of litter collected by AAH volunteers | NCDOT continues to maintain its AAH Program. NCDOT LM tracks AAH litter collections through use of its LM website. AAH volunteers submit their litter collections and disposal by submitting a Pickup Report for AAH using NCDOT's online reporting mechanism, which is found at: https://apps.ncdot.gov/LM/Home/Navigation?program=AAHV volunteers. |
| 16 | 3.3.2 Manage the ongoing Adopt-A-Highway Program. | 3. Continue to recognize long term AAH volunteer groups. | 3. Continuously, Permit Years 1-5 | 3. Number of recognitions made | 3 | 348 recognitions to AAH volunteer groups made | NCDOT continues to recognize AAH volunteer groups for their litter collection efforts. In CY 2024, NCDOT LM gave out 338 AAH awards for reaching milestones of 10, 15, 20, 25, 30 and 35 years. Additionally, NCDOT LM coordinates internally with Communications Office to recognize groups or individuals involved in litter collection. Typically, if NCDOT sees that one of our AAH group has posted about their pickup, then the Department shares that or if photos have been shared with us via email, NCDOT drafts up a note to post on our own. Most AAH groups only have a Facebook page. In CY 2024, NCDOT shared/ made 10 posts highlighting different group efforts. Several of those posts were also shared on other platforms (e.g., Twitter, Instagram). In total, NCDOT made 348 recognitions to AAH volunteer groups. |

| Program Area BMPs, Measurable Goals, Schedule for Implementation, and Annual Reporting Metrics | | | | | | | |
|--|--|---|-----------------------------------|---|-------------|--|--|
| BMP No. | Permit Reference and Description of BMP | Measurable Goal(s) | Schedule for Implementation | Annual Reporting Metric | Permit Year | Annual Reporting Metric Output | Reporting Comment |
| 16 | 3.3.2 Manage the ongoing Adopt-A-Highway Program. | 4. Maintain list of Litter Management Coordinators. | 4. Continuously, Permit Years 1-5 | 4. Yes/No | 3 | Yes | NCDOT LM maintains a list of LM Coordinators. These local coordinators are responsible for managing anti-litter programs, such as AAH and Litter Sweep, in their assigned counties. LM Coordinators work directly with volunteers to select an available stretch of state-maintained highway and help answer questions about NCDOT's anti-litter programs. |
| 17 | Continue the Statewide Litter Sweep Program | | | | | | |
| 17 | 3.3.2 Continue the Statewide Litter Sweep Program. | 1. Continue public participation in litter pickup, including the biannual Litter Sweep Program. | 1. Continuously, Permit Years 1-5 | 1. Report the number of volunteers | 3 | 58,692 volunteers | NCDOT continues public participation in litter pickup, including the biannual Litter Sweep Program. In CY 2024, NCDOT had 58,692 volunteers (including 55,904 AAH volunteers and 2,788 Other Volunteers) participate in its Litter Sweep Program. |
| 17 | 3.3.2 Continue the Statewide Litter Sweep Program. | 2. Track the quantity of litter collected by volunteers. | 2. Continuously, Permit Years 1-5 | 2. Document the quantity of litter collected | 3 | 178,875 pounds of litter collected by AAH and Other Volunteers during Litter Sweep | The litter collected by AAH and Other Volunteers during Litter Sweep periods include 70,410 lbs (fall) + 108,465 lbs (spring) = 178,875 lbs (total). Note: these totals are for AAH and Other Volunteers only; NCDOT normally includes ALL programs in the yearly Interagency Litter Report. |
| 18 | Continue the Statewide Swat-A-Litterbug Program | | | | | | |
| 18 | Continue the Statewide Swat-A-Litterbug Program | 1. Encourage the public to report littering through the Swat-A-Litterbug Program. | 1. Continuously, Permit Years 1-5 | 1. Number of Swat-A-Litterbug reports submitted | 3 | 4,898 reports submitted | NCDOT continues to encourage the public to report littering through its Swat-A-Litterbug program. NCDOT LM maintains the Swat-A-Litterbug program which includes receiving reports and mailing letters to reported litterers. NCDOT LM system tracks the # reports, but not specific personal information. In CY 2024, NCDOT mailed 4,898 Swat-A-Litterbug letters out to individuals that were reported as littering. |
| TS4 Mapping (within the IDDE Program) | | | | | | | |
| 19 | Maintain a GIS-based implicit stormwater outfall inventory | | | | | | |
| 19 | 3.4.1 Maintain a GIS-based implicit stormwater outfall inventory which includes implicit outfalls from primary and secondary roadways. | 1. Maintain a process for deriving a GIS-based implicit stormwater outfall inventory. | 1. Continuously, Permit Years 1-5 | 1. Yes/No | 3 | Yes | NCDOT maintains a process for deriving its GIS-based implicit stormwater outfall inventory. The implicit inventory is maintained in ESM which can be accessed via NCDOT's Connect site. |

| Program Area BMPs, Measurable Goals, Schedule for Implementation, and Annual Reporting Metrics | | | | | | | |
|--|--|--|-----------------------------------|-------------------------|-------------|--------------------------------|---|
| BMP No. | Permit Reference and Description of BMP | Measurable Goal(s) | Schedule for Implementation | Annual Reporting Metric | Permit Year | Annual Reporting Metric Output | Reporting Comment |
| 19 | 3.4.1 Maintain a GIS-based implicit stormwater outfall inventory which includes implicit outfalls from primary and secondary roadways. | 2. Implement the protocol to update the GIS-based implicit stormwater outfall inventory. | 2. Annually, Permit Years 1-5 | 2. Yes/No | 3 | Yes | NCDOT implemented the protocol and updated the implicit stormwater outfall inventory in PY3. |
| 20 | Maintain a Statewide Base Map of the TS4 | | | | | | |
| 20 | 3.4.2 Develop and maintain a statewide base map of Permittee owned and operated primary routes, secondary roads, surface waters, and bridge and roadway crossings of surface waters. | 2. Maintain a process for deriving a GIS-based statewide base map of Permittee owned and operated primary routes, secondary roads, surface waters, and bridge and roadway crossings of surface waters. | 2. Continuously, Permit Years 2-5 | 2. Yes/No | 3 | Yes | NCDIT Transportation GIS Group maintains GIS standards and practices for deriving statewide base map data. |
| 20 | 3.4.2 Develop and maintain a statewide base map of Permittee owned and operated primary routes, secondary roads, surface waters, and bridge and roadway crossings of surface waters. | 3. Implement the process to update the GIS-based base map. | 3. Annually, Permit Years 2-5 | 3. Yes/No | 3 | Yes | NCDOT GIS implements the process quarterly. |
| 21 | Develop and implement a program for mapping TS4 conveyances and outfalls on primary routes in Phase I MS4 permitted areas | | | | | | |
| 21 | 3.4.3 Develop and implement a program for mapping TS4 conveyances and outfalls associated with primary routes which are located within Phase I MS4 permitted areas. The program, at a minimum, shall include mapping of major outfalls, bridge outfalls discharging directly to surface waters, and associated inlets, catch basins, conveyances, and flow directions. | 3. Integrate Phase I MS4 aggregated data and NCDOT existing data into the geodatabase. | 3. Permit Year 3 | 3. Yes/No | 3 | Yes | The TS4 Mapping Project team began integrating the Phase I MS4 aggregated geospatial stormwater conveyance data and NCDOT existing data into a geodatabase. |

| Program Area BMPs, Measurable Goals, Schedule for Implementation, and Annual Reporting Metrics | | | | | | | |
|--|--|---|-----------------------------|-------------------------|-------------|--------------------------------|--|
| BMP No. | Permit Reference and Description of BMP | Measurable Goal(s) | Schedule for Implementation | Annual Reporting Metric | Permit Year | Annual Reporting Metric Output | Reporting Comment |
| 21 | 3.4.3 Develop and implement a program for mapping TS4 conveyances and outfalls associated with primary routes which are located within Phase I MS4 permitted areas. The program, at a minimum, shall include mapping of major outfalls, bridge outfalls discharging directly to surface waters, and associated inlets, catch basins, conveyances, and flow directions. | 4. Identify gaps in the assets, attributes, and footprint of available data and prioritize areas of TS4 field mapping in Phase I MS4 areas. | 4. Permit Year 3 | 4. Yes/No | 3 | Yes | The TS4 Mapping Team identified gaps in the assets, attributes, and footprint of available data. A Gap Report was prepared in July 2024 to summarize the gap analysis performed by the TS4 Mapping Team and to list mitigation strategies for data inconsistencies in the Phase I MS4 data and existing NCDOT data sources. The TS4 Mapping Team has reviewed Phase I MS4 data and established conceptual areas to prioritize once the full data reviews are completed in PY4. |
| 21 | 3.4.3 Develop and implement a program for mapping TS4 conveyances and outfalls associated with primary routes which are located within Phase I MS4 permitted areas. The program, at a minimum, shall include mapping of major outfalls, bridge outfalls discharging directly to surface waters, and associated inlets, catch basins, conveyances, and flow directions. | 5. Update existing field inventory protocols and data collection application. | 5. Permit Year 4 | 5. Yes/No | 4 | NA | Not applicable until Permit Year 4. |
| 21 | 3.4.3 Develop and implement a program for mapping TS4 conveyances and outfalls associated with primary routes which are located within Phase I MS4 permitted areas. The program, at a minimum, shall include mapping of major outfalls, bridge outfalls discharging directly to surface waters, and associated inlets, catch basins, conveyances, and flow directions. | 6. Develop or update training materials regarding TS4 Mapping Program for NCDOT staff and contractors. | 6. Permit Year 4 | 6. Yes/No | 4 | NA | Not applicable until Permit Year 4. |

| Program Area BMPs, Measurable Goals, Schedule for Implementation, and Annual Reporting Metrics | | | | | | | |
|--|---|--|-----------------------------|---|-------------|--------------------------------|--|
| BMP No. | Permit Reference and Description of BMP | Measurable Goal(s) | Schedule for Implementation | Annual Reporting Metric | Permit Year | Annual Reporting Metric Output | Reporting Comment |
| 22 | Implement field data collection for TS4 Mapping Program | | | | | | |
| 22 | Collect field data for priority areas. | 1. Perform training for NCDOT Staff and Contractors performing field data collection. | 1. Permit Year 5 | 1. Yes/No | 5 | NA | Not applicable until Permit Year 5. |
| 22 | Collect field data for priority areas. | 2. Initiate field data collection in current Phase I MS4 permitted areas. | 2. Permit Year 5 | 2. Yes/No | 5 | NA | Not applicable until Permit Year 5. |
| 23 | Establish a statewide TS4 mapping inventory | | | | | | |
| 23 | 3.4.5 Establish a statewide TS4 mapping inventory to, at a minimum, include major outfalls and bridge outfalls discharging directly to surface waters, and associated inlets, catch basins, conveyances, and flow directions associated with primary routes which are located within Phase I MS4 permitted areas. | 1. Maintain the data collected in an inventory geodatabase. | 1. Permit Year 5 | 1. Yes/No | 5 | NA | Not applicable until Permit Year 5. |
| 24 | Modify the TS4SMP to include a process and schedule for the TS4 Mapping Program | | | | | | |
| 24 | 3.4.4 Modify the TS4SMP to include a process and schedule for the TS4 Mapping Program. | 1. If the process or schedule above requires major updates, modify the TS4SMP to include a process and schedule for the TS4 Mapping Program. | 1. As needed | 1. Needed and modified/ Needed and not modified/ Not needed | 3 | Not needed | No adjustments to the schedule as outlined in the TS4SMP are needed. |

| Program Area BMPs, Measurable Goals, Schedule for Implementation, and Annual Reporting Metrics | | | | | | | |
|--|--|--|-------------------------------|------------------------------|-------------|--------------------------------|---|
| BMP No. | Permit Reference and Description of BMP | Measurable Goal(s) | Schedule for Implementation | Annual Reporting Metric | Permit Year | Annual Reporting Metric Output | Reporting Comment |
| Illicit Discharge Detection and Elimination (IDDE) Program | | | | | | | |
| 25 | Maintain a written IDDE Plan | | | | | | |
| 25 | 3.4.7 Maintain and implement a written IDDE Plan to detect and address illicit discharges, illegal dumping and any non-stormwater discharges identified as significant contributors of pollutants to the TS4. The plan will address the required components. | 2. Develop protocols to implement new procedures included in the updated IDDE Plan. | 2. Permit Year 3 | 2. Yes/No/Partial/Not Needed | 3 | Not needed | IDDE Plan was updated and IDDE reporting protocols were evaluated during the update; however, new protocols were not needed. |
| 25 | 3.4.7 Maintain and implement a written IDDE Plan to detect and address illicit discharges, illegal dumping and any non-stormwater discharges identified as significant contributors of pollutants to the TS4. The plan will address the required components. | 3. Update list of priority areas likely to have illicit discharges. | 3. Permit Year 3 | 3. Yes/No/Partial | 3 | Yes | NCDOT updated its list of priority areas likely to have illicit discharges throughout the State of NC. NCDOT maintains this information within its IDDEP training materials and related guidance documents. |
| 25 | 3.4.7 Maintain and implement a written IDDE Plan to detect and address illicit discharges, illegal dumping and any non-stormwater discharges identified as significant contributors of pollutants to the TS4. The plan will address the required components. | 4. Continue to evaluate and assess the IDDE Program. | 4. Annually, Permit Years 1-5 | 4. Yes/No/Partial | 3 | Yes | NCDOT assessed the IDDE Program and found no changes were needed. |
| 26 | Implement the IDDE Plan | | | | | | |
| 26 | Implement the IDDE Plan | 1. Identify illicit discharge and illegal dumping when performing other work on the NCDOT ROW. | 1. Ongoing, Permit Year 1-5 | 1. Yes/No/Partial | 3 | Yes | Illicit discharges and illegal dumping are identified by NCDOT staff and contractors when working on NCDOT ROW. |

| Program Area BMPs, Measurable Goals, Schedule for Implementation, and Annual Reporting Metrics | | | | | | | |
|--|--|---|--|--|-------------|--------------------------------|--|
| BMP No. | Permit Reference and Description of BMP | Measurable Goal(s) | Schedule for Implementation | Annual Reporting Metric | Permit Year | Annual Reporting Metric Output | Reporting Comment |
| 26 | Implement the IDDE Plan | 2. Verify illicit discharges and illegal dumps reported by NCDOT staff or the public. | 2. As needed, Permit Years 1-5 | 2. Number of verified illicit discharges and illegal dumps | 3 | 3 | NCDOT identified and field-verified 1 illicit discharge and 1 illegal dumping site that were reported to IDDEP POC. Both reported sites were assessed by NCDOT and NCDEQ. State Highway Patrol assisted with the reported illegal dumping site. Note: NCDOT provided IDDEP support to western NC throughout PY3 during the Hurricane Helene response efforts, including with aiding in debris removal on NCDOT ROW. |
| 26 | Implement the IDDE Plan | 3. Report verified discharges/ illegal dumping to appropriate NCDEQ Regional Office. | 3. Ongoing as needed, Permit Years 1-5 | 3. Number of illicit discharges/ illegal dumping reports to NCDEQ | 3 | 3 | NCDOT identified and field verified 2 illicit discharges and 1 illegal dumping site that were reported to NCDEQ. |
| 26 | Implement the IDDE Plan | 4. Conduct dry weather outfall inspections. | 4. As needed, Permit Years 2-5 | 4. Report number of outfalls inspected | 3 | 133 | 133 dry weather outfall inspections were conducted during PY3 in association with the bridge outfall inventory project. |
| 26 | Implement the IDDE Plan | 5. Eliminate the source(s) of an illicit discharge from NCDOT non-roadway facilities. | 5. As needed, Permit Years 1-5 | 5. Number of illicit discharges from NCDOT non-roadway facilities eliminated/ None found | 3 | None found | NCDOT performs non-stormwater discharge assessments of its non-roadway facilities and documents if any illicit discharges are found so that they can be properly eliminated. No new illicit discharges were found at NCDOT non-roadway facilities during this permit year. |
| 27 | Maintain IDDE reporting procedure | | | | | | |
| 27 | 3.4.6 Maintain and implement standardized procedures and documentation for reporting illicit discharges and illegal dumping to the appropriate NCDOT staff for verification. | 1. Maintain a process for NCDOT staff and contractors to report observed IDDEs to appropriately trained NCDOT staff for verification. | 1. Ongoing, Permit Year 1-5 | 1. Yes/No | 3 | Yes | IDDEP process is maintained for NCDOT staff and contractors to report illicit discharges and illegal dumping incidents. |
| 27 | 3.4.6 Maintain and implement standardized procedures and documentation for reporting illicit discharges and illegal dumping to | 2. Maintain a process for IDDEs reported by the public to be submitted to | 2. Ongoing, Permit Year 1-5 | 2. Yes/No/Partial | 3 | Yes | IDDEP process is maintained for NCDOT staff and contractors to report illicit discharges and illegal dumping incidents. |

| Program Area BMPs, Measurable Goals, Schedule for Implementation, and Annual Reporting Metrics | | | | | | | |
|--|--|---|-----------------------------|-------------------------|-------------|--------------------------------|---|
| BMP No. | Permit Reference and Description of BMP | Measurable Goal(s) | Schedule for Implementation | Annual Reporting Metric | Permit Year | Annual Reporting Metric Output | Reporting Comment |
| | the appropriate NCDOT staff for verification. | appropriately trained NCDOT staff for verification. | | | | | |
| 27 | 3.4.6 Maintain and implement standardized procedures and documentation for reporting illicit discharges and illegal dumping to the appropriate NCDOT staff for verification. | 3. Appropriately trained NCDOT staff to verify reported IDDEs in a timely manner. | 3. Ongoing, Permit Year 1-5 | 3. Yes/No/Partial | 3 | Yes | IDDEs are verified within NCDOT IDDE program criteria by appropriately trained staff. |
| 27 | 3.4.6 Maintain and implement standardized procedures and documentation for reporting illicit discharges and illegal dumping to the appropriate NCDOT staff for verification. | 4. Appropriately trained NCDOT staff to report verified IDDEs to NCDEQ Regional Office and/or local government(s) having jurisdictional authority in a timely manner. | 4. Ongoing, Permit Year 1-5 | 4. Yes/No/Partial | 3 | Yes | Verified IDDEs are reported per NCDOT IDDEP criteria by appropriately trained staff. |
| 28 | Maintain IDDE tracking procedure | | | | | | |
| 28 | 3.4.8 Maintain a standard IDDE tracking and documentation procedure for verified IDDE including date observed/ reported, reporting source (staff, public, contractor, etc.), the results of the investigation/ verification, and the date any verified event was reported to appropriate NCDOT staff, NCDEQ and/or local government having authority to resolve the event. | 2. Maintain database of verified illicit discharges or illegal dumping. | 2. Ongoing, Permit Year 1-5 | 2. Yes/No | 3 | Yes | NCDOT has evaluated and updated its existing tracking database of verified illicit discharges or illegal dumping incidents. |

| Program Area BMPs, Measurable Goals, Schedule for Implementation, and Annual Reporting Metrics | | | | | | | |
|--|---|---|-----------------------------------|---|-------------|--------------------------------|--|
| BMP No. | Permit Reference and Description of BMP | Measurable Goal(s) | Schedule for Implementation | Annual Reporting Metric | Permit Year | Annual Reporting Metric Output | Reporting Comment |
| 29 | Publicize reporting mechanism to NCDOT Staff and contractors | | | | | | |
| 29 | 3.4.10 Publicize reporting mechanism to NCDOT staff and contractors. | 1. Publicize the reporting mechanism to NCDOT staff and contractors. | 1. Ongoing, Permit Year 1-5 | 1. Yes/No | 3 | Yes | NCDOT publicizes its IDEP reporting mechanism on NCDOT.gov and NCDOT Connect webpages and via NCDOT posters and brochure handouts. |
| 30 | Maintain IDDE training materials | | | | | | |
| 30 | 3.4.9 Maintain training materials on how to identify, report and document illicit discharges, illegal dumping. | 1. Maintain training materials on how to identify, report and document illicit discharges, illegal dumping. | 1. Annually, Permit Years 1-5 | 1. Yes/No/Partial | 3 | Yes | NCDOT maintains training materials on how to identify, report and document illicit discharges and illegal dumping. |
| 30 | 3.4.9 Maintain training materials on how to identify, report and document illicit discharges, illegal dumping. | 2. Update training materials as necessary. | 2. As needed, Permit Years 1-5 | 2. Need and updated/ Needed but not updated/ Not needed | 3 | Need and updated | NCDOT reviewed IDEP training materials and updated them accordingly. |
| 31 | Provide IDDE training for appropriate staff | | | | | | |
| 31 | 3.4.9 Train NCDOT staff and contractors who, as part of their normal job responsibilities, may observe an illicit discharge or illegal dumping. | 1. Maintain "train the trainer" and staff training materials. | 1. Continuously, Permit Years 1-5 | 1. Yes/No | 3 | Yes | NCDOT reviewed IDEP training materials and updated training materials accordingly. |
| 31 | 3.4.9 Train NCDOT staff and contractors who, as part of their normal job responsibilities, may observe an illicit discharge or illegal dumping. | 2. Provide "train the trainer" instruction to appropriate staff. | 2. Annually, Permit Years 1-5 | 2. Yes/No | 3 | Yes | "Train the trainer" instruction is provided to appropriate staff. |
| 31 | 3.4.9 Train NCDOT staff and contractors who, as part of their normal job responsibilities, may observe an illicit discharge or illegal dumping. | 3. Distribute materials for local trainers to train local staff. | 3. Annually, Permit Years 1-5 | 3. Yes/No | 3 | Yes | Training materials are distributed to local trainers to train local staff. |

| Program Area BMPs, Measurable Goals, Schedule for Implementation, and Annual Reporting Metrics | | | | | | | |
|--|---|---|-----------------------------------|---|-------------|--------------------------------|--|
| BMP No. | Permit Reference and Description of BMP | Measurable Goal(s) | Schedule for Implementation | Annual Reporting Metric | Permit Year | Annual Reporting Metric Output | Reporting Comment |
| 31 | 3.4.9 Train NCDOT staff and contractors who, as part of their normal job responsibilities, may observe an illicit discharge or illegal dumping. | 4. Maintain a tracking mechanism to document the "train the trainer" instruction, including the agenda/materials, date. | 4. Annually, Permit Years 1-5 | 4. Yes/No | 3 | Yes | NCDOT maintains a tracking log to document the "train the trainer" instruction, including the agenda/materials, date. |
| 31 | 3.4.9 Train NCDOT staff and contractors who, as part of their normal job responsibilities, may observe an illicit discharge or illegal dumping. | 5. Document date of "train the trainer" instruction and agenda. | 5. Continuously, Permit Years 1-5 | 5. Number of training events | 3 | 21 | Following the train-the-trainer approach, NCDOT HSP staff performed various training sessions that covered illicit discharges and illegal dumping. The IDDEP training sessions cover identification of non-stormwater discharges and IDDEP reporting procedures. |
| 31 | 3.4.9 Train NCDOT staff and contractors who, as part of their normal job responsibilities, may observe an illicit discharge or illegal dumping. | 6. Make training materials available to contractors if needed. | 6. Continuously, Permit Years 1-5 | 6. Yes/No/Not needed | 3 | Yes | Training materials are made available to contractors, as needed. |
| 31 | 3.4.9 Train NCDOT staff and contractors who, as part of their normal job responsibilities, may observe an illicit discharge or illegal dumping. | 7. Evaluate if an update to or additional training resources is needed. | 7. Annually, Permit Year 1-5 | 7. Yes/No/Not needed | 3 | Yes | NCDOT performed an evaluation of IDDEP training resources on March 20, 2025. REU determined that no updates to or additional training resources are needed at this time. |
| 32 | Provide IDDE training for appropriate contractors | | | | | | |
| 32 | 3.4.9 Train NCDOT staff and contractors who, as part of their normal job responsibilities, may observe an illicit discharge or illegal dumping. | 1. Provide training to appropriate contractors through the Level I or Level II ESC training. | 1. Continuously, Permit Years 3-5 | 1. Yes/No | 3 | Yes | Training is provided to appropriate contractors through the Level I or Level II ESC training. |
| Construction Site Runoff Control Program | | | | | | | |
| 33 | Implement Delegated Program | | | | | | |
| 33 | 3.5.1 Implement the NCDEQ Erosion and Sediment Control Program as delegated to NCDOT. | 1. Seek re-delegation of the program. | 1. Annually, Permit Years 1-5 | 1. Application submitted/ application not submitted | 3 | Application submitted | NCDOT did seek re-delegation of the program in PY3. |

| Program Area BMPs, Measurable Goals, Schedule for Implementation, and Annual Reporting Metrics | | | | | | | |
|--|---|--|-----------------------------------|---|-------------|--------------------------------|--|
| BMP No. | Permit Reference and Description of BMP | Measurable Goal(s) | Schedule for Implementation | Annual Reporting Metric | Permit Year | Annual Reporting Metric Output | Reporting Comment |
| 33 | 3.5.1 Implement the NCDEQ Erosion and Sediment Control Program as delegated to NCDOT. | 2. Continue delegation of the program. | 2. Annually, Permit Years 1-5 | 2. Program delegated/ Program not delegated | 3 | Program delegated | NCDOT received continuation of program delegation from NC SCC on November 22, 2024 (filename: SCC Minutes 11.21.24 & 2024 NCDOT Audit Decision Memo 11.22.24). |
| 33 | 3.5.1 Implement the NCDEQ Erosion and Sediment Control Program as delegated to NCDOT. | 3. Participate in an Audit of the program as directed by DEMLR. | 3. Annually, Permit Years 1-5 | 3. Audit held/ Audit not required by DEMLR | 3 | Audit held | The audit was held over the course of several months starting in May 2024 and continuing through October 2024 and consisted of multiple site visits to various selected construction projects in NCDOT Divisions. Audit results are incorporated into DEMLR's Final Report titled "Annual Review of the ESC Program Delegation to the NCDOT Division of Highways" dated 2024. Approved on November 21, 2024. |
| 34 | Incorporate the requirements of NCG010000 into NCDOT's delegated ESC Program | | | | | | |
| 34 | 3.5.2 Incorporate the requirements of NCG010000 into NCDOT's delegated ESC Program. | 1. Develop a project-specific ESC plan incorporating the requirements of NCG010000 to be reviewed and approved by NCDOT. | 1. Continuously, Permit Years 1-5 | 1. Number of ESC plans developed | 3 | 468 | 468 ESC plans were developed in PY3. |
| 34 | 3.5.2 Incorporate the requirements of NCG010000 into NCDOT's delegated ESC Program. | 2. Maintain ESC program guidance on NCDOT website. | 2. Continuously, Permit Years 1-5 | 2. Yes/No | 3 | Yes | Information regarding ESC for existing NCDOT programs is maintained on NCDOT Connect site. |
| 34 | 3.5.2 Incorporate the requirements of NCG010000 into NCDOT's delegated ESC Program. | 3. Maintain the NCDOT Erosion and Sediment Control Design and Construction Manual. | 3. Continuously, Permit Years 1-5 | 3. Yes/No | 3 | Yes | NCDOT Erosion and Sediment Control Design and Construction Manual is maintained and available on NCDOT's Connect site. Current comprehensive revision is ongoing with expected completion date of 2025. |
| 34 | 3.5.2 Incorporate the requirements of NCG010000 into NCDOT's delegated ESC Program. | 4. Maintain a program of routine inspections including NPDES Self-Monitoring and SPCA Self- Inspections. | 4. Weekly, Permit Years 1-5 | 4. Yes/No | 3 | Yes | NCDOT maintains its NPDES Self-Monitoring and SPCA Self-Inspections program for construction and maintenance projects. |
| 34 | 3.5.2 Incorporate the requirements of NCG010000 into NCDOT's delegated ESC Program. | 5. Maintain program of compliance inspections at active construction sites. | 5. Monthly, Permit Years 1-5 | 5. Yes/No | 3 | Yes | NCDOT maintains its program of compliance inspections with records at active construction sites. |

| Program Area BMPs, Measurable Goals, Schedule for Implementation, and Annual Reporting Metrics | | | | | | | |
|--|--|--|-----------------------------------|-------------------------|-------------|--------------------------------|---|
| BMP No. | Permit Reference and Description of BMP | Measurable Goal(s) | Schedule for Implementation | Annual Reporting Metric | Permit Year | Annual Reporting Metric Output | Reporting Comment |
| 34 | 3.5.2 Incorporate the requirements of NCG010000 into NCDOT's delegated ESC Program. | 6. Maintain a database of inspections and corrective actions. | 6. Continuously, Permit Years 1-5 | 6. Yes/No | 3 | Yes | NCDOT maintains its ERCON database of inspections and corrective actions. |
| 34 | 3.5.2 Incorporate the requirements of NCG010000 into NCDOT's delegated ESC Program. | 7. Issue corrective actions in response to inspections. | 7. As Needed, Permit Years 1-5 | 7. Yes/No | 3 | Yes | NCDOT issues immediate corrective actions (ICAs) in response to inspections if needed and provides follow-up for corrective actions taken. |
| 34 | 3.5.2 Incorporate the requirements of NCG010000 into NCDOT's delegated ESC Program. | 8. Halt construction activities in response to inspections. | 8. As Needed, Permit Years 1-5 | 8. Yes/No | 3 | Yes | NCDOT halts construction activities in response to inspections if needed. For the permit year, eight ICAs were issued with four ICA Extensions issued on four of the projects. |
| 35 | Construction Site Waste Management | | | | | | |
| 35 | 3.5.3 Construction site operators must control waste from such as discarded building materials, concrete truck washout, chemicals, litter, and sanitary waste. | 1. Maintain guidance on waste disposal from NCDOT construction sites. | 1. Continuously, Permit Years 1-5 | 1. Yes/No | 3 | Yes | NCDOT has reviewed existing guidance on waste disposal from NCDOT construction sites. Existing guidance is maintained on the NCDOT Connect site. |
| 35 | 3.5.3 Construction site operators must control waste from such as discarded building materials, concrete truck washout, chemicals, litter, and sanitary waste. | 2. Require construction site operators to control waste from construction sites. | 2. Continuously, Permit Years 1-5 | 2. Yes/No | 3 | Yes | Construction site operators are required to control waste from construction sites in accordance with NCDOT contract standards and provisions and state/federal laws. |
| 36 | Provide and promote a means to notify of issues | | | | | | |
| 36 | 3.5.4 Provide a means for staff, contractors, and the public to report observed erosion and sedimentation problems | 1. Maintain NCDOT's Contact Us Citizen Action Request (CARs) website. | 1. Continuously, Permit Years 1-5 | 1. Yes/No | 3 | Yes | NCDOT maintains its Contact Us CARs website (https://www.ncdot.gov/contact/Pages/default.aspx). |
| 36 | 3.5.4 Provide a means for staff, contractors, and the public to report observed erosion and sedimentation problems | 2. Observations by the public are routed to trained NCDOT staff. | 2. Continuously, Permit Years 1-5 | 2. Yes/No | 3 | Yes | NCDOT maintains its reporting mechanism for staff, contractors, and the public to report observed erosion and sedimentation problems which includes routing questions to trained staff. |

| Program Area BMPs, Measurable Goals, Schedule for Implementation, and Annual Reporting Metrics | | | | | | | |
|--|--|--|-----------------------------------|--|-------------|--------------------------------|---|
| BMP No. | Permit Reference and Description of BMP | Measurable Goal(s) | Schedule for Implementation | Annual Reporting Metric | Permit Year | Annual Reporting Metric Output | Reporting Comment |
| 36 | 3.5.4 Provide a means for staff, contractors, and the public to report observed erosion and sedimentation problems | 3. Train appropriate NCDOT Staff and contractors to notify site-specific staff as part of Construction Program training. | 3. Continuously, Permit Years 1-5 | 3. Yes/No | 3 | Yes | As part of Construction Program training, NCDOT trains appropriate staff and contractors to notify the site-specific staff. |
| 37 | Manage ESC on Borrow Pits and Waste Pile Projects | | | | | | |
| 37 | 3.5.6 Manage ESC on Borrow Pits and Waste Pile Projects including activities at NCDOT ferry terminals associated with dredging activities and contractor-owned or leased borrow pits associated with NCDOT projects. | 1. Maintain policies to implement ESC measures on non-commercial borrow pits/waste piles. | 1. Continuously, Permit Years 1-5 | 1. Yes/No | 3 | Yes | NCDOT maintains policies to implement ESC measures on non-commercial borrow pits/waste piles and updates them as needed. |
| 37 | 3.5.6 Manage ESC on Borrow Pits and Waste Pile Projects including activities at NCDOT ferry terminals associated with dredging activities and contractor-owned or leased borrow pits associated with NCDOT projects. | 2. Develop and implement an approved reclamation plan on non-commercial borrow pit/waste pile projects. The reclamation measures utilized shall be in keeping with the reclamation program established by the North Carolina Mining and Energy Commission. | 2. Continuously, Permit Years 1-5 | 2. Number of new reclamation plans implemented | 3 | 220 | Reclamation plans are tracked by REU Field Operations staff. Values reported are from ERCON database. Total 220 reclamation plans on 163 projects as of 8/6/2025, with breakdown of 170 reclamation plans on active projects and 50 reclamation plans on projects completed during PY3. Additionally, the Ferry Division performed dredging operations utilizing spoil sites at four facilities including the NC State Shipyard and three Ferry Terminals in PY3. |
| 37 | 3.5.6 Manage ESC on Borrow Pits and Waste Pile Projects including activities at NCDOT ferry terminals associated with dredging activities and contractor-owned or leased borrow pits associated with NCDOT projects. | 3. Maintain policies to implement appropriate management measures to treat borrow pit discharges for given conditions. | 3. Continuously, Permit Years 1-5 | 3. Yes/No | 3 | Yes | REU maintains policies for implementing ESC measures to treat borrow pit and waste site discharges on NCDOT Connect site and maintains them as needed. |

| Program Area BMPs, Measurable Goals, Schedule for Implementation, and Annual Reporting Metrics | | | | | | | |
|--|--|---|-----------------------------------|---|-------------|--------------------------------|---|
| BMP No. | Permit Reference and Description of BMP | Measurable Goal(s) | Schedule for Implementation | Annual Reporting Metric | Permit Year | Annual Reporting Metric Output | Reporting Comment |
| 37 | 3.5.6 Manage ESC on Borrow Pits and Waste Pile Projects including activities at NCDOT ferry terminals associated with dredging activities and contractor-owned or leased borrow pits associated with NCDOT projects. | 4. Inspect and maintain borrow pit sites. | 4. Continuously, Permit Years 1-5 | 4. Yes/No | 3 | Yes | Borrow pit sites are inspected and maintained. |
| 37 | 3.5.6 Manage ESC on Borrow Pits and Waste Pile Projects including activities at NCDOT ferry terminals associated with dredging activities and contractor-owned or leased borrow pits associated with NCDOT projects. | 5. Maintain training material and instruct field personnel overseeing borrow pit operations. | 5. Continuously, Permit Years 1-5 | 5. Yes/No | 3 | Yes | Training program material and instruction of field personnel overseeing borrow pit operations is maintained. |
| 37 | 3.5.6 Manage ESC on Borrow Pits and Waste Pile Projects including activities at NCDOT ferry terminals associated with dredging activities and contractor-owned or leased borrow pits associated with NCDOT projects. | 6. Evaluate and implement appropriate new/innovative technologies. | 6. Continuously, Permit Years 1-5 | 6. Yes/No | 3 | Yes | NCDOT evaluates and implements new and innovative technologies for ESC as part of NCDOT's Products Evaluation Program and NCDOT's Research Program. |
| 37 | 3.5.6 Manage ESC on Borrow Pits and Waste Pile Projects including activities at NCDOT ferry terminals associated with dredging activities and contractor-owned or leased borrow pits associated with NCDOT projects. | 7. If a Division of Waste Management permit is required, obtain facility-specific coverage under a separate NPDES industrial stormwater permit. | 7. As needed, Permit Years 1-5 | 7. Needed and acquired/ Needed and not acquired/ Not needed | 3 | Not needed | No separate DWM permits were needed in this permit year. |
| 38 | Maintain a list of projects subject to Delegated Program and NCG010000 | | | | | | |
| 38 | 3.5.8 Maintain a current list of construction projects, borrow pits, waste piles, and dredge spoil piles subject to the delegated Erosion and Sediment Control Program and General Permit No. NCG010000 requirements | 2. Maintain a list of projects subject to the delegated Erosion and Sediment Control Program and General Permit No. NCG010000 requirements. | 2. Continuously, Permit Years 1-5 | 2. Number of projects | 3 | 442 | Borrow pits and waste piles are considered part of the associated construction source project. |

| Program Area BMPs, Measurable Goals, Schedule for Implementation, and Annual Reporting Metrics | | | | | | | |
|--|--|---|-----------------------------------|--|-------------|---|---|
| BMP No. | Permit Reference and Description of BMP | Measurable Goal(s) | Schedule for Implementation | Annual Reporting Metric | Permit Year | Annual Reporting Metric Output | Reporting Comment |
| 39 | Provide training on erosion and sediment control (ESC) to appropriate staff | | | | | | |
| 39 | 3.5.9 Provide or require equivalent stormwater pollution awareness training for appropriate NCDOT personnel and contractors involved in construction activities. | 1. Train NCDOT staff on implementation of appropriate ESC design and applicable components of NCG010000. | 1. Continuously, Permit Years 1-5 | 1. Number of staff with Level III ESC/SW Certification | 3 | 739 individuals with Level III ESC/SW Certification | 166 NCDOT staff with current Level 3 ESC certification, and 573 other individuals (private engineering consultants, contractors, municipal staff, and county staff) with current Level 3 ESC certification, equals 739 total. |
| 39 | 3.5.9 Provide or require equivalent stormwater pollution awareness training for appropriate NCDOT personnel and contractors involved in construction activities. | 2. Require appropriate contractors to be trained on implementation of appropriate ESC design and applicable components of NCG010000. | 2. Continuously, Permit Years 1-5 | 2. Yes/No | 3 | Yes | NCDOT has specific contract language for required Level I and Level II personnel on projects. |
| 39 | 3.5.9 Provide or require equivalent stormwater pollution awareness training for appropriate NCDOT personnel and contractors involved in construction activities. | 3. Provide construction staff with training on general stormwater awareness, waste management identification of stormwater pollution potential, appropriate spill response actions. | 3. Continuously, Permit Years 1-5 | 3. Yes/No | 3 | Yes | NCDOT provides Level I & II training through NC State University for appropriate NCDOT personnel and contractors involved in construction activities. |
| 39 | 3.5.9 Provide or require equivalent stormwater pollution awareness training for appropriate NCDOT personnel and contractors involved in construction activities. | 4. Document date of training, names of staff trained, and agenda. | 4. Continuously, Permit Years 1-5 | 4. Number of training events | 3 | 22 total Level I&II training events held | 22 total Level I&II training events were held in CY 2024. This includes 4 Level 1 Initial and 4 Level I Recertification, & 5 Level 2 Initial and 5 Level II Recertification, plus on-demand virtual courses for Level I and II. Additionally, 2 Level III Initial and 2 Level III Recertification training events were held. Training program agendas are maintained. Training event documentation includes training session dates and attendees. |
| 39 | 3.5.9 Provide or require equivalent stormwater pollution awareness training for appropriate NCDOT personnel and contractors involved in construction activities. | 5. Make training materials available to contractors. | 5. Continuously, Permit Years 1-5 | 5. Yes/No | 3 | Yes | NCDOT makes Level I&II training program materials available to contractors. Training materials are maintained on NCDOT Connect site and also provided during classes (maintained by North Carolina State University (NCSU); this includes hardcopy of materials and flip guide. |

| Program Area BMPs, Measurable Goals, Schedule for Implementation, and Annual Reporting Metrics | | | | | | | |
|--|--|---|-----------------------------------|---|-------------|---|---|
| BMP No. | Permit Reference and Description of BMP | Measurable Goal(s) | Schedule for Implementation | Annual Reporting Metric | Permit Year | Annual Reporting Metric Output | Reporting Comment |
| BMP Retrofit Program | | | | | | | |
| 40 | Identify Potential Retrofit Locations | | | | | | |
| 40 | Identify potential locations to retrofit that address pollutant loading. | 1. Maintain a database of potential retrofit locations. | 1. Continuously, Permit Years 1-5 | 1. Yes/No | 3 | Yes | NCDOT maintains the ROSS database of potential retrofit locations located within NCDOT's AGOL GO!NC portal, and also maintains a tracking system of on-going retrofit projects. |
| 40 | Identify potential locations to retrofit that address pollutant loading. | 2. Add new locations identified each year to database | 2. Continuously, Permit Years 1-5 | 2. Number of new locations added to database and total number of locations | 3 | NA | NCDOT performed the following reviews in PY3: HUC-12s completely desktop reviewed = 31; Retrofit Investigation Areas desktop reviewed = 2,179; and ROSS sites identified for field review = 357. The total number of Retrofit Investigation Areas statewide maintained in ROSS is 78,665. |
| 41 | Complete Retrofits | | | | | | |
| 41 | 3.6.1.a Complete a total of 70 retrofits over the 5-year term of this permit. Maintain a retrofit inventory tracking system. | 1. Design and construct or implement retrofits appropriate for the identified pollutants of concern. More than one retrofit can be located at one location. | 1. Continuously, Permit Years 1-5 | 1. Number of retrofits completed within the permit year and the total number of retrofits over all permit terms | 3 | No retrofits completed/ awarded in this permit year. 348 total retrofits completed since Permit Term I. | NCDOT continues to design and construct retrofits appropriate for the identified pollutants of concern. BMP Retrofits are tracked on a secured online SharePoint list. |
| 41 | 3.6.1.a Complete a total of 70 retrofits over the 5-year term of this permit. Maintain a retrofit inventory tracking system. | 2. Maintain a retrofit inventory tracking system. Track status of retrofits. | 2. Continuously, Permit Years 1-5 | 2. Number of retrofits in development within the permit year | 3 | 22 BMP retrofits in development in PY3. | NCDOT maintains a BMP retrofit inventory tracking system which includes tracking of BMP retrofits currently in development. |
| 41 | 3.6.1.a Complete a total of 70 retrofits over the 5-year term of this permit. Maintain a retrofit inventory tracking system. | 3. Incorporate finished SCM retrofits into the I&M program. | 3. Continuously, Permit Years 1-5 | 3. Yes/No | 3 | Yes | BMP retrofits are tracked and when construction is completed, they are added to NCDOT's SCMS database as a new SCM. |
| 41 | 3.6.1.a Complete a total of 70 retrofits over the 5-year term of this permit. Maintain a retrofit inventory tracking system. | 4. Verify 70 retrofits are completed within the 5-year term of the permit. | 4. Once, Permit Year 5 | 4. Yes/No | 5 | NA | Not applicable until Permit Year 5. |

| Program Area BMPs, Measurable Goals, Schedule for Implementation, and Annual Reporting Metrics | | | | | | | |
|--|--|---|-----------------------------------|---|-------------|--------------------------------|--|
| BMP No. | Permit Reference and Description of BMP | Measurable Goal(s) | Schedule for Implementation | Annual Reporting Metric | Permit Year | Annual Reporting Metric Output | Reporting Comment |
| 42 | Replace Retrofits that have been removed | | | | | | |
| 42 | 3.6.1.b Implement a replacement retrofit for any retrofit completed after the effective date of this permit and subsequently removed from service. | 1. Evaluate if any previously credited retrofits have been removed from service. | 1. Annually, Permit Years 1-5 | 1. Number of retrofits removed within the permit year | 3 | 0 removed | NCDOT evaluated if any previously credited retrofits have been removed from service since May 1, 2022 and none were removed. |
| 42 | 3.6.1.b Implement a replacement retrofit for any retrofit completed after the effective date of this permit and subsequently removed from service. | 2. Develop a procedure to identify existing retrofits that are to be removed when planning a new project. | 2. Permit Years 2-3 | 2. Yes/No | 3 | Yes | Project Engineers utilize available ATLAS screening tool and complete the QC/QA Checklist as required which includes requirement to identify any existing SCM (including retrofits) that are to be impacted (e.g., removed) when planning a new project. |
| 42 | 3.6.1.b Implement a replacement retrofit for any retrofit completed after the effective date of this permit and subsequently removed from service. | 3. Initiate a plan for a new retrofit for each applicable retrofit removed. | 3. As needed, Permit Years 1-5 | 3. Number of replacement retrofits initiated within the permit year | 3 | 0 | NCDOT tracks BMP retrofits and there were no replacement retrofits needed in PY3; therefore, no plans were initiated. |
| 42 | 3.6.1.b Implement a replacement retrofit for any retrofit completed after the effective date of this permit and subsequently removed from service. | 4. Update retrofit inventory tracking system with replacement retrofits. | 4. As needed, Permit Years 1-5 | 4. Needed and updated/ Needed but not updated/ Not needed | 3 | Not needed | NCDOT evaluated its BMP retrofit tracking system and determined that no updates were needed in PY3. |
| 43 | Maintain approved construction drawings and as-built plans | | | | | | |
| 43 | 3.6.1.d Maintain approved construction drawings and as-built plans consistent with the permit requirement under 3.6.3(d) below for each structural retrofit established under this permit. | 1. Maintain approved construction drawings and as-built plans consistent with the permit requirement under 3.6.3(d) for each structural retrofit established after the effective date of this permit. | 1. Continuously, Permit Years 4-5 | 1. Yes/No | 4 | NA | Not applicable until Permit Year 4. |

| Program Area BMPs, Measurable Goals, Schedule for Implementation, and Annual Reporting Metrics | | | | | | | |
|--|--|--|--|---|-------------|-----------------------------------|---|
| BMP No. | Permit Reference and Description of BMP | Measurable Goal(s) | Schedule for Implementation | Annual Reporting Metric | Permit Year | Annual Reporting Metric Output | Reporting Comment |
| BMP Toolbox | | | | | | | |
| 44 | Maintain a BMP Toolbox | | | | | | |
| 44 | The Toolbox will include appropriate uses/ anticipated applications and design criteria. | 2. Evaluate new BMP types and design elements and recent research to assess if the existing Toolbox needs to be updated. | 2. Annually, Permit Years 1-5 | 2. Yes/No new BMP types applicable/ New BMP types were not evaluated | 3 | Yes, BMP Toolbox is being updated | Updates to the BMP Toolbox are being made and nearing completion. NCDOT expects to submit the updated Toolbox to DEQ for review and approval in PY4 |
| 44 | The Toolbox will include appropriate uses/ anticipated applications and design criteria. | 3. Update the Toolbox as necessary. | 3. Periodically, when determined necessary | 3. Toolbox updated/ Toolbox update underway/ Update not necessary | 3 | Toolbox update underway | BMP Toolbox is currently being updated. Additionally, BMP Toolbox associated training materials are also being updated. |
| 44 | The Toolbox will include appropriate uses/ anticipated applications and design criteria. | 4. Submit proposed revised or new sections of the BMP Toolbox to NCDEQ for approval prior to implementation. | 4. Periodically, when update is determined necessary | 4. Toolbox updated and submitted/ Toolbox update underway but not yet submitted/ No updates or submission | 3 | No, Toolbox update is underway | The BMP Toolbox update is nearing completion and is expected to be submitted to DEQ for review and approval in early PY4 |
| Post Construction Stormwater Program | | | | | | | |
| 45 | Develop and provide guidance for BMP Toolbox implementation and post-construction requirements | | | | | | |
| 45 | 3.6.3.a Define implementation of the approved NCDOT BMP Toolbox and post-construction SCMs in the PCSP Manual. | 1. The PCSP manual defines workflows for implementation of the approved NCDOT BMP Toolbox. | 1. Continuously, Permit Years 1-5 | 1. Yes/No/Partial | 3 | Yes | During PY3 NCDOT staff reviewed the PCSP and confirmed that the manual adequately defines workflows for implementation of the BMP Toolbox. |

| Program Area BMPs, Measurable Goals, Schedule for Implementation, and Annual Reporting Metrics | | | | | | | |
|--|--|---|-----------------------------------|--|-------------|--------------------------------|--|
| BMP No. | Permit Reference and Description of BMP | Measurable Goal(s) | Schedule for Implementation | Annual Reporting Metric | Permit Year | Annual Reporting Metric Output | Reporting Comment |
| 45 | 3.6.3.c Submit proposed updates to the PCSP to the Division for approval prior to implementation. | 3. Submit proposed revisions to the PCSP to NCDEQ for approval prior to implementation. | 3. Periodically, when updated | 3. PCSP update and submitted/ PCSP update underway but not yet submitted/ No updates or submission | 3 | Not Needed | PCSP dated May 2022 has been reviewed and does not need any updates at this time. [UPDATE-The BMP Toolbox is currently being updated but will not result in revision to the PCSP.] |
| 45 | 3.6.3.b Make relevant guidance, post-construction requirements, design standards, checklists, and/or other materials available to staff and contractors. | 2. Review PCSP to determine if updates are needed. | 2. Annually, Permit Years 2-5 | 2. Yes/No | 3 | Yes | During PY3 NCDOT reviewed the PCSP and determined that no updates were needed at this time. |
| 45 | 3.6.3.b Make relevant guidance, post-construction requirements, design standards, checklists, and/or other materials available to staff and contractors. | 4. Review non-PCSP post-construction guidance to determine if updates are needed. | 4. Annually, Permit Years 1-5 | 4. Yes/No | 3 | Yes | HSP staff reviewed other guidance including the Hydraulic Guidelines and the PDN. The Guidelines are regularly reviewed by NCDOT staff and updates occur as needed. The PDN was updated in PY3 (October 2024). Additionally, the SCM as-built policy was added to NCDOT's Construction Manual in PY3 (January 2025). |
| 45 | 3.6.3.b Make relevant guidance, post-construction requirements, design standards, checklists, and/or other materials available to staff and contractors. | 5. Update non-PCSP post-construction guidance as needed. | 5. Periodically, as needed | 5. Need and updated/ Needed but not updated/ Not needed | 3 | Yes | NCDOT updated the PDN in PY3 (October 2024), but no updates for PCSP related items was needed. Additionally, the SCM as-built policy was added to NCDOT's Construction Manual in PY3 (January 2025). |
| 46 | Make guidance available | | | | | | |
| 46 | 3.6.3.b Make relevant guidance, post-construction requirements, design standards, checklists, and/or other materials available to staff and contractors. | 1. Maintain a current version of the Post-Construction Stormwater Program (PCSP) Manual online. | 1. Continuously, Permit Years 1-5 | 1. Yes/No | 3 | Yes | During PY3 NCDOT maintained a current version of the PCSP online. |
| 46 | 3.6.3.b Make relevant guidance, post-construction requirements, design standards, checklists, and/or other materials available to staff and contractors. | 2. Maintain a current version of the BMP Toolbox Manual online. | 2. Continuously, Permit Years 1-5 | 2. Yes/No | 3 | Yes | During PY3 NCDOT maintained a current version of the BMP Toolbox online. |

| Program Area BMPs, Measurable Goals, Schedule for Implementation, and Annual Reporting Metrics | | | | | | | |
|--|--|--|-----------------------------------|-------------------------|-------------|--------------------------------|---|
| BMP No. | Permit Reference and Description of BMP | Measurable Goal(s) | Schedule for Implementation | Annual Reporting Metric | Permit Year | Annual Reporting Metric Output | Reporting Comment |
| 46 | 3.6.3.b Make relevant guidance, post-construction requirements, design standards, checklists, and/or other materials available to staff and contractors. | 3. Maintain a current version of the SCM Inspection and Maintenance Manual online. | 3. Continuously, Permit Years 1-5 | 3. Yes/No | 3 | Yes | During PY3 NCDOT maintained a current version of the SCM Inspection and Maintenance Manual online. |
| 46 | 3.6.3.b Make relevant guidance, post-construction requirements, design standards, checklists, and/or other materials available to staff and contractors. | 4. Maintain current versions of other stormwater-related design standards and guidance online. | 4. Continuously, Permit Years 1-5 | 4. Yes/No | 3 | Yes | During PY3 NCDOT maintained current versions of other stormwater-related design standards and guidance online. Examples include the Guidelines for Drainage Studies and Hydraulics Design, QC/QA checklists, Outlet Analysis guidance, Permit Drawing Guidelines, and other documents. |
| 47 | Standard Policy for drawings and as-built plans | | | | | | |
| 47 | 3.6.3.d Define and implement a standard policy for preparing and maintaining structural stormwater control measure (SCM) construction drawings and as-built plans on file. | 3. Provide training to NCDOT Staff on maintaining the construction drawings and as-built plans. | 3. Permit Year 3 | 3. Yes/No/Partial | 3 | Yes | The policy itself provides examples of details, tables, and plans sheets noting the required information for documentation. Notification of policy revision was sent to Division Construction Engineers on Jan. 22, 2025 by Brian Skeens (Assistant State Construction Engineer - Western Divisions). [UPDATE tense and language: Notification will also be given in the next Roadway Bulletin sent out to any subscribers to the list serve. In addition, the new policy addition will be mentioned at upcoming conferences. Hydraulics Unit staff provided training on March 10, 2025 to NCDOT staff at the Division Construction Engineer and Central Construction Unit, Construction Update Quarterly Meeting.] |
| 47 | 3.6.3.d Define and implement a standard policy for preparing and maintaining structural stormwater control measure (SCM) construction drawings and as-built plans on file. | 4. Implement the policy and process for all new SCMs. | 4. Permit Year 3 | 4. Yes/No/Partial | 3 | Yes | Policy has been incorporated into the Construction Manual, through expansion of the previously existing as-builts policy to now include stormwater control measures (SCMs). |
| Facilities Operation and Maintenance Program | | | | | | | |
| 48 | Maintain an Inventory of Non-roadway Facilities | | | | | | |
| 48 | 3.7.1.a Maintain an inventory of non-roadway facilities with the potential to contribute pollution to stormwater runoff. The inventory | 2. Identify non-roadway industrial activities (as listed in paragraph 1.1.4 of the permit) which are | 2. Annually, Permit Years 1-5 | 2. Yes/No | 3 | Yes | NCDOT maintains a list of its non-roadway facilities, which includes facilities that have industrial-type activities. NCDOT REU maintains the list on its server. NCDOT REU coordinates with NCDOT Division staff annually to identify any new no- |

| Program Area BMPs, Measurable Goals, Schedule for Implementation, and Annual Reporting Metrics | | | | | | | |
|--|--|---|-----------------------------------|-------------------------------------|-------------|--------------------------------|---|
| BMP No. | Permit Reference and Description of BMP | Measurable Goal(s) | Schedule for Implementation | Annual Reporting Metric | Permit Year | Annual Reporting Metric Output | Reporting Comment |
| | shall also specifically identify and include each facility that is subject to NPDES industrial stormwater permitting. | subject to NPDES industrial stormwater permitting. | | | | | roadway facilities and then determine if the non-roadway facilities would meet any industrial permit requirements. See BMP No. 52 for non-roadway industrial activities subject to NPDES industrial stormwater permitting. |
| 48 | 3.7.1.a Maintain an inventory of non-roadway facilities with the potential to contribute pollution to stormwater runoff. The inventory shall also specifically identify and include each facility that is subject to NPDES industrial stormwater permitting. | 3. Review non-roadway facilities inventory to confirm its up to date. | 3. Annually, Permit Years 2-5 | 3. Number of non-roadway facilities | 3 | 204 | NCDOT maintains a list of non-roadway facilities, including facilities that have industrial-type activities. NCDOT REU staff performed a review of facilities and determined no new facilities are subject to NPDES industrial stormwater permitting. |
| 49 | Facility Inspections and Routine Maintenance | | | | | | |
| 49 | 3.7.1.b Establish and implement specific frequencies, schedules, and standard documentation for facility inspections and routine maintenance. | 1. Establish inspection frequencies for each site in the site-specific SPPP. | 1. Continuously, Permit Years 1-5 | 1. Yes/No | 3 | Yes | Inspection frequencies have been established for each site in NCDOT's site-specific SPPPs. |
| 49 | 3.7.1.b Establish and implement specific frequencies, schedules, and standard documentation for facility inspections and routine maintenance. | 2. Continue the facility inspection program, including daily, monthly, semi-annual and annual inspections as included in the SPPP for each applicable facility. | 2. Continuously, Permit Years 1-5 | 2. Yes/No | 3 | Yes | NCDOT continues to implement facility inspections, which include daily, monthly, semi-annual, and annual inspections as outlined in each applicable facility SPPP. |
| 49 | 3.7.1.b Establish and implement specific frequencies, schedules, and standard documentation for facility inspections and routine maintenance. | 3. Document semi-annual and annual compliance inspections. | 3. Annually, Permit Years 1-5 | 3. Number of inspections | 3 | 364 inspections | NCDOT performs semi-annual and annual inspections at its non-roadway facilities with TS4 operations. NCDOT documents facility inspections on its SPPP website and within each site-specific SPPPs located on-site at the respective facilities. NCDOT performed 364 semi-annual and annual inspections at its facilities during this permit year. |

| Program Area BMPs, Measurable Goals, Schedule for Implementation, and Annual Reporting Metrics | | | | | | | |
|--|--|--|-----------------------------------|-------------------------|-------------|--------------------------------|--|
| BMP No. | Permit Reference and Description of BMP | Measurable Goal(s) | Schedule for Implementation | Annual Reporting Metric | Permit Year | Annual Reporting Metric Output | Reporting Comment |
| 49 | 3.7.1.b Establish and implement specific frequencies, schedules, and standard documentation for facility inspections and routine maintenance. | 4. Maintain a program to perform routine maintenance of material handling areas and stormwater systems at applicable non-roadway facilities. | 4. Continuously, Permit Years 1-5 | 4. Yes/No | 3 | Yes | NCDOT continues a program to perform routine maintenance of material handling areas and stormwater systems at applicable non-roadway facilities. |
| 49 | 3.7.1.b Establish and implement specific frequencies, schedules, and standard documentation for facility inspections and routine maintenance. | 5. Maintain preventative maintenance program of facility equipment and systems. | 5. Continuously, Permit Years 1-5 | 5. Yes/No | 3 | Yes | NCDOT continues to maintain a preventative maintenance program of facility equipment and systems. |
| 49 | 3.7.1.b Establish and implement specific frequencies, schedules, and standard documentation for facility inspections and routine maintenance. | 6. Maintain a program to perform maintenance if indicated during inspection, as needed. | 6. As needed, Permit Years 1-5 | 6. Yes/No | 3 | Yes | NCDOT continues to maintain a program to perform maintenance if the need is identified during an inspection. |
| 50 | Provide training to facilities staff | | | | | | |
| 50 | 3.7.1.c Provide annual staff training for facility staff on general stormwater awareness, implementing pollution prevention and good housekeeping practices, spill response, preventative maintenance, and identifying and reporting illicit discharges and illegal dumping. | 1. Maintain "train the trainer" and staff training materials. | 1. Continuously, Permit Years 1-5 | 1. Yes/No | 3 | Yes | "Train the trainer" and staff training materials are maintained and available to NCDOT trainers/personnel. NCDOT site-specific SPPPs and SPPP videos are used for training at facilities. NCDOT's IRMA BMP Guidance Manual is available to NCDOT trainers. Posters, guidance documents, and various training PPTs are also provided to trainers. |
| 50 | 3.7.1.c Provide annual staff training for facility staff on general stormwater awareness, implementing pollution prevention and good housekeeping practices, spill response, preventative maintenance, and identifying and reporting illicit discharges and illegal dumping. | 2. Provide "train the trainer" instruction to appropriate staff. | 2. Annually, Permit Years 1-5 | 2. Yes/No | 3 | Yes | Train-the-trainer instruction is provided to NCDOT Division staff, as needed. |

| Program Area BMPs, Measurable Goals, Schedule for Implementation, and Annual Reporting Metrics | | | | | | | |
|--|--|---|-----------------------------------|------------------------------|-------------|--------------------------------|---|
| BMP No. | Permit Reference and Description of BMP | Measurable Goal(s) | Schedule for Implementation | Annual Reporting Metric | Permit Year | Annual Reporting Metric Output | Reporting Comment |
| 50 | 3.7.1.c Provide annual staff training for facility staff on general stormwater awareness, implementing pollution prevention and good housekeeping practices, spill response, preventative maintenance, and identifying and reporting illicit discharges and illegal dumping. | 3. Distribute materials for local trainers to train local staff. | 3. Annually, Permit Years 1-5 | 3. Yes/No | 3 | Yes | Training materials are distributed to Division trainers so they can train local staff. |
| 50 | 3.7.1.c Provide annual staff training for facility staff on general stormwater awareness, implementing pollution prevention and good housekeeping practices, spill response, preventative maintenance, and identifying and reporting illicit discharges and illegal dumping. | 4. Maintain a tracking mechanism to document the "train the trainer" instruction, including the agenda/materials, date. | 4. Annually, Permit Years 1-5 | 4. Yes/No | 3 | Yes | NCDOT maintains a web-based tracking log that includes attributes (e.g., date, location, agenda, materials, attendees) to document train the trainer sessions. |
| 50 | 3.7.1.c Provide annual staff training for facility staff on general stormwater awareness, implementing pollution prevention and good housekeeping practices, spill response, preventative maintenance, and identifying and reporting illicit discharges and illegal dumping. | 5. Document date of "train the trainer" instruction and agenda. | 5. Continuously, Permit Years 1-5 | 5. Number of training events | 3 | 16 | In PY3, following the train-the-trainer approach, NCDOT HSP staff performed 16 training sessions for staff to address SPPP implementation, which included GH&PP, IDDEP, PM, SPR, etc. Each training session varied in length depending on the needs of the attendees. |
| 50 | 3.7.1.c Provide annual staff training for facility staff on general stormwater awareness, implementing pollution prevention and good housekeeping practices, spill response, preventative maintenance, and identifying and reporting illicit discharges and illegal dumping. | 6. Make training materials available to contractors if needed. | 6. Continuously, Permit Years 1-5 | 6. Yes/No/Not needed | 3 | Yes | Training materials are available to contractors, as needed. |

| Program Area BMPs, Measurable Goals, Schedule for Implementation, and Annual Reporting Metrics | | | | | | | |
|--|--|--|-----------------------------------|-------------------------|-------------|--------------------------------|--|
| BMP No. | Permit Reference and Description of BMP | Measurable Goal(s) | Schedule for Implementation | Annual Reporting Metric | Permit Year | Annual Reporting Metric Output | Reporting Comment |
| 50 | 3.7.1.c Provide annual staff training for facility staff on general stormwater awareness, implementing pollution prevention and good housekeeping practices, spill response, preventative maintenance, and identifying and reporting illicit discharges and illegal dumping. | 7. Evaluate if an update to or additional training resources is needed. | 7. Annually, Permit Year 1-5 | 7. Yes/No/Not needed | 3 | Yes | NCDOT performed an evaluation of existing training materials and determined that no updates to existing materials were needed. NCDOT initiated the creation of some new stormwater awareness level posters in PY3. |
| 51 | Develop, maintain, and implement SPPPs NCDOT non-roadway facilities with TS4 operations | | | | | | |
| 51 | 3.7.1.d NCDOT non-roadway facilities with TS4 operations will maintain and implement a site-specific Stormwater Pollution Prevention Plan (SPPP) to address good housekeeping and pollution prevention from their operations, and should include inspections. | 1. Implement SPPPs following USEPA and NCDEQ guidance for stormwater pollution prevention and BMPs. | 1. Continuously, Permit Years 1-5 | 1. Yes/No | 3 | Yes | NCDOT site-specific SPPPs are implemented for stormwater pollution prevention and BMPs. |
| 51 | 3.7.1.d NCDOT non-roadway facilities with TS4 operations will maintain and implement a site-specific Stormwater Pollution Prevention Plan (SPPP) to address good housekeeping and pollution prevention from their operations, and should include inspections. | 2. For new activities or facilities, the SPPP shall be developed and implemented prior to operation. | 2. Continuously, Permit Years 1-5 | 2. Yes/No/Not needed | 3 | Not needed | SPPPs were updated and implemented prior to operation for new activities at existing facilities. There were no new facilities in PY3. |
| 51 | Non-roadway facilities with TS4 operations are inspected as part of the SPPP and/or Paragraph 3.7.6 in lieu of NCG080000 requirements for stormwater point source discharges from like industrial activities, as deemed to be similar by DEMLR.[MM1] | 3. Maintain a tracking system for SPPP implementation. | 3. Continuously, Permit Years 1-5 | 3. Yes/No | 3 | Yes | SPPP implementation is tracked on-site at each site-specific SPPP binder located at each facility. Additionally, NCDOT REU tracks SPPP implementation. NCDOT also utilizes the SPPP website to aid in SPPP implementation. |

| Program Area BMPs, Measurable Goals, Schedule for Implementation, and Annual Reporting Metrics | | | | | | | |
|--|---|---|-------------------------------|-------------------------|-------------|--------------------------------|---|
| BMP No. | Permit Reference and Description of BMP | Measurable Goal(s) | Schedule for Implementation | Annual Reporting Metric | Permit Year | Annual Reporting Metric Output | Reporting Comment |
| 52 | Implement General Permit Requirements for non-roadway industrial activities | | | | | | |
| 52 | 3.7.1.3-Develop, maintain, and implement requirements in accordance with the current NPDES industrial stormwater general permit applicable to each facility which is subject to NPDES industrial stormwater permitting. This condition supersedes the requirement to obtain an NPDES industrial stormwater general permit Certificate of Coverage for each subject facility | 4. Update the SPPP for Manns Harbor State Shipyard to include applicable requirements of NCG190000. | 4. Permit Year 3 | 4. Yes/No | 3 | Yes | Manns Harbor State Shipyard SPPP was updated in PY3. The SPPP update included applicable requirements of NCG190000. |
| 52 | 3.7.1.3-Develop, maintain, and implement requirements in accordance with the current NPDES industrial stormwater general permit applicable to each facility which is subject to NPDES industrial stormwater permitting. This condition supersedes the requirement to obtain an NPDES industrial stormwater general permit Certificate of Coverage for each subject facility | 5. Update the SPPP for Raleigh Railcar & Locomotive Maintenance Facility to include applicable requirements of NCG080000. | 5. Permit Year 3 | 5. Yes/No | 3 | Yes | Raleigh Railcar & Locomotive Maintenance Facility SPPP was updated in PY3. The SPPP update included applicable requirements of NCG080000. |
| Spill Response Program | | | | | | | |
| 53 | Identify and Inventory non-roadway facilities with the potential to contaminate stormwater runoff or surface waters from spills | | | | | | |
| 53 | 3.7.2.b Maintain a current inventory of facilities that store and/or use materials that have the potential to contaminate stormwater runoff or surface waters if spilled. | 2. Implement a procedure to evaluate facilities. | 2. Annually, Permit Years 3-5 | 2. Yes/No | 3 | Yes | SPPP/SPCC Plan site review procedures are implemented at the facilities. |

| Program Area BMPs, Measurable Goals, Schedule for Implementation, and Annual Reporting Metrics | | | | | | | |
|--|---|--|-----------------------------------|--|-------------|--------------------------------|--|
| BMP No. | Permit Reference and Description of BMP | Measurable Goal(s) | Schedule for Implementation | Annual Reporting Metric | Permit Year | Annual Reporting Metric Output | Reporting Comment |
| 53 | 3.7.2.b Maintain a current inventory of facilities that store and/or use materials that have the potential to contaminate stormwater runoff or surface waters if spilled. | 3. Identify which non-roadway facilities that store and/or use materials having the potential to contaminate stormwater runoff or surface waters if spilled. | 3. Annually, Permit Years 3-5 | 3. Yes/No | 3 | Yes | REU staff have reviewed and identified which non-roadway facilities store and/or use materials that have the potential to contaminate stormwater runoff or surface waters. |
| 54 | Spill Response Procedures | | | | | | |
| 54 | 3.7.2.c Maintain and implement written spill response procedures. | 1. Maintain written spill response procedures. | 1. Continuously, Permit Years 1-5 | 1. Yes/No | 3 | Yes | Written spill response procedures are maintained via NCDOT's SPPP/SPCC Plan Template. |
| 54 | 3.7.2.c Maintain and implement written spill response procedures. | 2. Evaluate the spill response procedures and update if needed. | 2. Annually, Permit Years 1-5 | 2. Yes/No/Update not needed | 3 | Update not needed | REU reviewed spill response procedures and determined that an update to its SPPP/SPCC Plan template was not needed. However, REU did make updates to some site-specific SPPP/SPCC Plans as needed. |
| 54 | 3.7.2.c Maintain and implement written spill response procedures. | 3. Implement spill response procedures. | 3. As needed, Permit Years 1-5 | 3. Needed and implemented / Needed by not implemented / Not needed | 3 | Yes | Spill response procedures implemented via SPPP/SPCC Plans at Facilities, SPPP/SPCC website, including Form 25. |
| 55 | Provide spill response training to appropriate staff | | | | | | |
| 55 | 3.7.2.d Provide annual spill response training for facility staff who will respond to facilities that store and/or use materials that have the potential to contaminate stormwater runoff or surface waters if spilled. | 1. Maintain "train the trainer" and staff training materials. | 1. Continuously, Permit Years 1-5 | 1. Yes/No | 3 | Yes | "Train the trainer" and staff training materials are maintained and available to NCDOT trainers/personnel. NCDOT site-specific SPPP/SPCC Plans and SPPP videos are used for training at facilities. NCDOT's IRMA BMP Guidance Manual is available to NCDOT trainers. Posters, guidance documents, and various training PPTs are also provided to trainers. |
| 55 | 3.7.2.d Provide annual spill response training for facility staff who will respond to facilities that store and/or use materials that have the potential to contaminate stormwater runoff or surface waters if spilled. | 2. Provide "train the trainer" instruction to appropriate staff. | 2. Annually, Permit Years 1-5 | 2. Yes/No | 3 | Yes | NCDOT provided "Train the trainer" instruction to NCDOT staff, as needed. |

| Program Area BMPs, Measurable Goals, Schedule for Implementation, and Annual Reporting Metrics | | | | | | | |
|--|---|---|-----------------------------------|------------------------------|-------------|--------------------------------|---|
| BMP No. | Permit Reference and Description of BMP | Measurable Goal(s) | Schedule for Implementation | Annual Reporting Metric | Permit Year | Annual Reporting Metric Output | Reporting Comment |
| 55 | 3.7.2.d Provide annual spill response training for facility staff who will respond to facilities that store and/or use materials that have the potential to contaminate stormwater runoff or surface waters if spilled. | 3. Distribute materials for local trainers to train local staff. | 3. Annually, Permit Years 1-5 | 3. Yes/No | 3 | Yes | Training materials were distributed as requested to local trainers for use in training local staff. |
| 55 | 3.7.2.d Provide annual spill response training for facility staff who will respond to facilities that store and/or use materials that have the potential to contaminate stormwater runoff or surface waters if spilled. | 4. Maintain a tracking mechanism to document the "train the trainer" instruction, including the agenda/materials, date. | 4. Annually, Permit Years 1-5 | 4. Yes/No | 3 | Yes | NCDOT HSP staff maintains tracking mechanisms to document train the trainer instructions. Specific training agendas, materials, and dates of training are tracked for each instruction. NCDOT utilizes a training log for scheduled training events; Learning Management System (LMS) to track online, on-demand training; and facility SPPP/SPCC Plan binders at the facilities. |
| 55 | 3.7.2.d Provide annual spill response training for facility staff who will respond to facilities that store and/or use materials that have the potential to contaminate stormwater runoff or surface waters if spilled. | 5. Document date of "train the trainer" instruction and agenda. | 5. Continuously, Permit Years 1-5 | 5. Number of training events | 3 | 16 | Following the train-the-trainer approach, NCDOT HSP staff conducted 16 SPPP/SPCC Plan implementation training sessions for Division staff, which included NCDOT's spill prevention and response procedures. Training sessions are documented on NCDOT's training log, and include training session dates, attendees, and agenda. |
| 55 | 3.7.2.d Provide annual spill response training for facility staff who will respond to facilities that store and/or use materials that have the potential to contaminate stormwater runoff or surface waters if spilled. | 6. Make training materials available to contractors if needed. | 6. Continuously, Permit Years 1-5 | 6. Yes/No / Not needed | 3 | Yes | NCDOT continues to make training materials available to contractors. |
| 55 | 3.7.2.d Provide annual spill response training for facility staff who will respond to facilities that store and/or use materials that have the potential to contaminate stormwater runoff or surface waters if spilled. | 7. Evaluate if an update to or additional training resources are needed. | 7. Annually, Permit Year 1-5 | 7. Yes/No/Not needed | 3 | Yes | NCDOT evaluated if updates were needed to training materials resources. NCDOT evaluated training materials for Equipment Shop staff and updated the materials to include new guidance. |

| Program Area BMPs, Measurable Goals, Schedule for Implementation, and Annual Reporting Metrics | | | | | | | |
|--|---|--|-----------------------------|-------------------------|-------------|--------------------------------|---|
| BMP No. | Permit Reference and Description of BMP | Measurable Goal(s) | Schedule for Implementation | Annual Reporting Metric | Permit Year | Annual Reporting Metric Output | Reporting Comment |
| TS4 Operation and Maintenance Program | | | | | | | |
| 56 | Develop and implement standard protocols for identifying and addressing high-priority areas | | | | | | |
| 56 | 3.7.3.a Develop and implement standard protocols for identifying and addressing high priority areas which have potential for discharge of pollutants to surface waters. | 2. Implement protocol to identify high priority areas | 2. Permit Year 3 | 2. Yes/No | 3 | Yes | Initial draft protocols were provided to and reviewed by Division DME/ADME staff in PY3. Division staff provided feedback on the protocols, which were then finalized. NCDOT began the process of implementing the protocols, which will continue in PY4. |
| 56 | 3.7.3.a Develop and implement standard protocols for identifying and addressing high priority areas which have potential for discharge of pollutants to surface waters. | 3. Develop protocols for selecting BMPs to address high priority areas, including prioritizing specific areas with highest potential impacts | 3. Permit Year 3 | 3. Yes/No | 3 | Yes | Protocols for selecting BMPs to address high priority areas were developed; the protocols include those that prioritize specific areas with highest potential impacts. |
| 56 | 3.7.3.a Develop and implement standard protocols for identifying and addressing high priority areas which have potential for discharge of pollutants to surface waters. | 4. Develop training on standard protocols for identifying and addressing high priority areas | 4. Permit Year 3 | 4. Yes/No | 3 | Yes | Training materials were developed on standard protocols for identifying and addressing high priority areas. |
| 57 | Implement BMPs to reduce or eliminate the discharge of pollutants from high-priority areas | | | | | | |
| 57 | 3.7.3.b Implement BMPs to reduce or eliminate the discharge of pollutants from high-priority areas. BMPs may include capture technologies; storm drain inlet grate design to minimize the entry of pollutants into the storm sewer system; roadway sweeping; litter and debris removal; catch basin and inlet inspections and cleaning, or other appropriate practices. | 1. Establish a schedule to implement BMPs requiring significant design and funding for prioritized locations. | 1. Permit Year 4 | 1. Yes/No | 4 | NA | Not applicable until Permit Year 4. |

| Program Area BMPs, Measurable Goals, Schedule for Implementation, and Annual Reporting Metrics | | | | | | | |
|--|---|--|-----------------------------------|--|-------------|--|---|
| BMP No. | Permit Reference and Description of BMP | Measurable Goal(s) | Schedule for Implementation | Annual Reporting Metric | Permit Year | Annual Reporting Metric Output | Reporting Comment |
| 57 | 3.7.3.b Implement BMPs to reduce or eliminate the discharge of pollutants from high-priority areas. BMPs may include capture technologies; storm drain inlet grate design to minimize the entry of pollutants into the storm sewer system; roadway sweeping; litter and debris removal; catch basin and inlet inspections and cleaning, or other appropriate practices. | 2. Perform road sweeping activities in selected areas | 2. Continuously, Permit Years 1-5 | 2. Documented lane miles swept | 3 | 20,319 lane miles swept | NCDOT Divisions 1-14 perform road sweeping activities in selected areas. NCDOT Divisions utilize both NCDOT Forces and Contractors to perform road sweeping activities. NCDOT REU maintains a Division Sweeping tracking spreadsheet on REU's server. |
| 57 | 3.7.3.b Implement BMPs to reduce or eliminate the discharge of pollutants from high-priority areas. BMPs may include capture technologies; storm drain inlet grate design to minimize the entry of pollutants into the storm sewer system; roadway sweeping; litter and debris removal; catch basin and inlet inspections and cleaning, or other appropriate practices. | 3. Perform litter and debris removal activities in selected areas. | 3. Continuously, Permit Years 1-5 | 3. Yes /No (pounds of litter to be included in total amount collected) | 3 | Yes (12,656,160 pounds of litter collected in CY 2024) | NCDOT performed litter and debris removal activities statewide in selected areas. Total pounds collected in CY 2024 is tracked in NCDOT's LM system website and published in NCDOT's "2024 NC Interagency Litter Report: Litter Cleanup, Education/Prevention and Enforcement". The report and summary table is available to the public on NCDOT's Litter Management website at https://www.ncdot.gov/initiatives-policies/environmental/litter-management/Pages/ . Additionally, I-77 MP collected 234,795 lbs of litter and debris in CY 2024 from their corridor (see Appendix A). |
| 57 | 3.7.3.b Implement BMPs to reduce or eliminate the discharge of pollutants from high-priority areas. BMPs may include capture technologies; storm drain inlet grate design to minimize the entry of pollutants into the storm sewer system; roadway sweeping; litter and debris removal; catch basin and inlet inspections and cleaning, or other appropriate practices. | 4. Initiate implementation of BMPs requiring significant design and funding for prioritized locations. | 4. Continuously, Permit Years 4-5 | 4. Yes/No | 4 | NA | Not applicable until Permit Year 4. |

| Program Area BMPs, Measurable Goals, Schedule for Implementation, and Annual Reporting Metrics | | | | | | | |
|--|---|--|-----------------------------------|---------------------------------------|-------------|--------------------------------|---|
| BMP No. | Permit Reference and Description of BMP | Measurable Goal(s) | Schedule for Implementation | Annual Reporting Metric | Permit Year | Annual Reporting Metric Output | Reporting Comment |
| 57 | 3.7.3.b Implement BMPs to reduce or eliminate the discharge of pollutants from high-priority areas. BMPs may include capture technologies; storm drain inlet grate design to minimize the entry of pollutants into the storm sewer system; roadway sweeping; litter and debris removal; catch basin and inlet inspections and cleaning, or other appropriate practices. | 5. Implement BMPs based on an established schedule. | 5. Continuously, Permit Years 4-5 | 5. Number of BMPs implemented | 4 | NA | Not applicable until Permit Year 4. |
| 58 | Maintain the TS4 collection system | | | | | | |
| 58 | 3.7.3.c Establish, maintain, and implement specific frequencies, schedules, and standard documentation for inspection, operation, and maintenance of the TS4. | 3. Update existing training on inspecting, maintaining, and documenting maintenance on the collection system including catch basins, inlets, outfalls and conveyances. | 3. Permit Years 3-5 | 3. Yes/No/ Updates were not necessary | 3 | Updates not needed | NCDOT determined that updates to existing training on the inspection, maintenance, and documenting maintenance on NCDOT's collection system was not needed at this time. |
| 58 | 3.7.3.c Establish, maintain, and implement specific frequencies, schedules, and standard documentation for inspection, operation, and maintenance of the TS4. | 5. Integrate new practices into scheduled maintenance on the TS4 collection system on an established schedule. | 4. Continuously, Permit Years 4-5 | 4. Yes/No | 4 | NA | Not applicable until Permit Year 4. |
| 58 | 3.7.3.c Establish, maintain, and implement specific frequencies, schedules, and standard documentation for inspection, operation, and maintenance of the TS4. | 4. Perform current practices of scheduled maintenance on the TS4 collection system on an established schedule. | 4. Continuously, Permit Years 1-3 | 4. Yes/No | 3 | Yes | NCDOT Division staff perform scheduled maintenance on the TS4 collection system on established schedules. Records of scheduled maintenance are maintained in each Division. |

| Program Area BMPs, Measurable Goals, Schedule for Implementation, and Annual Reporting Metrics | | | | | | | |
|--|---|---|-----------------------------------|-------------------------|-------------|--------------------------------|---|
| BMP No. | Permit Reference and Description of BMP | Measurable Goal(s) | Schedule for Implementation | Annual Reporting Metric | Permit Year | Annual Reporting Metric Output | Reporting Comment |
| 58 | 3.7.3.c Establish, maintain, and implement specific frequencies, schedules, and standard documentation for inspection, operation, and maintenance of the TS4. | 6. Perform unscheduled maintenance on the TS4 collection system based on maintenance needs identified after significant storm events, citizen complaints, or as identified during other operations. | 6. Continuously, Permit Years 1-5 | 6. Yes/No | 3 | Yes | NCDOT Division staff perform unscheduled maintenance on the TS4 collection system based on maintenance needs identified after significant storm events, citizen complaints, or as identified during other operations. Records of unscheduled maintenance are maintained in each Division. |
| 59 | Provide operation and maintenance training | | | | | | |
| 59 | 3.7.3 d Train maintenance staff and contractors on stormwater awareness and pollution prevention, performing TS4 inspections, identifying and reporting issues, and maintaining the collection system including catch basins, inlets, outfalls and conveyances. | 1. Train appropriate staff on stormwater awareness pollution prevention training in conjunction with the facility where staff are located. | 1. Annually, Permit Years 1-5 | 1. Yes/No | 3 | Yes | Appropriate NCDOT staff are trained on stormwater awareness pollution prevention training in conjunction with the facility where staff are located. Training records are maintained on site at each NCDOT facility. |
| 59 | 3.7.3 d Train maintenance staff and contractors on stormwater awareness and pollution prevention, performing TS4 inspections, identifying and reporting issues, and maintaining the collection system including catch basins, inlets, outfalls and conveyances. | 2. Train appropriate staff on performing TS4 inspections, identifying and reporting issues. | 2. Annually, Permit Years 1-5 | 2. Yes/No | 3 | Yes | Appropriate NCDOT staff are trained on performing TS4 inspections, identifying and reporting issues. |
| 59 | 3.7.3 d Train maintenance staff and contractors on stormwater awareness and pollution prevention, performing TS4 inspections, identifying and reporting issues, and maintaining the collection system including catch basins, inlets, outfalls and conveyances. | 3. Train appropriate staff on maintaining the collection system including catch basins, inlets, outfalls and conveyances. | 3. Annually, Permit Years 1-5 | 3. Yes/No | 3 | Yes | Appropriate NCDOT staff are trained on maintaining the collection system. |

| Program Area BMPs, Measurable Goals, Schedule for Implementation, and Annual Reporting Metrics | | | | | | | |
|--|---|--|-------------------------------|-------------------------|-------------|--------------------------------|--|
| BMP No. | Permit Reference and Description of BMP | Measurable Goal(s) | Schedule for Implementation | Annual Reporting Metric | Permit Year | Annual Reporting Metric Output | Reporting Comment |
| 59 | 3.7.3 d Train maintenance staff and contractors on stormwater awareness and pollution prevention, performing TS4 inspections, identifying and reporting issues, and maintaining the collection system including catch basins, inlets, outfalls and conveyances. | 4. Develop a procedure to implement training requirements for applicable contractor staff. | 4. Permit Year 4 | 4. Yes/No | 4 | NA | Not applicable until Permit Year 4. |
| 59 | 3.7.3 d Train maintenance staff and contractors on stormwater awareness and pollution prevention, performing TS4 inspections, identifying and reporting issues, and maintaining the collection system including catch basins, inlets, outfalls and conveyances. | 5. Implement contractor training procedures | 5. Permit Year 5 | 5. Yes/No | 5 | NA | Not applicable until Permit Year 5. |
| 59 | 3.7.3 d Train maintenance staff and contractors on stormwater awareness and pollution prevention, performing TS4 inspections, identifying and reporting issues, and maintaining the collection system including catch basins, inlets, outfalls and conveyances. | 6. Integrate updated protocols into annual training as new protocols become available. | 6. As needed | 6. Yes/No/Not needed | 3 | Not Needed | The protocols were not updated this year; therefore, there was no need to update protocols into annual training. |
| 59 | 3.7.3 d Train maintenance staff and contractors on stormwater awareness and pollution prevention, performing TS4 inspections, identifying and reporting issues, and maintaining the collection system including catch basins, inlets, outfalls and conveyances. | 7. Review training materials annually | 7. Annually, Permit Years 1-5 | 7. Yes/No | 3 | Yes | Training materials were reviewed by HSP staff. |

| Program Area BMPs, Measurable Goals, Schedule for Implementation, and Annual Reporting Metrics | | | | | | | |
|--|---|---|-----------------------------------|---|-------------|--------------------------------|---|
| BMP No. | Permit Reference and Description of BMP | Measurable Goal(s) | Schedule for Implementation | Annual Reporting Metric | Permit Year | Annual Reporting Metric Output | Reporting Comment |
| 59 | 3.7.3 d Train maintenance staff and contractors on stormwater awareness and pollution prevention, performing TS4 inspections, identifying and reporting issues, and maintaining the collection system including catch basins, inlets, outfalls and conveyances. | 8. Update guidance as needed. | 8. Periodically as needed | 8. Need and updated/ Needed but not updated/ Not needed | 3 | Not needed | There is no need to update the guidance this permit year. |
| SCM Inspection and Maintenance Program | | | | | | | |
| 60 | Maintain an SCM Inventory | | | | | | |
| 60 | 3.7.4.a Maintain an SCM Inventory. | 1. Maintain an SCM Inventory to include, at a minimum, the SCM location and type. | 1. Continuously, Permit Years 1-5 | 1. Yes/No | 3 | Yes | SCM inventory maintained in SCMS (which includes SCM location and type). |
| 60 | 3.7.4.a Maintain an SCM Inventory. | 2. Update inventory with newly constructed SCMs as needed. | 2. Continuously, Permit Years 1-5 | 2. Number of SCMs in inventory | 3 | 1,525 | NCDOT maintains its SCM inventory and updates its inventory by adding newly constructed SCMs and removing any SCMs taken out of service. NCDOT utilizes its web-based Stormwater Control Management System (SCMS) to track its SCM inventory. |
| 61 | Perform inspections and maintenance on SCMs | | | | | | |
| 61 | 3.7.4.b Inspect and maintain each SCM in accordance with appropriate operation & maintenance criteria for the device, which shall include specific frequencies, schedules, and standard documentation | 1. Maintain the SCM I&M Manual, including written procedures and criteria for the inspection and maintenance of SCMs. | 1. Continuously, Permit Years 1-5 | 1. Yes/No | 3 | Yes | SCM I&M Manual is maintained. The manual contains detailed guidance for performing inspections and maintenance operations at NCDOT SCMs. |
| 61 | 3.7.4.b Inspect and maintain each SCM in accordance with appropriate operation & maintenance criteria for the device, which shall include specific frequencies, schedules, and standard documentation | 2. Evaluate if the SCM I&M Manual needs to be updated. | 2. Annually, Permit Years 1-5 | 2. Yes and updated/ Yes but not updated / Update not needed | 3 | Update not needed | NCDOT continues to evaluate if the SCM I&M Manual needs to be updated. |

| Program Area BMPs, Measurable Goals, Schedule for Implementation, and Annual Reporting Metrics | | | | | | | |
|--|---|--|-----------------------------------|-------------------------------------|-------------|--------------------------------|--|
| BMP No. | Permit Reference and Description of BMP | Measurable Goal(s) | Schedule for Implementation | Annual Reporting Metric | Permit Year | Annual Reporting Metric Output | Reporting Comment |
| 61 | 3.7.4.b Inspect and maintain each SCM in accordance with appropriate operation & maintenance criteria for the device, which shall include specific frequencies, schedules, and standard documentation | 3. Perform inspections and maintenance on SCMs in accordance with I&M Manual. | 3. Continuously, Permit Years 1-5 | 3. Yes/No | 3 | Yes | NCDOT performed inspections and maintenance on its SCMs in accordance with NCDOT's SCM I&M Manual. Inspections performed on 91% of subject SCMs have LOS = C or better. NCDOT performed routine maintenance on SCMs as needed throughout the permit year and completed repairs on 6 SCMs that needed non-routine maintenance. |
| 61 | 3.7.4.b Inspect and maintain each SCM in accordance with appropriate operation & maintenance criteria for the device, which shall include specific frequencies, schedules, and standard documentation | 4. Inspect newly constructed SCMs. | 4. Continuously, Permit Years 1-5 | 4. Number of new projects inspected | 3 | 12 | NCDOT has processes in place to inspect newly constructed SCMs. This process involves NCDOT REU Field Operations personnel entering new SCMs in NCDOT's SCMS inventory system during closeout of construction projects, which then triggers the need for inspections by appropriate Division Roadside Environmental staff. In CY 2024, there were 46 new SCMs entered into SCMS with 31 already inspected. |
| 61 | 3.7.4.b Inspect and maintain each SCM in accordance with appropriate operation & maintenance criteria for the device, which shall include specific frequencies, schedules, and standard documentation | 5. Track inspections and maintenance of the SCMs in the inventory. | 5. Annually, Permit Years 1-5 | 5. Yes /No | 3 | Yes | NCDOT continues to track inspections and maintenance of SCMs in its inventory. NCDOT tracks I&M activities in its web-based Stormwater Control Management System (SCMS) database and D-F tracking log. |
| 62 | Provide training to staff performing SCM inspections | | | | | | |
| 62 | 3.7.4.c Train SCM inspection and maintenance staff and contractors on inspection, operation, and maintenance of SCMs. | 1. Maintain training materials on the SCM I&M Program and how to perform and document inspections and operation. | 1. Continuously, Permit Years 1-5 | 1. Yes/No | 3 | Yes | NCDOT maintains training materials on SCM I&M Program which includes how to perform and document inspections and maintenance operations. |
| 62 | 3.7.4.c Train SCM inspection and maintenance staff and contractors on inspection, operation, and maintenance of SCMs. | 2. Provide training on the SCM I&M Program and how to perform and document inspections and operation. | 2. Annually, Permit Years 1-5 | 2. Number of staff trained | 3 | 101 | NCDOT provided training on SCM I&M Program at various workshop or individual settings. |

| Program Area BMPs, Measurable Goals, Schedule for Implementation, and Annual Reporting Metrics | | | | | | | |
|--|---|---|-----------------------------------|------------------------------|-------------|--------------------------------|---|
| BMP No. | Permit Reference and Description of BMP | Measurable Goal(s) | Schedule for Implementation | Annual Reporting Metric | Permit Year | Annual Reporting Metric Output | Reporting Comment |
| 62 | 3.7.4.c Train SCM inspection and maintenance staff and contractors on inspection, operation, and maintenance of SCMs. | 3. Make training materials available to contractors if needed. | 3. Continuously, Permit Years 1-5 | 3. Yes/No/Not needed | 3 | Yes | Training materials (e.g., NCDOT's SCM I&M Manual, Field Guide for Post-Construction Stormwater BMPs, and SCM I&M Program PowerPoint presentations) are provided to contractors, when needed. |
| 62 | 3.7.4.c Train SCM inspection and maintenance staff and contractors on inspection, operation, and maintenance of SCMs. | 4. Document date of training, names of staff trained, and agenda. | 4. Continuously, Permit Years 1-5 | 4. Number of training events | 3 | 3 | NCDOT HSP staff provided SCM inspection and maintenance program training to NCDOT staff and contractors during several workshop or group sessions. Training included specific guidance on the inspection and documentation procedures and routine maintenance of NCDOT's SCMs. Training sessions are documented on NCDOT's training log, and include training session dates, attendees, and agenda. |
| Vegetation, Pesticide and Fertilizer Management | | | | | | | |
| 63 | Provide training to vegetation management personnel | | | | | | |
| 63 | 3.7.5.a Provide annual training for vegetation management personnel, and train or require equivalent training for vegetation management contractors. Training shall consist of appropriate uses and applications of pest control products (chemical agents) and shall also cover proper mowing techniques; appropriate spill response and reporting; label-specific uses, storage and handling of landscape products, tools and equipment; and the potential for water quality impacts. | 1. Staff responsible for managing the application of pesticides will maintain certification by the North Carolina Department of Agriculture and Consumer Services (NCDA&CS) to include appropriate uses and applications of pest control products (chemical agents), label-specific uses, storage and handling of landscape products and the potential for water quality. | 1 Continuously, Permit Years 1-5 | 1. Number of staff certified | 3 | 212 | NCDA&CS reports 212 NCDOT staff members are certified. |

| Program Area BMPs, Measurable Goals, Schedule for Implementation, and Annual Reporting Metrics | | | | | | | |
|--|--|---|-----------------------------------|------------------------------|-------------|---------------------------------------|---|
| BMP No. | Permit Reference and Description of BMP | Measurable Goal(s) | Schedule for Implementation | Annual Reporting Metric | Permit Year | Annual Reporting Metric Output | Reporting Comment |
| 63 | 3.7.5.d Maintain compliance with applicable Pesticide Applicator licensing requirements. | 2. Maintain training materials to supplement certification training, as needed. | 2. Continuously, Permit Years 1-5 | 2. Yes/No | 3 | Yes | Training materials have been reviewed and are in compliance with industry standards. Training materials are maintained by REU VM staff. |
| 63 | 3.7.5.d Maintain compliance with applicable Pesticide Applicator licensing requirements. | 3. Provide general training on pollution prevention and chemical use, storage and handling, spill response and the potential for water quality for staff involved in application of pesticides and fertilizers. | 3. Annually, Permit Years 1-5 | 3. Number of staff trained | 3 | 395 | Training numbers: December 3, 2024 = 83 January 27, 2025 = 29 February 24, 2025 = 135 April 7, 2025 = 148 Total = 395 staff trained. |
| 63 | 3.7.5.d Maintain compliance with applicable Pesticide Applicator licensing requirements. | 4. Provide training on proper mowing techniques, tools and equipment; and the potential for water quality impacts to staff performing associated duties. | 4. Annually, Permit Years 1-5 | 4. Number of staff trained | 3 | 14 contractor representatives trained | There are 14 mowing contractors statewide for this permit year. NCDOT Division Roadside Environmental Engineers review contract requirements including mowing techniques and provide guidance and training to mowing contractors, as appropriate. |
| 63 | 3.7.5.d Maintain compliance with applicable Pesticide Applicator licensing requirements. | 5. Make training materials available to contractors if needed. | 5. Continuously, Permit Years 1-5 | 5. Yes/No/Not needed | 3 | Yes | NCDOT REU and Division Roadside Environmental Engineers make guidance and training materials available, as needed. |
| 63 | 3.7.5.d Maintain compliance with applicable Pesticide Applicator licensing requirements. | 6. Document date of training, names of staff trained, and agenda. | 6. Continuously, Permit Years 1-5 | 6. Number of training events | 3 | 4 training events | REU Central conducted both in-person and virtual training sessions throughout the permit year. A total of 4 different training sessions were held. |
| 63 | 3.7.5.d Maintain compliance with applicable Pesticide Applicator licensing requirements. | 7. Require equivalent training for vegetation management contractors through contract language. | 7. Continuously, Permit Years 2-5 | 7. Yes/No | 3 | Yes | Individual contract language and daily tailgate meetings are part of NCDOT's training program for contractors. Equivalent training for VM contractors is required via NCDOT VM contract language. |

| Program Area BMPs, Measurable Goals, Schedule for Implementation, and Annual Reporting Metrics | | | | | | | |
|--|---|--|-----------------------------------|-----------------------------|-------------|--------------------------------|---|
| BMP No. | Permit Reference and Description of BMP | Measurable Goal(s) | Schedule for Implementation | Annual Reporting Metric | Permit Year | Annual Reporting Metric Output | Reporting Comment |
| 63 | 3.7.5.d Maintain compliance with applicable Pesticide Applicator licensing requirements. | 7. Require equivalent training for vegetation management contractors through contract language. | 7. Continuously, Permit Years 2-5 | NA | 3 | NA | NA |
| 64 | Implement appropriate pest control methods and practices | | | | | | |
| 64 | 3.7.5.b Use biological control measures as sanctioned by North Carolina Department of Agriculture & Consumer Services (NCDA&CS). | 1. Continue to consult with NCDA&CS and North Carolina State University (NCSU), as needed, in selecting appropriate pest control methods and implementation practices. | 1. As Needed, Permit Years 1-5 | 1. Yes/No/Not needed | 3 | Yes | NCDOT coordinates with NCDA&CS and NCSU on NCDOT's VM program. NCDOT coordinates its VM programs with various Ph.D. level researchers at NCSU. Additionally, only products approved for use by NCDA&CS are used in the Department's VM program. NCDOT also coordinates various special use permits through both NCSU and NCDA&CS. |
| 64 | 3.7.5.c Utilize only EPA and/or NCDA&CS approved pesticide and fertilizer products, and apply them in accordance with the manufacturer's directions, labels, and restrictions | 2. Maintain and update the NCDOT Roadside Vegetation Management Manual as new methods and practices are adopted. | 2. As Needed, Permit Years 1-5 | 2. Yes/No/Update not needed | 3 | Update not needed | NCDOT's Vegetation Management manual has been reviewed and found it corresponds to current industry standard VM practices and no additional revisions are needed at this time. |
| 64 | 3.7.5.c Utilize only EPA and/or NCDA&CS approved pesticide and fertilizer products, and apply them in accordance with the manufacturer's directions, labels, and restrictions | 3. Restrict pesticide and fertilizer usage to those materials approved by EPA/NCDA&CS. Pesticide and fertilizer shall be used in accordance with label restrictions. | 3. Continuously, Permit Years 1-5 | 3. Yes/No | 3 | Yes | During this review period, NCDOT only used VM products that were approved by USEPA and NCDA&CS to maintain our ROW. |
| Vehicle and Equipment Maintenance Program | | | | | | | |
| 65 | Conduct inspections and preventative maintenance on vehicles and equipment | | | | | | |
| 65 | 3.7.6.a Perform routine inspections of facilities, vehicles, and equipment, and establish specific frequencies, schedules, and | 2. Maintain procedures to inspect active vehicles and equipment | 2. Continuously, Permit Years 2-5 | 2. Yes/No | 3 | Yes | NCDOT maintains procedures for inspecting active vehicles and equipment in NCDOT's fleet for maintenance needs. NCDOT State Maintenance and Division Equipment Units track |

| Program Area BMPs, Measurable Goals, Schedule for Implementation, and Annual Reporting Metrics | | | | | | | |
|--|--|---|-----------------------------------|---|-------------|--------------------------------|---|
| BMP No. | Permit Reference and Description of BMP | Measurable Goal(s) | Schedule for Implementation | Annual Reporting Metric | Permit Year | Annual Reporting Metric Output | Reporting Comment |
| | documentation for inspections, and re-inspections when issues are identified. | in NCDOT's fleet for maintenance needs. | | | | | all inspections and maintenance performed on NCDOT vehicles and equipment. |
| 65 | 3.7.6.a Perform routine inspections of facilities, vehicles, and equipment, and establish specific frequencies, schedules, and documentation for inspections, and re-inspections when issues are identified. | 4. Establish facility inspection frequencies and practices if not already included in SPPPs under Paragraph 3.7.1. | 4. Continuously, Permit Years 1-5 | 4. Yes/No / All facilities covered under 3.7.1. | 3 | Yes | NCDOT has established facility inspection frequencies and practices. |
| 65 | 3.7.6.a Perform routine inspections of facilities, vehicles, and equipment, and establish specific frequencies, schedules, and documentation for inspections, and re-inspections when issues are identified. | 5. Provide preventative maintenance on active vehicles and equipment in NCDOT's fleet. | 5. Continuously, Permit Years 1-5 | 5. Yes/No | 3 | Yes | NCDOT provides preventative maintenance on active vehicles and equipment in NCDOT's fleet. |
| 66 | Provide training to staff maintaining vehicles and equipment | | | | | | |
| 66 | 3.7.6.b Provide annual staff training for facility staff on general stormwater awareness, implementing pollution prevention and good housekeeping practices, spill response, preventative maintenance, and identifying and reporting illicit discharges and illegal dumping. | 1. Perform training on general stormwater awareness, implementing pollution prevention, good housekeeping practices and spill response in conjunction with training for facility staff. | 1. Continuously, Permit Years 2-5 | 1. Yes/No | 3 | Yes | Training on general stormwater awareness, implementing pollution prevention, good housekeeping practices and spill response is performed in conjunction with training for facility staff. |
| 66 | 3.7.6.b Provide annual staff training for facility staff on general stormwater awareness, implementing pollution prevention and good housekeeping practices, spill response, preventative maintenance, and identifying and reporting illicit discharges and illegal dumping. | 2. Perform training on identifying and reporting illicit discharges and illegal dumping in conjunction with training for facility staff. | 2. Continuously, Permit Years 2-5 | 2. Yes/No | 3 | Yes | Training on identifying and reporting illicit discharges and illegal dumping is performed in conjunction with training for facility staff. |

| Program Area BMPs, Measurable Goals, Schedule for Implementation, and Annual Reporting Metrics | | | | | | | |
|--|--|---|-----------------------------------|---|-------------|--|---|
| BMP No. | Permit Reference and Description of BMP | Measurable Goal(s) | Schedule for Implementation | Annual Reporting Metric | Permit Year | Annual Reporting Metric Output | Reporting Comment |
| 66 | 3.7.6.b Provide annual staff training for facility staff on general stormwater awareness, implementing pollution prevention and good housekeeping practices, spill response, preventative maintenance, and identifying and reporting illicit discharges and illegal dumping. | 3. Perform training on preventative maintenance. | 3. Continuously, Permit Years 2-5 | 3. Yes/No | 3 | Yes | Training on preventative maintenance is performed in conjunction with training for facility staff. |
| 66 | 3.7.6.b Provide annual staff training for facility staff on general stormwater awareness, implementing pollution prevention and good housekeeping practices, spill response, preventative maintenance, and identifying and reporting illicit discharges and illegal dumping. | 4. Maintain training materials. | 4. Continuously, Permit Years 2-5 | 4. Yes/No | 3 | Yes | "Train the trainer" and staff training materials are maintained and available to NCDOT trainers/personnel. NCDOT site-specific SPPP/SPCC Plans and SPPP videos are used for training at facilities. NCDOT's IRMA BMP Guidance Manual is available to NCDOT trainers. Posters, guidance documents, and various training PPTs are also provided to trainers. These training materials include general stormwater awareness, pollution prevention and good housekeeping practices, spill response, preventative maintenance, and identifying and reporting illicit discharges and illegal dumping. |
| Litter Management Program | | | | | | | |
| 67 | Continue to implement litter management programs | | | | | | |
| 67 | 3.7.7.a Continue to implement litter management programs to collect litter and debris and minimize discharges to surface waters. | 1. Use NCDOT Forces to collect litter/debris. | 1. Continuously, Permit Years 1-5 | 1. Document quantity of litter/debris collected | 3 | 1,663,845 pounds of litter/debris collected by NCDOT Forces | NCDOT continues to utilize NCDOT Forces to collect litter from NC roadways, which includes litter collections during NCDOT's semi-annual Litter Sweep events. NCDOT tracks specific quantities of litter collections by groups via online Pickup Reports and maintains this data on its LM website. |
| 67 | 3.7.7.a Continue to implement litter management programs to collect litter and debris and minimize discharges to surface waters. | 2. Use Contract Litter Removal services to collect litter/debris. | 2. Continuously, Permit Years 1-5 | 2. Document quantity of litter/debris collected | 3 | 8,846,415 pounds of litter/debris collected by NCDOT Contractors | NCDOT continues to use Contracted Litter Removal as a critical component of its Litter Management program for collecting litter/debris from NC roadways. NCDOT tracks specific quantities of litter collections by groups via online Pickup Reports and maintains this data on its LM website. |

| Program Area BMPs, Measurable Goals, Schedule for Implementation, and Annual Reporting Metrics | | | | | | | |
|--|---|--|-----------------------------------|--|-------------|--|---|
| BMP No. | Permit Reference and Description of BMP | Measurable Goal(s) | Schedule for Implementation | Annual Reporting Metric | Permit Year | Annual Reporting Metric Output | Reporting Comment |
| 67 | 3.7.7.a Continue to implement litter management programs to collect litter and debris and minimize discharges to surface waters. | 3. Continue Adopt-A-Highway Program. | 3. Continuously, Permit Years 1-5 | 3. Document quantity of litter/debris collected | 3 | 1,053,495 pounds of litter/debris collected by AAH volunteers | NCDOT continues to operate its Adopt-A-Highway (AAH) program for litter collection along NC roadways. Details of NCDOT's AAH program and instructions for volunteers are available at https://www.ncdot.gov/initiatives-policies/environmental/adoptahighway/Pages/default.aspx . NCDOT tracks specific quantities of litter collections by groups via online Pickup Reports and maintains this data on its LM website. |
| 67 | 3.7.7.a Continue to implement litter management programs to collect litter and debris and minimize discharges to surface waters. | 4. Continue Sponsor-A-Highway Program. | 4. Continuously, Permit Years 1-5 | 4. Document quantity of litter/debris collected | 3 | 937,515 pounds of litter/debris collected by SAH program | NCDOT continues to maintain its Sponsor-A-Highway (SAH) program. In CY 2024, NCDOT's SAH program recovered 937,515 pounds of litter and debris from NCDOT ROW. |
| 67 | 3.7.7.a Continue to implement litter management programs to collect litter and debris and minimize discharges to surface waters. | 5. Continue Swat-A-Litterbug Program. | 5. Continuously, Permit Years 1-5 | 5. Number of Swat-A-Litterbug reports mailed out | 3 | 4,898 reports mailed out | NCDOT continues to operate its Swat-A-Litterbug program which includes mailing out notices to individuals reported using NCDOT's Swat-A-Litterbug reporting mechanisms. NCDOT LM maintains a count of reports mailed out. |
| 67 | 3.7.7.a Continue to implement litter management programs to collect litter and debris and minimize discharges to surface waters. | 6. Dispose of litter collected through litter management programs. | 6. Continuously, Permit Years 1-5 | 6. Quantity of total litter/debris collected | 3 | 12,656,160 pounds of litter/debris collected for all NCDOT LM programs | NCDOT continues to implement LM programs to collect litter and debris and minimize discharges to surface waters. This includes NCDOT's CLR, AAH, and SAH programs, as well as use of NCDOT Forces. In addition to these LM programs, NCDOT tracks Other Volunteers (who collected 154,890 pounds of litter/debris). NCDOT tracks specific quantities of litter collections by groups via online Pickup Reports and maintains this data on its LM website. |
| 68 | Establish routine litter inspections and removal | | | | | | |
| 68 | 3.7.7.b Establish and implement standard processes and documentation for routine litter inspections and removal, performed at a minimum of quarterly, and including identification of high priority areas that will receive more frequent inspections, removal and/or BMPs. | 3. Implement standard processes and documentation for routine litter inspections and removal, performed at a minimum of quarterly. | 3. Continuously, Permit Years 1-5 | 3. Document quantity of litter/debris collected | 3 | 10,837,425 pounds | NCDOT continues to implement its standard processes and documentation procedures for routine litter inspections and removal. In CY 2024, NCDOT's Contract Litter Removal (CLR) program removed 8,846,415 pounds of litter, Adopt-A-Highway (AAH) program removed 1,053,495 pounds of litter, and Sponsor-A-Highway (SAH) program removed 937,515 pounds of litter. These programs performed at least quarterly removals. NCDOT Forces and Other Volunteers removed additional quantities of litter on other frequencies. |

| Program Area BMPs, Measurable Goals, Schedule for Implementation, and Annual Reporting Metrics | | | | | | | |
|--|---|---|--|-------------------------|-------------|--------------------------------|---|
| BMP No. | Permit Reference and Description of BMP | Measurable Goal(s) | Schedule for Implementation | Annual Reporting Metric | Permit Year | Annual Reporting Metric Output | Reporting Comment |
| 68 | 3.7.7.c Utilize TS4 mapping efforts to support decisions on identification of high priority areas and implementation of BMPs to prevent the discharge of litter to surface waters. | 4. Coordinate with NCDOT Division Staff to identify high priority areas where litter and debris may enter surface waters. | 4. Continuously, Permit Years 1-5 | 4. Yes/No | 3 | Yes | NCDOT Division staff continue to prioritize areas where litter and debris collection is needed when directing contractor litter removal, which includes using Primary Routes, high ADT areas, historic litter/debris problem areas, and other factors unique to each Division. HSP staff continues to coordinate with Division staff to discuss identifying high priority areas where litter and debris may enter surface waters. This includes an annual briefing at REU Symposium in December 2024 and meetings with other Division staff throughout PY3. |
| 68 | 3.7.7.c Utilize TS4 mapping efforts to support decisions on identification of high priority areas and implementation of BMPs to prevent the discharge of litter to surface waters. | 5. Utilize TS4 mapping efforts to support decisions on identification of high priority areas and implementation of BMPs to prevent the discharge of litter to surface waters. | 5. Permit Year 5 | 5. Yes/No | 5 | NA | Not applicable until Permit Year 5. |
| 68 | 3.7.7.c Utilize TS4 mapping efforts to support decisions on identification of high priority areas and implementation of BMPs to prevent the discharge of litter to surface waters. | 6. Implement more frequent inspections and litter removal in high priority areas. | 6. On established schedule, Permit Years 4-5 | 6. Yes/No | 4 | NA | Not applicable until Permit Year 4. |
| 69 | Implement BMPs to reduce or eliminate the discharge of litter and debris from high priority areas | | | | | | |
| 69 | 3.7.7.d Implement BMPs to reduce or eliminate the discharge of litter and debris from high priority areas. BMPs may include capture technologies; storm drain inlet grate design to minimize the entry of litter and debris into the storm sewer system; litter and debris removal; catch basin and inlet inspections and cleaning, or other appropriate practices. | 1. Establish a schedule to implement BMPs requiring significant design and funding for prioritized locations. | 1. Permit Year 3 | 1. Yes/No | 3 | Yes | NCDOT Divisions have established schedules that prioritize areas where litter and debris collection is needed and they direct Contract Litter Removal for these routes. Additionally, Divisions have established schedules for Litter Sweep each Fall and Spring, and other routes assigned to NCDOT Forces or volunteers throughout the year. High priority areas include Primary Routes, high ADT areas, historic litter/debris problem areas, some locations that are in close proximity to surface waters; these factors are unique to each Division. HSP staff continues to coordinate with Division staff to refine high priority areas where litter and debris may enter surface waters. |

| Program Area BMPs, Measurable Goals, Schedule for Implementation, and Annual Reporting Metrics | | | | | | | |
|--|---|---|-----------------------------------|--|-------------|--------------------------------|---|
| BMP No. | Permit Reference and Description of BMP | Measurable Goal(s) | Schedule for Implementation | Annual Reporting Metric | Permit Year | Annual Reporting Metric Output | Reporting Comment |
| 69 | 3.7.7.d Implement BMPs to reduce or eliminate the discharge of litter and debris from high priority areas. BMPs may include capture technologies; storm drain inlet grate design to minimize the entry of litter and debris into the storm sewer system; litter and debris removal; catch basin and inlet inspections and cleaning, or other appropriate practices. | 2. Perform road sweeping activities in selected areas. | 2. Continuously, Permit Years 2-5 | 2. Document lane miles swept | 3 | 20,319 lane miles swept | NCDOT performed roadway sweeping in each Division in PY3, utilizing both NCDOT Forces and contractors, which resulted in a total of 20,319 lane miles swept. |
| 69 | 3.7.7.d Implement BMPs to reduce or eliminate the discharge of litter and debris from high priority areas. BMPs may include capture technologies; storm drain inlet grate design to minimize the entry of litter and debris into the storm sewer system; litter and debris removal; catch basin and inlet inspections and cleaning, or other appropriate practices. | 3. Perform litter and debris removal activities in prioritized areas. | 3. Continuously, Permit Years 1-5 | 3. Yes /No (volume of litter to be included in total amount collected) | 3 | Yes | NCDOT continues to perform litter and debris removal activities in prioritized areas. NCDOT LM and Division Litter Managers evaluate the prioritized areas each year for litter and debris collections for its various anti-litter programs. The total litter collected in CY 2024 was 12,656,160 pounds. Additionally, I-77 MP collected 234,795 lbs of litter and debris in CY 2024 from their corridor (see Appendix A). |
| 69 | 3.7.7.d Implement BMPs to reduce or eliminate the discharge of litter and debris from high priority areas. BMPs may include capture technologies; storm drain inlet grate design to minimize the entry of litter and debris into the storm sewer system; litter and debris removal; catch basin and inlet inspections and cleaning, or other appropriate practices. | 4 Initiate implementation of BMPs requiring significant design and funding for prioritized locations. | 4. Continuously, Permit Years 4-5 | 4. Number of BMPs implemented | 4 | NA | Not applicable until Permit Year 4. |

| Program Area BMPs, Measurable Goals, Schedule for Implementation, and Annual Reporting Metrics | | | | | | | |
|--|---|---|------------------------------------|---------------------------------|-------------|--------------------------------|--|
| BMP No. | Permit Reference and Description of BMP | Measurable Goal(s) | Schedule for Implementation | Annual Reporting Metric | Permit Year | Annual Reporting Metric Output | Reporting Comment |
| 69 | 3.7.7.d Implement BMPs to reduce or eliminate the discharge of litter and debris from high priority areas. BMPs may include capture technologies; storm drain inlet grate design to minimize the entry of litter and debris into the storm sewer system; litter and debris removal; catch basin and inlet inspections and cleaning, or other appropriate practices. | 5. Implement BMPs based on an established schedule. | 5. Continuously, Permit Years 4- 5 | 5. Yes/No | 4 | NA | Not applicable until Permit Year 4. |
| Fecal Colliform Reduction Program | | | | | | | |
| 70 | Maintain a pet waste management measure | | | | | | |
| 70 | 3.7.8.a Maintain NCDOT's pet waste management measures at Rest Areas/Welcome Centers and Ferry Terminals. | 1. Post signage and make available pet waste disposal kiosks at Rest Areas/ Welcome Centers and Ferry Terminals. | 1. Continuously, Permit Years 1-5 | 1. Number of pet waste stations | 3 | 157 | NCDOT posts signage and makes available pet waste disposal kiosks at its Rest Areas/ Welcome Centers and Ferry Terminals. NCDOT maintains 161 pet waste stations across the State at these locations. NCDOT staff and contractors inspect the pet waste stations regularly to make sure the signage is legible and pet waste disposal kiosks are functional. |
| 70 | 3.7.8.a Maintain NCDOT's pet waste management measures at Rest Areas/Welcome Centers and Ferry Terminals. | 2. Provide public education materials about the impact of pet waste to water quality at Rest Areas/Welcome Centers and Ferry Terminals. | 2. Continuously, Permit Years 1-5 | 2. Yes/No | 3 | Yes | NCDOT posts signage and makes available pet waste disposal kiosks at its Rest Areas/ Welcome Centers and Ferry Terminals. NCDOT maintains 157 pet waste stations across the State at these locations. NCDOT staff and contractors inspect the pet waste stations regularly to make sure the signage is legible and pet waste disposal kiosks are functional. |
| 71 | Connect sanitary discharges to POTWs | | | | | | |
| 71 | 3.7.8.b Connect on-site septic systems at NCDOT non-roadway facilities to publicly owned treatment works (POTWs) where feasible; or properly operate and maintain the on-site septic system. | 1. Operate and maintain on-site domestic wastewater treatment systems in accordance with manufacturer's and State guidance. | 1. Continuously, Permit Years 1-5 | 1. Yes/No | 3 | Yes | NCDOT operates and maintains on-site domestic wastewater treatment systems in accordance with manufacturer's and State guidance. |

| Program Area BMPs, Measurable Goals, Schedule for Implementation, and Annual Reporting Metrics | | | | | | | |
|--|--|--|-----------------------------------|---|-------------|--|---|
| BMP No. | Permit Reference and Description of BMP | Measurable Goal(s) | Schedule for Implementation | Annual Reporting Metric | Permit Year | Annual Reporting Metric Output | Reporting Comment |
| 71 | 3.7.8.b Connect on-site septic systems at NCDOT non-roadway facilities to publicly owned treatment works (POTWs) where feasible; or properly operate and maintain the on-site septic system. | 2. Connect existing on-site domestic wastewater treatment systems to a POTW when available. | 2. Annually, Permit Years 1-5 | 2. Yes/No | 3 | Yes | NCDOT connects existing on-site domestic wastewater treatment systems to a POTW when available. No new connections are being reported in PY3. |
| 71 | 3.7.8.b Proper operation and maintenance for septic systems shall include staff training on general stormwater awareness, impacts of fecal coliform in receiving waters, and how to properly operate and maintain the septic system. | 3. Perform training on general stormwater awareness and impacts of fecal coliform in receiving waters in conjunction with training for facility staff. | 3. Continuously, Permit Years 1-5 | 3. Yes/No | 3 | Yes | NCDOT HSP staff coordinated with Division ORC Staff in Divisions 11 and 14 to make sure staff are trained. NCDOT HSP staff provided training to Division staff during SPPP implementation training sessions, which included general stormwater awareness and water quality impacts from septic waste discharges, illicit discharges and illegal dumping, and other potential stormwater pollutants. |
| 71 | 3.7.8.b Proper operation and maintenance for septic systems shall include staff training on general stormwater awareness, impacts of fecal coliform in receiving waters, and how to properly operate and maintain the septic system. | 5. Provide training for appropriate staff on how to properly operate and maintain the septic system. | 5. Continuously, Permit Years 3-5 | 5. Yes/No | 3 | Yes | Training was provided to Division staff that operate and maintain on-site septic systems. |
| Total Maximum Daily Load Program | | | | | | | |
| 72 | Track EPA-approved TMDLs | | | | | | |
| 72 | 1. Track EPA-approved TMDLs. | 1. Maintain a TMDL Tracking Database to track TMDLs that have been issued. | 1. Continuously, Permit Years 1-5 | 1. Updated/Not updated/ Update not needed since no new TMDLs were issued | 3 | Update not needed since no new TMDLs were issued | There were no new EPA approved TMDLs issued in PY3 anywhere in North Carolina. |

| Program Area BMPs, Measurable Goals, Schedule for Implementation, and Annual Reporting Metrics | | | | | | | |
|--|---|--|--------------------------------|--|-------------|--------------------------------|---|
| BMP No. | Permit Reference and Description of BMP | Measurable Goal(s) | Schedule for Implementation | Annual Reporting Metric | Permit Year | Annual Reporting Metric Output | Reporting Comment |
| 73 | Address TMDLs where NCDOT is named as a significant contributor and is assigned a unique WLA | | | | | | |
| 73 | 3.8.1 For EPA-approved TMDLs that specifically name the Permittee as a significant contributor and assigns a unique WLA to the Permittee that is separate from other sources, develop and implement water quality improvement strategies. | 1. Track the number and status of TMDLs where NCDOT is named as a significant contributor and a unique WLA is assigned to NCDOT. | 1. Annually, Permit Years 1-5 | 1. Number of applicable TMDLs | 3 | 2 | Hills Bay Embayment (White Oak River), 20-(18)c4 and Boathouse Creek, 20-31 have been identified as the two EPA approved TMDLs which name NCDOT as a significant contributor of the pollutant of concern and assign the Department a unique WLA. These TMDLs are included in the report for the Southeast White Oak River Embayments. In 2022 EPA approved TMDLs for Turkey Ck and Virginia Ck in Carteret Co. These TMDLs did assign NCDOT a unique WLA but did not label NCDOT as a significant contributor. NCDOT agrees with this assessment as the Department's WLA is a very small fraction of the total TMDL and is also a small fraction of the Margin of Safety. So, these two 2022 TMDLs were not deemed to fall under section 3.8.1 of the permit. |
| 73 | 3.8.1 For EPA-approved TMDLs that specifically name the Permittee as a significant contributor and assigns a unique WLA to the Permittee that is separate from other sources, develop and implement water quality improvement strategies. | 2. Develop a site-specific water quality improvement strategy. | 2. As needed, Permit Years 1-5 | 2. Number of new site-specific strategies developed within permit year/ New strategy in development/ Provisions for 3.8.1 were not triggered | 3 | No new TMDLs issued | There were no new EPA approved TMDLs issued in PY3. Provisions for 3.8.1 were not triggered. |
| 73 | 3.8.1 For EPA-approved TMDLs that specifically name the Permittee as a significant contributor and assigns a unique WLA to the Permittee that is separate from other sources, develop and implement water quality improvement strategies. | 3. Describe implemented improvement strategies in the annual report. Implement actions described in site-specific water quality improvement strategies | 3. Annually, Permit Years 1-5 | 3. Number of site-specific improvement strategies under which implementation activities took place | 3 | 0 | There were no TMDLs approved by EPA during this reporting period which trigger the development of site-specific improvement strategies. |

| Program Area BMPs, Measurable Goals, Schedule for Implementation, and Annual Reporting Metrics | | | | | | | |
|--|--|--|-----------------------------------|-------------------------|-------------|--------------------------------|---|
| BMP No. | Permit Reference and Description of BMP | Measurable Goal(s) | Schedule for Implementation | Annual Reporting Metric | Permit Year | Annual Reporting Metric Output | Reporting Comment |
| 74 | Address TMDLs where NCDOT is not assigned a unique WLA | | | | | | |
| 74 | 3.8.2 For approved TMDLs that have no EPA-approved WLA which specifically assigns a unique WLA to the Permittee, evaluate strategies and tailor and/or expand BMPs within the scope of this permit to reduce the TMDL pollutant(s) of concern in the named watershed(s) to the maximum extent practicable (MEP). | 1. For new projects, evaluate implementation of the BMP Toolbox and other design guidance tools to address water quality pollutants of concern to the MEP. | 1. Continuously, Permit Years 1-5 | 1. Yes/No | 3 | Yes | For new projects NCDOT implements its PCSP which defines implementation of the BMP Toolbox and other design guidance tools. |
| 74 | 3.8.2 For approved TMDLs that have no EPA-approved WLA which specifically assigns a unique WLA to the Permittee, evaluate strategies and tailor and/or expand BMPs within the scope of this permit to reduce the TMDL pollutant(s) of concern in the named watershed(s) to the maximum extent practicable (MEP). (BMP 56-58) | 2. To address existing assets, develop procedures to apply protocols for identifying high priority areas under the TS4 Operation and Maintenance Program to TMDL watersheds. | 2. Permit Year 4 | 2. Yes/No | 4 | NA | Not applicable until Permit Year 4. |
| 74 | 3.8.2 For approved TMDLs that have no EPA-approved WLA which specifically assigns a unique WLA to the Permittee, evaluate strategies and tailor and/or expand BMPs within the scope of this permit to reduce the TMDL pollutant(s) of concern in the named watershed(s) to the maximum extent practicable (MEP). | 3. Develop protocols for selecting BMPs to address high priority areas in TMDL watersheds, including prioritizing specific areas with highest potential impacts. | 3. Permit Year 4 | 3. Yes/No | 4 | NA | Not applicable until Permit Year 4. |

| Program Area BMPs, Measurable Goals, Schedule for Implementation, and Annual Reporting Metrics | | | | | | | |
|--|--|---|-------------------------------|-------------------------|-------------|--------------------------------|---|
| BMP No. | Permit Reference and Description of BMP | Measurable Goal(s) | Schedule for Implementation | Annual Reporting Metric | Permit Year | Annual Reporting Metric Output | Reporting Comment |
| 74 | 3.8.2 For approved TMDLs that have no EPA-approved WLA which specifically assigns a unique WLA to the Permittee, evaluate strategies and tailor and/or expand BMPs within the scope of this permit to reduce the TMDL pollutant(s) of concern in the named watershed(s) to the maximum extent practicable (MEP). | 4. Develop training on standard protocols for identifying and addressing high priority areas in TMDL watersheds. | 4. Permit Year 4 | 4. Yes/No | 4 | NA | Not applicable until Permit Year 4. |
| 74 | 3.8.2 For approved TMDLs that have no EPA-approved WLA which specifically assigns a unique WLA to the Permittee, evaluate strategies and tailor and/or expand BMPs within the scope of this permit to reduce the TMDL pollutant(s) of concern in the named watershed(s) to the maximum extent practicable (MEP). | 5. Utilize TS4 mapping efforts to support decisions on identification of high priority areas and implementation of BMPs to prevent the discharge of litter to surface waters. | 5. Permit Year 5 | 5. Yes/No | 4 | NA | Not applicable until Permit Year 5. |
| 75 | Describe any strategies and tailored and/or expanded measures | | | | | | |
| 75 | 3.8.3 Describe any strategies and tailored and/or expanded measures in the TS4SMP. | 1. Strategies implemented within the reporting period are described in the annual report. | 1. Annually, Permit Years 1-5 | 1. Yes/No | 3 | Yes | NCDOT outlined its strategies for the TMDL Program in Section 11 of the TS4SMP update, which was submitted to DEMLR on November 3, 2023. The TS4SMP update was approved by DEMLR on December 18, 2023. Since DEMLR's approval these strategies have been implemented. |

| Program Area BMPs, Measurable Goals, Schedule for Implementation, and Annual Reporting Metrics | | | | | | | |
|--|--|--|-----------------------------------|---|-------------|--------------------------------|--|
| BMP No. | Permit Reference and Description of BMP | Measurable Goal(s) | Schedule for Implementation | Annual Reporting Metric | Permit Year | Annual Reporting Metric Output | Reporting Comment |
| Research Program | | | | | | | |
| 76 | Facilitate Research | | | | | | |
| 76 | 3.9.1 Implement a Research Program to facilitate research to enhance or improve existing practices or develop new methods or processes to meet TS4 permit requirements. | 1. Maintain a Research Plan addressing research needs for the permit requirements. | 1. Continuously, Permit Years 1-5 | 1. Yes/No | 3 | Yes | NCDOT maintains its Research Plan. The plan is located in the HSP document library on SharePoint. |
| 76 | 3.9.1 Implement a Research Program to facilitate research to enhance or improve existing practices or develop new methods or processes to meet TS4 permit requirements. | 2. Assess needs and identify potential research projects. | 2. Annually, Permit Years 1-5 | 2. Yes/No | 3 | Yes | Internal due date is dependent on the R&D Unit and varies each year. HSP staff assessed needs, identified potential research projects, and submitted research ideas. |
| 76 | 3.9.1 Implement a Research Program to facilitate research to enhance or improve existing practices or develop new methods or processes to meet TS4 permit requirements. | 3. Evaluate the Research Plan to determine if updates are needed. | 3. Annually, Permit Years 1-5 | 3. Yes/No | 3 | Yes | NCDOT evaluated the Research Plan and determined no updates needed. |
| 76 | 3.9.1 Implement a Research Program to facilitate research to enhance or improve existing practices or develop new methods or processes to meet TS4 permit requirements. | 4. Update the Research Plan | 4. As needed | 4. Needed and updated / Needed and not updated / Not needed | 3 | Update not needed | NCDOT evaluated the Research Plan in June 2025 and determined no updates were not needed. |
| 77 | Conduct Research | | | | | | |
| 77 | 3.9.2 Conduct research with faculty and staff at state universities or other independent institutions that result in impartial quantitative assessment of stormwater from NCDOT permitted activities and/or measure structural BMP effectiveness | 1. Perform or sponsor research in accordance with Research Plan. | 1. Continuously, Permit Years 1-5 | 1. Number of active research projects related to the permit | 3 | 11 | NCDOT HU has 5 active HSP research projects and REU has 6 active HSP projects; for a total of 11 HSP-related research projects. NCDOT HSP staff perform research projects in accordance with its Research Plan. Active research projects are tracked and maintained on NCDOT's R&D portal. |

| Program Area BMPs, Measurable Goals, Schedule for Implementation, and Annual Reporting Metrics | | | | | | | |
|--|--|---|--------------------------------|---|-------------|--------------------------------|--|
| BMP No. | Permit Reference and Description of BMP | Measurable Goal(s) | Schedule for Implementation | Annual Reporting Metric | Permit Year | Annual Reporting Metric Output | Reporting Comment |
| 77 | 3.9.2 Conduct research with faculty and staff at state universities or other independent institutions that result in impartial quantitative assessment of stormwater from NCDOT permitted activities and/or measure structural BMP effectiveness | 2. Complete the Research and Development Close Out Implementation Plan form for NCDOT's Research and Development Program. | 2. As needed, Permit Years 1-5 | 2. Yes, form completed / Form not completed / No new research completed this year | 3 | Yes, form completed | In PY3, NCDOT completed the Research and Development Close Out Implementation Plan form for the appropriate research projects that closed. |

3.0 Falls and Jordan Lake GREEN Programs

Jordan Lake Rules:

15A North Carolina Administration Code

02B .0262-.0273, .0311, and

NC Session Laws 2009-216, 2009-484

Falls Lake Rules:

15A NCAC 02B .0275—.0282

Rule Requirements

The following nutrient requirements apply within the Jordan and Falls Lake Watersheds:

1. **Outfall Identification.** Identify NCDOT stormwater outfalls from Interstate, US, and NC primary routes.
2. **Illegal Discharges.** Identify and eliminate illegal discharges into the NCDOT's stormwater conveyance system.
3. **Nutrient Education Program.** Implement a Nutrient Management Education Program for NCDOT staff and contractors engaged in the application of fertilizers on highway ROW.
4. **Riparian Buffer Protection.** Meet riparian buffer and diffuse flow requirements on new and widening road projects.
5. **Nutrient Targets on Non-Road Development.** Achieve sub-watershed specific nutrient reduction targets on new non-road development projects using the NCDOT Jordan Lake Stormwater Nutrient Loading Accounting Tool (NCDOT-JLSLAT) or through another calculation method that is acceptable to NCDWR.
6. **Plan to Offset Nutrients from Baseline to Program Implementation.** Provide an estimate of, and plans for offsetting, nutrient load increases from lands developed subsequent to the baseline period but prior to implementation of the new development program (stayed in the Jordan Lake Watershed).
7. **Nutrient Removal Retrofits.** Implement six stormwater retrofit BMPs per year in the Falls Lake watershed to reduce nutrient loads until NCDOT's existing development load reduction requirements are achieved, or the lake's designated uses are restored (Falls Lake Watershed only).

Program Overview

The NC Environmental Management Commission (EMC) adopted permanent nutrient management rules for Jordan Lake and Falls Lake which became effective in 2009 and 2011, respectively. In response, NCDOT initiated the Guided Reduction of Excess Environmental Nutrients (GREEN) Program to integrate and enhance NCDOT's stormwater and nutrient management practices and to support NCDOT's compliance with the Jordan and Falls Lake Rules.

The Jordan Lake GREEN Program outlines the Department's approach to managing nutrients from new development, including new and widened roads and new non-road developments. The EMC approved the Jordan Lake GREEN Program on November 8, 2012. The Rules also include retrofit requirements to reduce nutrient loads from existing NCDOT development; however, various Session Laws have delayed this requirement.

The Falls Lake GREEN Program addresses the Department's approach to managing nutrients from new and existing developments consisting of new and widened roads, new non-road development, and existing road and non-road development. The EMC approved the Falls Lake GREEN Program on January 9, 2014. Among other things, these regulations require NCDOT to implement new training for staff and contractors, calculate nutrient loads resulting from projects and devise controls to reduce the increased loads.

Accomplishments

1. Outfall Identification

In previous years NCDOT completed field outfall identification within the Falls and Jordan watershed from open channel and pipe stormwater conveyances. During PY3, NCDOT completed the inventory of bridge outfalls that directly discharge to surface waters within the City limits of Durham and Greensboro.

2. Illegal Discharges

During PY3, NCDOT maintained and implemented a written IDDE Plan to detect and address illicit discharges, illegal dumping and any non-stormwater discharges identified as significant contributors of pollutants to the TS4. NCDOT staff and contractors working within the NCDOT ROW report incidences of observed illegal discharges and NCDOT staff follow up for verification, reporting and resolution. NCDOT utilizes an IDDEP Field Report for use by Division staff to make sure that the data needed to follow up on the illicit discharge is obtained.

NCDOT held its state-wide Litter Sweep Program during the last two weeks of September and April. Residents throughout the state participate in local efforts to help clean up North Carolina's roadways. To support this effort, NCDOT maintenance crews devote one week of their time to pick up litter and collect orange bags placed on the roadsides by volunteers. The 2024 Interagency Litter Report summarizes the State's litter cleanup, education-prevention and enforcement efforts.

Also, NCDOT continues to provide material support to the Clean Jordan Lake organization for their litter collection events for Jordan Lake.

3. Nutrient Education Program

NCDOT provides annual training for Vegetation Management personnel, and trains or requires equivalent training for Vegetation Management contractors. Training includes the following topics:

- Appropriate application of fertilizer and pest control products;
- Proper mowing techniques;
- Storage and handling of landscape material, including fertilizer and pest control products; and
- Avoiding water quality impacts associated with vegetation management.

4. Riparian Buffer Protection

NCDOT complies with all aspects of the Riparian Buffer Protection Rules on its transportation projects, and has created the following posters to support designers in compliance with both the buffer rules and NCDOT's PSCP:

1. Maximizing Shoulder Section
2. Adequate Energy Dissipation
3. Utilizing Natural Features and Drainage Pathways
4. Maximizing Vegetative Conveyances

5. Nutrient Targets on Non-Road Development

In PY3, NCDOT did not complete any new non-road projects in the Jordan Lake or Falls Lake watersheds that would be subject to NSW rules. However, NCDOT has emphasized proper inspection and maintenance of the existing SCMs on projects in the Jordan Lake and Falls Lake Watersheds (as well as state-wide). NCDOT uses its SCMS database to track inspection and maintenance of SCMs statewide, including those located within the Jordan Lake and Falls Lake watersheds. NCDOT Division Roadside Environmental Engineers maintain SCMs in the Jordan and Falls Lake watersheds. In PY3, NCDOT has 83 SCMs within the Falls Lake watershed and 42 SCMs within the Jordan Lake watershed. Of these SCMs, several are scheduled to undergo repairs and three are being evaluated by HSP staff for potential retrofit to improve performance.

For both road and non-road projects, NCDOT's SCM I&M Manual provides guidance to NCDOT staff that are involved in caring for SCMs. In addition, NCDOT utilizes a PCSP Poster to inform Division offices of the need to work with NCDOT's Hydraulics Unit to create a Stormwater Management Plan.

6. Plan to Offset Nutrients from Baseline to Program Implementation

Nutrient Scientific Advisory Board – NCDOT continues to participate in the Nutrient Science Advisory Board (NSAB). The NSAB functions primarily as an advisory group to assist and guide NCDEQ with effective implementation of nutrient management strategies for developed areas as they relate to the Existing Development rule. The NSAB helps the agency identify management strategies that reduce nutrient loading from existing development, evaluate management strategies, develop an accounting system, and identify improvements or refinements needed to modeling and other analytical tools.

Jordan Lake One Water – NCDOT continues to participate with Jordan Lake One Water (JLOW), which is a partnership to facilitate cooperation and integrated water resource management in the Jordan Lake watershed. The group is comprised of local governments, state government, conservation groups, universities, water utilities, agriculture, and private industry stakeholders interested in sharing the cost of water quality and quantity improvements in order to realize watershed-wide social, economic, and environmental benefits. JLOW activities are presently being coordinated with the assistance of the Central Pines Regional Council. In PY3, NCDOT continued to participate with the JLOW Rules Working Group to develop Jordan Lake nutrient management strategy rule concepts and language, in partnership with NCDEQ, to allow for JLOW activities to support compliance with future Jordan Lake rule requirements. NCDOT HSP staff also attended the JOINT 2025 Jordan Lake One Water Coalition & US Water Alliance One Water NC Delegation Meeting on February 13, 2025, which included presentations

from various JLOW and US Water Alliance representatives supporting a One Water approach to watershed protection through collaboration and effective projects. Speakers included NCDWR Director and NCDEQ Water Planning Section Chief.

GREEN Training – NCDOT continues to offer its online training video entitled ‘NCDOT JLSLAT Intro to GREEN Program,’ first introduced in 2016, to support staff and contractors when using the NCDOT nutrient accounting tool, NCDOT Jordan Lake Stormwater Nutrient Loading Accounting Tool (NCDOT-JLSLAT), on new non-road development projects. These videos are available on the NCDOT YouTube channel.

7. Nutrient Removal Retrofits (Falls Lake only)

Falls Lake – In this permit year NCDOT continues to inspect and maintain SCMs within the Falls Lake watershed. NCDOT HSP staff continue to participate with the Upper Neuse River Basin Association (UNRBA) in PY3 and to coordinate with NCDWR on the Falls Lake rules readoption.

Considerations for Term V Permit Year 4

NCDOT will continue to implement the Department’s GREEN Program and achieve requirements set forth for new and existing (Falls GREEN, only) road and non-road development in the Jordan Lake and Falls Lake watersheds. In PY4, NCDOT will enter the potential roadside stabilization sites it has identified within the Falls Lake watershed into ROSS and will coordinate with Division 5 staff for implementation of selected sites. NCDOT will continue to partner with NCDEQ on nutrient reduction strategies and to engage staff and contractors on nutrient-related requirements and watershed goals through educational tools and training opportunities.

Appendix A
I-77 Mobility Partners Stormwater
Management Program Report



Stormwater System Report

| Date of Report: | Scope of Report: | Area(s) Reported: |
|------------------------------|--|---|
| July 1, 2024 – June 30, 2025 | I-77 Mobility Partners Stormwater Management Program | I-77 Mobility Partners Facility Stormwater System & I-77 Corridor |

I Report

Section 1 – Overview/Summary

In accordance with I-77 Mobility Partners Stormwater Management Program and in compliance with the Comprehensive Agreement, I-77 Mobility Partners herein provides its annual report under NCDOT's NPDES permit. This report is for a 26-mile portion of the I-77 corridor and an approximately one-third mile portion of I-277 in the City of Charlotte, and in Mecklenburg and Iredell Counties, North Carolina. From MM 11 to MM 37 on I-77 both northbound and southbound. In addition, this report includes Administration & Maintenance building (Facility) which became operational on November 1, 2018, located at:

8015 W. WT Harris Blvd.
Charlotte, NC 28216

Section 2 - Illicit Discharge Detection and Elimination Plan (IDDEP)

No illicit discharges were detected, and no illegal dumping occurred during the report period July 1, 2024, to June 30, 2025.

IDDEP Training: I-77 team has successfully completed the IDDEP initial training. To ensure consistency and compliance, IDDEP training is reassigned on an annual basis and part of a new-hire training program.

Section 3 - Post-Construction Controls

I-77 MP has inspected all the Stormwater Controls Measures (SCMs) in the Project, as shown in the table below, and they were all working as designed and meet all requirements per the approved Stormwater Management Program (SMP) in accordance with NCDOT's NPDES permit.

| Asset ID | Control ID | Location | Results of Inspection | Maintenance Required Description |
|-----------|-------------------|---------------------|-----------------------|--|
| HSB000001 | IM-10-60-HSB-4109 | 77, NB, RS, MM,27.8 | Passed | Continue to monitor and remove vegetation, sediment, and debris as needed. |
| HSB000002 | IM-10-60-HSB-3524 | 77, NB, RS, MM,28.5 | Passed | Continue to monitor and remove vegetation, sediment, and debris as needed. |
| HSB000003 | IM-10-60-HSB-3525 | 77, SB, RS, MM,28.9 | Passed | Continue to monitor and remove vegetation, sediment, and debris as needed. |
| HSB000004 | IM-10-60-HSB-3540 | 77, NB, RS, MM,29.0 | Passed | Continue to monitor and remove vegetation, sediment, and debris as needed. |
| HSB000005 | IM-10-60-HSB-3526 | 77, SB, RS, MM,29.3 | Passed | Continue to monitor and remove vegetation, sediment, and debris as needed. |
| HSB000006 | IM-10-60-HSB-3539 | 77, NB, RS, MM,29.3 | Passed | Continue to monitor and remove vegetation, sediment, and debris as needed. |
| HSB000007 | IM-12-49-HSB-3527 | 77, NB, RS, MM,30.9 | Passed | Continue to monitor and remove vegetation, sediment, and debris as needed |
| HSB000008 | IM-12-49-HSB-3529 | 77, NB, RS, MM,31.0 | Passed | Continue to monitor and remove vegetation, sediment, and debris as needed. |

Stormwater System Report

| | | | | |
|------------|--|---------------------|--------|--|
| HSB000009 | IM-12-49-HSB-3530 | 77, NB, RS, MM,31.3 | Passed | Continue to monitor and remove vegetation, sediment, and debris as needed. |
| HSB000010 | IM-12-49-HSB-3531 | 77, SB, RS, MM,31.5 | Passed | Continue to monitor and remove vegetation, sediment, and debris as needed. |
| HSB000011 | IM-12-49-HSB-3532 | 77, NB, RS, MM,31.7 | Passed | Continue to monitor and remove vegetation, sediment, and debris as needed. |
| HSB000012 | IM-12-49-HSB-3533 | 77, NB, RS, MM,32.1 | Passed | Continue to monitor. |
| HSB000013 | IM-12-49-HSB-3534 | 77, NB, RS, MM,32.5 | Passed | Continue to monitor. |
| HSB000014 | IM-12-49-HSB-3535 | 77, NB, RS, MM,32.7 | Passed | Continue to monitor and remove vegetation, sediment, and debris as needed. |
| HSB000015 | IM-12-49-HSB-3536 | 77, NB, RS, MM,34.0 | Passed | Continue to monitor. |
| HSB000016 | IM-12-49-HSB-3537 | 77, NB, RS, MM,34.5 | Passed | Continue to monitor and remove vegetation, sediment, and debris as needed. |
| HSB000017 | IM-12-49-HSB-3538 | 77, NB, RS, MM,36.1 | Passed | Continue to monitor and remove vegetation, sediment, and debris as needed. |
| STR-00565 | <i>Stormwater Structure not an SCM</i> | 77, NB, RS, MM,16.9 | Passed | Continue to monitor as needed. |
| STR-001553 | IM-10-60-FB-2142 (forebay) | 77, NB, RS, MM,24.5 | Passed | Continue to monitor as needed. |
| STR-001558 | IM-10-60-FB-2141 (forebay) | 77, NB, RS, MM,24.5 | Passed | Continue to monitor as needed. |
| STR-001559 | IM-10-60-FB-2141 (basin) | 77, NB, RS, MM,24.5 | Passed | Continue to monitor as needed. |
| STR-001560 | IM-10-60-FB-2142 (basin) | 77, NB, RS, MM,24.5 | Passed | Continue to monitor as needed. |
| STR-001704 | IM-10-60-DDB-2563 (forebay) | 77, SB, RS, MM,25.0 | Passed | Continue to monitor as needed. |
| STR-001706 | IM-10-60-DDB-2563 (basin) | 77, SB, RS, MM,25.0 | Passed | Continue to monitor as needed. |
| RCP-000730 | IM-10-60-PSH-3334 | 77, NB, RS, MM,19.9 | Passed | Continue to monitor as needed. Access is limited. |



Stormwater System Report

Section 4– Construction Program

There are no construction activities ongoing within the Project under I-77 MP responsibility. Final Completion for the Project was achieved on August 3rd of 2021.

Section 5– Pollution Prevention and Housekeeping

I-77 Mobility Partners has developed and implemented the Stormwater Pollution Prevention Plan (SPPP) in accordance with NCDOT's NPDES permit for the Administration and Maintenance building (facility).

Reference the summary of Annual Maintenance Work Performed (see below).

Summary of Annual Maintenance Work Performed

| Element Category | Maintenance Performed | Maintenance Unit | Total Quantity between 1/01/2024 – 12/31/2024 |
|-------------------|-----------------------------------|------------------|---|
| Litter and Debris | Excessive Litter | CY | 48 |
| Litter and Debris | Debris Removal | CY | 2,277 |
| Litter and Debris | Debris Removal + Excessive Litter | Hours | 5,862 |
| Litter and Debris | Sweeping | Miles | 984 |

| II | Conclusion |
|----|---|
| | Overall, the I-77 Mobility Partners Stormwater Management Program is implemented, and it is being inspected and maintained following all procedures as established by NCDOT Manuals and Guidelines. |

| III | Point of contact person |
|-----|--|
| | Health, Safety & Environmental (HSE) point of contact person from I-77 Mobility Partners: Lyndi Boone lboone@i77partners.com 704-451-4090 |

| | | |
|--------------------------|---|-----------------|
| HSE Manager: Lyndi Boone | Signature:  | Date: 7/31/2025 |
|--------------------------|---|-----------------|

Appendix B

DMRs for NCDOT Industrial Facilities

NCDOT conducted analytical monitoring for the following industrial facilities in PY3 and copies of the completed NCDEQ Stormwater Discharge Monitoring Reports (DMRs) are provided in this Appendix B.

North Carolina Global TransPark (NCGTP)

- 1st Quarter DMR from sampling event dated 8/6/2024
- 2nd Quarter DMR with no discharge during this period, as per NCDEQ Methodology, NCG150000, Section E-3 criteria.
- 3rd Quarter DMR with no discharge during this period, as per E-3 criteria.
- 4th Quarter DMR from sampling event dated 4/30/2025

Creswell Asphalt Plant in Washington County

- 1st Quarter DMR from sampling event dated 9/25/2024
- 2nd Quarter DMR from sampling event dated 12/11/2024 (resulted in Tier I status)
- 3rd Quarter DMR with no discharge during this period, as per NCDEQ Methodology, NCG160000, Section E-3 criteria.
- 4th Quarter DMR with no discharge during this period, as per E-3 criteria.

NCDEQ Division of Energy, Mineral and Land Resources
Stormwater Discharge Monitoring Report (DMR) Form for NCG150000
Airports

[Click here for instructions](#)

Complete, sign, scan and submit the DMR via the [Stormwater NPDES Permit Data Monitoring Report \(DMR\) Upload form](#) within 30 days of receiving sampling results. Mail the original, signed hard copy of the DMR to the [appropriate DEMLR Regional Office](#). Mailed in DMRs must contain an original wet signature. Electronic signatures will not be accepted for mailed in DMRs. This is a requirement until the permittee has registered for eDMR for reporting.

| | |
|---|---|
| Certificate of Coverage No. NCG15-Permit#NCS000250 | Person Collecting Samples: D.O'Connor, J.Bacic |
| Facility Name: NCGTP | Laboratory Name: Pace Analytical Svcs, LLC |
| Facility County: Lenoir | Laboratory Cert. No.: 12 |

Discharge during this period: ☒ Yes ☐ No (if no, skip to signature and date)

Has your facility implemented mandatory Tier response actions for any benchmark exceedances? ☐ Yes ☒ No
If so, which Tier (I, II, or III)?

A copy of this DMR has been uploaded electronically via <https://edocs.deq.nc.gov/Forms/SW-DMR> ☒ Yes ☐ No

Date Uploaded: **10/10/2024**

Part A: Analytical Monitoring Requirements for Outfalls with Industrial Activities – Benchmarks in (Red)

| Parameter Code | Parameter | Outfall 003 | Outfall 004 | Outfall 006 | Outfall 007 | Outfall 008 |
|----------------|---|-------------|-------------|-------------|-------------|-------------|
| N/A | Receiving Stream Class | C, Sw, NSW | C, Sw, NSW | C, Sw, NSW | C, Sw, NSW | C, Sw, NSW |
| N/A | Date Sample Collected MM/DD/YYYY | 8/6/24 | 8/6/24 | 8/6/24 | 8/6/24 | 8/6/24 |
| 46529 | 24-Hour Rainfall in inches | 2.06 | 2.06 | 2.06 | 2.06 | 2.06 |
| 00400 | pH (Freshwater: 6-9, Saltwater: 6.8-8.5) | 6.3 | 6.4 | 6.0 | 6.2 | 6.0 |
| CO530 | TSS in mg/L (100 or 50*) | 5.80 | 8.80 | 41.7 | 24.0 | 14.0 |
| 01027 | Conductivity in µohms/cm | 127.6 | 97.4 | 93.3 | 114.4 | 65.8 |
| CO034 | Chemical Oxygen Demand (COD) in mg/L (120) | 71.3 | 37.2 | 41.0 | ND | 53.1 |
| 00552 | Non-Polar Oil & Grease in mg/L (15) for drainage areas that use >55 gal/mo of new hydraulic oil on avg. | ND | ND | ND | ND | ND |
| NCOIL | Estimated New Motor/Hydraulic Oil Usage in gal/month | 0 | 0 | 35 | 32 | 0 |

* Outfalls to Outstanding Resource Waters (ORW), High Quality Waters (HQW), Trout Waters (Tr) and Primary Nursery Areas (PNA) have a benchmark TSS limit of **50 mg/L**. All other water classifications have a benchmark of **100 mg/L**.

Notes (optional):

"I certify by my signature below, under penalty of law, that this document and all attachments were prepared under my direction or supervision in accordance with a system designed to assure that qualified personnel properly gather and evaluate the information submitted. Based on my inquiry of the person or persons who manage the system, or those persons directly responsible for gathering the information, the information submitted is, to the best of my knowledge and belief, true, accurate, and complete. I am aware that there are significant penalties for submitting false information, including the possibility of fines and imprisonment for knowing violations."



Signature of Permittee or Delegated Authorized Individual

10/10/2024

Date

NCDEQ Division of Energy, Mineral and Land Resources
Stormwater Discharge Monitoring Report (DMR) Form for NCG150000
Airports
[Click here for instructions](#)

Complete, sign, scan and submit the DMR via the [Stormwater NPDES Permit Data Monitoring Report \(DMR\) Upload form](#) within 30 days of receiving sampling results. Mail the original, signed hard copy of the DMR to the [appropriate DEMLR Regional Office](#). Mailed in DMRs must contain an original wet signature. Electronic signatures will not be accepted for mailed in DMRs. This is a requirement until the permittee has registered for eDMR for reporting.

| | |
|---|---|
| Certificate of Coverage No. NCG15-Permit#NCS000250 | Person Collecting Samples: D.O'Connor, J.Bacic |
| Facility Name: NCGRP | Laboratory Name: Pace Analytical Svcs, LLC |
| Facility County: Lenoir | Laboratory Cert. No.: 12 |

Discharge during this period: ☒ Yes ☐ No (if no, skip to signature and date)

Has your facility implemented mandatory Tier response actions for any benchmark exceedances? ☐ Yes ☒ No
If so, which Tier (I, II, or III)?

A copy of this DMR has been uploaded electronically via <https://edocs.deq.nc.gov/Forms/SW-DMR> ☒ Yes ☐ No
Date Uploaded: **10/10/2024**

Part A: Analytical Monitoring Requirements for Outfalls with Industrial Activities – Benchmarks in (Red)

| Parameter Code | Parameter | Outfall 009 | Outfall 010 | Outfall 011 | Outfall | Outfall |
|----------------|---|-------------|-------------|-------------|---------|---------|
| N/A | Receiving Stream Class | C, Sw, NSW | C, Sw, NSW | C, Sw, NSW | | |
| N/A | Date Sample Collected MM/DD/YYYY | 8/6/24 | 8/6/24 | 8/6/24 | | |
| 46529 | 24-Hour Rainfall in inches | 2.06 | 2.06 | 2.06 | | |
| 00400 | pH (Freshwater: 6-9, Saltwater: 6.8-8.5) | 6.5 | 6.0 | 6.0 | | |
| CO530 | TSS in mg/L (100 or 50*) | ND | ND | 4.13 | | |
| 01027 | Conductivity in µohms/cm | 24.6 | 42.7 | 22.7 | | |
| CO034 | Chemical Oxygen Demand (COD) in mg/L (120) | ND | ND | 36.4 | | |
| 00552 | Non-Polar Oil & Grease in mg/L (15) for drainage areas that use >55 gal/mo of new hydraulic oil on avg. | ND | ND | ND | | |
| NCOIL | Estimated New Motor/Hydraulic Oil Usage in gal/month | 0 | 1 | 0 | | |

* Outfalls to Outstanding Resource Waters (ORW), High Quality Waters (HQW), Trout Waters (Tr) and Primary Nursery Areas (PNA) have a benchmark TSS limit of **50 mg/L**. All other water classifications have a benchmark of **100 mg/L**.

Notes (optional): SDOs 001, 002, 005, 012 no discharge

"I certify by my signature below, under penalty of law, that this document and all attachments were prepared under my direction or supervision in accordance with a system designed to assure that qualified personnel properly gather and evaluate the information submitted. Based on my inquiry of the person or persons who manage the system, or those persons directly responsible for gathering the information, the information submitted is, to the best of my knowledge and belief, true, accurate, and complete. I am aware that there are significant penalties for submitting false information, including the possibility of fines and imprisonment for knowing violations."


Signature of Permittee or Delegated Authorized Individual

10/10/2024
Date

NCDEQ Division of Energy, Mineral and Land Resources

Stormwater Discharge Monitoring Report (DMR) Form for NCG150000

Airports

[Click here for instructions](#)

Complete, sign, scan and submit the DMR via the [Stormwater NPDES Permit Data Monitoring Report \(DMR\) Upload form](#) within 30 days of receiving sampling results. Mail the original, signed hard copy of the DMR to the [appropriate DEMLR Regional Office](#). Mailed in DMRs must contain an original wet signature. Electronic signatures will not be accepted for mailed in DMRs. This is a requirement until the permittee has registered for eDMR for reporting.

| | |
|---|--|
| Certificate of Coverage No. NCG15 Permit#NCS000250 Facility Name: NCGTP Facility County: Lenoir | Person Collecting Samples: Not applicable Laboratory Name: Laboratory Cert. No.: |
| Discharge during this period: <input type="checkbox"/> Yes <input checked="" type="checkbox"/> No (if no, skip to signature and date) | |
| Has your facility implemented mandatory Tier response actions for any benchmark exceedances? <input type="checkbox"/> Yes <input checked="" type="checkbox"/> No If so, which Tier (I, II, or III)? | |
| A copy of this DMR has been uploaded electronically via https://edocs.deq.nc.gov/Forms/SW-DMR <input type="checkbox"/> Yes <input checked="" type="checkbox"/> No Date Uploaded: | |

Part A: Analytical Monitoring Requirements for Outfalls with Industrial Activities – Benchmarks in (Red)

| Parameter Code | Parameter | Outfall | Outfall | Outfall | Outfall | Outfall |
|----------------|---|---------|---------|---------|---------|---------|
| N/A | Receiving Stream Class | | | | | |
| N/A | Date Sample Collected MM/DD/YYYY | | | | | |
| 46529 | 24-Hour Rainfall in inches | | | | | |
| 00400 | pH (Freshwater: 6-9, Saltwater: 6.8-8.5) | | | | | |
| CO530 | TSS in mg/L (100 or 50*) | | | | | |
| 01027 | Conductivity in µohms/cm | | | | | |
| CO034 | Chemical Oxygen Demand (COD) in mg/L (120) | | | | | |
| 00552 | Non-Polar Oil & Grease in mg/L (15) for drainage areas that use >55 gal/mo of new hydraulic oil on avg. | | | | | |
| NCOIL | Estimated New Motor/Hydraulic Oil Usage in gal/month | | | | | |

* Outfalls to Outstanding Resource Waters (ORW), High Quality Waters (HQW), Trout Waters (Tr) and Primary Nursery Areas (PNA) have a benchmark TSS limit of 50 mg/L. All other water classifications have a benchmark of 100 mg/L.

Notes (optional): SDOs 001 - 012 no discharge during this period

"I certify by my signature below, under penalty of law, that this document and all attachments were prepared under my direction or supervision in accordance with a system designed to assure that qualified personnel properly gather and evaluate the information submitted. Based on my inquiry of the person or persons who manage the system, or those persons directly responsible for gathering the information, the information submitted is, to the best of my knowledge and belief, true, accurate, and complete. I am aware that there are significant penalties for submitting false information, including the possibility of fines and imprisonment for knowing violations."



 Signature of Permittee or Delegated Authorized Individual

12/31/2024

 Date

NCDEQ Division of Energy, Mineral and Land Resources

**Stormwater Discharge Monitoring Report (DMR) Form for NCG150000
Airports**

[Click here for instructions](#)

Complete, sign, scan and submit the DMR via the [Stormwater NPDES Permit Data Monitoring Report \(DMR\) Upload form](#) within 30 days of receiving sampling results. Mail the original, signed hard copy of the DMR to the [appropriate DEMLR Regional Office](#). Mailed in DMRs must contain an original wet signature. Electronic signatures will not be accepted for mailed in DMRs. This is a requirement until the permittee has registered for eDMR for reporting.

| | |
|---|--|
| Certificate of Coverage No. NCG15 Permit #NCS000250 Facility Name: NCGTP Facility County: Lenoir | Person Collecting Samples: Not applicable Laboratory Name: Laboratory Cert. No.: |
| Discharge during this period: <input type="checkbox"/> Yes <input checked="" type="checkbox"/> No (if no, skip to signature and date) | |
| Has your facility implemented mandatory Tier response actions for any benchmark exceedances? <input type="checkbox"/> Yes <input checked="" type="checkbox"/> No If so, which Tier (I, II, or III)? | |
| A copy of this DMR has been uploaded electronically via https://edocs.deq.nc.gov/Forms/SW-DMR <input type="checkbox"/> Yes <input checked="" type="checkbox"/> No Date Uploaded: | |

Part A: Analytical Monitoring Requirements for Outfalls with Industrial Activities – Benchmarks in (Red)

| Parameter Code | Parameter | Outfall | Outfall | Outfall | Outfall | Outfall |
|----------------|---|---------|---------|---------|---------|---------|
| N/A | Receiving Stream Class | | | | | |
| N/A | Date Sample Collected MM/DD/YYYY | | | | | |
| 46529 | 24-Hour Rainfall in inches | | | | | |
| 00400 | pH (Freshwater: 6-9, Saltwater: 6.8-8.5) | | | | | |
| CO530 | TSS in mg/L (100 or 50*) | | | | | |
| 01027 | Conductivity in µohms/cm | | | | | |
| CO034 | Chemical Oxygen Demand (COD) in mg/L (120) | | | | | |
| 00552 | Non-Polar Oil & Grease in mg/L (15) for drainage areas that use >55 gal/mo of new hydraulic oil on avg. | | | | | |
| NCOIL | Estimated New Motor/Hydraulic Oil Usage in gal/month | | | | | |

* Outfalls to Outstanding Resource Waters (ORW), High Quality Waters (HQW), Trout Waters (Tr) and Primary Nursery Areas (PNA) have a benchmark TSS limit of 50 mg/L. All other water classifications have a benchmark of 100 mg/L.

Notes (optional): SDOs 001 – 012 no discharge during this period

"I certify by my signature below, under penalty of law, that this document and all attachments were prepared under my direction or supervision in accordance with a system designed to assure that qualified personnel properly gather and evaluate the information submitted. Based on my inquiry of the person or persons who manage the system, or those persons directly responsible for gathering the information, the information submitted is, to the best of my knowledge and belief, true, accurate, and complete. I am aware that there are significant penalties for submitting false information, including the possibility of fines and imprisonment for knowing violations."

Wesley A. Owens
Signature of Permittee or Delegated Authorized Individual

3/31/2025
Date

NCDEQ Division of Energy, Mineral and Land Resources

**Stormwater Discharge Monitoring Report (DMR) Form for NCG150000
Airports**

[Click here for instructions](#)

Complete, sign, scan and submit the DMR via the [Stormwater NPDES Permit Data Monitoring Report \(DMR\) Upload form](#) within 30 days of receiving sampling results. Mail the original, signed hard copy of the DMR to the [appropriate DEMRLR Regional Office](#). Mailed in DMRs must contain an original wet signature. Electronic signatures will not be accepted for mailed in DMRs. This is a requirement until the permittee has registered for eDMR for reporting.

| | |
|---|--|
| Certificate of Coverage No. NCG15 Permit#NCS000250 Facility Name: NCGTP Facility County: Lenoir | Person Collecting Samples: O'Connor, Bacic, Shreve Laboratory Name: Pace Analytical Svcs, LLC Laboratory Cert. No.: 12 |
| Discharge during this period: <input checked="" type="checkbox"/> Yes <input type="checkbox"/> No (if no, skip to signature and date) | |
| Has your facility implemented mandatory Tier response actions for any benchmark exceedances? <input type="checkbox"/> Yes <input checked="" type="checkbox"/> No If so, which Tier (I, II, or III)? | |
| A copy of this DMR has been uploaded electronically via https://edocs.deq.nc.gov/Forms/SW-DMR <input checked="" type="checkbox"/> Yes <input type="checkbox"/> No Date Uploaded: 4/30/2025 | |

Part A: Analytical Monitoring Requirements for Outfalls with Industrial Activities – Benchmarks in (Red)

| Parameter Code | Parameter | Outfall 001 | Outfall 004 | Outfall 006 | Outfall 007 | Outfall 008 |
|----------------|---|-------------|-------------|-------------|-------------|-------------|
| N/A | Receiving Stream Class | C, Sw, NSW | C, Sw, NSW | C, Sw, NSW | C, Sw, NSW | C, Sw, NSW |
| N/A | Date Sample Collected MM/DD/YYYY | 4/7/25 | 4/7/25 | 4/7/25 | 4/7/25 | 4/7/25 |
| 46529 | 24-Hour Rainfall in inches | 1.8 | 1.8 | 1.8 | 1.8 | 1.8 |
| 00400 | pH (Freshwater: 6-9, Saltwater: 6.8-8.5) | 6.1 | 6.5 | 6.0 | 6.3 | 6.1 |
| CO530 | TSS in mg/L (100 or 50*) | 7.60 | 15.4 | 3.4 | 3.16 | 60.0 |
| 01027 | Conductivity in µohms/cm | 67.8 | 88.1 | 92.2 | 94.8 | 42.4 |
| CO034 | Chemical Oxygen Demand (COD) in mg/L (120) | 50.9 | 50.0 | 23.1 | ND | 24.7 |
| 00552 | Non-Polar Oil & Grease in mg/L (15) for drainage areas that use >55 gal/mo of new hydraulic oil on avg. | ND | ND | ND | ND | ND |
| NCOIL | Estimated New Motor/Hydraulic Oil Usage in gal/month | 75 | 0 | 35 | 32 | 0 |

* Outfalls to Outstanding Resource Waters (ORW), High Quality Waters (HQW), Trout Waters (Tr) and Primary Nursery Areas (PNA) have a benchmark TSS limit of 50 mg/L. All other water classifications have a benchmark of 100 mg/L.

Notes (optional):

"I certify by my signature below, under penalty of law, that this document and all attachments were prepared under my direction or supervision in accordance with a system designed to assure that qualified personnel properly gather and evaluate the information submitted. Based on my inquiry of the person or persons who manage the system, or those persons directly responsible for gathering the information, the information submitted is, to the best of my knowledge and belief, true, accurate, and complete. I am aware that there are significant penalties for submitting false information, including the possibility of fines and imprisonment for knowing violations."

Wesley A. Owens
Signature of Permittee or Delegated Authorized Individual

5/1/2025
Date

NCDEQ Division of Energy, Mineral and Land Resources

**Stormwater Discharge Monitoring Report (DMR) Form for NCG150000
Airports**

[Click here for instructions](#)

Complete, sign, scan and submit the DMR via the [Stormwater NPDES Permit Data Monitoring Report \(DMR\) Upload form](#) within 30 days of receiving sampling results. Mail the original, signed hard copy of the DMR to the [appropriate DEMLR Regional Office](#). Mailed in DMRs must contain an original wet signature. Electronic signatures will not be accepted for mailed in DMRs. This is a requirement until the permittee has registered for eDMR for reporting.

| | |
|---|--|
| Certificate of Coverage No. NCG15 Permit #NCS000250 Facility Name: NCGTP Facility County: Lenoir | Person Collecting Samples: O'Connor, Bacic, Shreve Laboratory Name: Pace Analytical Svcs, LLC Laboratory Cert. No.: 12 |
| Discharge during this period: <input checked="" type="checkbox"/> Yes <input type="checkbox"/> No (if no, skip to signature and date) | |
| Has your facility implemented mandatory Tier response actions for any benchmark exceedances? <input type="checkbox"/> Yes <input checked="" type="checkbox"/> No If so, which Tier (I, II, or III)? | |
| A copy of this DMR has been uploaded electronically via https://edocs.deq.nc.gov/Forms/SW-DMR <input checked="" type="checkbox"/> Yes <input type="checkbox"/> No Date Uploaded: 4/30/2025 | |

Part A: Analytical Monitoring Requirements for Outfalls with Industrial Activities – Benchmarks in (Red)

| Parameter Code | Parameter | Outfall 009 | Outfall 010 | Outfall | Outfall | Outfall |
|----------------|---|-------------|-------------|---------|---------|---------|
| N/A | Receiving Stream Class | C, Sw, NSW | C, Sw, NSW | | | |
| N/A | Date Sample Collected MM/DD/YYYY | 4/7/25 | 4/7/25 | | | |
| 46529 | 24-Hour Rainfall in inches | 1.8 | 1.8 | | | |
| 00400 | pH (Freshwater: 6-9, Saltwater: 6.8-8.5) | 6.4 | 6.2 | | | |
| CO530 | TSS in mg/L (100 or 50*) | 32.0 | 4.10 | | | |
| 01027 | Conductivity in µohms/cm | 32.4 | 56.2 | | | |
| CO034 | Chemical Oxygen Demand (COD) in mg/L (120) | 113 | ND | | | |
| 00552 | Non-Polar Oil & Grease in mg/L (15) for drainage areas that use >55 gal/mo of new hydraulic oil on avg. | ND | ND | | | |
| NCOIL | Estimated New Motor/Hydraulic Oil Usage in gal/month | 0 | 1 | | | |

* Outfalls to Outstanding Resource Waters (ORW), High Quality Waters (HQW), Trout Waters (Tr) and Primary Nursery Areas (PNA) have a benchmark TSS limit of 50 mg/L. All other water classifications have a benchmark of 100 mg/L.

Notes (optional): SDOs 002,003,005,011,012 no discharge

"I certify by my signature below, under penalty of law, that this document and all attachments were prepared under my direction or supervision in accordance with a system designed to assure that qualified personnel properly gather and evaluate the information submitted. Based on my inquiry of the person or persons who manage the system, or those persons directly responsible for gathering the information, the information submitted is, to the best of my knowledge and belief, true, accurate, and complete. I am aware that there are significant penalties for submitting false information, including the possibility of fines and imprisonment for knowing violations."

Wesley A. Owens
Signature of Permittee or Delegated Authorized Individual

5/1/2025
Date

NCDEQ Division of Energy, Mineral and Land Resources

Stormwater Discharge Monitoring Report (DMR) Form for NCG160000
Asphalt Paving Mixtures and Blocks

[Click here for instructions](#)

Complete, sign, scan and submit the DMR via the [Stormwater NPDES Permit Data Monitoring Report \(DMR\) Upload form](#) within 30 days of receiving sampling results. Mail the original, signed hard copy of the DMR to the [appropriate DEMLR Regional Office](#).

| | |
|--|--|
| Certificate of Coverage No. NCG16 Permit #NCS000250 | Person Collecting Samples: B. Harrison |
| Facility Name: Creswell Asphalt Plant | Laboratory Name: Envirochem |
| Facility County: Washington | Laboratory Cert. No.: 94 |
| Discharge during this period: <input checked="" type="checkbox"/> Yes <input type="checkbox"/> No (if no, skip to signature and date) | |
| Has your facility implemented mandatory Tier response actions <u>this sample period</u> for any benchmark exceedances? <input type="checkbox"/> Yes <input checked="" type="checkbox"/> No If so, which Tier (I, II, or III)? | |
| A copy of this DMR has been uploaded electronically via https://edocs.deq.nc.gov/Forms/SW-DMR <input checked="" type="checkbox"/> Yes <input type="checkbox"/> No | |
| Date Uploaded: 11/14/2024 | |

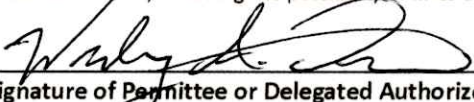
Analytical Monitoring Requirements for Outfalls with Industrial Activities – Benchmarks in (Red)

| Parameter Code | Parameter | Outfall 001 | Outfall | Outfall | Outfall | Outfall |
|---|--|-------------|---------|---------|---------|---------|
| N/A | Receiving Stream Class | C, Sw | | | | |
| N/A | Date Sample Collected MM/DD/YYYY | 9/25/24 | | | | |
| 46529 | 24-Hour Rainfall in inches | 0.25 | | | | |
| CO530 | TSS in mg/L (100 or 50*) | 30.3 | | | | |
| Additional parameters for outfalls in drainage areas that use >55 gallons per month of new hydraulic oil on average | | | | | | |
| 00552 | Non-Polar Oil & Grease in mg/L (15) | <5.00 | | | | |
| NCOIL | Estimated New Motor/Hydraulic Oil Usage in gal/month | 77 | | | | |

* Outfalls to Outstanding Resource Waters (ORW), High Quality Waters (HQW), Trout Waters (Tr) and Primary Nursery Areas (PNA) have a benchmark TSS limit of 50 mg/L. All other water classifications have a benchmark of 100 mg/L

Notes (optional): SDO 002 no discharge

"I certify by my signature below, under penalty of law, that this document and all attachments were prepared under my direction or supervision in accordance with a system designed to assure that qualified personnel properly gather and evaluate the information submitted. Based on my inquiry of the person or persons who manage the system, or those persons directly responsible for gathering the information, the information submitted is, to the best of my knowledge and belief, true, accurate, and complete. I am aware that there are significant penalties for submitting false information, including the possibility of fines and imprisonment for knowing violations."


Signature of Permittee or Delegated Authorized Individual

11/14/2024

Date

Email Address waowens1@ncdot.gov

Phone Number 919-707-2924

NCDEQ Division of Energy, Mineral and Land Resources

**Stormwater Discharge Monitoring Report (DMR) Form for NCG160000
Asphalt Paving Mixtures and Blocks**

[Click here for instructions](#)

Complete, sign, scan and submit the DMR via the [Stormwater NPDES Permit Data Monitoring Report \(DMR\) Upload form](#) within 30 days of receiving sampling results. Mail the original, signed hard copy of the DMR to the [appropriate DEMLR Regional Office](#).

| | |
|--|---------------------------------------|
| Certificate of Coverage No. NCG16 Permit #NCS000250 | Person Collecting Samples: J. Edwards |
| Facility Name: Creswell Asphalt Plant | Laboratory Name: Envirochem |
| Facility County: Washington | Laboratory Cert. No.: 94 |
| Discharge during this period: <input checked="" type="checkbox"/> Yes <input type="checkbox"/> No (if no, skip to signature and date) | |
| Has your facility implemented mandatory Tier response actions <u>this sample period</u> for any benchmark exceedances? <input type="checkbox"/> Yes <input checked="" type="checkbox"/> No If so, which Tier (I, II, or III)? | |
| A copy of this DMR has been uploaded electronically via https://edocs.deq.nc.gov/Forms/SW-DMR <input type="checkbox"/> Yes <input checked="" type="checkbox"/> No | |
| Date Uploaded: | |

Analytical Monitoring Requirements for Outfalls with Industrial Activities – Benchmarks in (Red)

| Parameter Code | Parameter | Outfall 001 | Outfall 002 | Outfall | Outfall | Outfall |
|---|--|-------------|-------------|---------|---------|---------|
| N/A | Receiving Stream Class | C, Sw | C, Sw | | | |
| N/A | Date Sample Collected MM/DD/YYYY | 12/11/24 | 12/11/24 | | | |
| 46529 | 24-Hour Rainfall in inches | 1.21 | 1.21 | | | |
| CO530 | TSS in mg/L (100 or 50*) | 135 | 282 | | | |
| Additional parameters for outfalls in drainage areas that use >55 gallons per month of new hydraulic oil on average | | | | | | |
| 00552 | Non-Polar Oil & Grease in mg/L (15) | <5.00 | <5.00 | | | |
| NCOIL | Estimated New Motor/Hydraulic Oil Usage in gal/month | 77 | 77 | | | |

* Outfalls to Outstanding Resource Waters (ORW), High Quality Waters (HQW), Trout Waters (Tr) and Primary Nursery Areas (PNA) have a benchmark TSS limit of 50 mg/L. All other water classifications have a benchmark of 100 mg/L

Notes (optional):

"I certify by my signature below, under penalty of law, that this document and all attachments were prepared under my direction or supervision in accordance with a system designed to assure that qualified personnel properly gather and evaluate the information submitted. Based on my inquiry of the person or persons who manage the system, or those persons directly responsible for gathering the information, the information submitted is, to the best of my knowledge and belief, true, accurate, and complete. I am aware that there are significant penalties for submitting false information, including the possibility of fines and imprisonment for knowing violations."

Wesley A. Owens
Signature of Permittee or Delegated Authorized Individual

1/21/2025
Date

Email Address waowens1@ncdot.gov

Phone Number 919-707-2924

NCDEQ Division of Energy, Mineral and Land Resources

**Stormwater Discharge Monitoring Report (DMR) Form for NCG160000
Asphalt Paving Mixtures and Blocks**

[Click here for instructions](#)

Complete, sign, scan and submit the DMR via the [Stormwater NPDES Permit Data Monitoring Report \(DMR\) Upload form](#) within 30 days of receiving sampling results. Mail the original, signed hard copy of the DMR to the [appropriate DEMLR Regional Office](#).

| | |
|---|--|
| Certificate of Coverage No. NCG16 Permit #NCS000250 | Person Collecting Samples: B. Harrison |
| Facility Name: Creswell Asphalt Plant | Laboratory Name: |
| Facility County: Washington | Laboratory Cert. No.: |
| Discharge during this period: <input type="checkbox"/> Yes <input checked="" type="checkbox"/> No (if no, skip to signature and date) | |
| Has your facility implemented mandatory Tier response actions <u>this sample period</u> for any benchmark exceedances? <input checked="" type="checkbox"/> Yes <input type="checkbox"/> No | |
| If so, which Tier (I, II, or III)? Tier I | |
| A copy of this DMR has been uploaded electronically via https://edocs.deq.nc.gov/Forms/SW-DMR <input type="checkbox"/> Yes <input checked="" type="checkbox"/> No | |
| Date Uploaded: | |

Analytical Monitoring Requirements for Outfalls with Industrial Activities – Benchmarks in (Red)

| Parameter Code | Parameter | Outfall 001 | Outfall 002 | Outfall | Outfall | Outfall |
|---|--|-------------|-------------|---------|---------|---------|
| N/A | Receiving Stream Class | | | | | |
| N/A | Date Sample Collected MM/DD/YYYY | | | | | |
| 46529 | 24-Hour Rainfall in inches | | | | | |
| CO530 | TSS in mg/L (100 or 50*) | | | | | |
| Additional parameters for outfalls in drainage areas that use >55 gallons per month of new hydraulic oil on average | | | | | | |
| 00552 | Non-Polar Oil & Grease in mg/L (15) | | | | | |
| NCOIL | Estimated New Motor/Hydraulic Oil Usage in gal/month | | | | | |

* Outfalls to Outstanding Resource Waters (ORW), High Quality Waters (HQW), Trout Waters (Tr) and Primary Nursery Areas (PNA) have a benchmark TSS limit of 50 mg/L. All other water classifications have a benchmark of 100 mg/L

Notes (optional): SDOs 001 & 002 no discharge during this period

"I certify by my signature below, under penalty of law, that this document and all attachments were prepared under my direction or supervision in accordance with a system designed to assure that qualified personnel properly gather and evaluate the information submitted. Based on my inquiry of the person or persons who manage the system, or those persons directly responsible for gathering the information, the information submitted is, to the best of my knowledge and belief, true, accurate, and complete. I am aware that there are significant penalties for submitting false information, including the possibility of fines and imprisonment for knowing violations."

Wesley A. Owens
Signature of Permittee or Delegated Authorized Individual

3/31/2025
Date

Email Address waowens1@ncdot.gov

Phone Number 919-707-2924

NCDEQ Division of Energy, Mineral and Land Resources

**Stormwater Discharge Monitoring Report (DMR) Form for NCG160000
Asphalt Paving Mixtures and Blocks**

[Click here for instructions](#)

Complete, sign, scan and submit the DMR via the [Stormwater NPDES Permit Data Monitoring Report \(DMR\) Upload form](#) within 30 days of receiving sampling results. Mail the original, signed hard copy of the DMR to the [appropriate DEMLR Regional Office](#).

| | |
|---|--|
| Certificate of Coverage No. NCG16 Permit #NCS000250 | Person Collecting Samples: B. Harrison |
| Facility Name: Creswell Asphalt Plant | Laboratory Name: |
| Facility County: Washington | Laboratory Cert. No.: |
| Discharge during this period: <input type="checkbox"/> Yes <input checked="" type="checkbox"/> No (if no, skip to signature and date) | |
| Has your facility implemented mandatory Tier response actions <u>this sample period</u> for any benchmark exceedances? <input checked="" type="checkbox"/> Yes <input type="checkbox"/> No | |
| If so, which Tier (I, II, or III)? Tier I | |
| A copy of this DMR has been uploaded electronically via https://edocs.deq.nc.gov/Forms/SW-DMR <input type="checkbox"/> Yes <input checked="" type="checkbox"/> No | |
| Date Uploaded: | |

Analytical Monitoring Requirements for Outfalls with Industrial Activities – Benchmarks in (Red)

| Parameter Code | Parameter | Outfall 001 | Outfall 002 | Outfall | Outfall | Outfall |
|---|--|-------------|-------------|---------|---------|---------|
| N/A | Receiving Stream Class | | | | | |
| N/A | Date Sample Collected MM/DD/YYYY | | | | | |
| 46529 | 24-Hour Rainfall in inches | | | | | |
| CO530 | TSS in mg/L (100 or 50*) | | | | | |
| Additional parameters for outfalls in drainage areas that use >55 gallons per month of new hydraulic oil on average | | | | | | |
| 00552 | Non-Polar Oil & Grease in mg/L (15) | | | | | |
| NCOIL | Estimated New Motor/Hydraulic Oil Usage in gal/month | | | | | |

* Outfalls to Outstanding Resource Waters (ORW), High Quality Waters (HQW), Trout Waters (Tr) and Primary Nursery Areas (PNA) have a benchmark TSS limit of 50 mg/L. All other water classifications have a benchmark of 100 mg/L

Notes (optional): SDOs 001 & 002 no discharge during this period

"I certify by my signature below, under penalty of law, that this document and all attachments were prepared under my direction or supervision in accordance with a system designed to assure that qualified personnel properly gather and evaluate the information submitted. Based on my inquiry of the person or persons who manage the system, or those persons directly responsible for gathering the information, the information submitted is, to the best of my knowledge and belief, true, accurate, and complete. I am aware that there are significant penalties for submitting false information, including the possibility of fines and imprisonment for knowing violations."

Wesley A. Owens
Signature of Permittee or Delegated Authorized Individual

6/30/2025
Date

Email Address waowens1@ncdot.gov

Phone Number 919-707-2924