

Alamance County



<u>Reported Crashes</u>	2003		2004		2005		2006		2007		5 Year Average	
	Crashes	Injuries	Crashes	Injuries	Crashes	Injuries	Crashes	Injuries	Crashes	Injuries	Crashes	Injuries
Fatal	19	20	22	23	28	28	16	17	13	16	20	21
Non Fatal Injury	1,238	1,943	1,225	1,946	1,221	1,957	1,264	2,000	1,233	1,980	1,236	1,965
PDO	2,532	--	2,399	--	2,525	--	2,449	--	2,450	--	2,471	--
Total	3,789	1,963	3,646	1,969	3,774	1,985	3,729	2,017	3,696	1,996	3,727	1,986
<u>Alcohol Related Crashes</u>												
Fatal	8	8	9	9	6	6	5	6	5	5	7	7
Non Fatal Injury	87	140	118	194	103	172	84	120	94	147	97	155
PDO	81	--	85	--	94	--	97	--	84	--	88	--
Total	176	148	212	203	203	178	186	126	183	152	192	161
<u>Percent Alcohol Related</u>												
Fatal	42.1%	40.0%	40.9%	39.1%	21.4%	21.4%	31.3%	35.3%	38.5%	31.3%	33.7%	32.7%
Non Fatal Injury	7.0%	7.2%	9.6%	10.0%	8.4%	8.8%	6.6%	6.0%	7.6%	7.4%	7.9%	7.9%
PDO	3.2%	--	3.5%	--	3.7%	--	4.0%	--	3.4%	--	3.6%	--
Total	4.6%	7.5%	5.8%	10.3%	5.4%	9.0%	5.0%	6.2%	5.0%	7.6%	5.2%	8.1%
<u>Crash Types*</u>												
<u>Frontal Impact</u>												
Fatal	6	6	6	7	7	7	4	5	2	2	5	5
Non Fatal Injury	404	717	434	790	429	760	452	769	390	705	422	748
PDO	742	--	687	--	739	--	677	--	655	--	700	--
Total	1,152	723	1,127	797	1,175	767	1,133	774	1,047	707	1,127	754
<u>Lane Departure</u>												
Fatal	11	12	9	9	17	17	10	10	9	12	11	12
Non Fatal Injury	356	515	329	458	325	474	318	450	372	512	340	482
PDO	559	--	510	--	522	--	450	--	496	--	507	--
Total	926	527	848	467	864	491	778	460	877	524	859	494
<u>Rear End</u>												
Fatal	0	0	1	1	0	0	1	1	0	0	0	0
Non Fatal Injury	354	533	346	531	349	524	363	616	331	556	349	552
PDO	557	--	536	--	578	--	560	--	517	--	550	--
Total	911	533	883	532	927	524	924	617	848	556	899	552
<u>Other Crash Types</u>												
Fatal	2	2	6	6	4	4	1	1	2	2	3	3
Non Fatal Injury	124	178	116	167	118	199	131	165	140	207	126	183
PDO	674	--	666	--	686	--	762	--	782	--	714	--
Total	800	180	788	173	808	203	894	166	924	209	843	186
<u>Pedestrian Crashes</u>												
Fatal	2	2	2	2	2	2	0	0	2	5	2	2
Non Fatal Injury	14	15	17	23	19	25	26	27	21	31	19	24
PDO	0	--	0	--	1	--	1	--	0	--	0	--
Total	16	17	19	25	22	27	27	27	23	36	21	26
<u>Bicycle Crashes</u>												
Fatal	0	0	3	3	0	0	0	0	0	0	1	1
Non Fatal Injury	1	1	8	8	5	6	7	7	11	11	6	7
PDO	0	--	0	--	0	--	1	--	0	--	0	--
Total	1	1	11	11	5	6	8	7	11	11	7	7
<u>Motorcycle Crashes</u>												
Fatal	0	0	0	0	4	4	0	0	1	1	1	1
Non Fatal Injury	24	29	27	31	32	35	51	61	41	46	35	40
PDO	7	--	8	--	4	--	10	--	9	--	8	--
Total	31	29	35	31	40	39	61	61	51	47	44	41
<u>Truck Crashes</u>												
Fatal	1	1	1	1	2	2	4	4	1	1	2	2
Non Fatal Injury	22	32	33	44	37	79	39	59	39	59	34	55
PDO	78	--	93	--	94	--	93	--	116	--	95	--
Total	101	33	127	45	133	81	136	63	156	60	131	56
<u>Demographics</u>												
	2003		2004		2005		2006		2007		5 Year Average	
Population	136,372		137,126		138,572		139,601		143,154		138,965	
Registered Vehicles	129,894		131,696		138,444		134,394		137,633		134,412	
Estimated VMT (/100 MVMT)	14.32		14.80		15.22		15.39		15.81		15.11	
Roadway Mileage	938.08		939.91		941.43		943.76		942.91		941.2	
<u>Crash Rates</u>												
Total Crash Rate (/100 MVMT)	264.58		246.43		247.98		242.23		233.81		247.01	
Fatal Crash Rate (/100 MVMT)	1.33		1.49		1.84		1.04		0.82		1.30	
Injury Crash Rate (/100 MVMT)	87.78		84.29		82.07		83.15		78.82		83.22	

* Crash types are defined as follows:

Frontal Impact: Left turn, same roadway; Left turn, different roadways; Right turn, same roadway; Right turn, different roadways; Angle

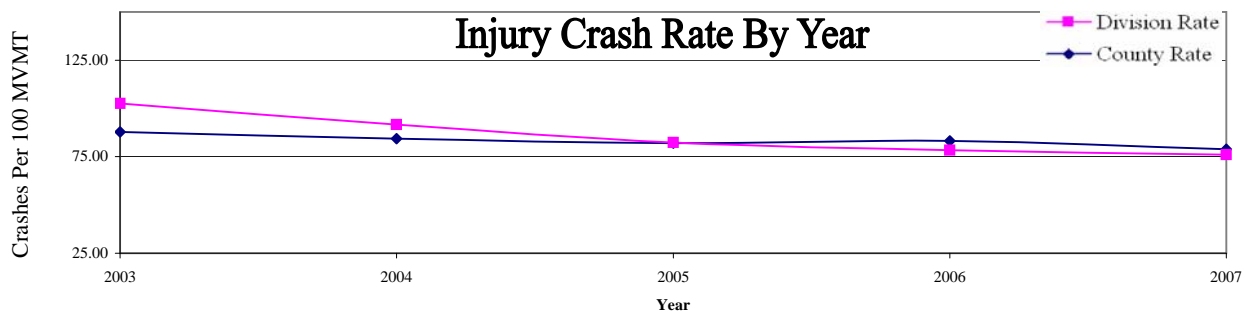
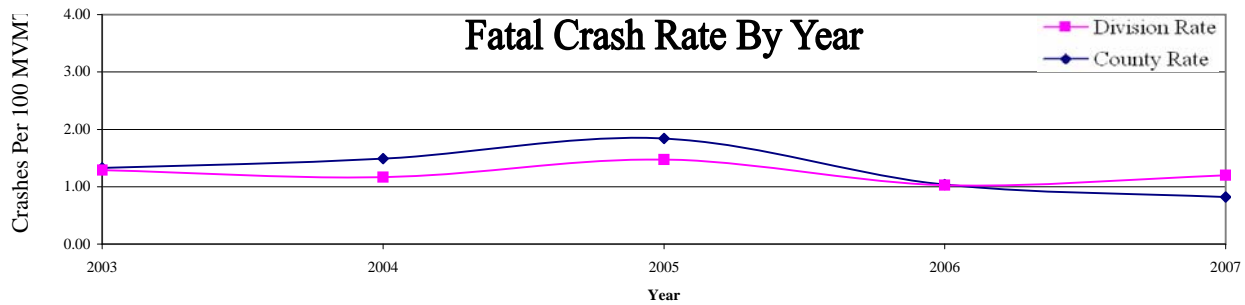
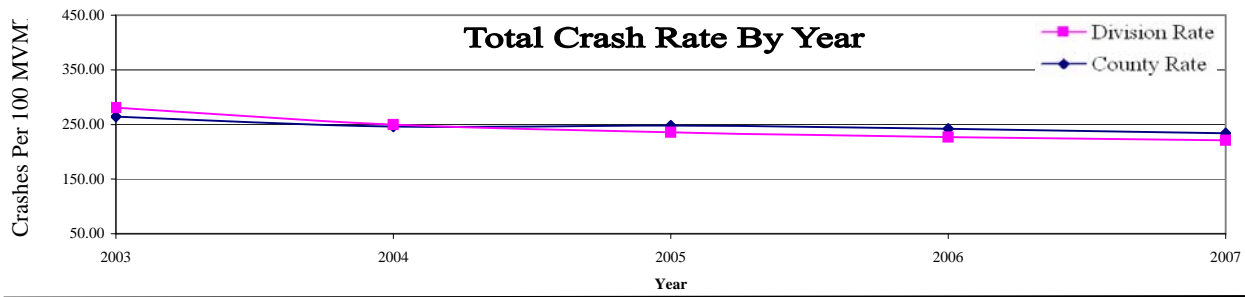
Lane Departure: Ran off road - right; Ran off road - left; Ran off road - straight; Overturn/rollover; Fixed object; Head on; Sideswipe, opposite direction

Rear end: Rear end, slow or stop; Rear end, turn

Other: All other crash types not listed above

** This listing contains all reported crashes not occurring in public vehicular areas (pva's) or private property (pp)

Alamance County



Crash Type Breakdown By Year

