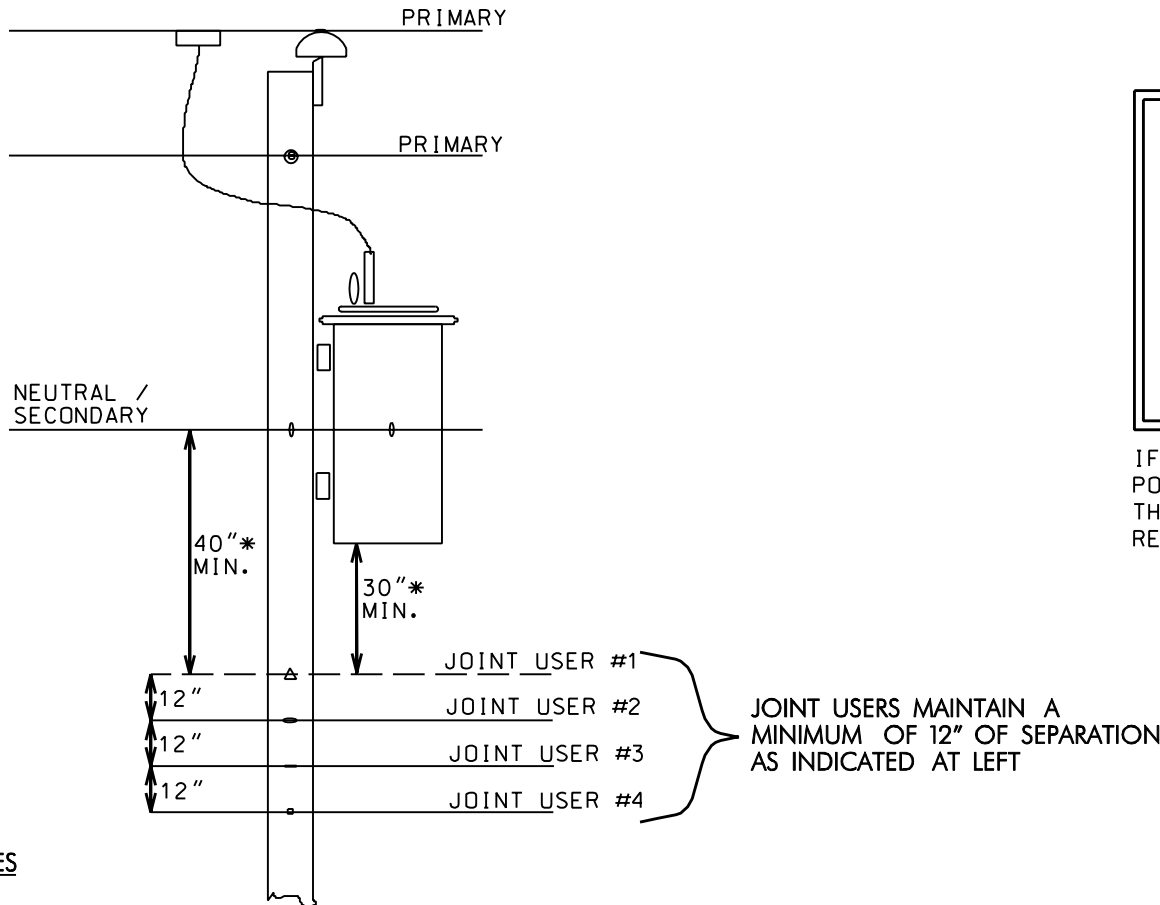


MINIMUM UTILITY CLEARANCE REQUIREMENTS



NCDOT MINIMUM ATTACHMENT CLEARANCES FROM OTHER JOINT USERS AT THE POLE

CLEARANCE FROM	MIN. DISTANCE
NEUTRAL / SECONDARY	40"
POWER SERVICE DROP	40"
POWER SERVICE DRIP LOOP ¹	40"
TOP OF POWER RISER	40"
BOTTOM OF TRANSFORMER	30"
GUY ATTACHMENT	12"

IF THE POWER SERVICE DRIP LOOP SUPPLIES POWER TO AN EFFECTIVELY GROUNDED STREETLIGHT THE MINIMUM CLEARANCE REQUIREMENT IS REDUCED TO 12"

NOTES

THE ATTACHMENT POINT FOR JOINT USER #1 MUST MAINTAIN A MINIMUM OF 40" BELOW POWER AND/OR A MINIMUM OF 30" BELOW BOTTOM OF TRANSFORMER (WHICHEVER IS GREATER)

"JOINT USER" REFERS TO THE POWER COMPANY, CATV COMPANIES, NCDOT, PHONE COMPANY, CITIES, AND OTHERS

JOINT USERS MAINTAIN A MINIMUM OF 12" OF SEPARATION AS INDICATED AT LEFT

NESC Clearance Requirements – Utilities

TRAFFIC MANAGEMENT SYSTEMS SECTION
 TRAFFIC ENGINEERING AND SAFETY SYSTEMS BRANCH
 NORTH CAROLINA DEPARTMENT OF TRANSPORTATION

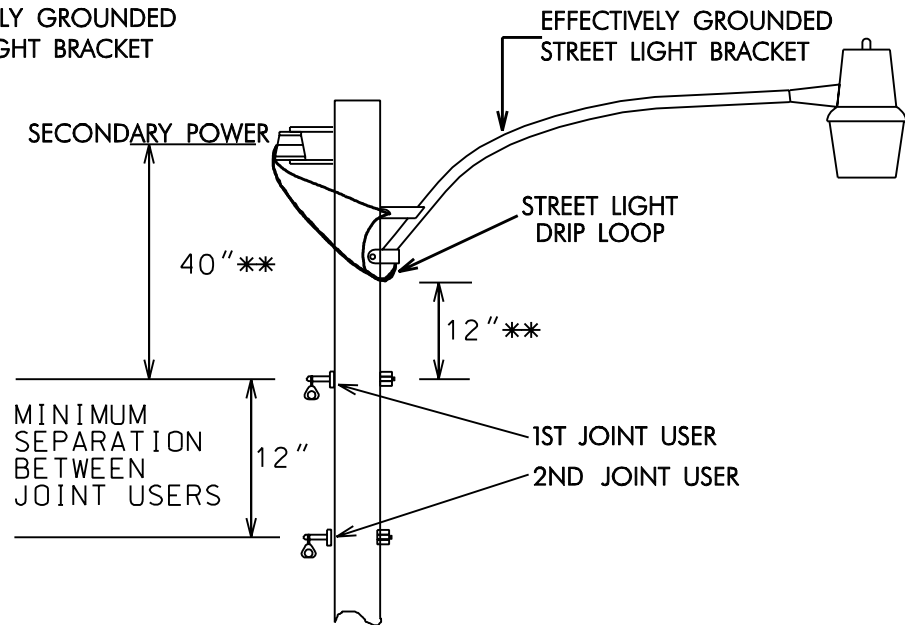
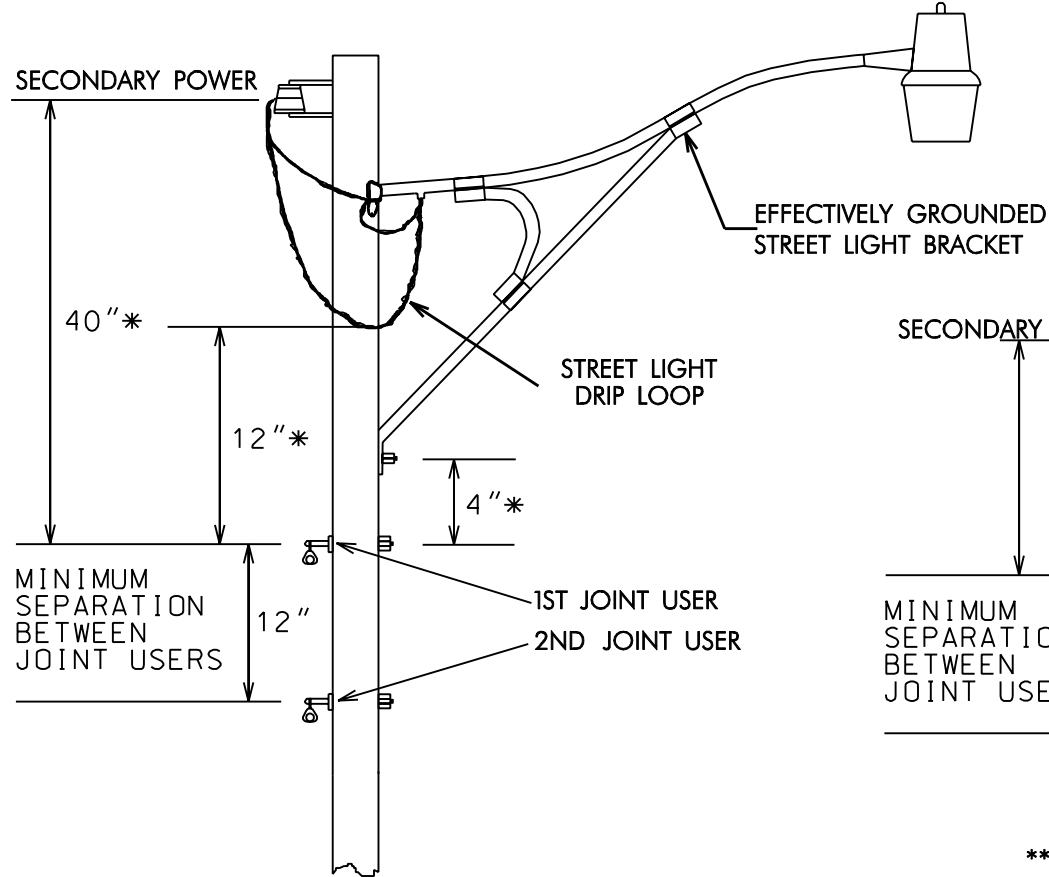
STD. NO.

1.0

SHEET 1 OF 4

7-04

STREET LIGHT CLEARANCES



* ALL THREE OF THESE MINIMUM CLEARANCE REQUIREMENTS FOR EFFECTIVELY GROUNDED STREET LIGHTS MUST BE MET

"JOINT USER" REFERS TO THE POWER COMPANY
CATV COMPANIES, NCDOT, PHONE COMPANY,
CITIES, AND OTHERS

**BOTH OF THESE MINIMUM CLEARANCE REQUIREMENTS FOR EFFECTIVELY GROUNDED STREET LIGHTS MUST BE MET

IF THE STREET LIGHT /STREET LIGHT BRACKET IS NOT EFFECTIVELY GROUNDED, THEN THE MINIMUM CLEARANCE REQUIREMENT IS INCREASED TO 40" BELOW DRIP LOOP

NEC Clearance Requirements – Streetlights

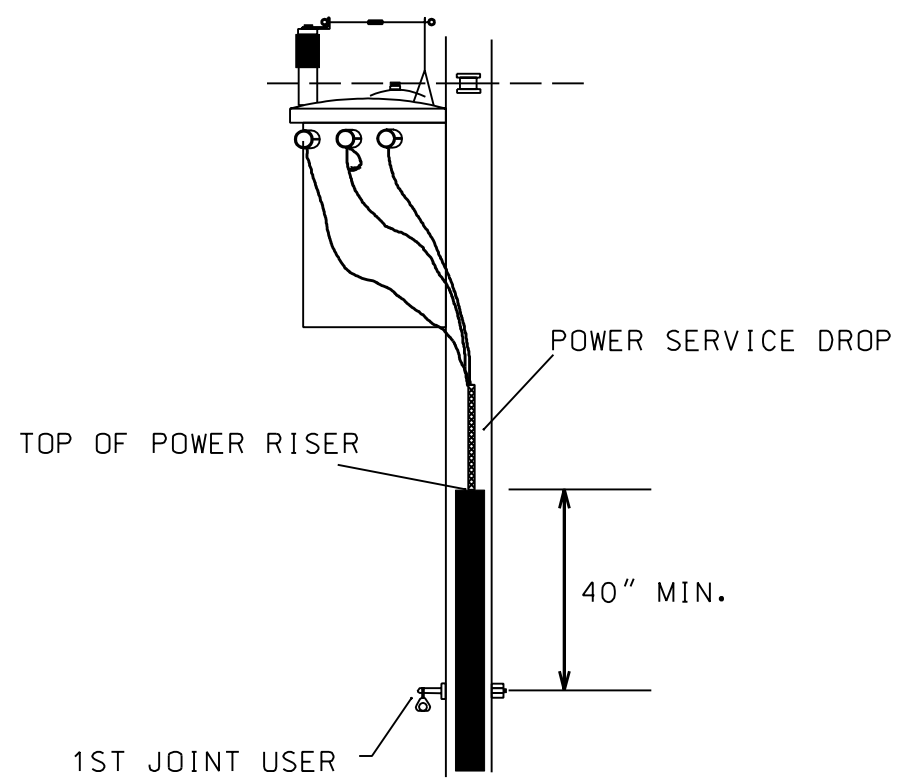
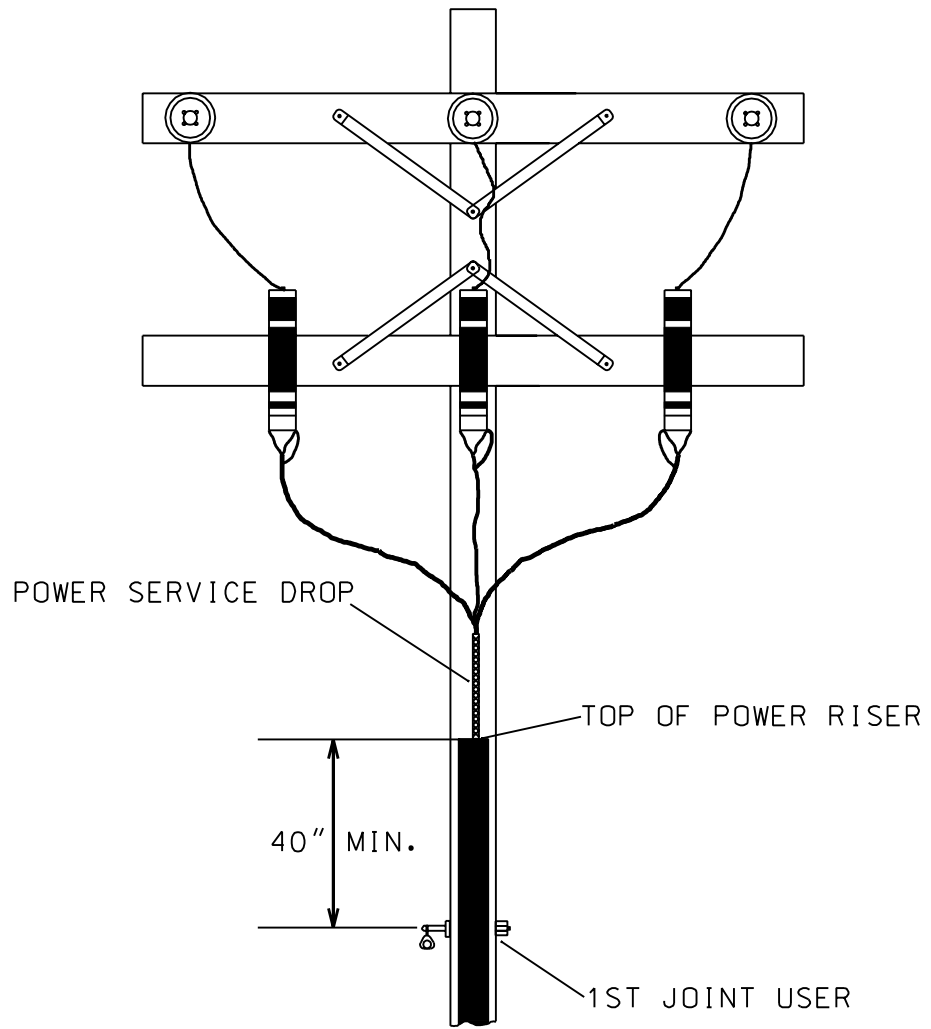
TRAFFIC MANAGEMENT SYSTEMS SECTION
TRAFFIC ENGINEERING AND SAFETY SYSTEMS BRANCH
NORTH CAROLINA DEPARTMENT OF TRANSPORTATION

7-04

STD. NO.

1.0

SHEET 2 OF 4



"JOINT USER" REFERS TO THE POWER COMPANY
 CATV COMPANIES, NCDOT, PHONE COMPANY,
 CITIES, AND OTHERS

NESC Clearance Requirements – Power Risers
 TRAFFIC MANAGEMENT SYSTEMS SECTION
 TRAFFIC ENGINEERING AND SAFETY SYSTEMS BRANCH
 NORTH CAROLINA DEPARTMENT OF TRANSPORTATION

7-04

STD. NO.
1.0
SHEET 3 OF 4

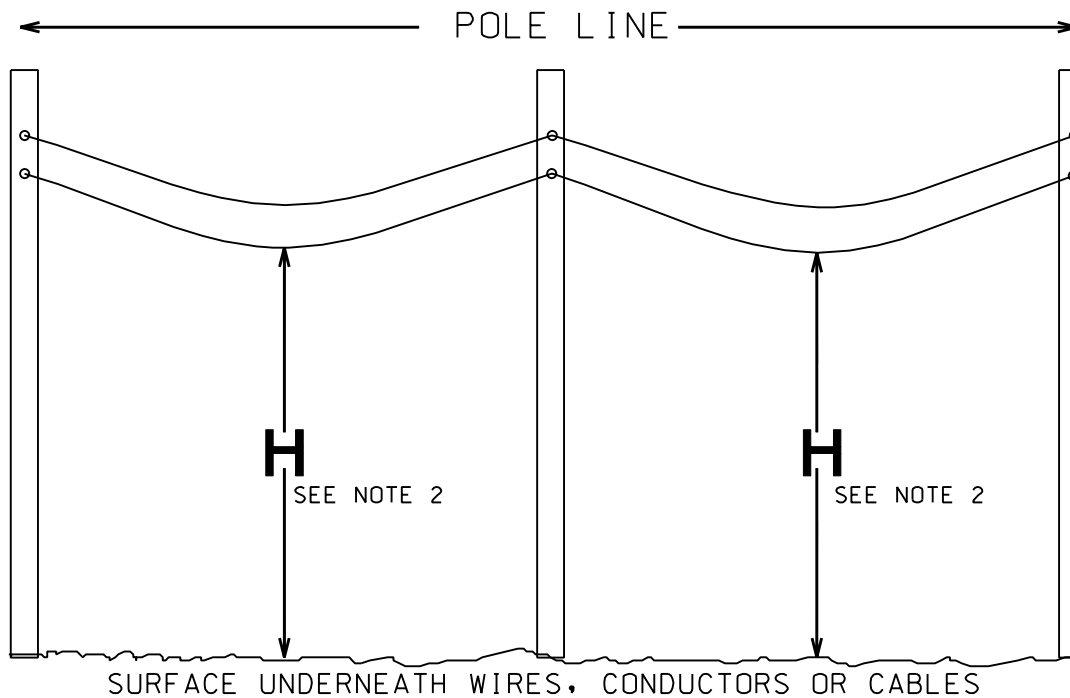


TABLE 1

NATURE OF SURFACE UNDERNEATH WIRES, CONDUCTORS OR CABLES	MINIMUM CLEARANCE (H)*
1. TRACK RAILS OF RAILROADS EXCEPT ELECTRIFIED RAILROADS USING OVERHEAD TROLLEY CONDUCTORS	30 FT
2. ROADS, STREETS AND OTHER AREAS SUBJECT TO TRUCK TRAFFIC	18 FT
3. DRIVEWAYS, PARKING LOTS, AND ALLEYS	18 FT
4. OTHER LAND TRAVERSED BY VEHICLES SUCH AS CULTIVATED, GRAZING, FOREST ORCHARDS, ETC.	18 FT
5. SPACES AND TRAVEL WAYS SUBJECT TO PEDESTRIAN OR RESTRICTED TRAFFIC ONLY	15.5 FT

* THESE VALUES HAVE BEEN ADOPTED BY NCDOT (AS WELL AS VARIOUS UTILITY COMPANIES) AND EXCEED THE SPECIFICATIONS AS SET FORTH IN THE NATIONAL ELECTRICAL SAFETY CODE (NESC).

NOTES:

1. SEE TABLE 1 FOR ACCEPTABLE MINIMUM CLEARANCE VALUES (H) OVER VARYING SURFACES
2. "H" IS DEFINED AS THE VERTICAL DISTANCE (HEIGHT) AS MEASURED FROM THE LOWEST POINT (TYPICALLY MIDSPAN) OF THE WIRES, CONDUCTORS OR CABLES TO THE SURFACE BELOW
3. SAG BETWEEN POLES SHOULD MATCH THE SAG OF EXISTING UTILITY LINES

NESC Clearance Requirements – Height Over Grade

TRAFFIC MANAGEMENT SYSTEMS SECTION
 TRAFFIC ENGINEERING AND SAFETY SYSTEMS BRANCH
 NORTH CAROLINA DEPARTMENT OF TRANSPORTATION

STD. NO.

1.0

SHEET 4 OF 4

7-04