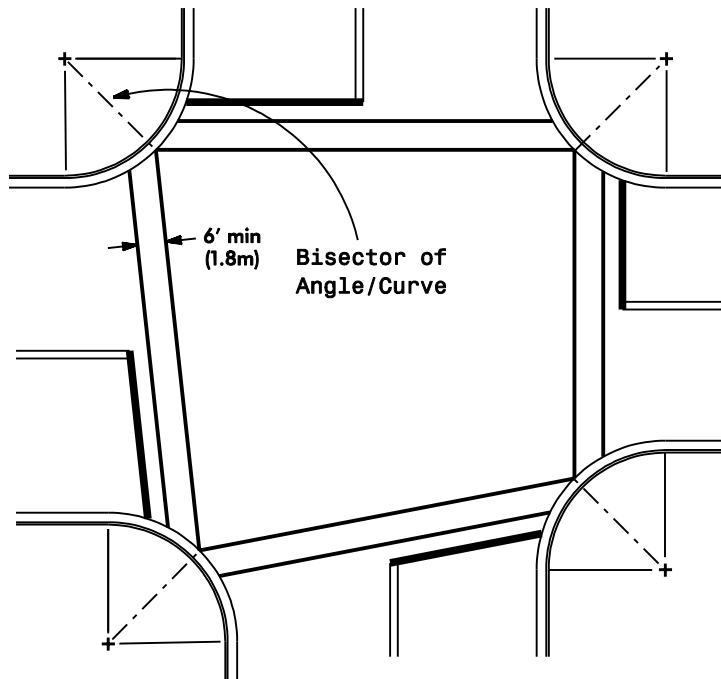


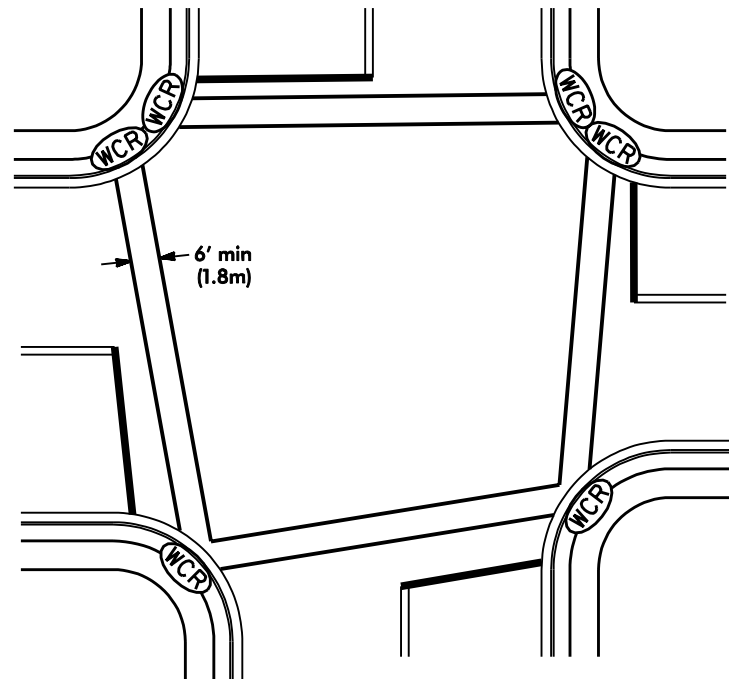
CASE 1

Locate Crosswalks from Center of Curve



CASE 2

Connect Wheelchair Ramps



Reference: Roadway Standard Drawing 1205.07

Crosswalks

SIGNALS & GEOMETRICS SECTION
TRAFFIC ENGINEERING AND SAFETY SYSTEMS BRANCH
NORTH CAROLINA DEPARTMENT OF TRANSPORTATION

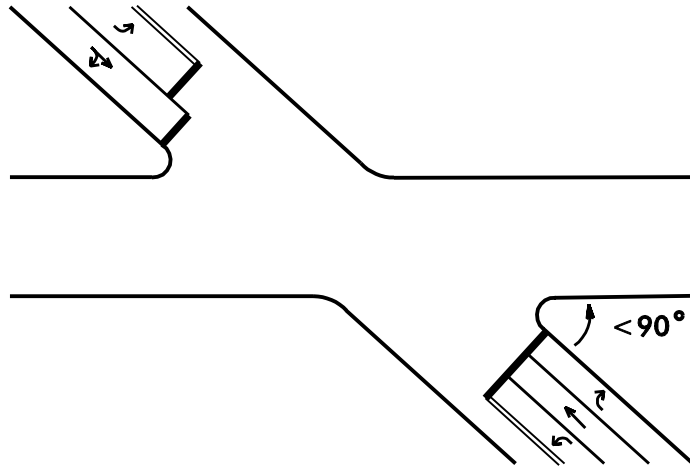
7-04

STD. NO.

9.0

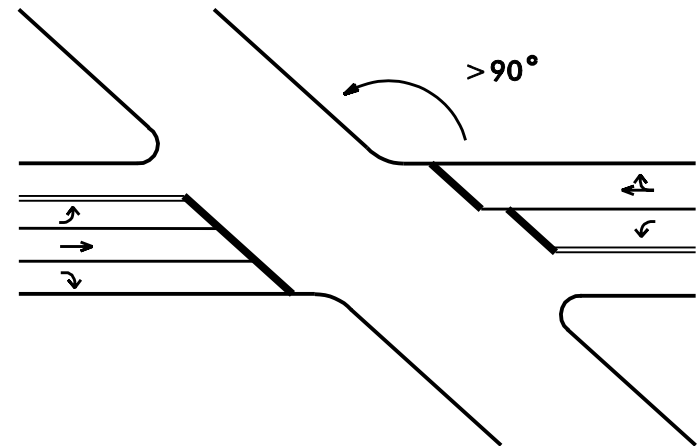
SHEET 1 OF 1

CASE 1



For approaches with intersection angles less than 90 degrees, place stop lines perpendicular to the centerline of the approach.

CASE 2



For approaches with intersection angles greater than 90 degrees, place stop lines parallel to the edge of the intersecting roadway.

Notes

- "Intersection angle" is defined as the angle between the approach in question and the intersection roadway to the right.
- Typically, place stop lines no more than 30 feet (9.1m) nor less than 4 feet (1.2m) from the nearest edge of the intersecting travel way.
- For stop line locations at crosswalks, locate stop line 4 feet (1.2m) behind and parallel to the nearest crosswalk line, but not within the area of a wheelchair ramp.

Reference: Roadway Standard
Drawings 1205.04 and 1205.07

Stop Lines

SIGNALS & GEOMETRICS SECTION
TRAFFIC ENGINEERING AND SAFETY SYSTEMS BRANCH
NORTH CAROLINA DEPARTMENT OF TRANSPORTATION

STD. NO.

9.1

SHEET 1 OF 1

7-04