



STATE OF NORTH CAROLINA  
DEPARTMENT OF TRANSPORTATION

MICHAEL F. EASLEY  
GOVERNOR


LYNDO TIPPETT  
SECRETARY

June 20, 2008

MEMORANDUM

To: R. E. Greene, Jr., P.E.  
Division Engineer

J. W. Bowman, P.E.  
Division Engineer

From: J. Kevin Lacy, P.E.   
State Traffic Engineer

Subject: Route Change Request in Johnston and Wake Counties

Attached are copies of the highway traffic ordinances, effective June 20, 2008, adding the routing of US 70 (Clayton Bypass) in Johnston and Wake Counties. A map is also attached for your reference. Please revise signing as necessary.

If you have any questions or need additional information, please let me know.

JKL:lna

Attachment

cc: P. H. Daughtry, III, P.E., att.  
K. L. Becker, P.E., att.  
A. Brown, att.  
S. Johnson, att.  
Hardee Cox, att.  
R. J. Jaeger, P.E., att.



BOARD OF TRANSPORTATION  
HIGHWAY TRAFFIC ORDINANCES

The Board of Transportation has delegated to the Secretary of Transportation the authority to adopt and promulgate all rules and regulations and ordinances regulating traffic on the highways pursuant to authority of N.C.G.S. 143B-350 (g) (see 19A1NCAC 4A.0104).

The State Traffic Engineer is subdelegated the authority by the Secretary of Transportation to adopt and promulgate all necessary rules, regulations and ordinances for the use of and to police traffic on state highways, pursuant to authority of N.C.G.S. 143B-350 (g) (see 19A1NCAC 4A.0104).

Pursuant to that delegation, the State Traffic Engineer hereby adopts and promulgates the following ordinances based on traffic and engineering studies performed by the Traffic Engineering Branch, Department of Transportation, and in accordance with General Statute 136-30, 136-54.

**ROUTE CHANGE**

**Division 4**

**Johnston County**

Delete the following routing of US 70 and add as an extension of US 70 Business:

US 70 from US 70 Business at the eastern end of TIP Project R-2552C to the Wake County Line.

Add the following routing of US 70:

US 70 from US 70 Business to the Wake County Line along the R-2552 series of TIP Projects.

**Division 5**

**Wake County**

Delete the following routing of US 70 and add as an extension of US 70 Business:

US 70 from the Johnston County Line to I-40.

Add the following routing of US 70:

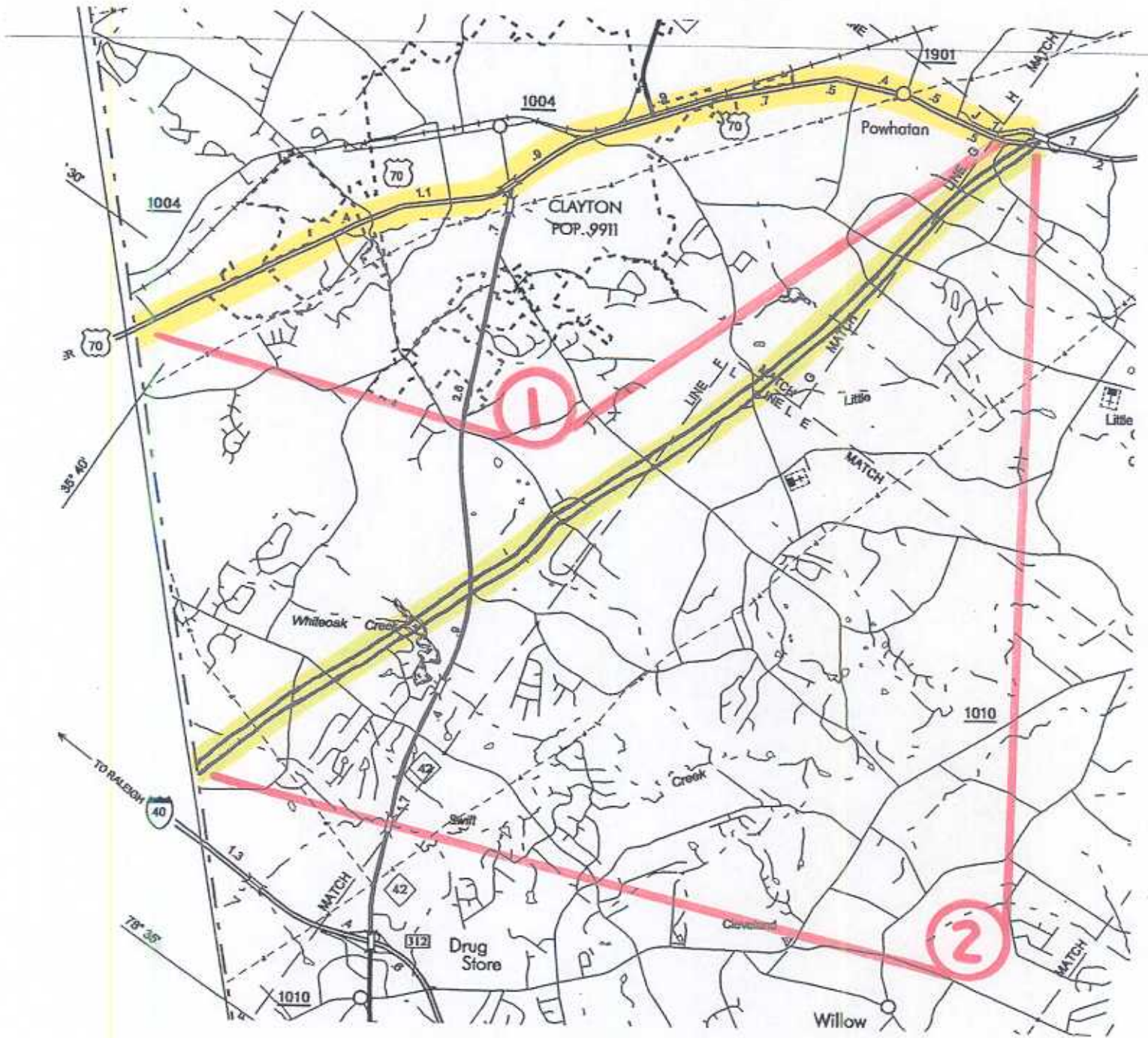
US 70 from the Johnston County Line along TIP Project R-2552AA.

Add the following routing of US 70:

I-40/US 70 from US 70 (Exit 309) to US 70 Business (Exit 306).



# Johnston County



# Wake County

