



STATE OF NORTH CAROLINA
DEPARTMENT OF TRANSPORTATION

MICHAEL F. EASLEY
GOVERNOR

LYNDO TIPPETT
SECRETARY

December 17, 2003

MEMORANDUM

To: Pat Ivey, P.E.
Division Engineer

From: Troy Peoples, P.E. *Troy Peoples*
State Traffic Engineer

Subject: Notification of Route Change

Attached is a copy of a highway traffic ordinance, effective December 15, 2003, changing the routing of NC 152 and SR 1337 in Rowan County. Maps are attached for your reference. Please revise signing as necessary.

If you have any questions or need additional information, please let me know.

TAP:jff

Attachment

Cc: V. L. Embry, att.
K. J. Lacy, P.E., CPM, att.
J. P. Couch, att.
Hardee Cox, att.



STATE OF NORTH CAROLINA
 DEPARTMENT OF TRANSPORTATION
 P.O. BOX 25201, RALEIGH, N.C. 27611-5201

CERTIFICATION OF RULEMAKING

Certifying Agency: Department of Transportation

Certified Rule (Citation): Highway Traffic Ordinances 2003-200, 2003-201, 2003-202, 2003-203, 2003-204, 2003-208

Action: X Adoption Amendment X Repeal

Formal Action Date:

Statutory Authority:
 GS 136-18 (5),
 GS 20-141, 20-141.1,
 GS 136-30, 136-54,
 GS 20-158 (a)

Public Notice Date:
 N/A

Public Hearing Date:
 N/A

Public Hearing Not Required For This Action Under:
 GS 150A-1, 20-1

Rule Summary: (Also indicate change in rule if amended):

No Parking Zone, Municipal Speed Zone, Rural Speed Zone, Temporary Speed Limit, Route Change, Stop Sign Inventory

Circumstances Requiring Rule Adoption, Amendment or Repeal:

Necessary for public safety and welfare.

Effective Date: December 15, 2003

Troy A Peoples
 OFFICER SIGNATURE

Troy A. Peoples, P.E.
 TYPED NAME

State Traffic Engineer
 TITLE

BOARD OF TRANSPORTATION
HIGHWAY TRAFFIC ORDINANCES

The Board of Transportation has delegated to the Secretary of Transportation the authority to adopt and promulgate all rules and regulations and ordinances regulating traffic on the highways pursuant to authority of N.C.G.S. 143B-350 (g) (see 19A1NCAC 4A.0104).

The State Traffic Engineer is subdelegated the authority by the Secretary of Transportation to adopt and promulgate all necessary rules, regulations and ordinances for the use of and to police traffic on state highways, pursuant to authority of N.C.G.S. 143B-350 (g) (see 19A1NCAC 4A.0104).

Pursuant to that delegation, the State Traffic Engineer hereby adopts and promulgates the following ordinances based on traffic and engineering studies performed by the Traffic Engineering Branch, Department of Transportation, and in accordance with General Statute 136-30, 136-54.

ROUTE CHANGES

Division 09

Rowan County

Delete the following routing of NC 152 and add the remaining segment as a Secondary Road:

NC 152, from SR 1337 northward to US 29. (Length 0.66 mile)

NC 152, from US 29 northward to US 29. (Length 0.37 mile)

Delete the following routing of SR 1337 and add the remaining segment as NC 152:

SR 1337, from US 29 northward to SR 2739. (Length 0.32 mile)

Add the following routing as NC 152:

Along US 29, from SR 1337 northward to NC 152. (Length 0.60 mile)

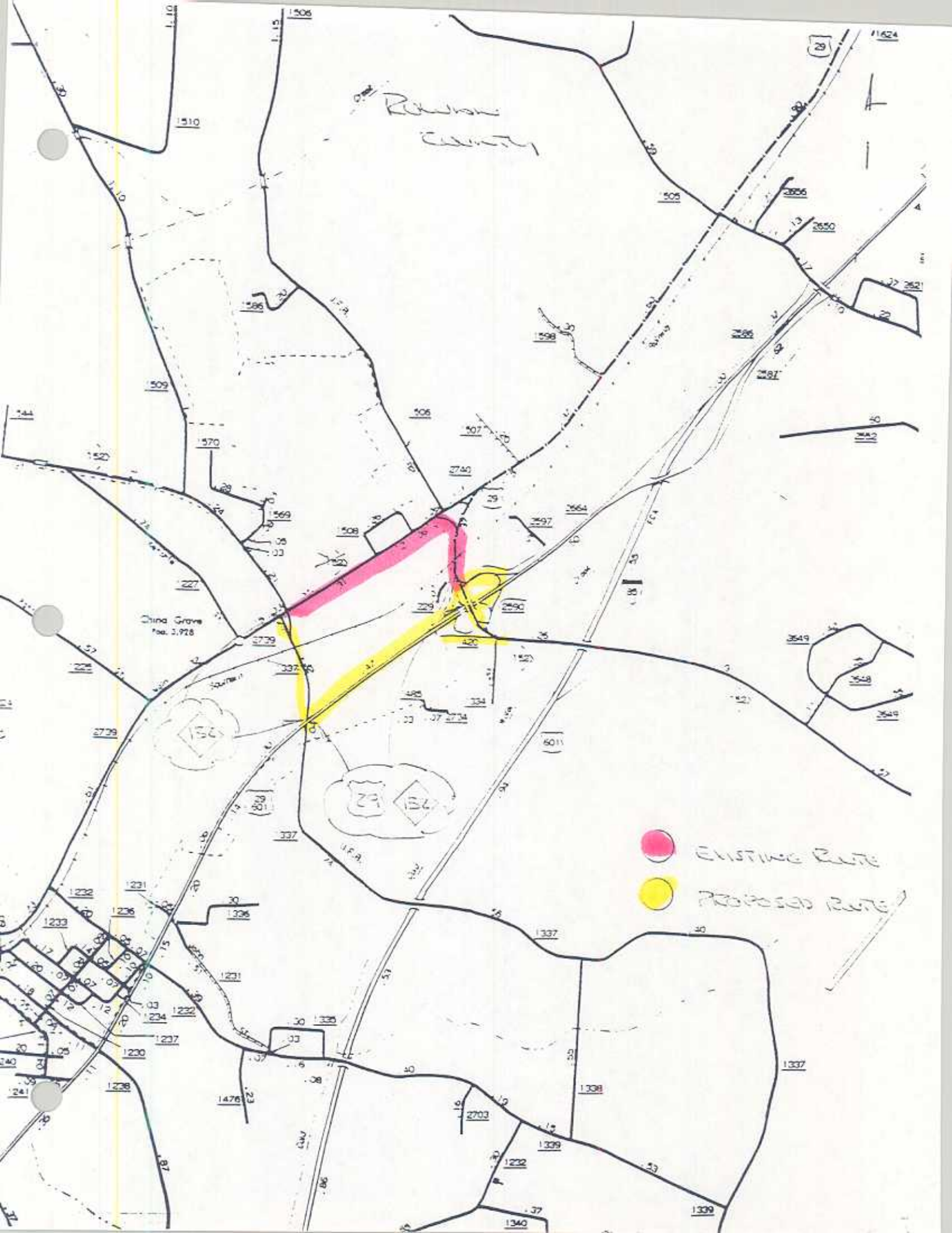
The foregoing Highway Traffic Ordinances are hereby adopted in accordance with the General Statutes of North Carolina (G.S. 136-18 (5); 143B-350 (f), 143B-350 (g) and 19ANCAC 4A.0004). The Highway Traffic Ordinances herein adopted are identified as follows:

ORDINANCE NO.	ORDINANCE TYPE	ADOPT	REPEAL	AMEND	EFFECTIVE DATE
2003-200	No Parking Zone			0	December 15, 2003
2003-201	Municipal Speed Zone			0	December 15, 2003
2003-202	Rural Speed Zone			0	December 15, 2003
2003-203	Temporary Speed Zone			0	December 15, 2003
2003-204	NC Route Changes			0	December 15, 2003
2003-208	Stop & Yield Inventory			0	December 15, 2003

The Division Engineer for each affected Division shall cause to be erected appropriate signs indicating the action of the State Traffic Engineer, and these ordinances shall be in full force and effect from and after the erection of such signs.

Troy A Peoples
State Traffic Engineer

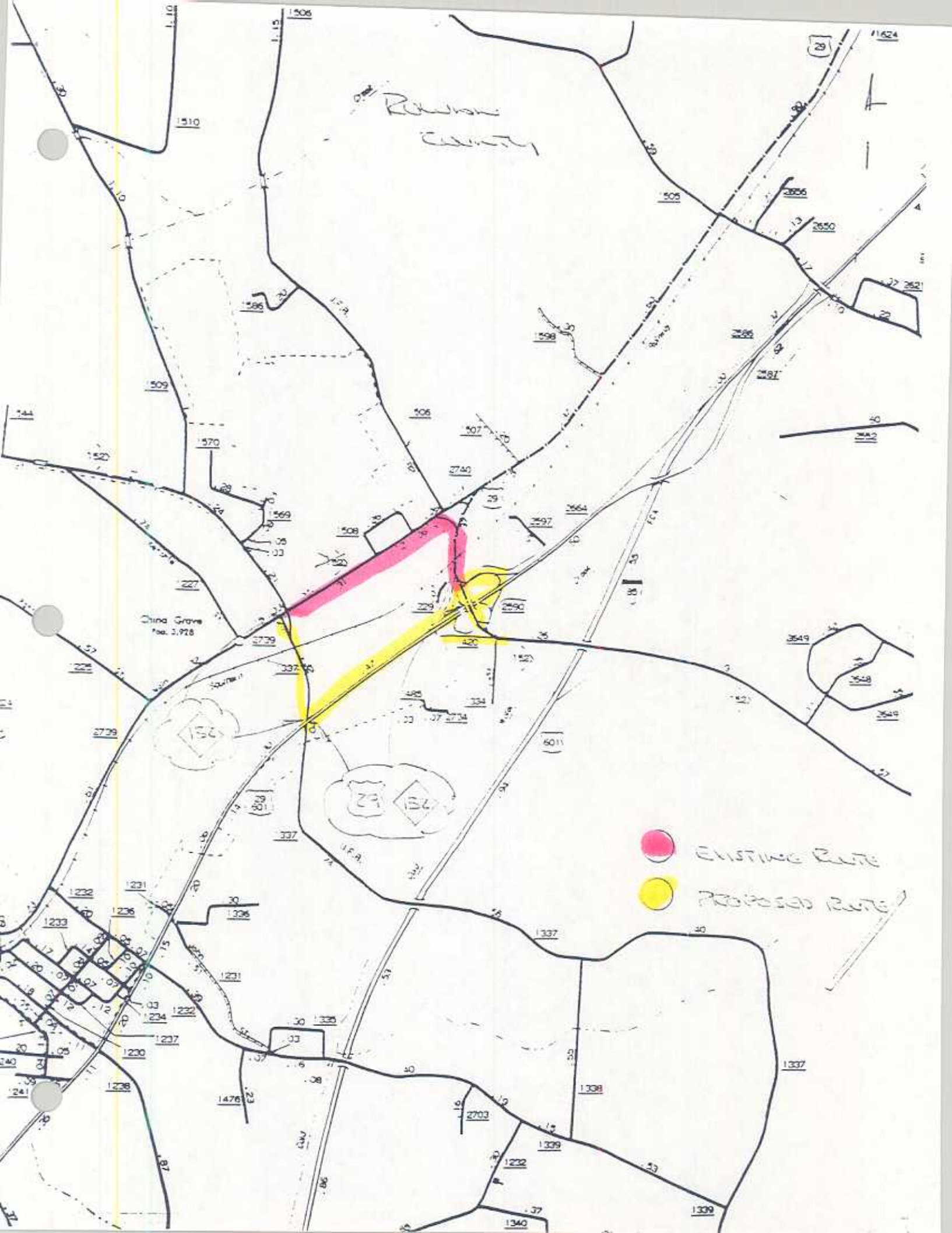
12/15/03
Date



Rowan County

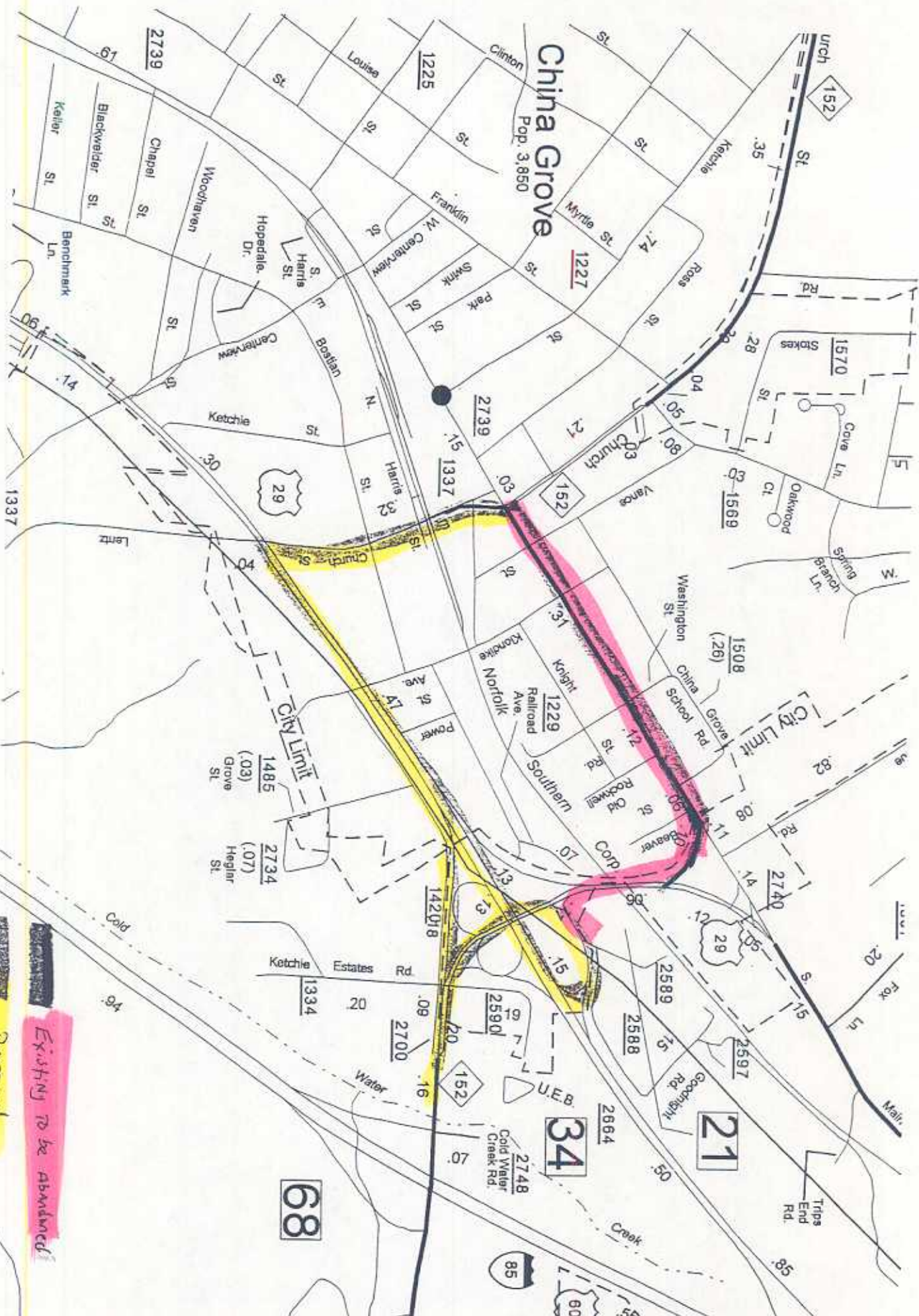
China Grave
Fee: 3,928

EXISTING RATE
PROPOSED RATE



China Grove

Pop. 3,850



Existing to be abandoned
Proposed

68

34

21

85

601