



STATE OF NORTH CAROLINA  
DEPARTMENT OF TRANSPORTATION

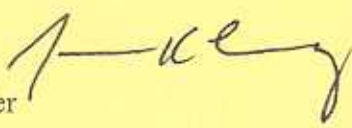
MICHAEL F. EASLEY  
GOVERNOR

LYNDO TIPPETT  
SECRETARY

January 4, 2005

MEMORANDUM

To: M. A. Pettyjohn, P.E.  
Division Engineer

From: J. Kevin Lacy, P.E.   
State Traffic Engineer

Subject: Notification of Route Change

Attached are copies of the highway traffic ordinances, effective December 30, 2005, changing the routing of US 421 and US 421/US 221 in Watauga, Yadkin and Wilkes Counties. A map is also attached for your reference. Please revise signing as necessary.

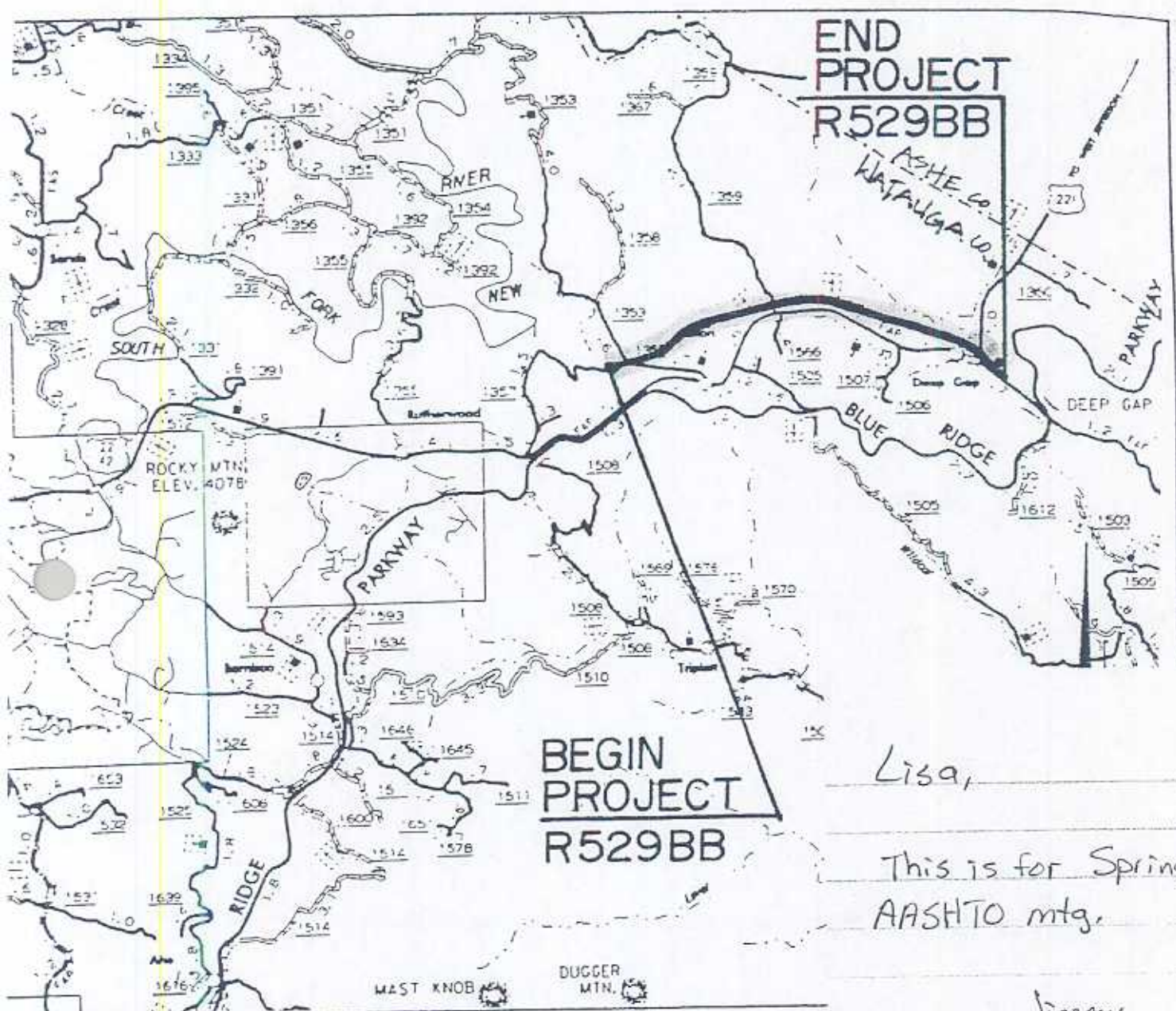
If you have any questions or need additional information, please let me know.

JKL:jh

Attachment

cc: J. A. Hamrick, P.E., att.  
Brian K. Mayhew, P.E., att.  
J. D. Ledbetter, Jr., P.E., att.  
Hardee Cox, att.

Sheet 1-A For Index of Sheets  
 Sheet 1-B For Conventional Symbols



Lisa,

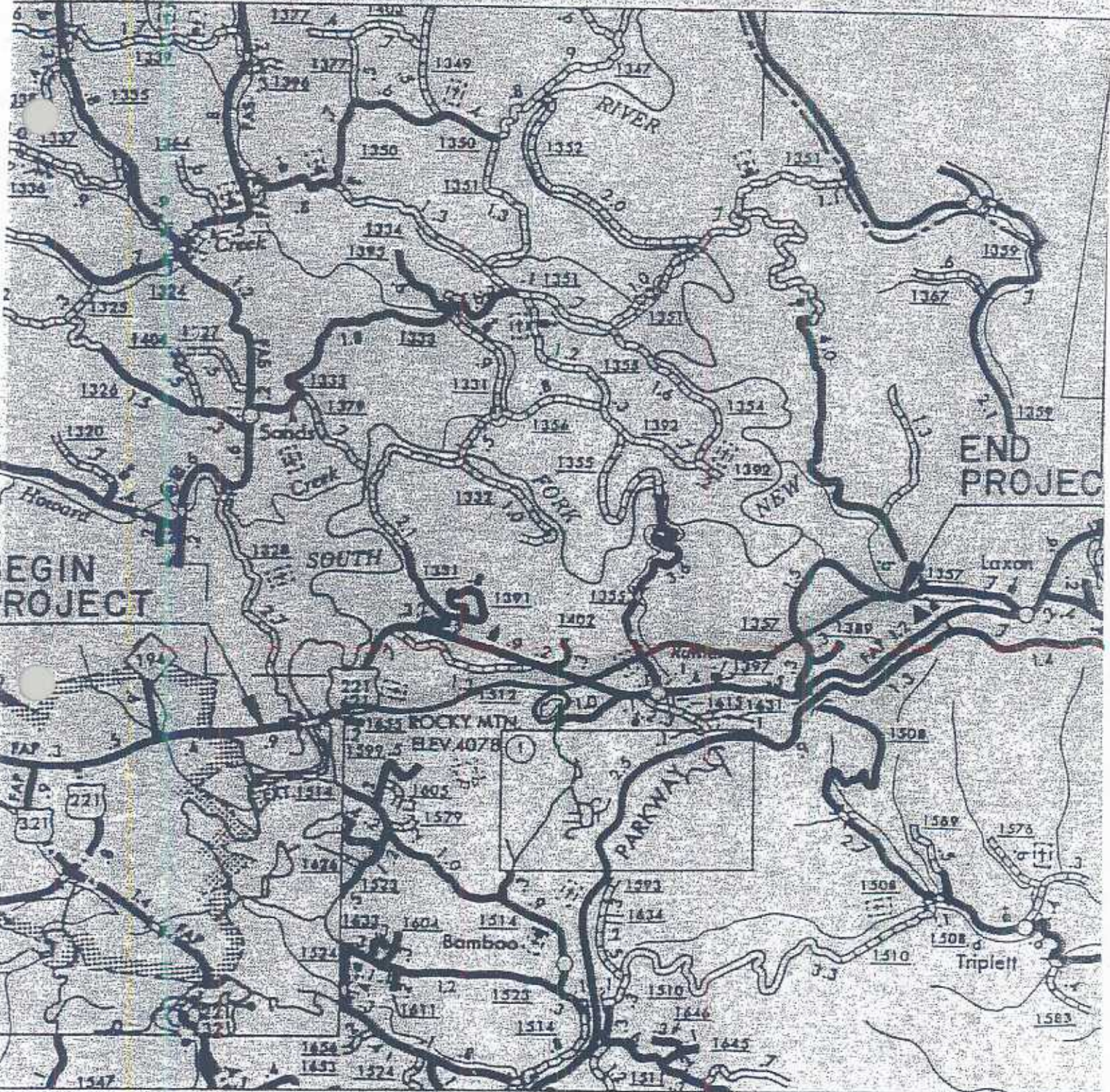
This is for Spring  
 AASHTO mtg.

Jimmy

SHOWING VICINITY OF STATE PROJECT &  
 STOPPING POINT - BOONE, NORTH CAROLINA

Delete US 421/US 221 & Add as SR  
 Add US 421/US 221





**VICINITY MAP  
SHOWING LOCATION OF STATE  
PROJECT 8.T750803**

Add US 421 / US 221





BOARD OF TRANSPORTATION  
HIGHWAY TRAFFIC ORDINANCES

The Board of Transportation has delegated to the Secretary of Transportation the authority to adopt and promulgate all rules and regulations and ordinances regulating traffic on the highways pursuant to authority of N.C.G.S. 143B-350 (g) (see 19A1NCAC 4A.0104).

The State Traffic Engineer is subdelegated the authority by the Secretary of Transportation to adopt and promulgate all necessary rules, regulations and ordinances for the use of and to police traffic on state highways, pursuant to authority of N.C.G.S. 143B-350 (g) (see 19A1NCAC 4A.0104).

Pursuant to that delegation, the State Traffic Engineer hereby adopts and promulgates the following ordinances based on traffic and engineering studies performed by the Traffic Engineering Branch, Department of Transportation, and in accordance with General Statute 136-30, 136-54.

ROUTE CHANGES

Division 03

Brunswick County

1. Delete the following routing of US 74 and add to US 421/NC 133 (northward to the southerly New Hanover County Line):

From US 17/US 74/US 76/US 421 in Brunswick County, eastward to the westerly New Hanover County Line.

New Hanover County

1. Delete the following routing of US 74 and add to US 421/NC 133 northward to Project U-0092A (Isabel Stellings Holmes Bridge), and add to TIP Projects U-0092A and U-0092B, concurrent with part of NC 133, and add to SR 2649:

From the easterly Brunswick County line, eastward in New Hanover County concurrent with US 76/US 421 on the Cape Fear Memorial Bridge to the Wilmington western corporate limit, then in Wilmington to US 17 Business (South Third Street)/US 421, eastward on (one-way eastbound) US 17N/US 74E/US 76E (Dawson Street), northward on (one-way northbound) US 17N (South Seventeenth Street), US 17/74 (Market Street) to US 74 (Eastwood Road)/SR 2649 (Martin Luther King, Jr. Parkway); also southbound on (one-way southbound) US 17S (South Sixteenth Street) from US 17S/US 74W/US 76W (Wooster Street) from the aforesaid South Sixteenth Street to the aforesaid South Third Street.



## ROUTE CHANGES

### Division 03

#### New Hanover County

1. Delete the following routing of SR 2649 and add as US 74:

Martin Luther King, Jr. Parkway from SR 1302 (North Twenty-third Street) eastward to US 17 (Market Street) in Wilmington and New Hanover County.

2. Delete the following routing of NC 133 and add as Secondary Road:

North Front Street, North Fourth Street and Cornelius Harnett Street in the City of Wilmington, Castle Hayne Road in New Hanover County, from Wilmington north corporate limit northward to Project U-0092A.

### Division 07

#### Guilford County

1. Delete the following routing of US 311 and add as US 311 Business:

US 311 (Main Street) from Business I-85 northward to US 311. (Distance 5.19 miles)

2. Delete the following routing of SR 1979:

From US 311 eastward to NC 68 (Distance 1.70 miles)

3. Delete the following routing of Business I-85, US 29-70 and add as Business I-85, US 29-70-311:

From US 311 northward to new US 311. (Distance 1.36)

4. Add the following routing as US 311:

From Business I-85, US 29-70 northward to US 311. (Distance 6.92 miles)

## ROUTE CHANGES

### Division 8

#### Chatham County

1. Delete the following routing of US 64 and add as US 64 Business:

US 64 from TIP Project R-2219 at SR 1514 eastward to TIP Project R-2219, 0.62 mile east of SR 1572.

2. Add the following routing of US 64:

US 64 from existing US 64 west of Pittsboro, eastward along TIP Project R-2219 to existing US 64 east of Pittsboro.

### Division 11

#### Watauga County

1. Delete the following routing of US 421/US 221 and add the remaining segment as a Secondary Road:

US 421/US 221, from US 421/US 221 (new), a point 0.1 mile east of SR 1655 to US 421 (new)/US 221. (Length = 8.2 miles)

2. Delete the following routing of US 421 and add the remaining segment as a Secondary Road:

From US 221 to US 421 (new). (Length = 0.24 mile)

3. Add the following routing of US 421/US 221:

Project R-529BA & R-529BB from a point 0.1 mile east of SR 1655 to US 221. (Length = 7.59 miles)

4. Add the following routing of US 421:

Project R-529BB from US 221 to a point 0.26 mile east of US 221. (Length = 0.26 mile)

## ROUTE CHANGES

### Division 11

#### Yadkin/Wilkes Counties

1. Delete the following routing of US 421 and add the remaining segment as a Secondary Road:

US 421, from SR 1103 in Yadkin County northward to a point approximately 0.30 mile north of the northern intersection of SR 2401 in Wilkes County. (Length 5.00 miles)

2. Add the following routing as US 421:

Project 6769007T (R-2239C), from station number -L-pot 211 + 60.000 located at SR 1103 in Yadkin County northward to station -L- poc 122-40.000, a point approximately 0.30 mile north of the northern intersection of SR 2401 in Wilkes County. (Length 5.54 miles)

### Division 13

#### Madison County

1. Add the following routing of US 23:

I-26 from the Tennessee State Line eastward to US 19 (Exit 9).

2. Delete the following routing of US 23 and add as US 23 Alternate:

US 19 from I-26 eastward to existing US 23.

3. Delete the following routing of US 23 and add as US 23 Alternate:

US 23 from US 19 northward to SR 1346.

4. Delete the following routing of SR 1346 and add as US 23 Alternate:

SR 1346 from I-26 eastward to existing US 23.

5. Delete the following routing of US 23 and add as a secondary route:

US 23 from SR 1346 northward to Tennessee State Line.



The foregoing Highway Traffic Ordinances are hereby adopted in accordance with the General Statutes of North Carolina (G.S. 136-18 (5); 143B-350 (f), 143B-350 (g) and 19ANCAC 4A.0004). The Highway Traffic Ordinances herein adopted are identified as follows:

ORDINANCE TYPE	ADOPT	REPEAL	AMEND	EFFECTIVE DATE
Route Changes	6	15	0	December 30, 2005

The Division Engineer for each affected Division shall cause to be erected appropriate signs indicating the action of the State Traffic Engineer, and these ordinances shall be in full force and effect from and after the erection of such signs.

  
State Traffic Engineer

1/9/2006  
Date