

14 BEFORE & AFTER COLLISION DIAGRAMS AT ROUNDABOUTS IN NORTH CAROLINA

LOCATION MAP: Roundabout Locations for Preliminary Evaluation

- Yellow dot: Group 1. Seven Locations with Mainline Speed Limit At or Below 35 mph (Prior Control - Stop Sign)***
- Red dot: Group 2. Six Locations with Mainline Speed Limit Above 35 mph (Prior Control - Stop Sign)***
- Blue dot: Group 3. One Location with Mainline Speed Limit At or Below 35 mph (Prior Control - Signal)***



GROUP 1

Pullen at Stinson



PULLEN RD AT STINSON DR

WAKE CO.

NOVEMBER 1, 1999 - DECEMBER 31, 2002

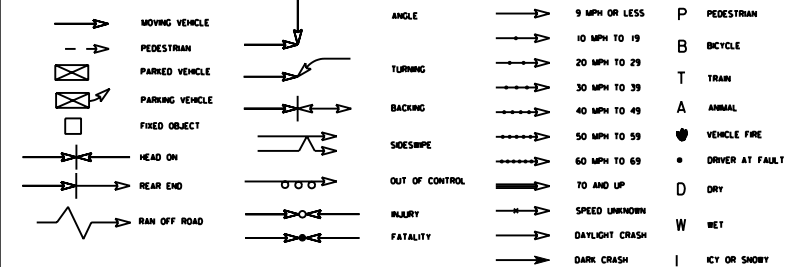
(3.17 YRS)

BEFORE PERIOD - TOTAL CRASHES

PULLEN RD

PULLEN PARK THEATRE

LEGEND



25 mph

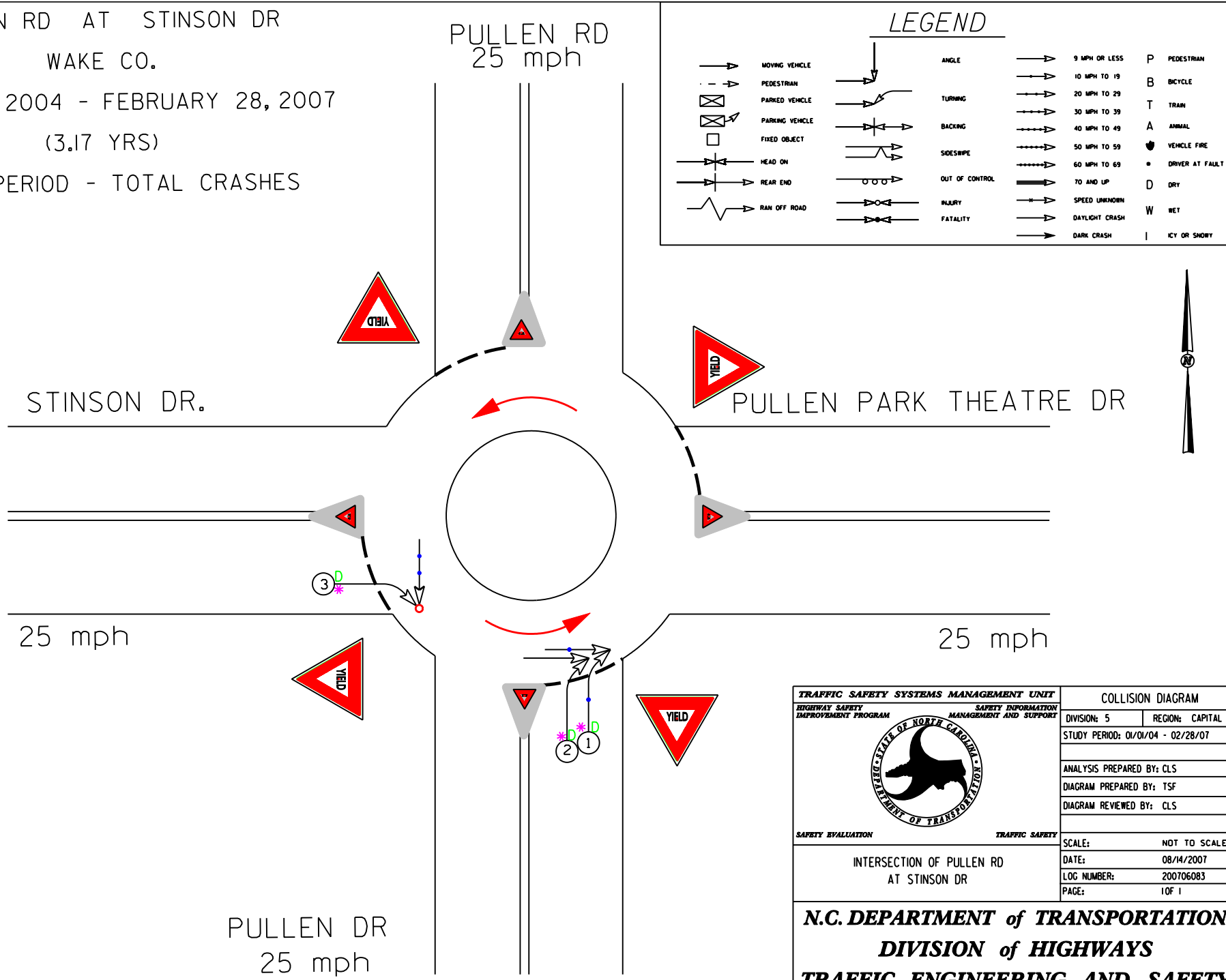
STINSON DR

25 mph

PULLEN RD
25 mph

TRAFFIC SAFETY SYSTEMS MANAGEMENT UNIT		COLLISION DIAGRAM	
HIGHWAY SAFETY IMPROVEMENT PROGRAM	SAFETY INFORMATION MANAGEMENT AND SUPPORT	DIVISION: 5	REGION: CAPITAL
		STUDY PERIOD: 11/01/99 - 12/31/02	
		ANALYSIS PREPARED BY: CLS	
		DIAGRAM PREPARED BY: TSF	
		DIAGRAM REVIEWED BY: CLS	
SAFETY EVALUATION	TRAFFIC SAFETY	SCALE:	NOT TO SCALE
INTERSECTION OF PULLEN RD AT STINSON DR		DATE:	08/13/2007
		LOG NUMBER:	200706083
		PAGE:	1 OF 1
N.C. DEPARTMENT of TRANSPORTATION DIVISION of HIGHWAYS TRAFFIC ENGINEERING AND SAFETY SYSTEMS BRANCH			

PULLEN RD AT STINSON DR
 WAKE CO.
 JANUARY 1, 2004 - FEBRUARY 28, 2007
 (3.17 YRS)
 AFTER PERIOD - TOTAL CRASHES



LEGEND			
	MOVING VEHICLE		ANGLE
	PEDESTRIAN		TURNING
	PARKED VEHICLE		BACKING
	PARKING VEHICLE		SIDESWIPE
	FIXED OBJECT		OUT OF CONTROL
	HEAD ON		INJURY
	REAR END		FATALITY
	RAN OFF ROAD		9 MPH OR LESS
			10 MPH TO 19
			20 MPH TO 29
			30 MPH TO 39
			40 MPH TO 49
			50 MPH TO 59
			60 MPH TO 69
			70 AND UP
			SPEED UNKNOWN
			DAYLIGHT CRASH
			DARK CRASH
			P PEDESTRIAN
			B BICYCLE
			T TRAIN
			A ANIMAL
			VEHICLE FIRE
			DRIVER AT FAULT
			D DRY
			W WET
			I ICY OR SNOWY

TRAFFIC SAFETY SYSTEMS MANAGEMENT UNIT		COLLISION DIAGRAM	
HIGHWAY SAFETY IMPROVEMENT PROGRAM	SAFETY INFORMATION MANAGEMENT AND SUPPORT	DIVISION: 5	REGION: CAPITAL
		STUDY PERIOD: 01/01/04 - 02/28/07	
		ANALYSIS PREPARED BY: CLS	
		DIAGRAM PREPARED BY: TSF	
		DIAGRAM REVIEWED BY: CLS	
SAFETY EVALUATION	TRAFFIC SAFETY	SCALE:	NOT TO SCALE
INTERSECTION OF PULLEN RD AT STINSON DR		DATE:	08/14/2007
		LOG NUMBER:	200706083
		PAGE:	1 OF 1
N.C. DEPARTMENT of TRANSPORTATION DIVISION of HIGHWAYS TRAFFIC ENGINEERING AND SAFETY SYSTEMS BRANCH			

Park at Tremont



PARK RD AT TREMONT AVE

MECKLENBURG CO.

NOVEMBER 1, 1999 - DECEMBER 31, 2002

(3.17 YRS)

BEFORE PERIOD - TOTAL CRASHES



25 mph

E TREMONT AVE



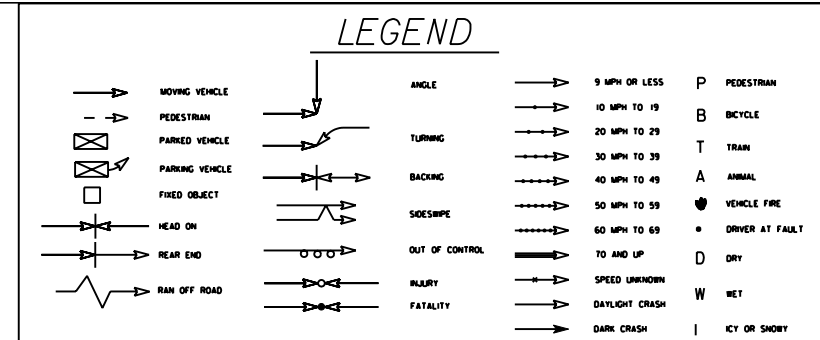
PARK RD

BROOKSIDE AVE



PARK RD

25 mph



TRAFFIC SAFETY SYSTEMS MANAGEMENT UNIT		COLLISION DIAGRAM	
HIGHWAY SAFETY IMPROVEMENT PROGRAM	SAFETY INFORMATION MANAGEMENT AND SUPPORT	DIVISION: 10	REGION: METRO
		STUDY PERIOD: 11/01/99 - 12/31/02	
		ANALYSIS PREPARED BY: CLS	
		DIAGRAM PREPARED BY: TSF	
		DIAGRAM REVIEWED BY: CLS	
SAFETY EVALUATION	TRAFFIC SAFETY	SCALE:	NOT TO SCALE
INTERSECTION OF PARK RD AT TREMONT AVE		DATE:	08/13/2007
		LOG NUMBER:	200706083
		PAGE:	1 OF 1
N.C. DEPARTMENT of TRANSPORTATION DIVISION of HIGHWAYS TRAFFIC ENGINEERING AND SAFETY SYSTEMS BRANCH			

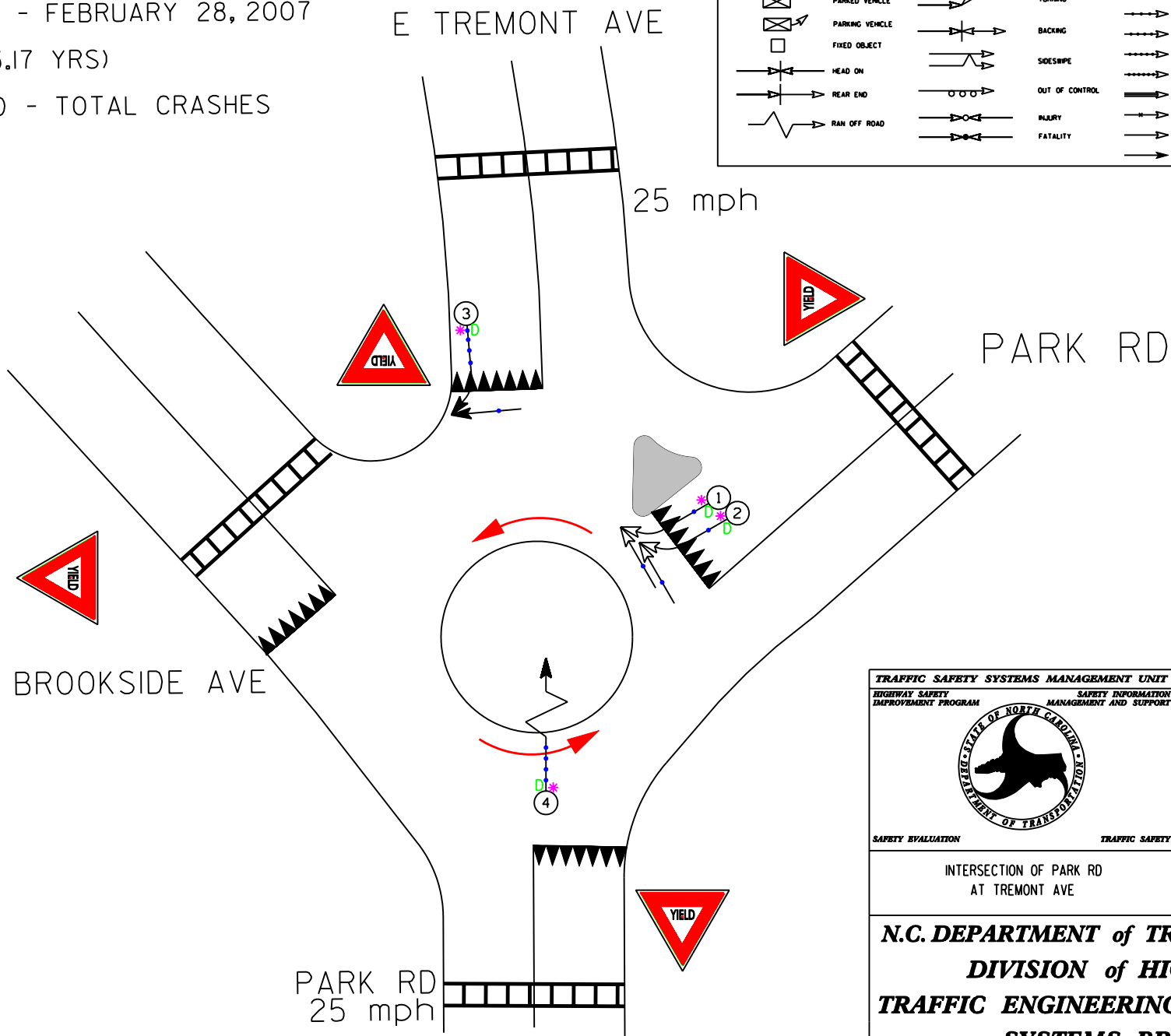
PARK RD AT TREMONT AVE

MECKLENBURG CO.

JANUARY 1, 2004 - FEBRUARY 28, 2007

(3.17 YRS)

AFTER PERIOD - TOTAL CRASHES



LEGEND

	MOVING VEHICLE		ANGLE		9 MPH OR LESS		P PEDESTRIAN
	PEDESTRIAN		TURNING		10 MPH TO 19		B BICYCLE
	PARKED VEHICLE		BACKING		20 MPH TO 29		T TRAIN
	PARKING VEHICLE		SIDESWIPE		30 MPH TO 39		A ANIMAL
	FIXED OBJECT		OUT OF CONTROL		40 MPH TO 49		VEHICLE FIRE
	HEAD ON		INJURY		50 MPH TO 59		DRIVER AT FAULT
	REAR END		FATALITY		60 MPH TO 69		D DRY
	RAN OFF ROAD		DAYLIGHT CRASH		70 AND UP		W WET
			DARK CRASH		SPEED UNKNOWN		I ICE OR SNOW

TRAFFIC SAFETY SYSTEMS MANAGEMENT UNIT		COLLISION DIAGRAM	
HIGHWAY SAFETY IMPROVEMENT PROGRAM	SAFETY INFORMATION MANAGEMENT AND SUPPORT	DIVISION: 10	REGION: METRO
		STUDY PERIOD: 01/01/04 - 02/28/07	
		ANALYSIS PREPARED BY: CLS	
		DIAGRAM PREPARED BY: TSF	
		DIAGRAM REVIEWED BY: CLS	
SAFETY EVALUATION		TRAFFIC SAFETY	
INTERSECTION OF PARK RD AT TREMONT AVE		SCALE:	NOT TO SCALE
		DATE:	08/14/2007
		LOG NUMBER:	200706083
		PAGE:	1 OF 1
N.C. DEPARTMENT of TRANSPORTATION			
DIVISION of HIGHWAYS			
TRAFFIC ENGINEERING AND SAFETY			
SYSTEMS BRANCH			

Washington at Glendale



GLENDALE AVE. AT WASHINGTON ST

DURHAM CO.

NOVEMBER 1, 1993 - DECEMBER 31, 1999
(6.17 YRS)

BEFORE PERIOD - TOTAL CRASHES

GLENDALE AVE.
35 mph

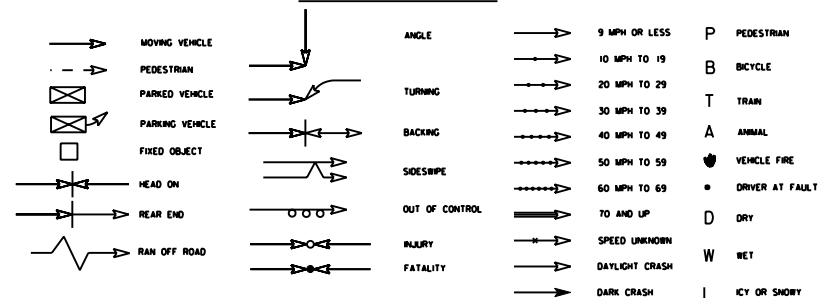
COLGATE AVE.

35 mph



WASHINGTON ST

LEGEND



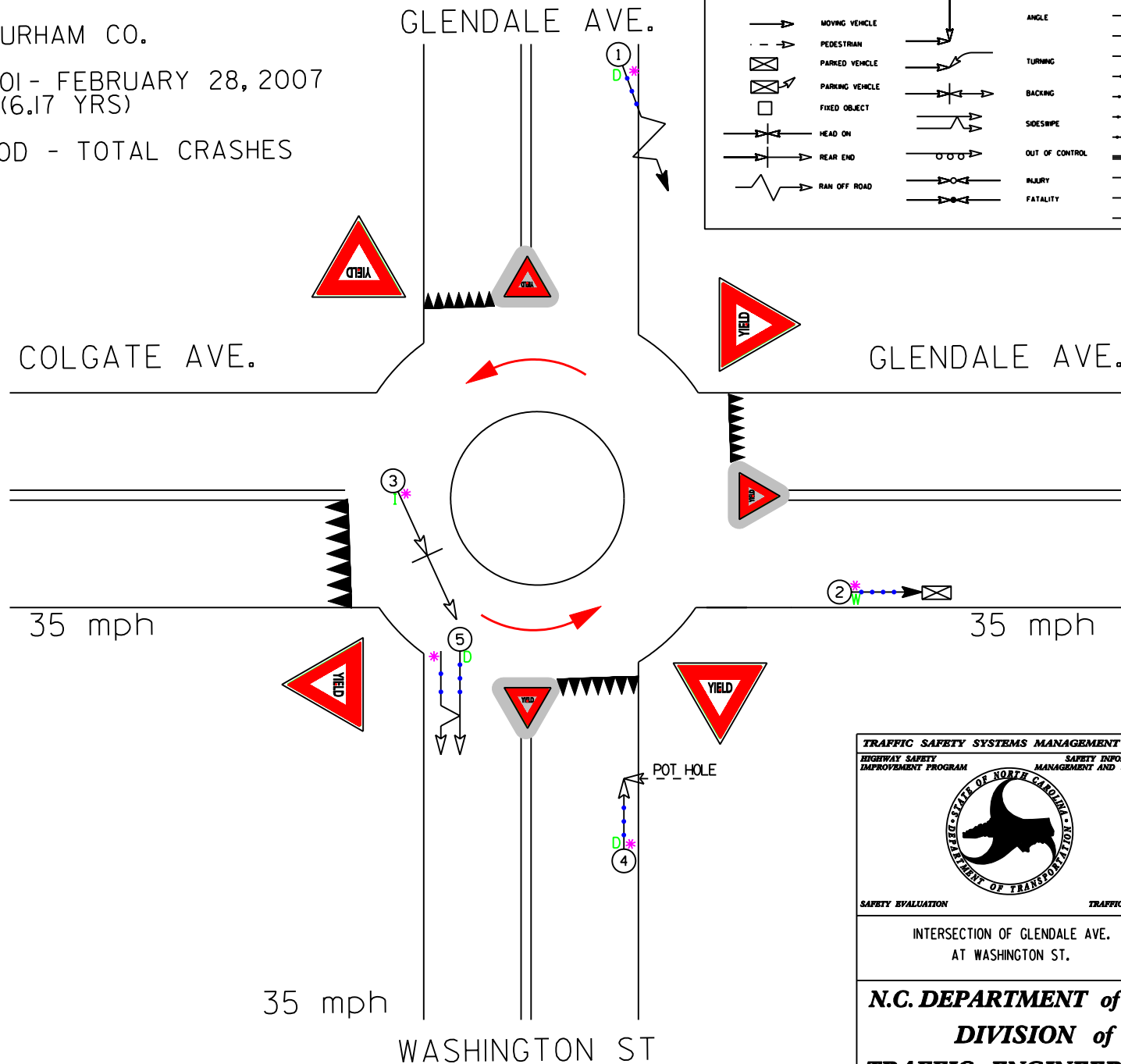
TRAFFIC SAFETY SYSTEMS MANAGEMENT UNIT		COLLISION DIAGRAM	
HIGHWAY SAFETY IMPROVEMENT PROGRAM	SAFETY INFORMATION MANAGEMENT AND SUPPORT	DIVISION: 5	REGION: CAPITAL
		STUDY PERIOD: 11/01/93 - 12/31/99	
		ANALYSIS PREPARED BY: CLS	
		DIAGRAM PREPARED BY: TSF	
		DIAGRAM REVIEWED BY: CLS	
SAFETY EVALUATION		TRAFFIC SAFETY	
INTERSECTION OF GLENDALE AVE. AT WASHINGTON ST		SCALE:	NOT TO SCALE
		DATE:	08/28/2007
		LOG NUMBER:	200706083
		PAGE:	1 OF 1
N.C. DEPARTMENT of TRANSPORTATION DIVISION of HIGHWAYS TRAFFIC ENGINEERING AND SAFETY SYSTEMS BRANCH			

GLENDALE AVE. AT WASHINGTON ST


DURHAM CO.

JANUARY 1, 2001 - FEBRUARY 28, 2007
(6.17 YRS)

AFTER PERIOD - TOTAL CRASHES



LEGEND			
	MOVING VEHICLE		ANGLE
	PEDESTRIAN		TURNING
	PARKED VEHICLE		BACKING
	PARKING VEHICLE		SIDESWIPE
	FIXED OBJECT		OUT OF CONTROL
	HEAD ON		INJURY
	REAR END		FATALITY
	RAN OFF ROAD		9 MPH OR LESS
			10 MPH TO 19
			20 MPH TO 29
			30 MPH TO 39
			40 MPH TO 49
			50 MPH TO 59
			60 MPH TO 69
			70 AND UP
			SPEED UNKNOWN
			DAYLIGHT CRASH
			DARK CRASH
			P PEDESTRIAN
			B BICYCLE
			T TRAIN
			A ANIMAL
			VEHICLE FIRE
			DRIVER AT FAULT
			D DRY
			W WET
			I ICY OR SNOWY

TRAFFIC SAFETY SYSTEMS MANAGEMENT UNIT		COLLISION DIAGRAM	
	SAFETY EVALUATION	HIGHWAY SAFETY IMPROVEMENT PROGRAM	
		SAFETY INFORMATION MANAGEMENT AND SUPPORT	
		DIVISION: 5	REGION: CAPITAL
		STUDY PERIOD: 01/01/01 - 02/28/07	
INTERSECTION OF GLENDALE AVE. AT WASHINGTON ST.	TRAFFIC SAFETY	ANALYSIS PREPARED BY: CLS	
		DIAGRAM PREPARED BY: TSF	
		DIAGRAM REVIEWED BY: CLS	
		SCALE: NOT TO SCALE	
		DATE: 8/24/2007	
		LOG NUMBER: 200706083	
		PAGE: 1 OF 1	

N.C. DEPARTMENT of TRANSPORTATION

DIVISION of HIGHWAYS

TRAFFIC ENGINEERING AND SAFETY

SYSTEMS BRANCH

Westview at Buckingham



WESTVIEW DR AT BUCKINGHAM DR

FORSYTH CO.

NOVEMBER 1, 1995 - DECEMBER 31, 2000

(5.17 YRS)

BEFORE PERIOD - TOTAL CRASHES

WESTVIEW DR.

35 mph



BUCKINGHAM DR.

35 mph

BUCKINGHAM DR.

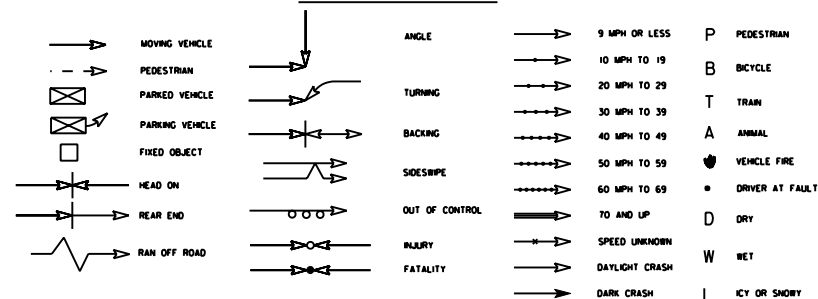


35 mph

35 mph

WESTVIEW DR.

LEGEND



TRAFFIC SAFETY SYSTEMS MANAGEMENT UNIT



SAFETY EVALUATION

TRAFFIC SAFETY

INTERSECTION OF WESTVIEW DR.
AT BUCKINGHAM DR.

COLLISION DIAGRAM

DIVISION: 9	REGION: TRIAD
STUDY PERIOD: 11/01/95 - 12/31/00	
ANALYSIS PREPARED BY: CLS	
DIAGRAM PREPARED BY: TSF	
DIAGRAM REVIEWED BY: CLS	
SCALE:	NOT TO SCALE
DATE:	08/24/2007
LOG NUMBER:	200706083
PAGE:	1 OF 1

N.C. DEPARTMENT of TRANSPORTATION
DIVISION of HIGHWAYS
TRAFFIC ENGINEERING AND SAFETY
SYSTEMS BRANCH

WESTVIEW DR. AT BUCKINGHAM DR.

FORSYTH CO.

JANUARY 1, 2002 - FEBRUARY 28, 2007

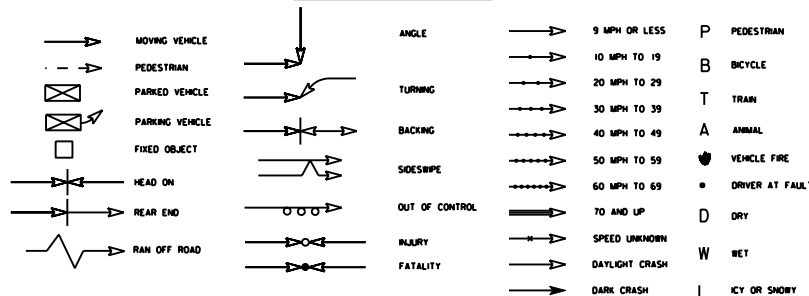
(5.17 YRS)

AFTER PERIOD - TOTAL CRASHES

WESTVIEW DR.

35 mph

LEGEND



35 mph


BUCKINGHAM DR.

BUCKINGHAM DR.

35 mph

35 mph

WESTVIEW DR.

TRAFFIC SAFETY SYSTEMS MANAGEMENT UNIT		COLLISION DIAGRAM	
HIGHWAY SAFETY IMPROVEMENT PROGRAM	SAFETY INFORMATION MANAGEMENT AND SUPPORT	DIVISION: 9	REGION: TRIAD
		STUDY PERIOD: 01/01/02 - 02/28/07	
		ANALYSIS PREPARED BY: CLS	
		DIAGRAM PREPARED BY: TSF	
		DIAGRAM REVIEWED BY: CLS	
SAFETY EVALUATION	TRAFFIC SAFETY	SCALE:	NOT TO SCALE
INTERSECTION OF WESTVIEW DR. AT BUCKINGHAM DR.		DATE:	8/24/2008
		LOG NUMBER:	200706083
		PAGE:	1 OF 1
N.C. DEPARTMENT of TRANSPORTATION DIVISION of HIGHWAYS TRAFFIC ENGINEERING AND SAFETY SYSTEMS BRANCH			

WT Weaver at University Heights



W. T. WEAVER BLVD AT UNIVERSITY HEIGHTS

BUNCOMBE CO.

UNIVERSITY HEIGHTS

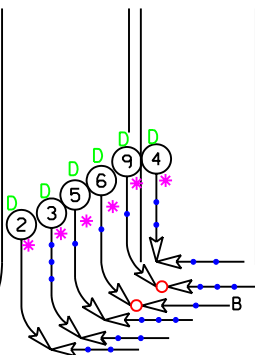
NOVEMBER 1, 1997 - DECEMBER 31, 2001

(4.17 YRS)

BEFORE PERIOD - TOTAL CRASHES



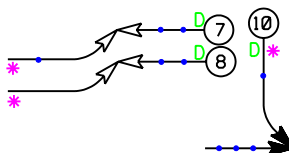
W. T. WEAVER BLVD



35 mph

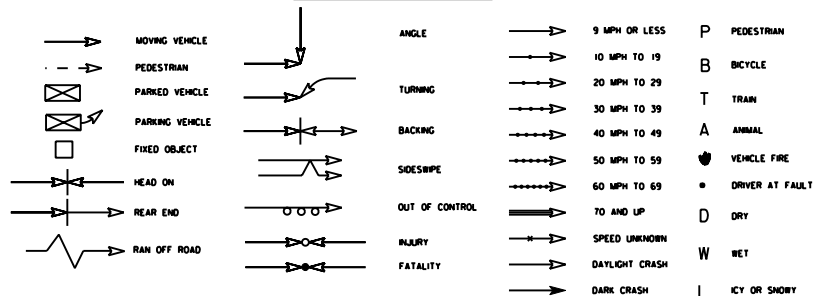


W. T. WEAVER BLVD



35 mph

LEGEND



TRAFFIC SAFETY SYSTEMS MANAGEMENT UNIT



SAFETY EVALUATION

INTERSECTION OF WT WEAVER BLVD
AT UNIVERSITY HEIGHTS

COLLISION DIAGRAM

DIVISION: 13	REGION: BLUE RIDGE
STUDY PERIOD: 11/01/97 - 12/31/01	
ANALYSIS PREPARED BY: CLS	
DIAGRAM PREPARED BY: TSF	
DIAGRAM REVIEWED BY: CLS	
SCALE: NOT TO SCALE	
DATE: 09/04/2006	
LOG NUMBER: 200602154	
PAGE: 1 OF 1	

N.C. DEPARTMENT of TRANSPORTATION
DIVISION of HIGHWAYS
TRAFFIC ENGINEERING AND SAFETY
SYSTEMS BRANCH

W. T. WEAVER BLVD AT UNIVERSITY HEIGHTS
BUNCOMBE CO.

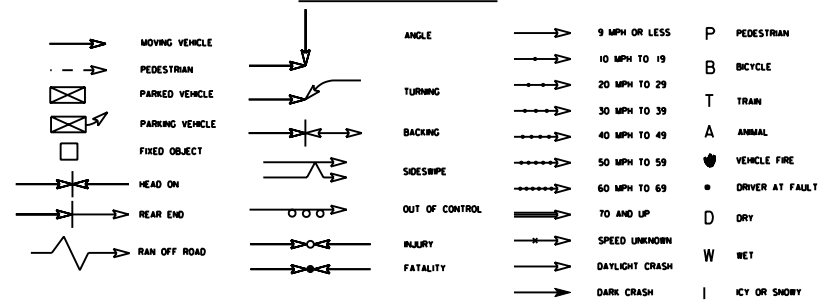
JANUARY 1, 2003 - FEBRUARY 28, 2007

(4.17 YRS)

AFTER PERIOD - TOTAL CRASHES

UNIVERSITY HEIGHTS

LEGEND



W. T. WEAVER BLVD

W. T. WEAVER BLVD

35 mph

35 mph

35 mph

TRAFFIC SAFETY SYSTEMS MANAGEMENT UNIT

HIGHWAY SAFETY IMPROVEMENT PROGRAM SAFETY INFORMATION MANAGEMENT AND SUPPORT



SAFETY EVALUATION TRAFFIC SAFETY

INTERSECTION OF W. T. WEAVER BLVD
AT UNIVERSITY HEIGHTS

COLLISION DIAGRAM

DIVISION: 13 REGION: BLUE RIDGE

STUDY PERIOD: 11/1/03 - 2/28/07

ANALYSIS PREPARED BY: CLS

DIAGRAM PREPARED BY: TSF

DIAGRAM REVIEWED BY: CLS

SCALE: NOT TO SCALE

DATE: 9/04/2007

LOG NUMBER: 200706083

PAGE: 1 OF 1

N.C. DEPARTMENT of TRANSPORTATION
DIVISION of HIGHWAYS
TRAFFIC ENGINEERING AND SAFETY
SYSTEMS BRANCH

NC 801 at I-40 EB Ramp



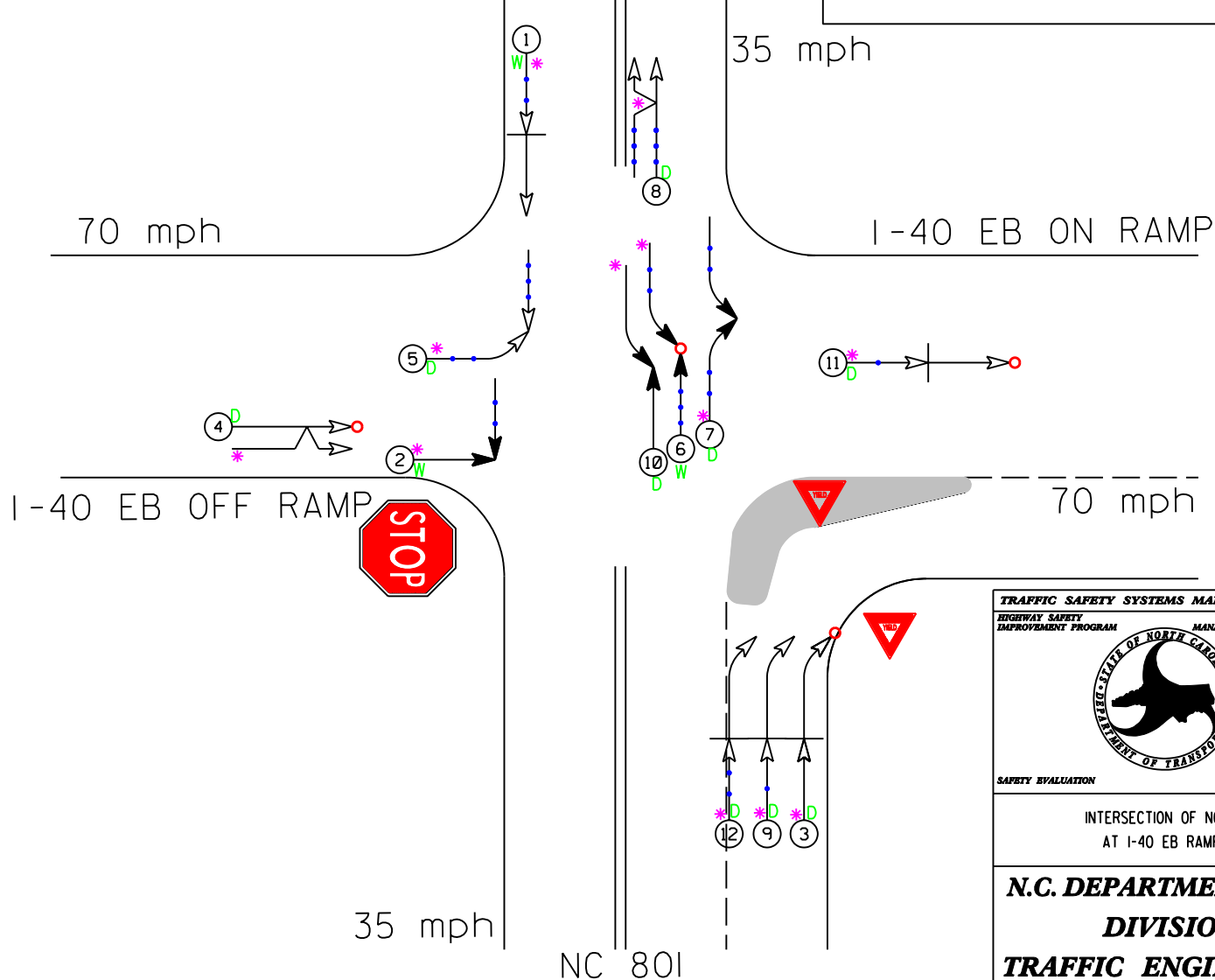
NC 801 AT I-40 EB RAMPS

DAVIE CO.

NOVEMBER 1, 1997 - DECEMBER 31, 2001

(4.17 YRS)

BEFORE PERIOD - TOTAL CRASHES



TRAFFIC SAFETY SYSTEMS MANAGEMENT UNIT

HIGHWAY SAFETY

IMPROVEMENT PROGRAM

SAFETY INFORMATION

MANAGEMENT AND SUPPORT



SAFETY EVALUATION

TRAFFIC SAFETY

INTERSECTION OF NC 801
AT I-40 EB RAMPS

COLLISION DIAGRAM

DIVISION: 9	REGION: TRIAD
STUDY PERIOD: 11/01/97 - 12/31/01	
ANALYSIS PREPARED BY: CLS	
DIAGRAM PREPARED BY: TSF	
DIAGRAM REVIEWED BY: CLS	
SCALE: NOT TO SCALE	
DATE: 09/04/2007	
LOG NUMBER: 200706083	
PAGE: 1 OF 1	

N.C. DEPARTMENT of TRANSPORTATION
DIVISION of HIGHWAYS
TRAFFIC ENGINEERING AND SAFETY
SYSTEMS BRANCH

NC 801 AT I-40 EB RAMPS

DAVIE CO.

JANUARY 1, 2003 - FEBRUARY 28, 2007

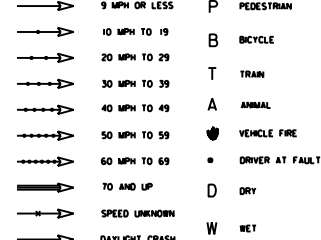
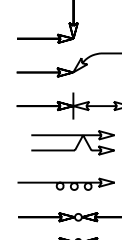
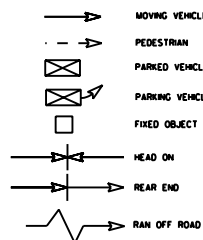
(4.17 YRS)

AFTER PERIOD - TOTAL CRASHES

NC 801

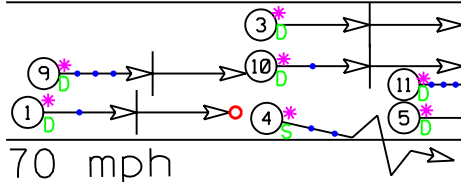
35 mph

LEGEND



I-40 EB OFF RAMP

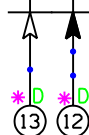
I-40 EB ON RAMP



35 mph

NC 801

NOTE:
OIL IN
ROAD



TRAFFIC SAFETY SYSTEMS MANAGEMENT UNIT	
HIGHWAY SAFETY IMPROVEMENT PROGRAM	SAFETY INFORMATION MANAGEMENT AND SUPPORT
SAFETY EVALUATION	
TRAFFIC SAFETY	
INTERSECTION OF NC 801 AT I-40 EB RAMPS	

COLLISION DIAGRAM	
DIVISION: 9	REGION: TRIAD
STUDY PERIOD: 01/01/03 - 02/28/07	
ANALYSIS PREPARED BY: CLS	
DIAGRAM PREPARED BY: TSF	
DIAGRAM REVIEWED BY: CLS	
SCALE:	NOT TO SCALE
DATE:	8/20/2006
LOG NUMBER:	200706083
PAGE:	1 OF 1

N.C. DEPARTMENT of TRANSPORTATION
DIVISION of HIGHWAYS
TRAFFIC ENGINEERING AND SAFETY
SYSTEMS BRANCH

Lake at Mountain



LAKE RD AT MOUNTAIN DR

BUNCOMBE CO.

NOVEMBER 1, 1997 - DECEMBER 31, 2001
(4.17 YRS)

BEFORE PERIOD - TOTAL CRASHES

SR 3437

35 mph



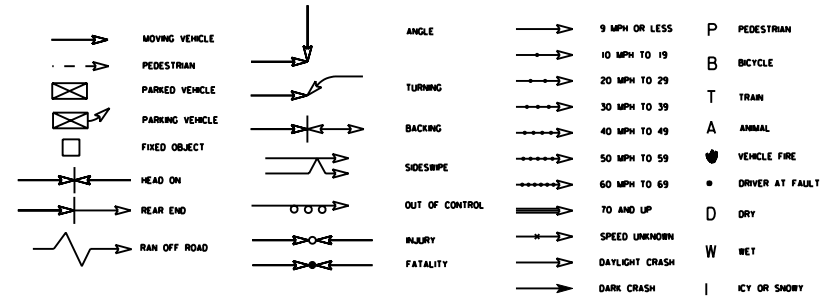
SR 3533
MOUNTAIN DR

35 mph

SR 3437
LAKE RD
CASE COVE RD

35 mph

LEGEND



TRAFFIC SAFETY SYSTEMS MANAGEMENT UNIT



SAFETY EVALUATION

TRAFFIC SAFETY

INTERSECTION OF SR 3533 MOUNTAIN DR.
AT SR 3437 LAKE RD

COLLISION DIAGRAM

DIVISION: 13 REGION: BLUE RIDGE

STUDY PERIOD: 11/01/97 - 12/31/01

ANALYSIS PREPARED BY: CLS

DIAGRAM PREPARED BY: TSF

DIAGRAM REVIEWED BY: CLS

SCALE: NOT TO SCALE

DATE: 08/31/2007

LOG NUMBER: 200706083

PAGE: 1 OF 1

N.C. DEPARTMENT of TRANSPORTATION
DIVISION of HIGHWAYS
TRAFFIC ENGINEERING AND SAFETY
SYSTEMS BRANCH

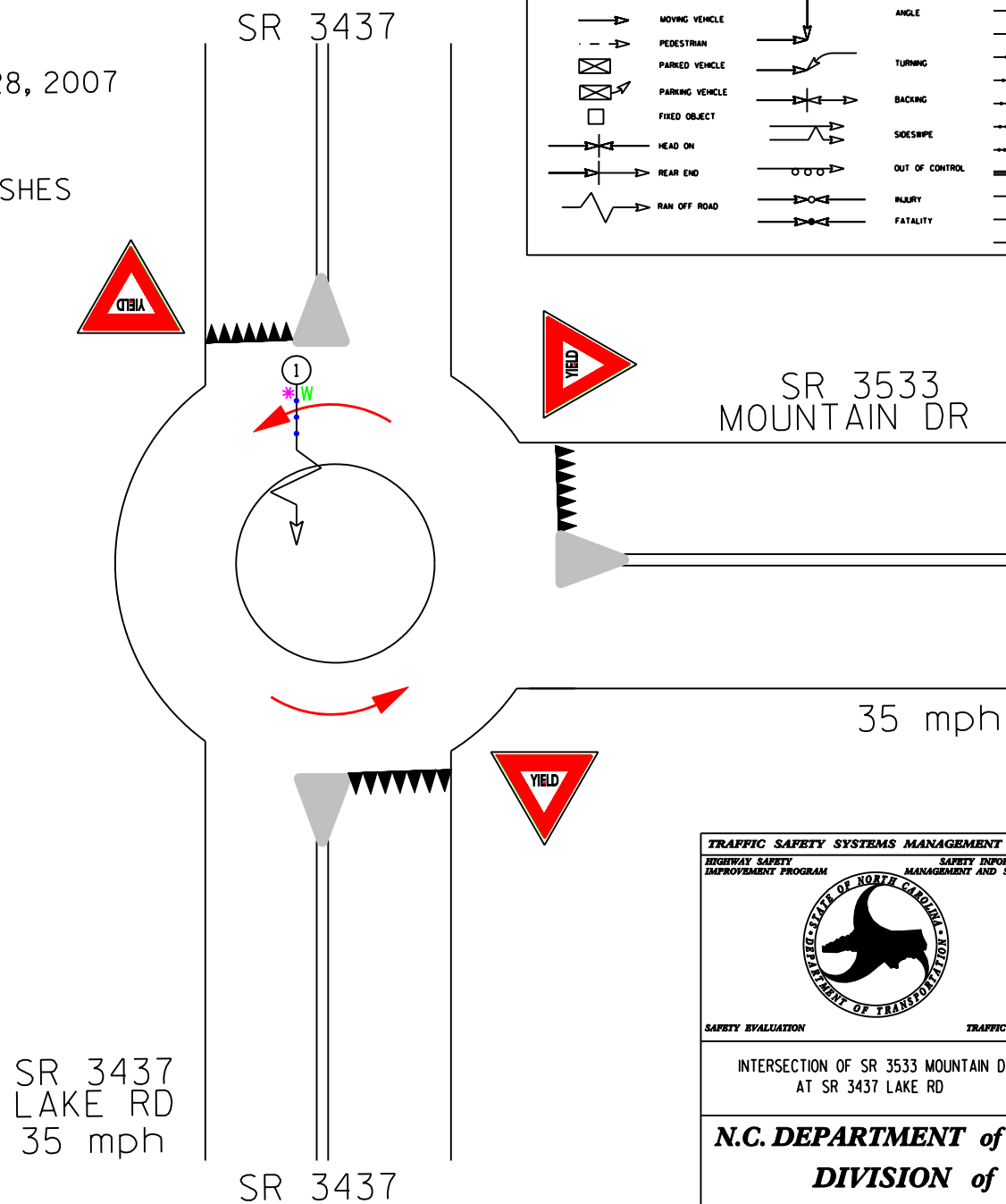
LAKE RD AT MOUNTAIN DR

BUNCOMBE CO.

JANUARY 1, 2003 - FEBRUARY 28, 2007

(4.17 YRS)

AFTER PERIOD - TOTAL CRASHES



LEGEND

	MOVING VEHICLE		ANGLE		9 MPH OR LESS		PEDESTRIAN
	PEDESTRIAN		TURNING		10 MPH TO 19		BICYCLE
	PARKED VEHICLE		BACKING		20 MPH TO 29		TRAIN
	PARKING VEHICLE		SIDESWIPE		30 MPH TO 39		ANIMAL
	FIXED OBJECT		OUT OF CONTROL		40 MPH TO 49		VEHICLE FIRE
	HEAD ON		INJURY		50 MPH TO 59		DRIVER AT FAULT
	REAR END		FATALITY		60 MPH TO 69		DRY
	RAN OFF ROAD		DAYLIGHT CRASH		70 AND UP		WET
			DARK CRASH		SPEED UNKNOWN		ICY OR SNOWY

TRAFFIC SAFETY SYSTEMS MANAGEMENT UNIT		COLLISION DIAGRAM	
HIGHWAY SAFETY IMPROVEMENT PROGRAM	SAFETY INFORMATION MANAGEMENT AND SUPPORT	DIVISION: 13	REGION: BLUE RIDGE
		STUDY PERIOD: 01/01/02 - 02/28/07	
		ANALYSIS PREPARED BY: CLS	
		DIAGRAM PREPARED BY: TSF	
		DIAGRAM REVIEWED BY: CLS	
SAFETY EVALUATION		TRAFFIC SAFETY	
INTERSECTION OF SR 3533 MOUNTAIN DR. AT SR 3437 LAKE RD		SCALE:	NOT TO SCALE
		DATE:	8/31/2007
		LOG NUMBER:	200706083
		PAGE:	1 OF 1
N.C. DEPARTMENT of TRANSPORTATION			
DIVISION of HIGHWAYS			
TRAFFIC ENGINEERING AND SAFETY			
SYSTEMS BRANCH			

GROUP 2

Styers Ferry at Utility



STYERS FERRY AT UTILITY

FORSYTH CO.

NOVEMBER 1, 1997 - DECEMBER 31, 2001
(4.17 YRS)

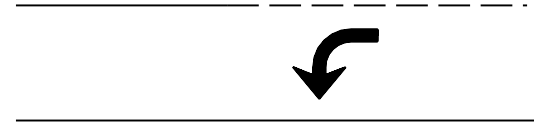
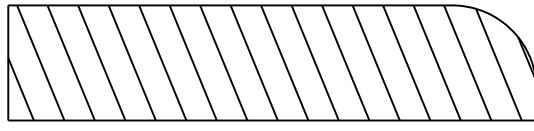
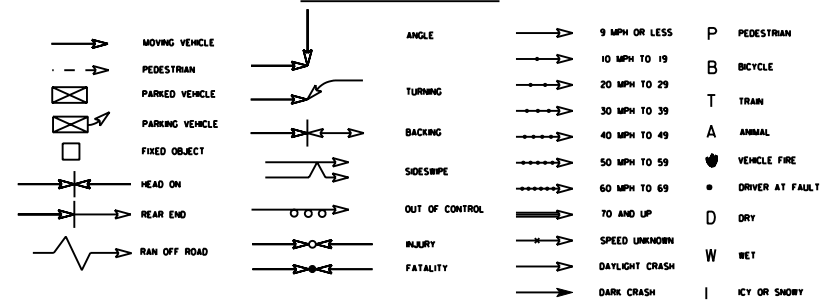
BEFORE PERIOD - TOTAL CRASHES

SHOPPING CENTER
ENTRANCE

UTILITY RD

SR 1100 STYERS FERRY RD

LEGEND



45 mph

45 mph

45 mph

SR 1100
STYERS FERRY RD

TRAFFIC SAFETY SYSTEMS MANAGEMENT UNIT	
HIGHWAY SAFETY IMPROVEMENT PROGRAM	SAFETY INFORMATION MANAGEMENT AND SUPPORT
SAFETY EVALUATION	TRAFFIC SAFETY
INTERSECTION OF SR 1100 STYERS FERRY AT UTILITY	

COLLISION DIAGRAM	
DIVISION: 9	REGION: TRIAD
STUDY PERIOD: 11/01/03 - 12/31/2001	
ANALYSIS PREPARED BY: CLS	
DIAGRAM PREPARED BY: TSF	
DIAGRAM REVIEWED BY: CLS	
SCALE:	NOT TO SCALE
DATE:	08/29/2007
LOG NUMBER:	200706083
PAGE:	1 OF 1

N.C. DEPARTMENT of TRANSPORTATION
DIVISION of HIGHWAYS
TRAFFIC ENGINEERING AND SAFETY
SYSTEMS BRANCH

STYERS FERRY AT UTILITY

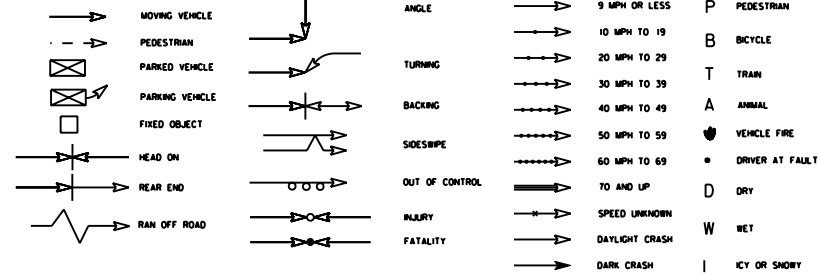
FORSYTH CO.

JANUARY 1, 2003 - FEBRUARY 28, 2007
(4.17 YRS)

AFTER PERIOD - TOTAL CRASHES

SHOPPING CENTER
ENTRANCE

LEGEND



SR 1100 STYERS FERRY RD


UTILITY RD

45 mph

45 mph

SR 1100
STYERS FERRY RD

45 mph

TRAFFIC SAFETY SYSTEMS MANAGEMENT UNIT		COLLISION DIAGRAM	
HIGHWAY SAFETY IMPROVEMENT PROGRAM	SAFETY INFORMATION MANAGEMENT AND SUPPORT	DIVISION: 9	REGION: TRIAD
		STUDY PERIOD: 01/01/03 - 02/28/07	
		ANALYSIS PREPARED BY: CLS	
		DIAGRAM PREPARED BY: TSF	
		DIAGRAM REVIEWED BY: CLS	
SAFETY EVALUATION		TRAFFIC SAFETY	SCALE: NOT TO SCALE
INTERSECTION OF SR 1100 STYERS FERRY AT UTILITY		DATE: 8/30/2007	LOG NUMBER: 200706083
		PAGE: 1	OF 1

N.C. DEPARTMENT of TRANSPORTATION
DIVISION of HIGHWAYS
TRAFFIC ENGINEERING AND SAFETY
SYSTEMS BRANCH

Williams Road at US 421 SB Ramps

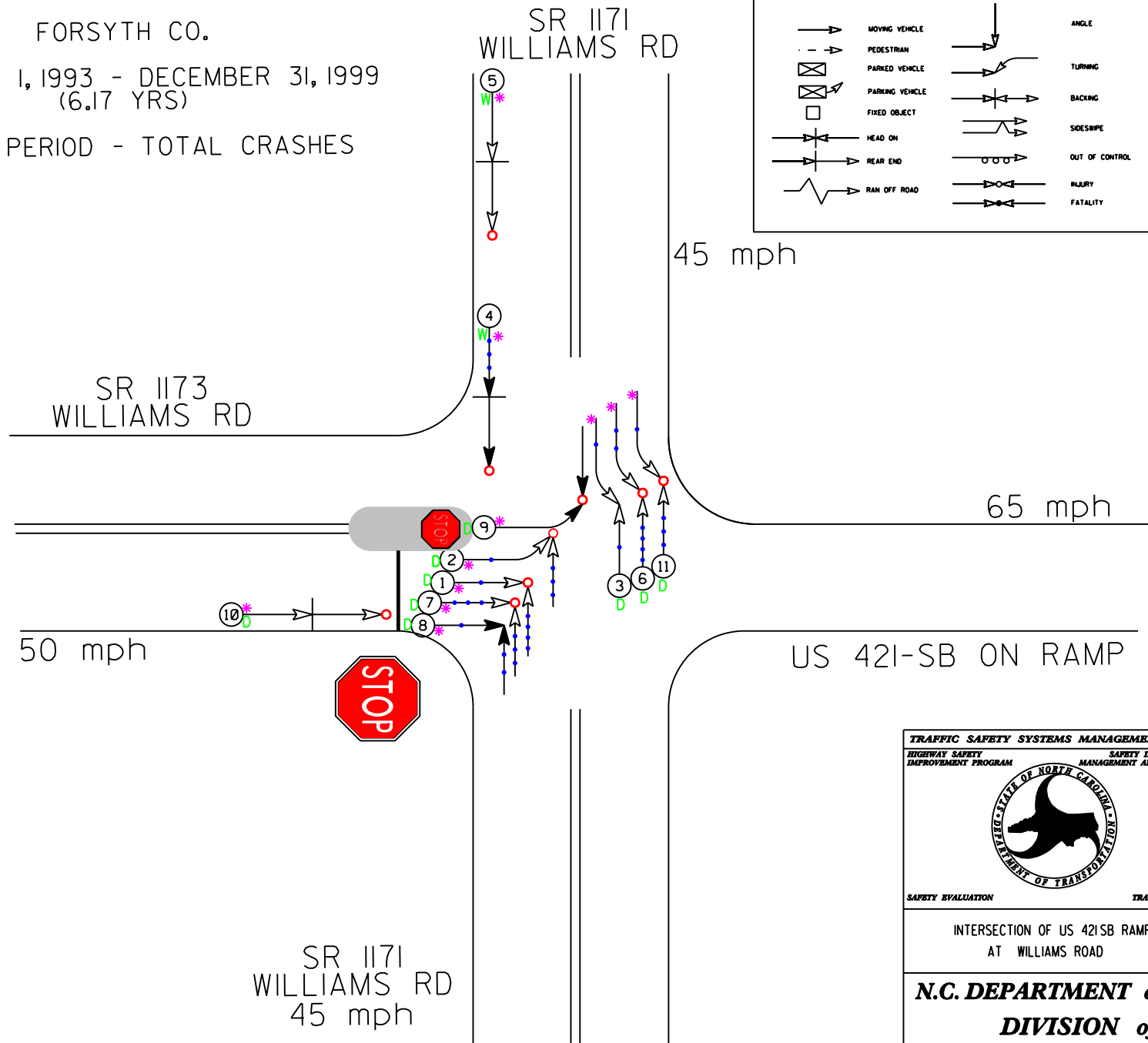


WILLIAMS RD AT US 42I-SB RAMPS

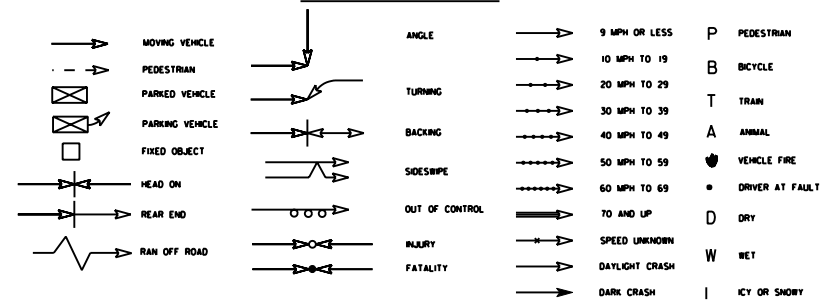
FORSYTH CO.

NOVEMBER 1, 1993 - DECEMBER 31, 1999
(6.17 YRS)

BEFORE PERIOD - TOTAL CRASHES



LEGEND



TRAFFIC SAFETY SYSTEMS MANAGEMENT UNIT



SAFETY EVALUATION

INTERSECTION OF US 42I-SB RAMPS
AT WILLIAMS ROAD

COLLISION DIAGRAM

DIVISION: 9	REGION: TRIAD
STUDY PERIOD: 11/01/93 - 12/31/99	
ANALYSIS PREPARED BY: CLS	
DIAGRAM PREPARED BY: TSF	
DIAGRAM REVIEWED BY: CLS	
SCALE:	
DATE:	08/28/2007
LOG NUMBER:	200706083
PAGE:	1 OF 1

N.C. DEPARTMENT of TRANSPORTATION
DIVISION of HIGHWAYS
TRAFFIC ENGINEERING AND SAFETY
SYSTEMS BRANCH

WILLIAMS RD AT US 42I-SB RAMPS

FORSYTH CO.

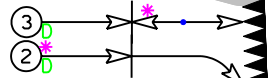
JANUARY 1, 2001 - FEBRUARY 28, 2007
(6.17 YRS)

AFTER PERIOD - TOTAL CRASHES



SR 1173
WILLIAMS RD

50 mph

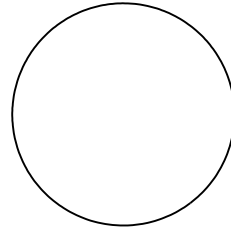


SR 1171
WILLIAMS RD
45 mph



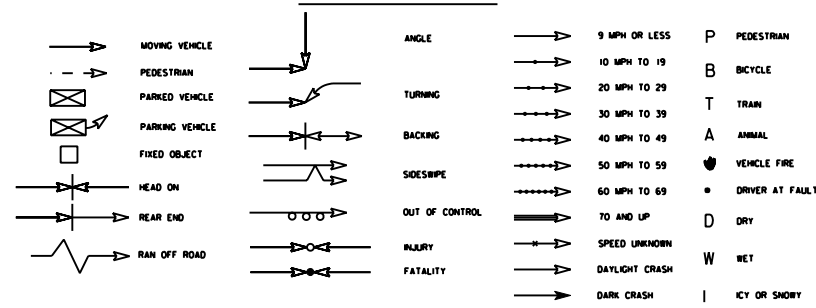
SR 1171
WILLIAMS RD

45 mph



US 42I-SB ON RAMP

LEGEND



TRAFFIC SAFETY SYSTEMS MANAGEMENT UNIT		COLLISION DIAGRAM	
HIGHWAY SAFETY IMPROVEMENT PROGRAM	SAFETY INFORMATION MANAGEMENT AND SUPPORT	DIVISION: 9	REGION: TRIAD
		STUDY PERIOD: 01/01/01 - 02/28/07	
		ANALYSIS PREPARED BY: CLS	
		DIAGRAM PREPARED BY: TSF	
		DIAGRAM REVIEWED BY: CLS	
SAFETY EVALUATION		TRAFFIC SAFETY	
INTERSECTION OF US 42I-SB RAMPS AT WILLIAMS ROAD		SCALE: NOT TO SCALE	
		DATE: 8/28/2007	
		LOG NUMBER: 200706083	
		PAGE: 1 OF 1	
N.C. DEPARTMENT of TRANSPORTATION DIVISION of HIGHWAYS TRAFFIC ENGINEERING AND SAFETY SYSTEMS BRANCH			

Williams at US 421 NB Ramps



US 42I-NB RAMPS AT WILLIAMS RD

FORSYTH CO.

JANUARY 1, 2004 - FEBRUARY 28, 2007
(3.17 YRS)

AFTER PERIOD - TOTAL CRASHES



US 42I-NB/WB ON RAMP

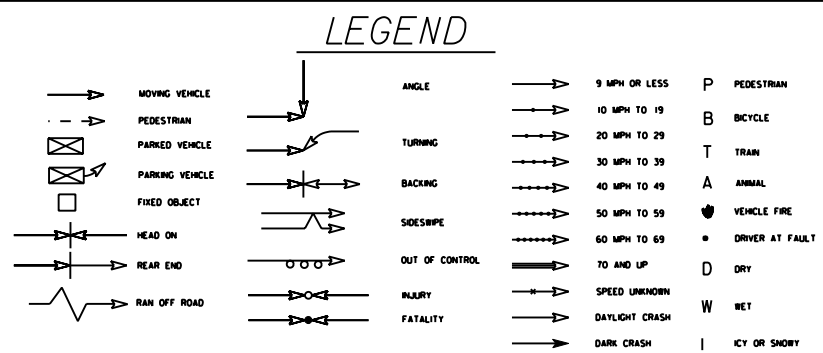
65 mph

SR 1171
WILLIAMS RD

SR 1171
WILLIAMS RD
45 mph

US 42I-NB/WB OFF RAMP

65 mph



TRAFFIC SAFETY SYSTEMS MANAGEMENT UNIT

HIGHWAY SAFETY IMPROVEMENT PROGRAM SAFETY INFORMATION MANAGEMENT AND SUPPORT



SAFETY EVALUATION

TRAFFIC SAFETY

INTERSECTION OF US 421NB/WB RAMPS
AT WILLIAMS ROAD

COLLISION DIAGRAM

DIVISION: 9 REGION: TRIAD

STUDY PERIOD: 01/01/04 - 02/28/07

ANALYSIS PREPARED BY: CLS

DIAGRAM PREPARED BY: TSF

DIAGRAM REVIEWED BY: CLS

SCALE: NOT TO SCALE

DATE: 8/28/2007

LOG NUMBER: 200706083

PAGE: 1 OF 1

N.C. DEPARTMENT of TRANSPORTATION
DIVISION of HIGHWAYS
TRAFFIC ENGINEERING AND SAFETY
SYSTEMS BRANCH

NC 751 at Old Erwin



NC 751 AT OLD ERWIN RD

DURHAM CO.

NOVEMBER 1, 1999 - DECEMBER 31, 2002
(3.17 YRS)

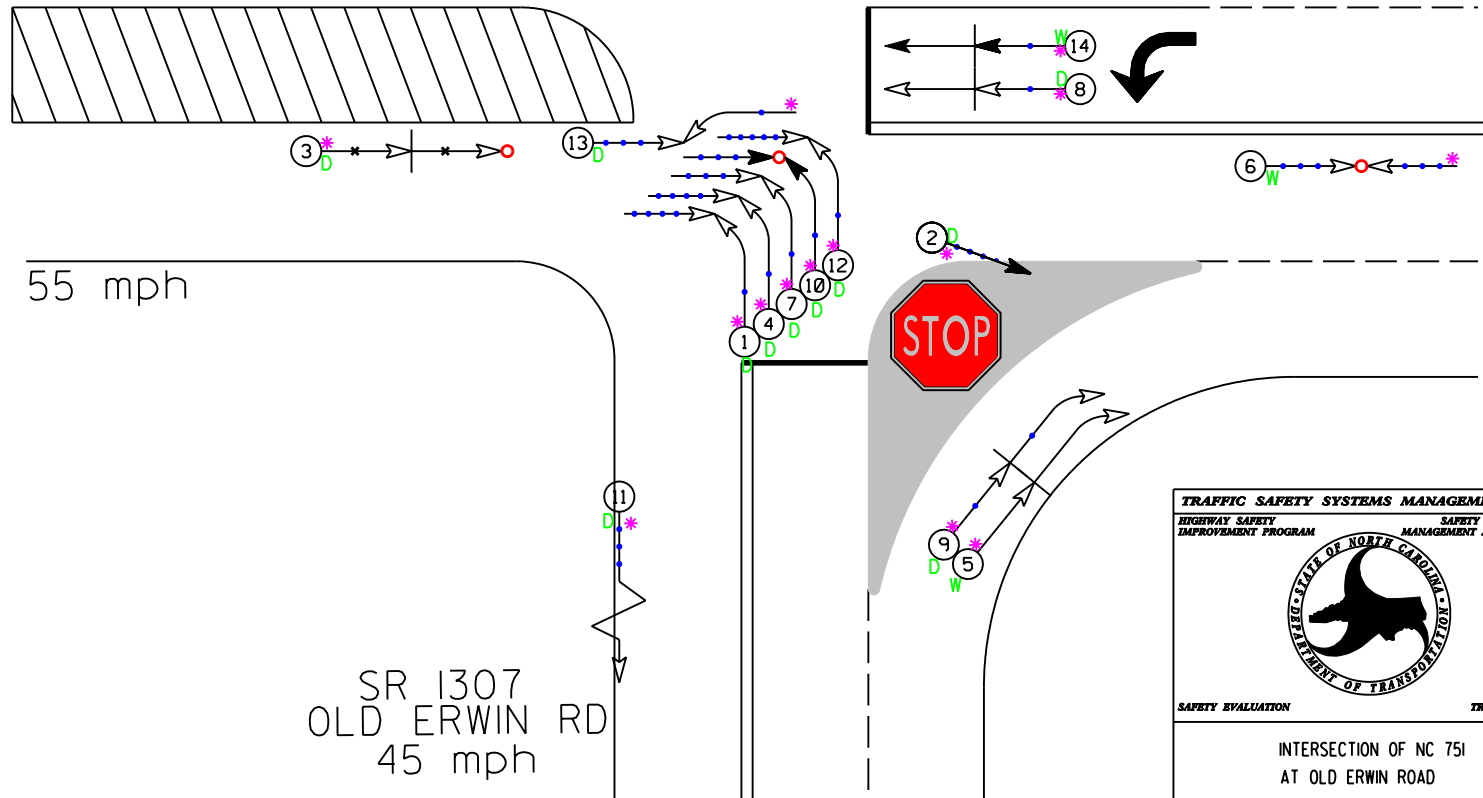
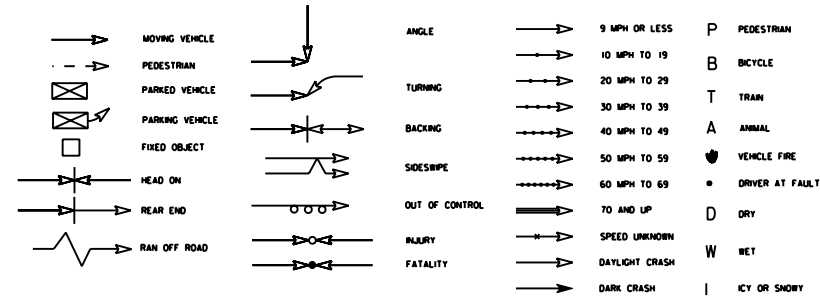
BEFORE PERIOD - TOTAL CRASHES

SERVICE ROAD
FOR
DUKE FOREST

NC 751

NC 751

LEGEND



TRAFFIC SAFETY SYSTEMS MANAGEMENT UNIT	
HIGHWAY SAFETY IMPROVEMENT PROGRAM	SAFETY INFORMATION MANAGEMENT AND SUPPORT
SAFETY EVALUATION	TRAFFIC SAFETY
INTERSECTION OF NC 751 AT OLD ERWIN ROAD	

COLLISION DIAGRAM	
DIVISION: 5	REGION: CAPITAL
STUDY PERIOD: 11/01/99 - 12/31/2002	
ANALYSIS PREPARED BY: CLS	
DIAGRAM PREPARED BY: TSF	
DIAGRAM REVIEWED BY: CLS	
SCALE:	NOT TO SCALE
DATE:	08/29/2007
LOG NUMBER:	200706083
PAGE:	1 OF 1

N.C. DEPARTMENT of TRANSPORTATION
DIVISION of HIGHWAYS
TRAFFIC ENGINEERING AND SAFETY
SYSTEMS BRANCH

DURHAM CO.

AFTER PERIOD - TOTAL CRASHES

SERVICE ROAD
FOR
DUKE FOREST

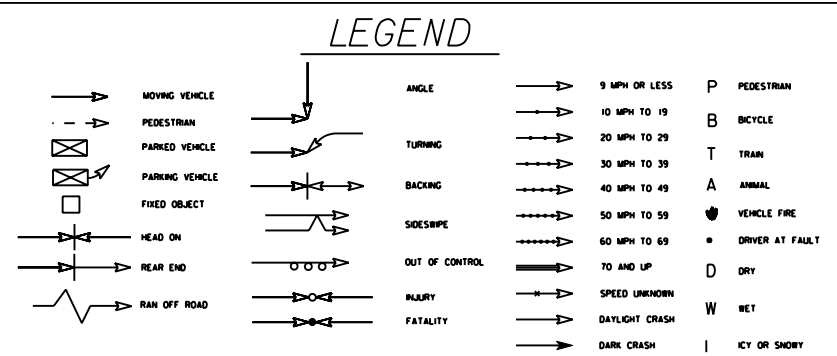
NC 751


55 mph

55 mph

SR 1307
OLD ERWIN RD
45 mph

NC 751



TRAFFIC SAFETY SYSTEMS MANAGEMENT UNIT HIGHWAY SAFETY IMPROVEMENT PROGRAM SAFETY INFORMATION MANAGEMENT AND SUPPORT		COLLISION DIAGRAM	
		DIVISION: 5	REGION: CAPITAL
		STUDY PERIOD: 01/01/04 - 02/28/07	
		ANALYSIS PREPARED BY: CLS	
		DIAGRAM PREPARED BY: TSF	
		DIAGRAM REVIEWED BY: CLS	
SAFETY EVALUATION		TRAFFIC SAFETY	
INTERSECTION OF NC 751 AT OLD ERWIN ROAD		SCALE: NOT TO SCALE DATE: 8/24/2007 LOG NUMBER: 200706083 PAGE: 1 OF 1	

Fraternity Church at Hope Church



FRATERNITY CHURCH AT HOPE CHURCH

FORSYTH CO.

NOVEMBER 1, 1991 - DECEMBER 31, 1998
(7.17 YRS)

BEFORE PERIOD - TOTAL CRASHES

SR 2979
HOPE CHURCH RD

SR 2991
FRATERNITY CHURCH RD

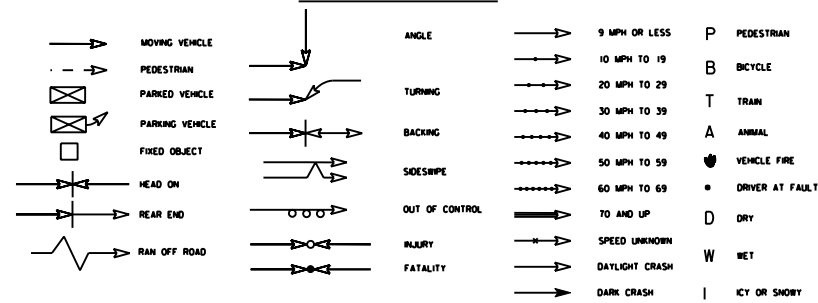


55 mph

55 mph

SR 2991
FRATERNITY CHURCH RD

LEGEND



TRAFFIC SAFETY SYSTEMS MANAGEMENT UNIT

HIGHWAY SAFETY IMPROVEMENT PROGRAM SAFETY INFORMATION MANAGEMENT AND SUPPORT



SAFETY EVALUATION TRAFFIC SAFETY

INTERSECTION OF FRATERNITY CH ROAD
AT HOPE CH ROAD

COLLISION DIAGRAM

DIVISION: 9 REGION: TRIAD

STUDY PERIOD: 11/01/91 - 12/31/1998

ANALYSIS PREPARED BY: CLS

DIAGRAM PREPARED BY: TSF

DIAGRAM REVIEWED BY: CLS

SCALE: NOT TO SCALE

DATE: 08/29/2007

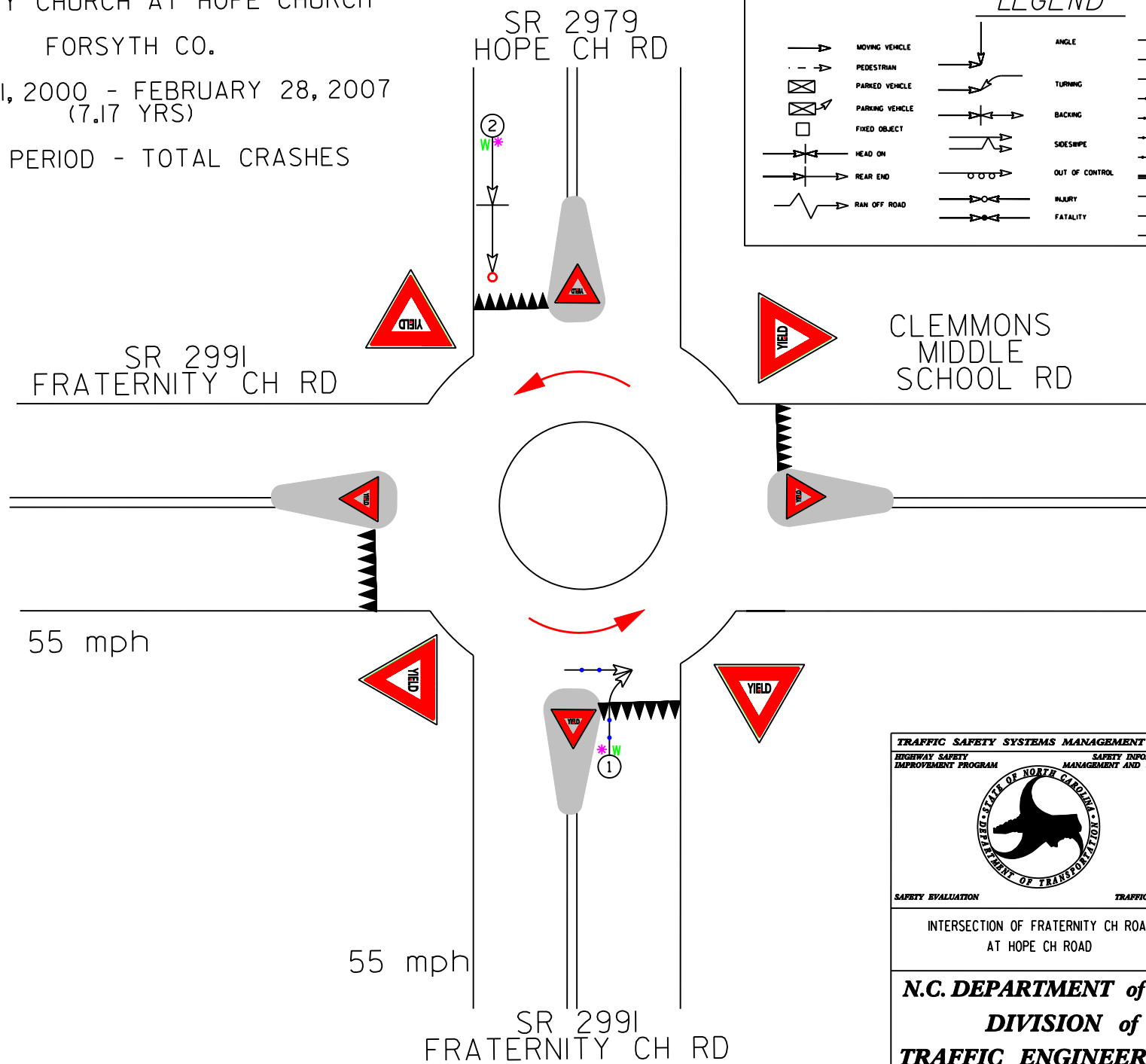
LOG NUMBER: 200706083


PAGE: 1 OF 1

N.C. DEPARTMENT of TRANSPORTATION
DIVISION of HIGHWAYS
TRAFFIC ENGINEERING AND SAFETY
SYSTEMS BRANCH

FORSYTH CO.

AFTER PERIOD - TOTAL CRASHES



TRAFFIC SAFETY SYSTEMS MANAGEMENT UNIT		COLLISION DIAGRAM	
HIGHWAY SAFETY IMPROVEMENT PROGRAM		SAFETY INFORMATION MANAGEMENT AND SUPPORT	
		<div style="border: 1px solid black; display: flex; justify-content: space-between;"> DIVISION: 9 REGION: TRIAD </div>	
<p>INTERSECTION OF FRATERNITY CH ROAD AT HOPE CH ROAD</p>		STUDY PERIOD: 01/01/00 - 02/28/07	
		ANALYSIS PREPARED BY: CLS	
		DIAGRAM PREPARED BY: TSF	
		DIAGRAM REVIEWED BY: CLS	
		SCALE: NOT TO SCALE	
		DATE: 8/30/2007	
		LOG NUMBER: 200706083	
		PAGE: 1 OF 1	
<p><i>N.C. DEPARTMENT of TRANSPORTATION</i></p> <p><i>DIVISION of HIGHWAYS</i></p> <p><i>TRAFFIC ENGINEERING AND SAFETY</i></p> <p><i>SYSTEMS BRANCH</i></p>			

Yellowbanks at Haymeadow – No Photos Available

YELLOW BANKS AT HAYMEADOW

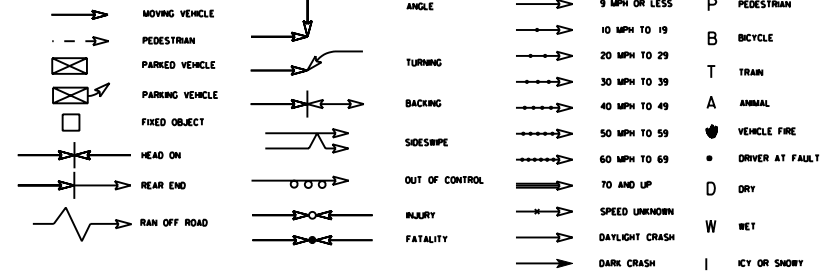
WILKES CO.

NOVEMBER 1, 1997 - DECEMBER 31, 2001
(4.17 YRS)

BEFORE PERIOD - TOTAL CRASHES

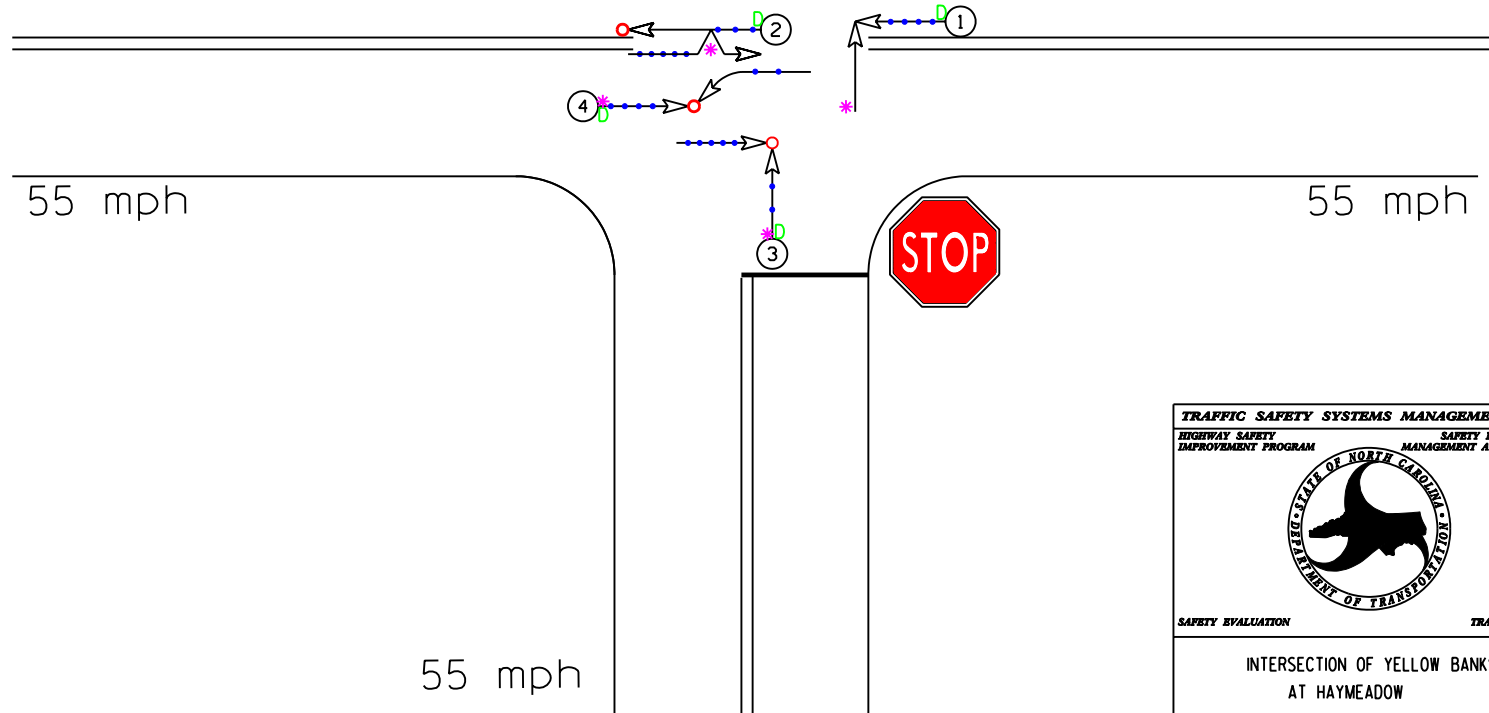
SR 1716
HAYMEADOW RD
55 mph

LEGEND



SR 1716 YELLOW BANKS RD

SR 1713 YELLOW BANKS RD



TRAFFIC SAFETY SYSTEMS MANAGEMENT UNIT		COLLISION DIAGRAM	
HIGHWAY SAFETY IMPROVEMENT PROGRAM	SAFETY INFORMATION MANAGEMENT AND SUPPORT	DIVISION: II	REGION: HIGH
		STUDY PERIOD: 11/01/97 - 12/31/2001	
		ANALYSIS PREPARED BY: CLS	
		DIAGRAM PREPARED BY: TSF	
		DIAGRAM REVIEWED BY: CLS	
SAFETY EVALUATION	TRAFFIC SAFETY	SCALE:	NOT TO SCALE
INTERSECTION OF YELLOW BANKS AT HAYMEADOW		DATE:	08/29/2007
		LOG NUMBER:	200706083
		PAGE:	1 OF 1
N.C. DEPARTMENT of TRANSPORTATION DIVISION of HIGHWAYS TRAFFIC ENGINEERING AND SAFETY SYSTEMS BRANCH			

YELLOWBANKS AT HAYMEADOW

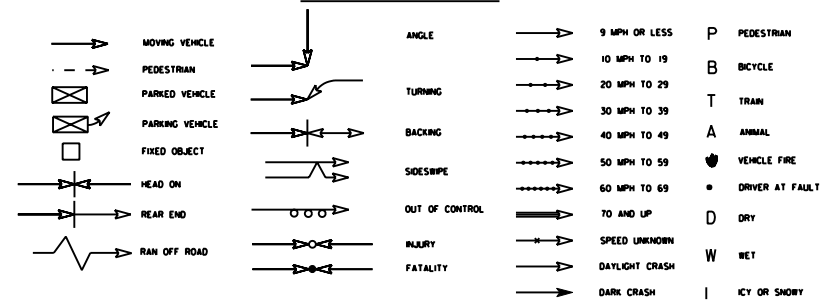
WILKES CO.

JANUARY 1, 2003 - FEBRUARY 28, 2007
(4.17 YRS)

AFTER PERIOD - TOTAL CRASHES

SR 1716
HAYMEADOW RD
55 mph

LEGEND



SR 1716 YELLOW BANKS RD


SR 1713 YELLOW BANKS RD

55 mph

55 mph

55 mph

SR 1707
HAYMEADOW CHURCH RD

TRAFFIC SAFETY SYSTEMS MANAGEMENT UNIT		COLLISION DIAGRAM	
HIGHWAY SAFETY IMPROVEMENT PROGRAM	SAFETY INFORMATION MANAGEMENT AND SUPPORT	DIVISION: II	REGION: HIGH
		STUDY PERIOD: 01/01/03 - 02/28/07	
		ANALYSIS PREPARED BY: CLS	
		DIAGRAM PREPARED BY: TSF	
		DIAGRAM REVIEWED BY: CLS	
SAFETY EVALUATION	TRAFFIC SAFETY	SCALE:	NOT TO SCALE
INTERSECTION OF YELLOW BANKS AT HAYMEADOW		DATE:	8/30/2007
		LOG NUMBER:	200706083
		PAGE:	1 OF 1
N.C. DEPARTMENT of TRANSPORTATION DIVISION of HIGHWAYS TRAFFIC ENGINEERING AND SAFETY SYSTEMS BRANCH			

GROUP 3

Ninth at Davidson

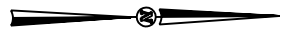


NINTH ST AT DAVIDSON ST

MECKLENBURG CO.

NOVEMBER 1, 1993 - DECEMBER 31, 1999
(6.17 YRS)

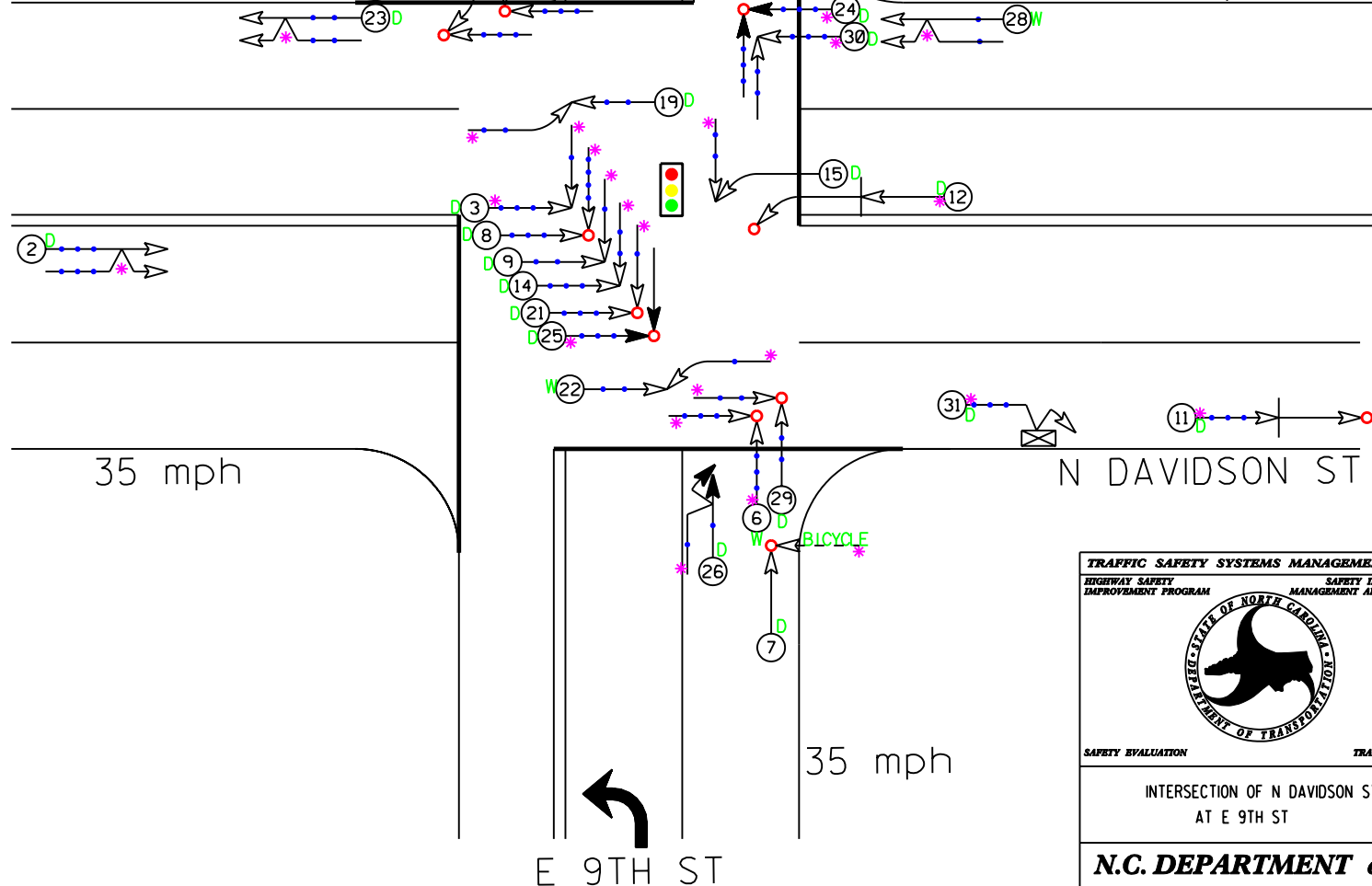
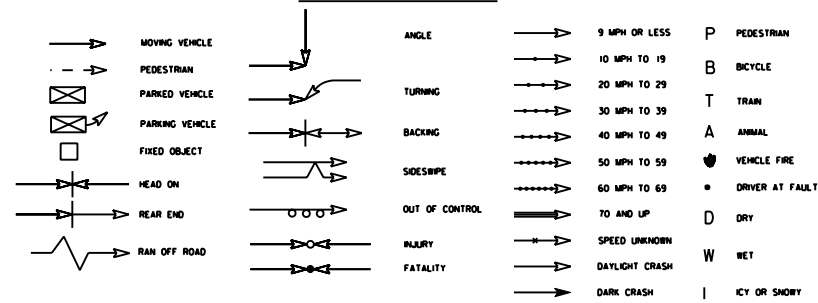
BEFORE PERIOD - TOTAL CRASHES



N DAVIDSON ST

E 9TH ST

LEGEND



TRAFFIC SAFETY SYSTEMS MANAGEMENT UNIT
HIGHWAY SAFETY IMPROVEMENT PROGRAM



SAFETY EVALUATION

TRAFFIC SAFETY

INTERSECTION OF N DAVIDSON ST
AT E 9TH ST

COLLISION DIAGRAM

DIVISION: 10 REGION: METRO

STUDY PERIOD: 11/01/93 - 12/31/1999

ANALYSIS PREPARED BY: CLS

DIAGRAM PREPARED BY: TSF

DIAGRAM REVIEWED BY: CLS

SCALE: NOT TO SCALE

DATE: 09/05/2007

LOG NUMBER: 200706083

PAGE: 1 OF 1

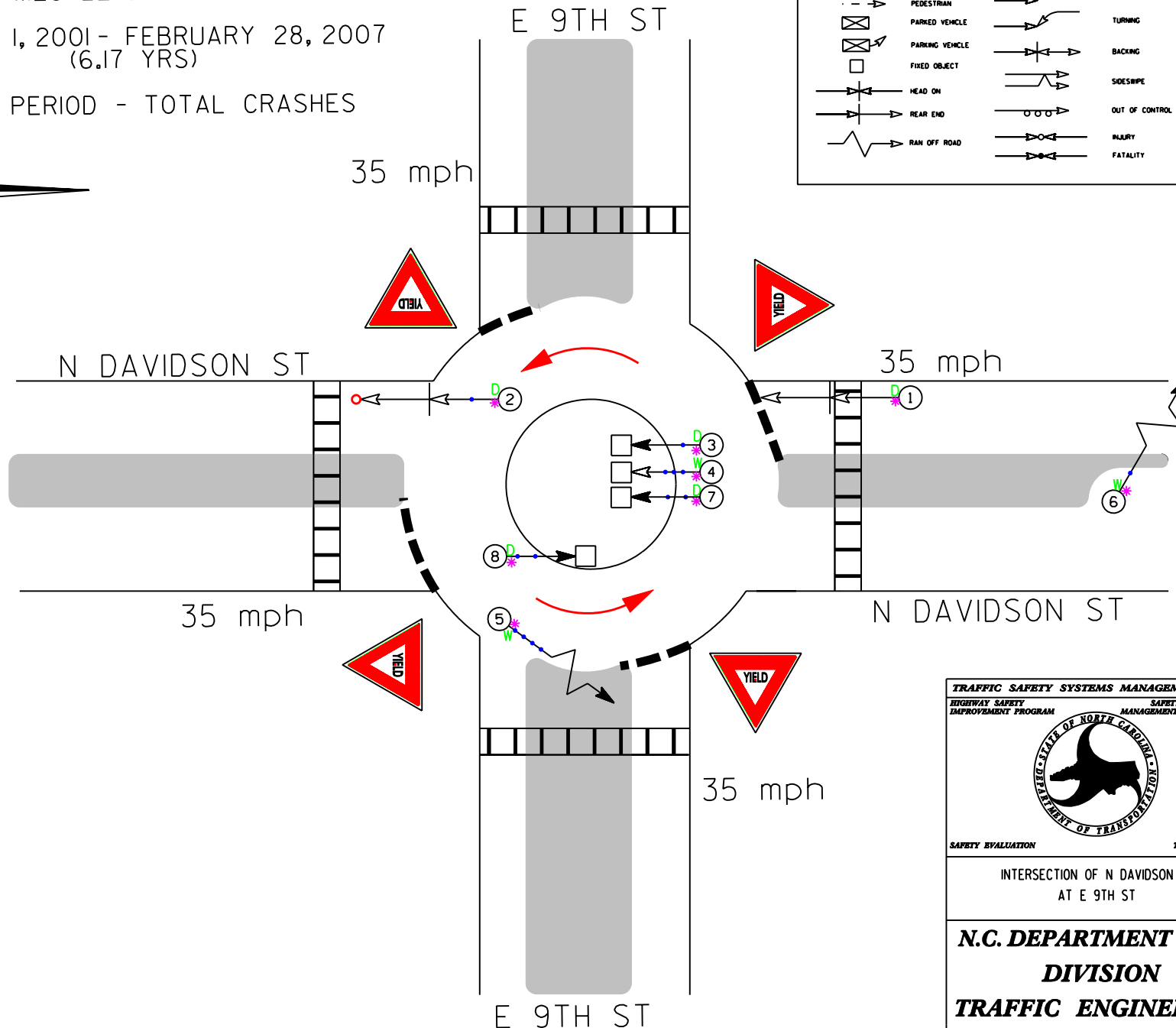
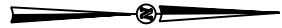
N.C. DEPARTMENT of TRANSPORTATION
DIVISION of HIGHWAYS
TRAFFIC ENGINEERING AND SAFETY
SYSTEMS BRANCH

NINTH ST AT DAVIDSON ST

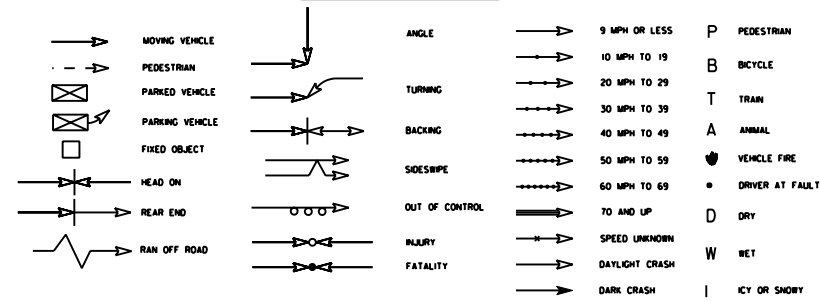
MECKLENBURG CO.

JANUARY 1, 2001 - FEBRUARY 28, 2007
(6.17 YRS)

AFTER PERIOD - TOTAL CRASHES



LEGEND



TRAFFIC SAFETY SYSTEMS MANAGEMENT UNIT

HIGHWAY SAFETY IMPROVEMENT PROGRAM SAFETY INFORMATION MANAGEMENT AND SUPPORT



SAFETY EVALUATION TRAFFIC SAFETY

INTERSECTION OF N DAVIDSON ST
AT E 9TH ST

COLLISION DIAGRAM

DIVISION: 10	REGION: METRO
STUDY PERIOD: 01/01/01 - 02/28/07	
ANALYSIS PREPARED BY: CLS	
DIAGRAM PREPARED BY: TSF	
DIAGRAM REVIEWED BY: CLS	
SCALE:	NOT TO SCALE
DATE:	9/5/2008
LOG NUMBER:	200706083
PAGE:	1 OF 1

N.C. DEPARTMENT of TRANSPORTATION
DIVISION of HIGHWAYS
TRAFFIC ENGINEERING AND SAFETY
SYSTEMS BRANCH