

### GENERAL NOTES

(1) THE FOLLOWING OPTIONS MAY BE USED AS THE FIRST ADVANCE WARNING THE MOTORISTS SEE:

- A. TRUCK MOUNTED ADVANCE WARNING SIGNS
- B. MOVING CHANGEABLE MESSAGE SIGN (CMS)
- C. GROUND MOUNTED ADVANCE WARNING SIGN (MUST USE "NEXT 10 MILES" AND MAKE CIRCLE TO PICK UP SIGNS)
- D. STATIONARY CHANGEABLE MESSAGE SIGN (CMS) (MUST USE "NEXT 10 MILES" AND MAKE CIRCLE TO PICK UP CMS)

(2) TOTAL DISTANCE BETWEEN FIRST AND LAST VEHICLE IN CARAVAN SHOULD BE APPROXIMATELY ONE (1) MILE IN LENGTH.

(3) IF USING GROUND MOUNTED ADVANCE WARNING SIGNS OR STATIONARY CMS, THE TOTAL DISTANCE BETWEEN THE FIRST ADVANCE WARNING SIGN OR CMS AND APPLICATION VEHICLE SHOULD NOT EXCEED TO MILES AND SIGN W21-38SP SHOULD READ "MACHINERY IN ROAD NEXT TO MILES".

(4) SIGNS ON VEHICLES SHOULD BE MOUNTED A MINIMUM OF ONE (1) FOOT FROM THE GROUND AND SHOULD NOT BLOCK THE MOTORIST'S SIGHT OF THE FLASHING ARROW PANEL AND/OR LIGHT BAR.

(5) SIGN W20-21 SHOULD BE PLACED ON BACK OF PROTECTION VEHICLE AND SIGN W20-10 ON BACK OF ADVANCE WARNING VEHICLE IN MULTILANE DIVIDED TRAFFIC SO VEHICLE APPROACHING FROM REAR ARE NOTIFIED OF OPERATION.

(6) RADIO COMMUNICATION BETWEEN VEHICLES IS RECOMMENDED.

(7) USE A LIGHT BAR OR ROTATING BEACON ON THE ADVANCE WARNING VEHICLES.

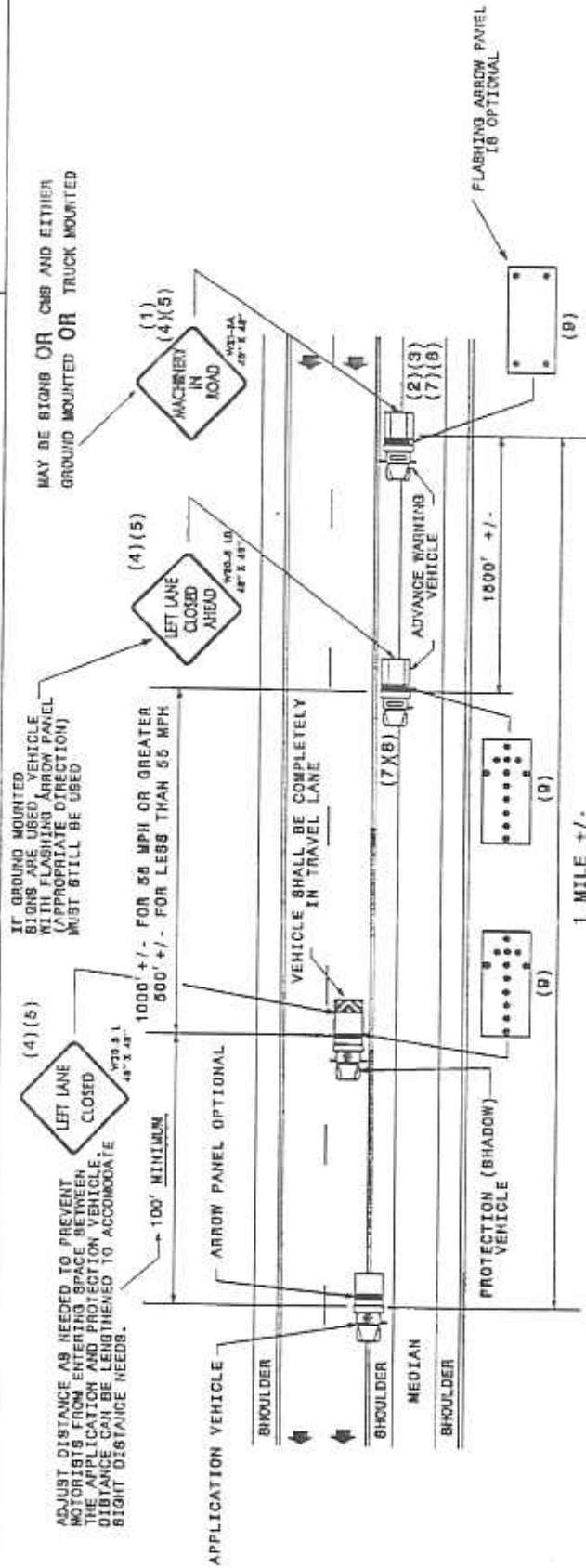
(8) USE OF CMS'S ARE OPTIONAL WITH ADVANCED WARNING VEHICLES.

(9) USE A TYPE "B" FLASHING ARROW PANEL.

PANEL TYPE     MTH. SIZE  
 B                    60"X30"

### LEGEND

- PORTABLE SIGN
- DIRECTION OF TRAFFIC FLOW
- APPLICATION VEHICLE WITH ROTATING BEACON
- PROTECTION VEHICLE WITH TRUCK MOUNTED IMPACT ATTENUATOR (TRIA) AND ROTATING BEACON (SEE ROADWAY STANDARD NO. 118B-01)
- ADVANCE WARNING VEHICLE WITH "B" FLASHING ARROW PANEL, TYPE "B"
- FLASHING ARROW PANEL, TYPE "B"
- FLASHING ARROW PANEL, TYPE "B"
- APPROPRIATE DIRECTION INDICATED



## MOVING OPERATION CARAVAN

(OPERATIONS TRAVELING 3 MPH OR FASTER)

SPRAYING INTERSTATE & HIGH VOLUME MULTILANE DIVIDED ROADWAYS  
 IN MEDIAN AND ON RIGHT SIDE W/PAVED SHOULDERS LESS THAN 10' WIDE

### GENERAL NOTES

(1) THE FOLLOWING OPTIONS MAY BE USED FOR THE FIRST ADVANCE WARNING THE MOTORISTS SEE:

- A. TRUCK MOUNTED ADVANCE WARNING SIGNS
- B. MOVING CHANGEABLE MESSAGE SIGN (CMS)
- C. GROUND MOUNTED ADVANCE WARNING SIGNS (MUST USE 'NEXT 10 MILES' AND MAKE CIRCLE TO PICK UP SIGNS)
- D. STATIONARY CHANGEABLE MESSAGE SIGN (CMS) (MUST USE 'NEXT 10 MILES' AND MAKE CIRCLE TO PICK UP CMS)

(2) TOTAL DISTANCE BETWEEN FIRST AND LAST VEHICLE IN CARAVAN SHOULD BE APPROXIMATELY ONE (1) MILE IN LENGTH.

(3) IF USING GROUND MOUNTED ADVANCE WARNING SIGNS OR STATIONARY CMS THE TOTAL DISTANCE BETWEEN THE FIRST ADVANCE WARNING SIGN OR CMS AND APPLICATION VEHICLE SHOULD NOT EXCEED 10 MILES AND SIGN W21-6CSP SHOULD READ 'SHOULDER CLOSED NEXT 10 MILES'.

(4) SIGNS ON VEHICLES SHOULD BE MOUNTED A MINIMUM OF ONE (1) FOOT FROM THE GROUND AND SHOULD NOT BLOCK THE MOTORIST'S SIGHT OF THE FLASHING ARROW PANEL AND/OR LIGHT BAR.

(5) SIGN W21-58BP SHOULD BE PLACED ON BACK OF PROTECTION VEHICLE AND SIGN W21-6ASP ON BACK OF ADVANCE WARNING VEHICLE IN MULTILANE DIVIDED TRAFFIC 80 VEHICLES APPROACHING FROM REAR ARE NOTIFIED OF OPERATION.

(6) RADIO COMMUNICATION BETWEEN VEHICLES IS RECOMMENDED.

(7) USE A LIGHT BAR OR ROTATING BEACON ON THE ADVANCE WARNING VEHICLES.

(8) USE OF CMS'S ARE OPTIONAL WITH ADVANCED WARNING VEHICLES.

(9) USE A TYPE "B" FLASHING ARROW PANEL.

| PANEL TYPE | MIN. SIZE |
|------------|-----------|
| B          | 90"X30"   |

### LEGEND

PORTABLE SIGN

DIRECTION OF TRAFFIC FLOW

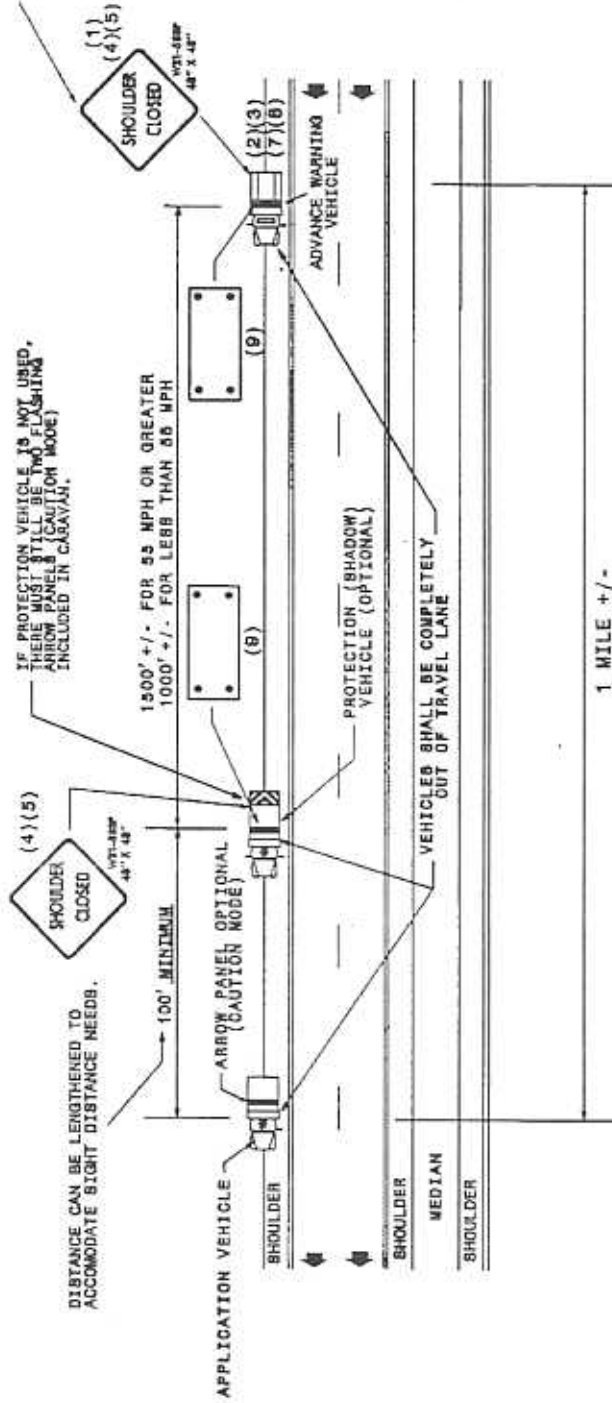
APPLICATION VEHICLE WITH ROTATING BEACON

PROTECTION VEHICLE WITH TRUCK MOUNTED IMPACT ATTENUATOR (TMIA) AND ROTATING BEACON (SEE ROADWAY STANDARD NO. 1186.01)

ADVANCE WARNING VEHICLE WITH PICKUP TRUCK WITH MOUNTED ALON

FLASHING ARROW PANEL, TYPE "B" CAUTION MODE

MAY BE SIGNS OR CMS BUT CAN ONLY BE GROUND MOUNTED IF ADVANCE WARNING VEHICLE WITH FLASHING ARROW PANEL IS ADDED BETWEEN ADVANCE WARNING SIGN AND PROTECTION VEHICLE



## MOVING OPERATION CARAVAN

(OPERATIONS TRAVELING 3 MPH OR FASTER)

SPRAYING INTERSTATE & HIGH VOLUME MULTILANE DIVIDED ROADWAYS IN MEDIAN AND ON RIGHT SIDE W/PAVED SHOULDERS 10' OR WIDER

**GENERAL NOTES**

(1) THE FOLLOWING OPTIONS MAY BE USED AS THE FIRST ADVANCE WARNING THE MOTORIST'S SEES:

- A. TRUCK MOUNTED ADVANCE WARNING SIGNS
- B. MOVING CHANGEABLE MESSAGE SIGN (CMS)

(2) TOTAL DISTANCE BETWEEN FIRST AND LAST VEHICLE IN CARAVAN SHOULD BE APPROXIMATELY ONE (1) MILE IN LENGTH.

(3) SIGNS ON VEHICLES SHOULD BE MOUNTED A MINIMUM OF ONE (1) FOOT FROM THE GROUND AND SHOULD NOT BLOCK THE MOTORIST'S SIGHT OF THE FLASHING ARROW PANEL AND/OR LIGHT BAR.

(4) SIGN W20-1 SHOULD BE PLACED ON BACK OF PROTECTION VEHICLE AND SIGN W21-30SH ON BACK OF ADVANCE WARNING VEHICLE. IN MULTILANE DIVIDED TRAFFIC HO VEHICLES APPROACHING FROM REAR ARE NOTIFIED OF OPERATION.

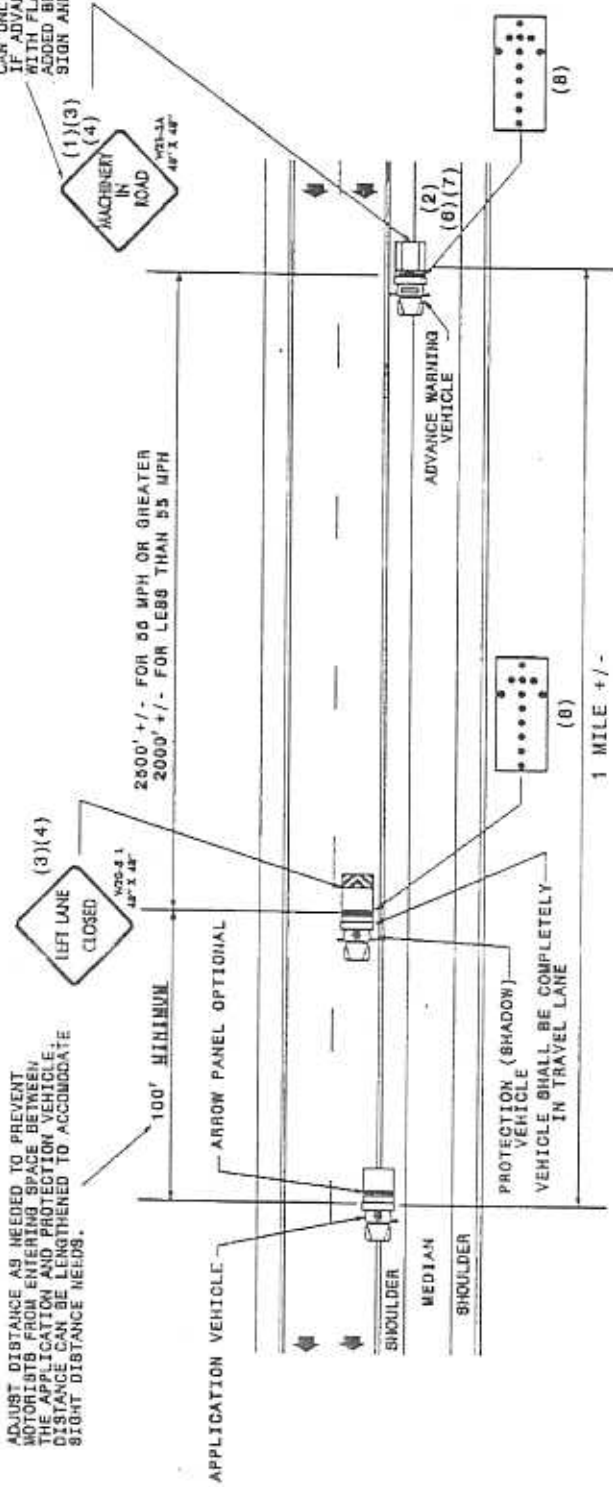
- (5) RADIO COMMUNICATION BETWEEN VEHICLES IS RECOMMENDED.
- (6) USE A LIGHT BAR OR ROTATING BEACON ON THE ADVANCE WARNING VEHICLES.
- (7) USE OF CMS'S ARE OPTIONAL WITH ADVANCED WARNING VEHICLES.
- (8) USE A TYPE "B" FLASHING ARROW PANEL.

| PANEL TYPE | MIN. SIZE |
|------------|-----------|
| B          | 80"X30"   |

**LEGEND**

- PORTABLE SIGN
- DIRECTION OF TRAFFIC FLOW
- APPLICATION VEHICLE WITH ROTATING BEACON
- PROTECTION VEHICLE WITH TRACK MOUNTED IMPACT ATTENUATOR (TMA) AND LIGHT BAR BEACON (SEE ROADWAY STANDARD NO. 1106.01)
- ADVANCE WARNING VEHICLE
- FLASHING ARROW PANEL TYPE "B" APPROPRIATE DIRECTION INDICATED

MAY BE SIGNS OR CMS BUT CAN ONLY BE GROUND MOUNTED IF ADVANCE WARNING VEHICLE WITH FLASHING ARROW PANELS ADDED BETWEEN ADVANCE WARNING SIGN AND PROTECTION VEHICLE



**MOVING OPERATION CARAVAN**  
(OPERATIONS TRAVELING 3 MPH OR FASTER)

SPRAYING OTHER MULTILANE DIVIDED ROADWAYS

IN MEDIAN AND ON RIGHT SIDE W/PAVED SHOULDERS LESS THAN 10' WIDE

### GENERAL NOTES

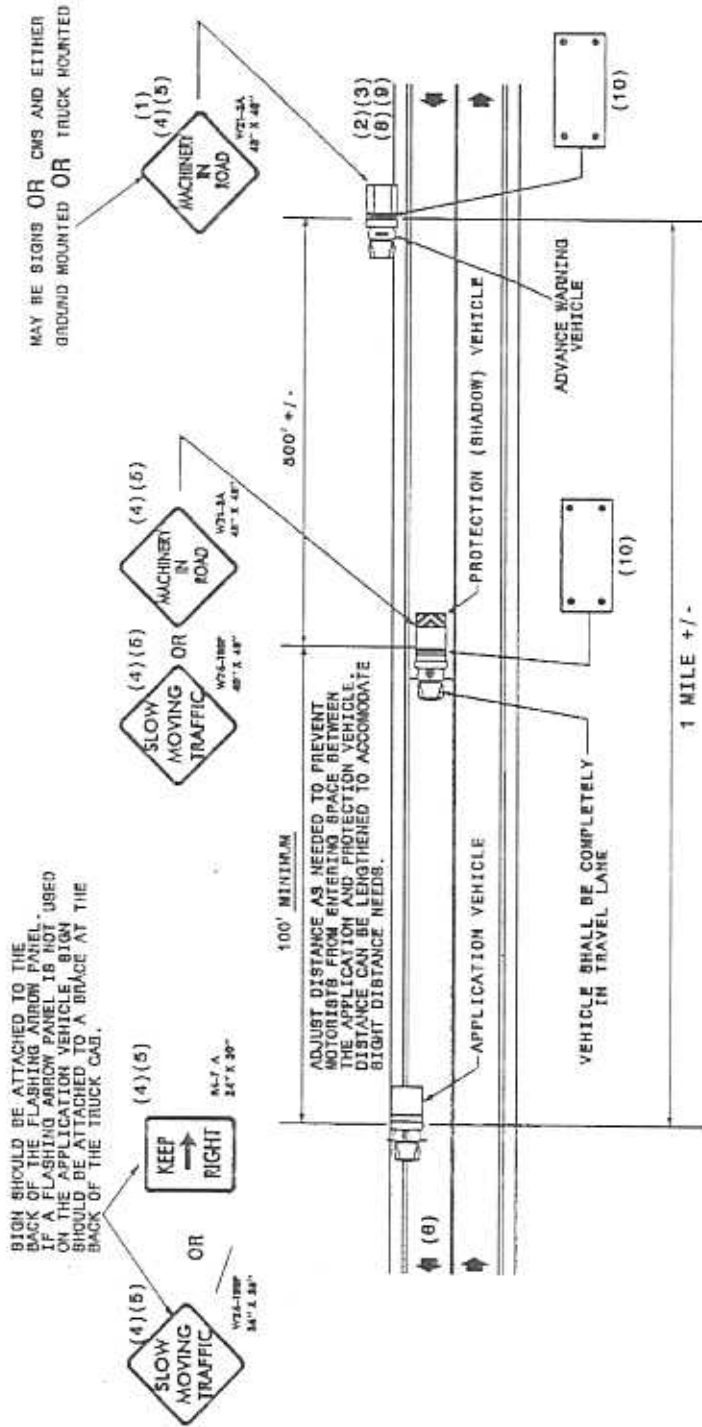
- (1) THE FOLLOWING OPTIONS MAY BE USED AS THE FIRST ADVANCE WARNING THE MOTORIST SEE:
  - A. TRUCK MOUNTED ADVANCE WARNING SIGNS
  - B. MOVING CHANGEABLE MESSAGE SIGN (CMS)
  - C. GROUND MOUNTED ADVANCE WARNING SIGNS (MUST USE "NEXT 10 MILES" AND MAKE CIRCLE TO PICK UP SIGNS)
  - D. STATIONARY CHANGEABLE MESSAGE SIGN (CMS) (MUST USE "NEXT 10 MILES" AND MAKE CIRCLE TO PICK UP CMS)
- (2) TOTAL DISTANCE BETWEEN FIRST AND LAST VEHICLE IN CARAVAN SHOULD BE APPROXIMATELY ONE (1) MILE IN LENGTH.
- (3) IF USING GROUND MOUNTED ADVANCE WARNING SIGNS OR STATIONARY CMS, THE TOTAL DISTANCE BETWEEN THE FIRST ADVANCE WARNING SIGN OR CMS AND APPLICATION VEHICLE SHOULD NOT EXCEED 10 MILES AND SIGN #21-38SP SHOULD READ "MACHINERY IN ROAD NEXT 10 MILES".
- (4) SIGNS ON VEHICLES SHOULD BE MOUNTED A MINIMUM OF ONE (1) FOOT FROM THE GROUND, AND SHOULD NOT BLOCK THE MOTORIST'S RIGHT OF THE FLASHING ARROW PANEL AND/OR LIGHT BAR.

- (5) SIGN #20-18SPOR RA-7A SHOULD BE PLACED ON FRONT OF THE APPLICATION VEHICLE AND SIGN #20-18SPOR #21-3A ON BACK OF THE PROTECTION VEHICLE IN TWO-LANE TWO-WAY TRAFFIC SO VEHICLE APPROACHING FROM THE FRONT AND REAR ARE NOTIFIED OF OPERATION.
- (6) IF A LEAD VEHICLE IS ADDED TO OPERATION IT SHOULD HAVE THE SAME ADVANCE WARNING SIGN AS THE APPLICATION VEHICLE SHOWN BELOW.
- (7) RADIO COMMUNICATION BETWEEN VEHICLES IS RECOMMENDED.
- (8) USE A LIGHT BAR OR ROTATING BEACON ON THE ADVANCE WARNING VEHICLES.
- (9) USE OF CMS'S ARE OPTIONAL WITH ADVANCED WARNING VEHICLES.
- (10) USE A TYPE "B" FLASHING ARROW PANEL.

PANEL TYPE MIN. SIZE  
B 60"X30"

### LEGEND

- PORTABLE SIGN
- ➔ DIRECTION OF TRAFFIC FLOW
- ⊠ APPLICATION VEHICLE WITH ROTATING BEACON
- ⊠ PROTECTION VEHICLE WITH TRUCK MOUNTED ADVANCE WARNING SIGN
- ⊠ ADVANCE WARNING VEHICLE WITH FLASHING ARROW PANEL, TYPE "B"



# MOVING OPERATION CARAVAN

(OPERATIONS TRAVELING 3 MPH OR FASTER)

SPRAYING TWO-LANE TWO-WAY ROADWAYS WITH ADT GREATER THAN 5000

### GENERAL NOTES

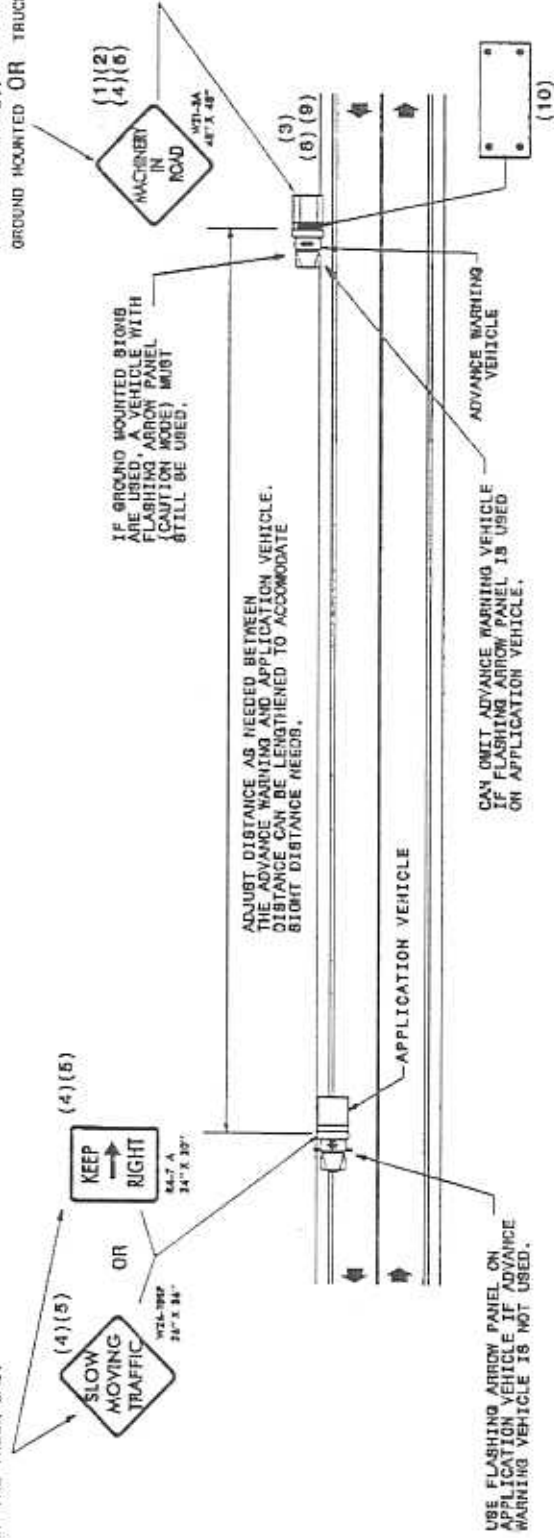
- (1) THE FOLLOWING OPTIONS MAY BE USED AS THE FIRST ADVANCE WARNING TO THE MOTORIST SEE:
  - A. TRUCK MOUNTED ADVANCE WARNING SIGNS
  - B. MOVING CHANGEABLE MESSAGE SIGN (CMS)
  - C. GROUND MOUNTED ADVANCE WARNING SIGN (MUST USE "NEXT 10 MILES" AND MAKE CIRCLE TO PICK UP SIGNS)
  - D. GROUND MOUNTED CHANGEABLE MESSAGE SIGN (CMS) (MUST USE "NEXT 10 MILES" AND MAKE CIRCLE TO PICK UP CMS)
- (2) TOTAL DISTANCE BETWEEN FIRST AND LAST VEHICLE IN CARAVAN SHOULD BE APPROXIMATELY ONE (1) MILE IN LENGTH.
- (3) IF USING GROUND MOUNTED ADVANCE WARNING SIGN OR STATIONARY CMS THE TOTAL DISTANCE BETWEEN THE FIRST ADVANCE WARNING SIGN OR CMS AND APPLICATION VEHICLE SHOULD NOT EXCEED 10 MILES AND SIGN W21-388P SHOULD READ "MACHINERY IN ROAD NEXT 10 MILES".
- (4) SIGNS ON VEHICLES SHOULD BE MOUNTED A MINIMUM OF ONE (1) FOOT FROM THE GROUND AND SHOULD NOT BLOCK THE MOTORIST'S SIGHT OF THE FLASHING ARROW PANEL AND/OR LIGHT BAR.
- (5) SIGNS W21-388P OR W4-7A SHOULD BE PLACED ON FRONT OF THE APPLICATION VEHICLE AND SIGN W21-388P ON BACK OF THE ADVANCE WARNING VEHICLE IN TWO-LANE TWO-WAY TRAFFIC SO VEHICLES APPROACHING FROM FRONT AND REAR ARE NOTIFIED OF OPERATION.
- (6) IF A LEAD VEHICLE IS ADDED TO OPERATION, IT SHOULD HAVE THE SAME ADVANCE WARNING SIGNS AS THE APPLICATION VEHICLE SHOWN BELOW.
- (7) RADIO COMMUNICATION BETWEEN VEHICLES IS RECOMMENDED.
- (8) USE A LIGHT BAR OR ROTATING BEACON ON THE ADVANCE WARNING VEHICLES.
- (9) USE OF CMS'S ARE OPTIONAL WITH ADVANCED WARNING VEHICLES.
- (10) USE A TYPE "B" FLASHING ARROW PANEL.

PANEL TYPE    MIN. SIZE  
 B                    60" X 30"

### LEGEND

- PORTABLE SIGN
- DIRECTION OF TRAFFIC FLOW
- APPLICATION VEHICLE WITH ROTATING BEACON
- ADVANCE WARNING VEHICLE 1-9' HIGH GROUP TRUCK WITH MOUNTED SIGN
- FLASHING ARROW PANEL, TYPE "B"

SIGN SHOULD BE ATTACHED TO THE BACK OF THE FLASHING ARROW PANEL. IF A FLASHING ARROW PANEL IS NOT USED ON THE APPLICATION VEHICLE, SIGN SHOULD BE ATTACHED TO A BRACE AT THE BACK OF THE TRUCK CAB.



## MOVING OPERATION CARAVAN

(OPERATIONS TRAVELING 3 MPH OR FASTER)  
 SPRAYING TWO-LANE TWO-WAY ROADWAYS  
 WITH ADT LESS THAN OR EQUAL TO 5000