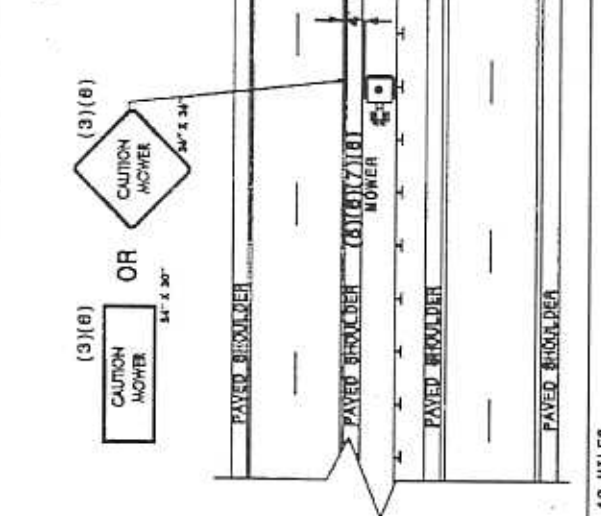
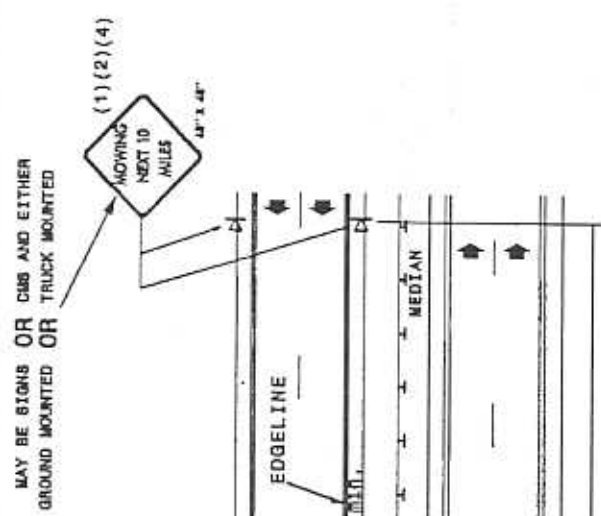


GENERAL NOTES

- (1) THE FOLLOWING OPTIONS MAY BE USED AS THE FIRST ADVANCE WARNING THE MOTORIST'S BEEB:
 - A. TRUCK MOUNTED ADVANCE WARNING SIGNS
 - B. MOVING CHANGEABLE MESSAGE SIGN (CMS)
 - C. GROUND MOUNTED ADVANCE WARNING SIGNS (MUST USE "NEXT 10 MILES" AND MAKE CIRCLE TO PICK UP SIGNS)
 - D. STATIONARY CHANGEABLE MESSAGE SIGN (CMS) (MUST USE "NEXT 10 MILES" AND MAKE CIRCLE TO PICK UP CMS)
- (2) IF USING GROUND MOUNTED ADVANCE WARNING SIGNS OR STATIONARY CMS, THE TOTAL DISTANCE BETWEEN THE FIRST ADVANCE WARNING SIGN OR CMS AND MOWING VEHICLE SHOULD NOT EXCEED 10 MILES AND SHOULD READ "MOWING NEXT 10 MILES".
- (3) SIGNS ON VEHICLES SHOULD BE MOUNTED A MINIMUM OF ONE (1) FOOT FROM THE GROUND AND SHOULD NOT BLOCK THE MOTORIST'S SIGHT OF THE LIGHT BAR.
- (4) GROUND MOUNTED SIGNS MUST BE MOUNTED A MINIMUM OF FIVE (5) FEET FROM THE GROUND TO THE BOTTOM OF THE SIGN.

- LEGEND**
- ▲ CONE
 - ⊠ PORTABLE SIGN
 - ⇄ DIRECTION OF TRAFFIC FLOW
 - ◻ MOWING VEHICLE WITH LIGHT BAR



10 MILES

MOWING OPERATION

INTERSTATE AND MULTILANE DIVIDED FACILITIES

LOCATION: MEDIAN WITH TIRE OF MOWING VEHICLE FOUR FEET (4') OR MORE FROM EDGELINE
 VOLUME: ANY VOLUME
 SPEED: ANY SPEED

GENERAL NOTES

- (1) THE FOLLOWING OPTIONS MAY BE USED AS THE FIRST ADVANCE WARNING THE MOTORISTS BEES:
 - A. TRUCK MOUNTED ADVANCE WARNING SIGNS
 - B. MOVING CHANGEABLE MESSAGE SIGN (CMS)
 - C. GROUND MOUNTED ADVANCE WARNING SIGNS (MUST BE NEXT TO MILES AND MAKE CIRCLE TO PICK UP SIGNS)
 - D. STATIONARY CHANGEABLE MESSAGE SIGN (CMS) (MUST USE 'NEXT 10 MILES' AND MAKE CIRCLE TO PICK UP CMS)
- (2) IF USING GROUND MOUNTED ADVANCE WARNING SIGNS OR STATIONARY CMS THE TOTAL DISTANCE BETWEEN THE FIRST ADVANCE WARNING SIGN OR CMS AND MOWING VEHICLE SHOULD NOT EXCEED 10 MILES AND SHOULD READ 'MOWING AHEAD NEXT 10 MILES'.
- (3) SIGNS ON VEHICLES SHOULD BE MOUNTED A MINIMUM OF ONE (1) FOOT FROM THE GROUND AND SHOULD NOT BLOCK THE MOTORIST'S SIGHT OF THE LIGHT BAR.
- (4) GROUND MOUNTED SIGNS MUST BE MOUNTED A MINIMUM OF FIVE (5) FEET FROM THE GROUND TO THE BOTTOM OF THE SIGN.
- (5) USE A LIGHT BAR ON TOP OF CAB AND TWO OUTSIDE BLINKING AMBER LIGHTS VISIBLE FROM BOTH DIRECTIONS ON ALL MOWERS.
- (6) USE "CAUTION MOWER" ON REAR OF EACH MOWER.
- (7) MOWING OPERATIONS ARE RESTRICTED TO DAYLIGHT HOURS.
- (8) WHEN TRAVELING FROM ONE SIDE OF A BRIDGE TO ANOTHER, BOTH MOWER AND TRAILER MUST WAIT FOR A BREAK IN TRAFFIC AND MOVE OUT INTO THE TRAVELWAY SIMULTANEOUSLY TO GET TO THE OTHER SIDE.
- (9) USE A TYPE "B" FLASHING ARROW PANEL.

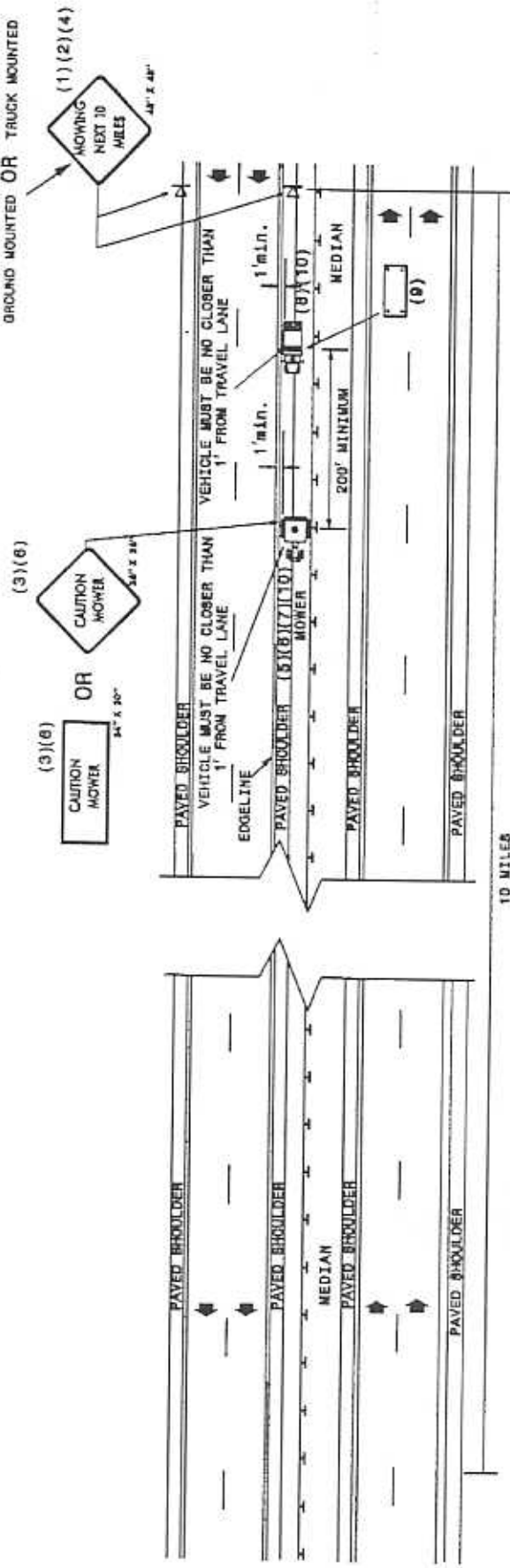
PANEL TYPE MIN. SIZE
B 60" X 30"

- (10) IF MOWING VEHICLE OR TRUCK MOUNTED IMPACT ATTENUATOR ARE CLOSER THAN 1' TO EDGE LINE, MOWING OPERATION DRAWING NUMBER 3 OR 5 MUST BE USED. IF MOWING VEHICLE IS 4' OR MORE FROM EDGE LINE, MOWING OPERATION DRAWING NUMBER 1 OF 5 MAY BE USED.

LEGEND

- ▲ CONE
- K PORTABLE SIGN
- ⇨ DIRECTION OF TRAFFIC FLOW
- ☐ MOWING VEHICLE WITH LIGHT BAR
- ☐ PROTECTION VEHICLE WITH TRUCK MOUNTED IMPACT ATTENUATOR (TMA) AND LIGHT BAR (SEE AAS NO. 1168.01)
- ☐ FLASHING ARROW PANEL, TYPE "B"
- ☐ CAUTION MOWER

MAY BE SIGNS OR CMS AND EITHER GROUND MOUNTED OR TRUCK MOUNTED



10 MILES

MOWING OPERATION

INTERSTATE AND MULTILANE DIVIDED FACILITIES
 LOCATION: MEDIAN WITH MOWING VEHICLE & TMA LESS THAN FOUR (4) FEET BUT NO CLOSER THAN ONE (1) FOOT FROM EDGE LINE
 VOLUME: ANY VOLUME
 SPEED: ANY SPEED

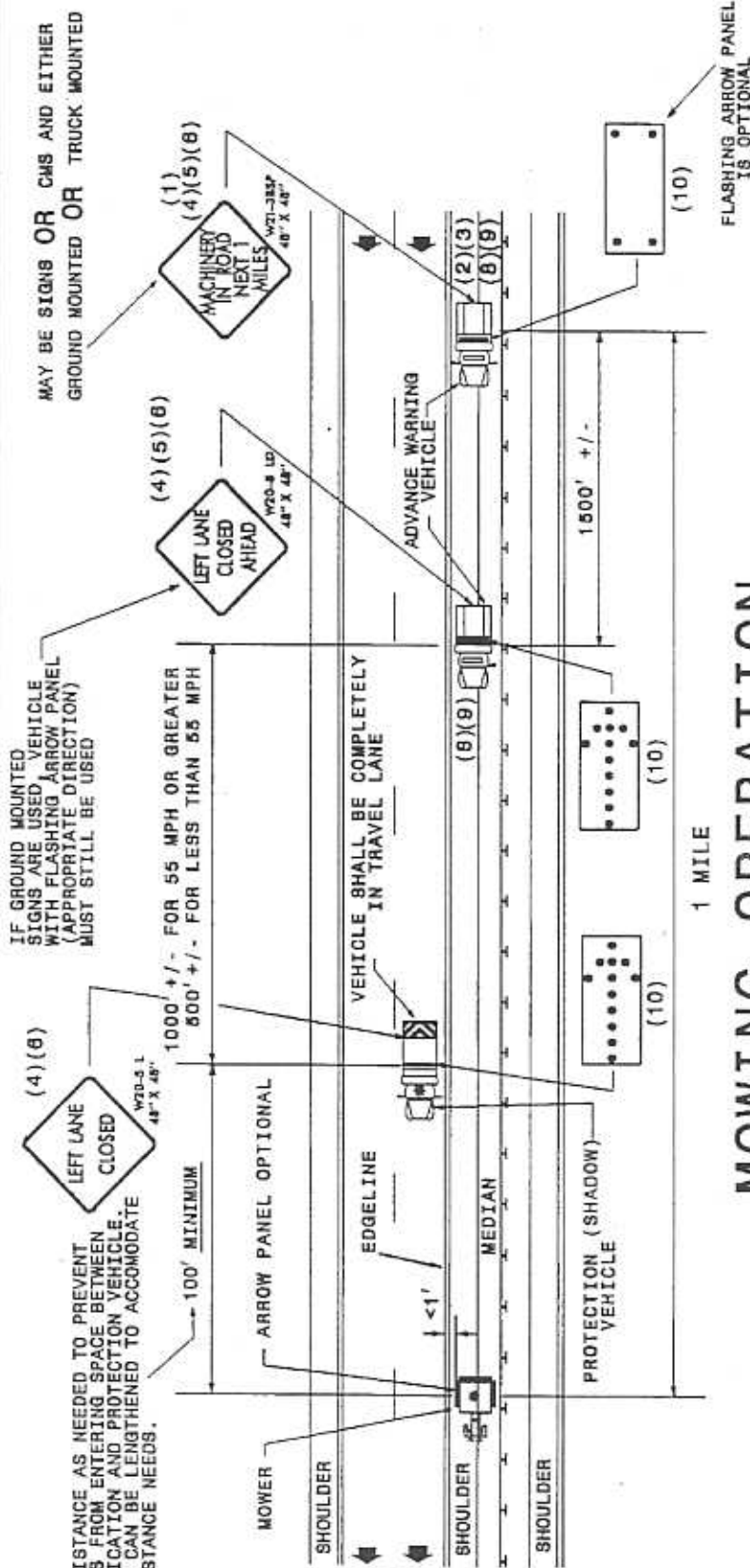
GENERAL NOTES

- (1) THE FOLLOWING OPTIONS MAY BE USED AS THE FIRST ADVANCE WARNING FROM THE GROUND AND SHOULD NOT BLOCK THE MOTORIST'S SIGHT OF THE FLASHING ARROW PANEL AND/OR LIGHT BAR.
 - A. TRUCK MOUNTED ADVANCE WARNING SIGNS
 - B. MOVING CHANGEABLE MESSAGE SIGN (CMS)
 - C. GROUND MOUNTED ADVANCE WARNING SIGN (MUST USE 'NEXT 10 MILES' AND MAKE CIRCLE TO PICK UP SIGNS)
 - D. STATIONARY CHANGEABLE MESSAGE SIGN (CMS) (MUST USE 'NEXT 10 MILES' AND MAKE CIRCLE TO PICK UP CMS)
- (2) TOTAL DISTANCES BETWEEN FIRST AND LAST VEHICLE IN CARAVAN SHOULD NOT EXCEED ONE (1) MILE IN LENGTH.
- (3) IF USING GROUND MOUNTED ADVANCE WARNING SIGNS OR STATIONARY CMS, THE TOTAL DISTANCE BETWEEN THE FIRST ADVANCE WARNING SIGN OR CMS AND APPLICATION VEHICLE SHOULD NOT EXCEED 10 MILES AND SIGN W21-38SP SHOULD READ 'MACHINERY IN ROAD NEXT 10 MILES'.
- (4) SIGNS ON VEHICLES SHOULD BE MOUNTED A MINIMUM OF ONE (1) FOOT FROM THE GROUND AND SHOULD NOT BLOCK THE MOTORIST'S SIGHT OF THE FLASHING ARROW PANEL AND/OR LIGHT BAR.
- (5) GROUND MOUNTED SIGNS MUST BE MOUNTED A MINIMUM OF FIVE (5) FEET FROM THE GROUND TO THE BOTTOM OF THE SIGN.
- (6) SIGN W20-5L SHOULD BE PLACED ON BACK OF PROTECTION VEHICLE AND SIGN W20-LD ON BACK OF ADVANCE WARNING VEHICLE IN MULTILANE DIVIDED TRAFFIC SO VEHICLES APPROACHING FROM REAR ARE NOTIFIED OF OPERATION.
- (7) RADIO COMMUNICATION BETWEEN VEHICLES IS RECOMMENDED.
- (8) USE A LIGHT BAR OR ROTATING BEACON ON THE ADVANCE WARNING VEHICLES.
- (9) USE OF CMS'S ARE OPTIONAL WITH ADVANCED WARNING VEHICLES.
- (10) USE A TYPE "B" FLASHING ARROW PANEL.

PANEL TYPE	MIN. SIZE
B	60" X 30"

LEGEND

- ▲ CONE
- Ⓚ PORTABLE SIGN
- ☐ MOVING VEHICLE WITH LIGHT BAR
- ☐ PROTECTION VEHICLE WITH TRACK LIGHT BAR (SEE ROAD NO. 1104.01)
- ☐ ADVANCE WARNING VEHICLE
- ☐ FLASHING ARROW PANEL, TYPE "B" CAUTION WOOD
- ☐ FLASHING ARROW PANEL, TYPE "B" APPROPRIATE DIRECTION INDICATED



MAY BE SIGNS OR CMS AND EITHER GROUND MOUNTED OR TRUCK MOUNTED

FLASHING ARROW PANEL IS OPTIONAL

MOWING OPERATION

INTERSTATE AND MULTILANE DIVIDED FACILITIES IN AREAS WITH LIMITED SHOULDER AND GUARDRAIL

LOCATION: MEDIAN WITH TIRE OF MOWING VEHICLE CLOSER THAN ONE (1) FOOT TO EDGE LINE

VOLUME: ANY VOLUME
SPEED: ANY SPEED