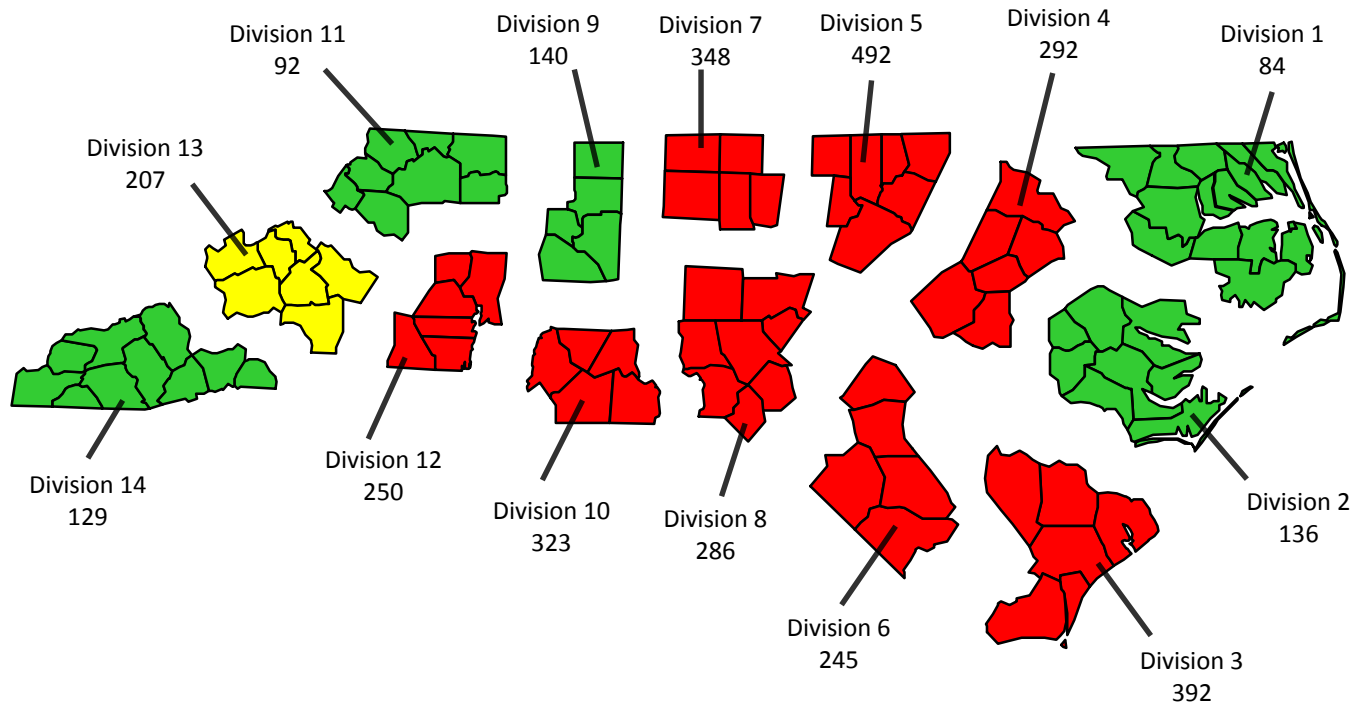


**Traffic Data Collection – Total Counts**  
**(6/1/2015 – 12/31/2017)**

<b>Data Collection Type</b>	<b>Counts</b>
Turning Movement	3,416
Volume/Speed/Class	1,207
Classification	269
Compliance	79
Delay	48
Spot Speed	47
All Others	116
<b>TOTAL</b>	<b>5,182</b>

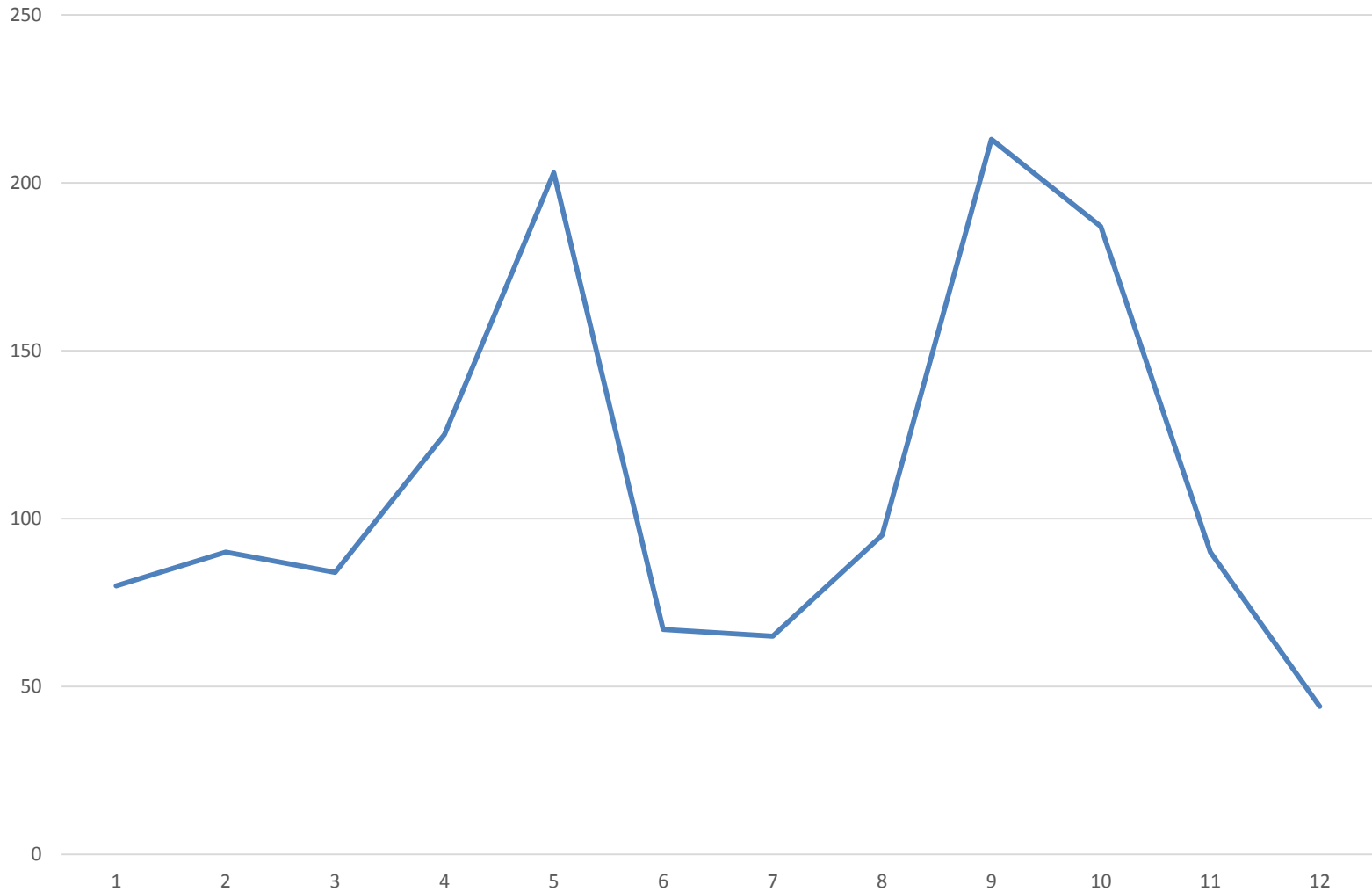
# Turning Movement Counts by Division (6/1/2015 – 12/31/2017)



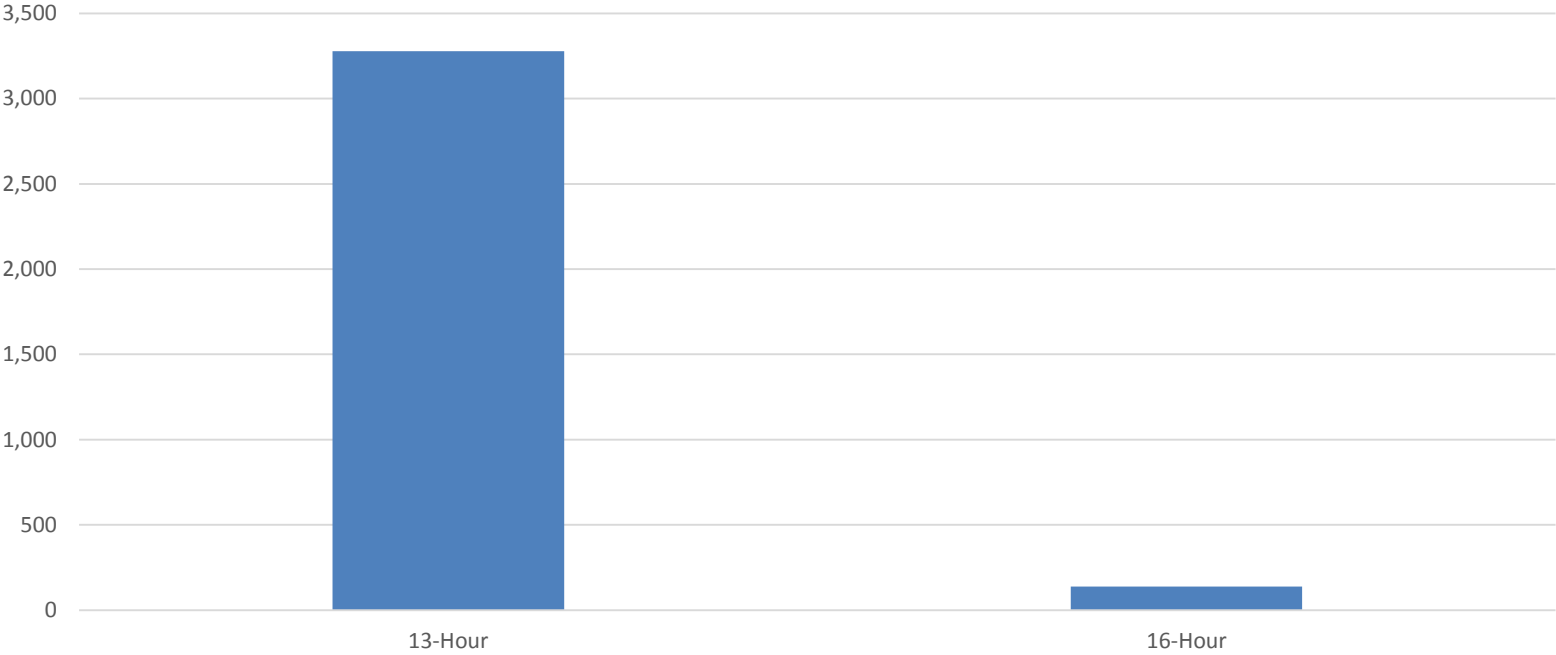
■ =0-75    ■ =76-150    ■ =151-225    ■ =226+

Total Turning Movement Counts = 3,416

# Turning Movements – Average by Month (6/1/2015 – 12/31/2017)

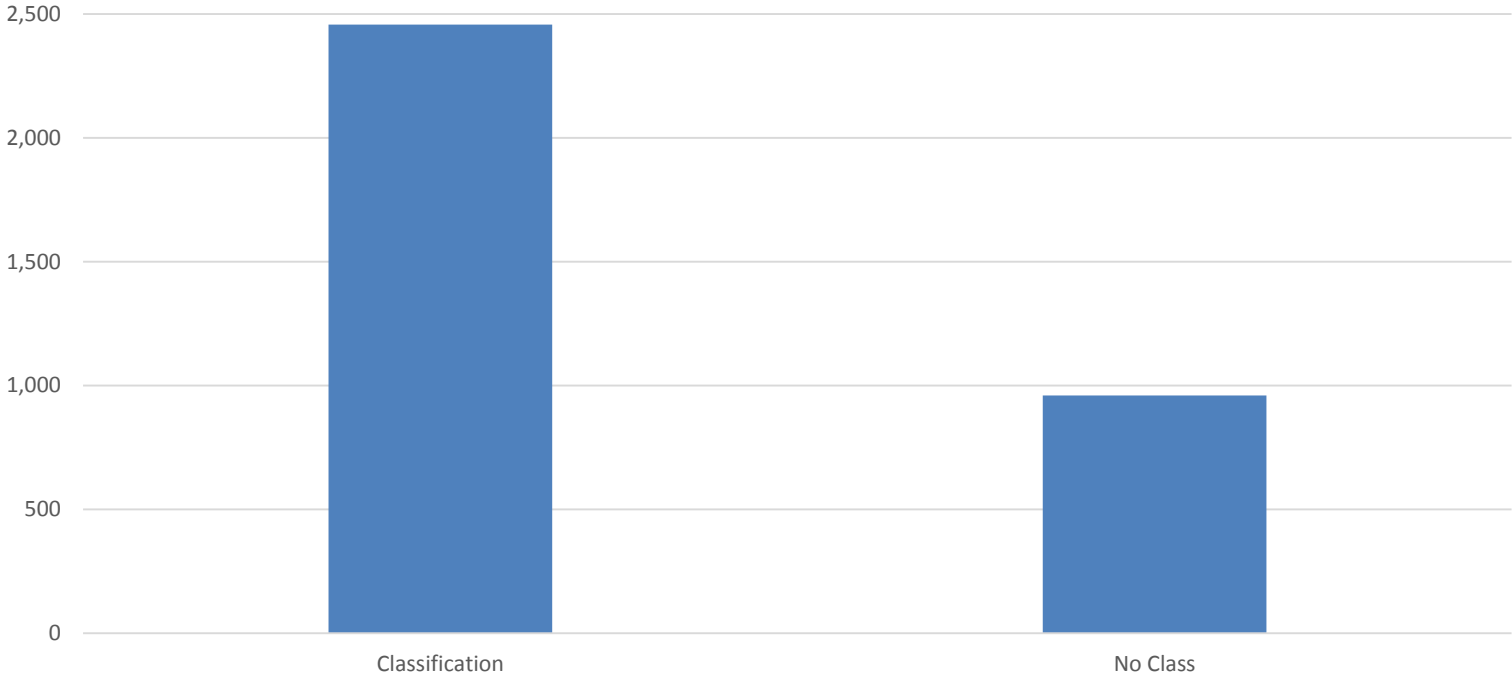


# Turning Movements – Totals by Hours (6/1/2015 – 12/31/2017)



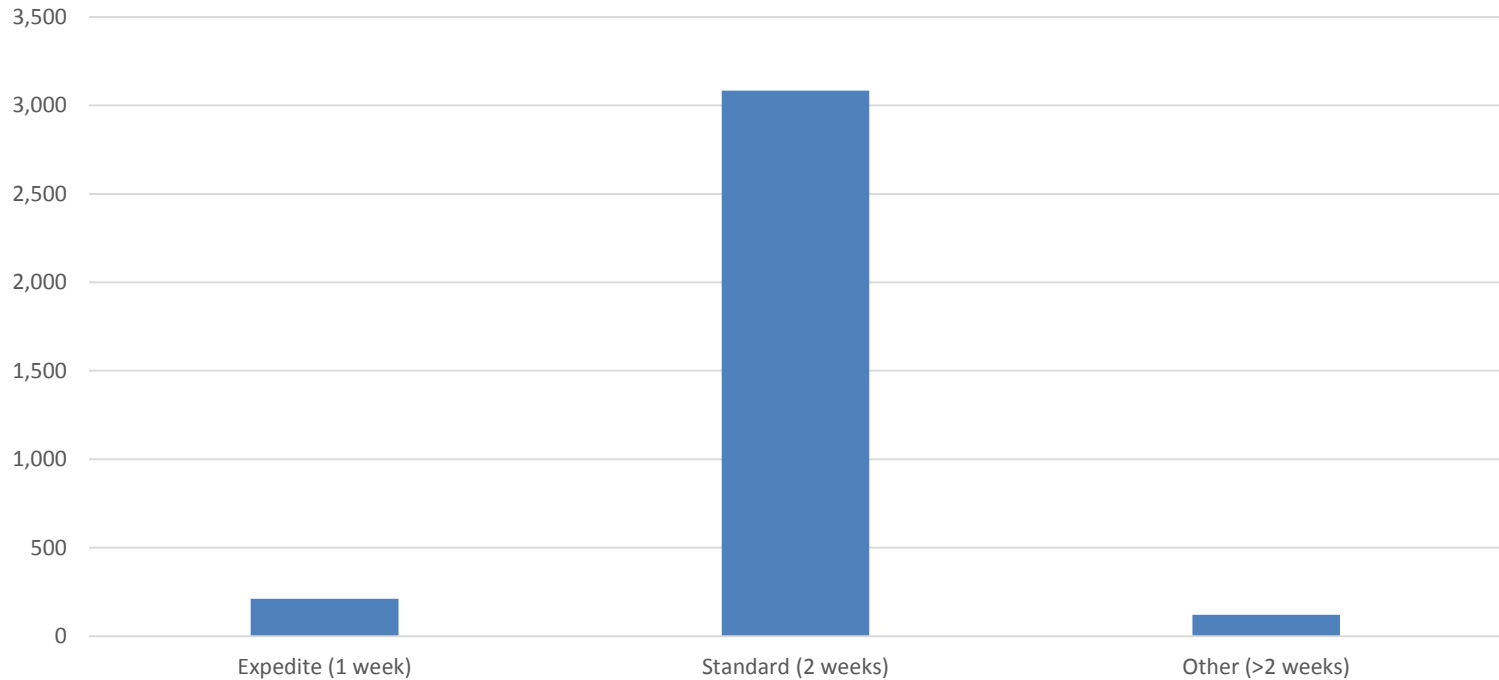
Duration	Quantity	Percent
13-Hour	3,277	96%
16-Hour	139	4%
Total	3,416	100%

# Turning Movements – Totals by Class/Non-Class (6/1/2015 – 12/31/2017)



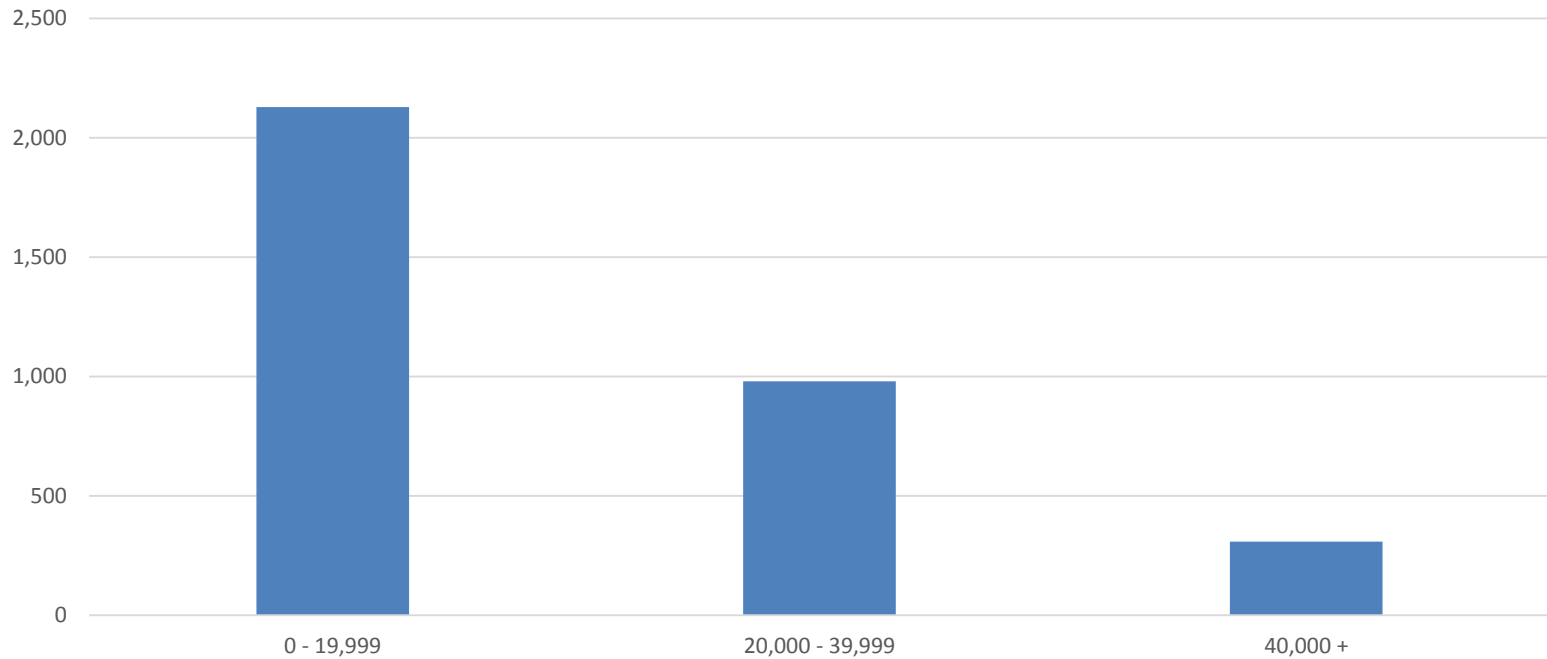
Class	Quantity	Percent
Classification	2,457	72%
No Class	959	28%
Total	3,416	100%

# Turning Movements – Totals by Expedite/Standard (6/1/2015 – 12/31/2017)



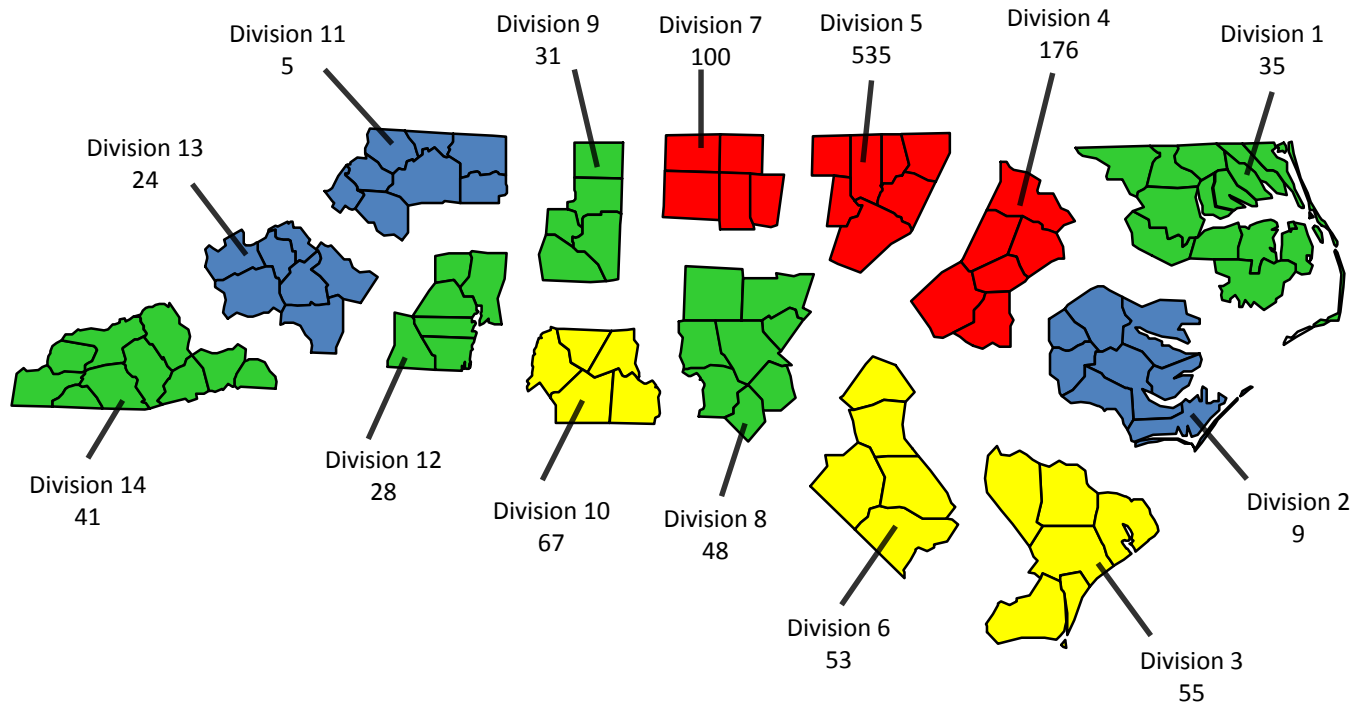
Time	Quantity	Percent
Expedite (1 week)	211	6%
Standard (2 weeks)	3,084	90%
Other (>2 weeks)	121	4%
Total	3,416	100%

# Turning Movements – Totals by Volume (6/1/2015 – 12/31/2017)



Class	Quantity	Percent
0 - 19,999	2,128	62%
20,000 - 39,999	980	29%
40,000 +	308	9%
Total	3,416	100%

# Volume/Speed/Class Counts by Division (6/1/2015 – 12/31/2017)

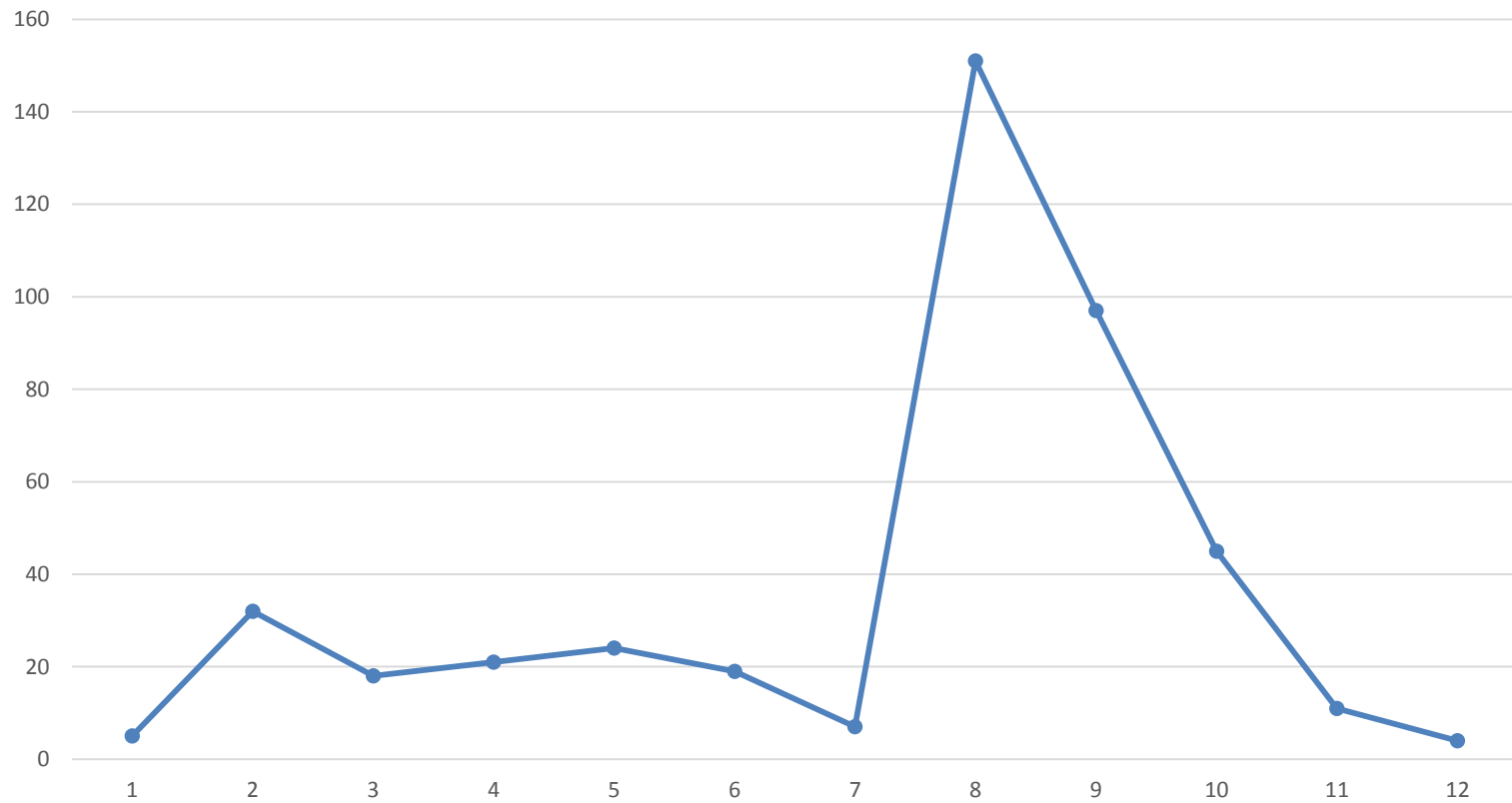


■ =0-25     
 ■ =26-50     
 ■ =51-75     
 ■ =76+

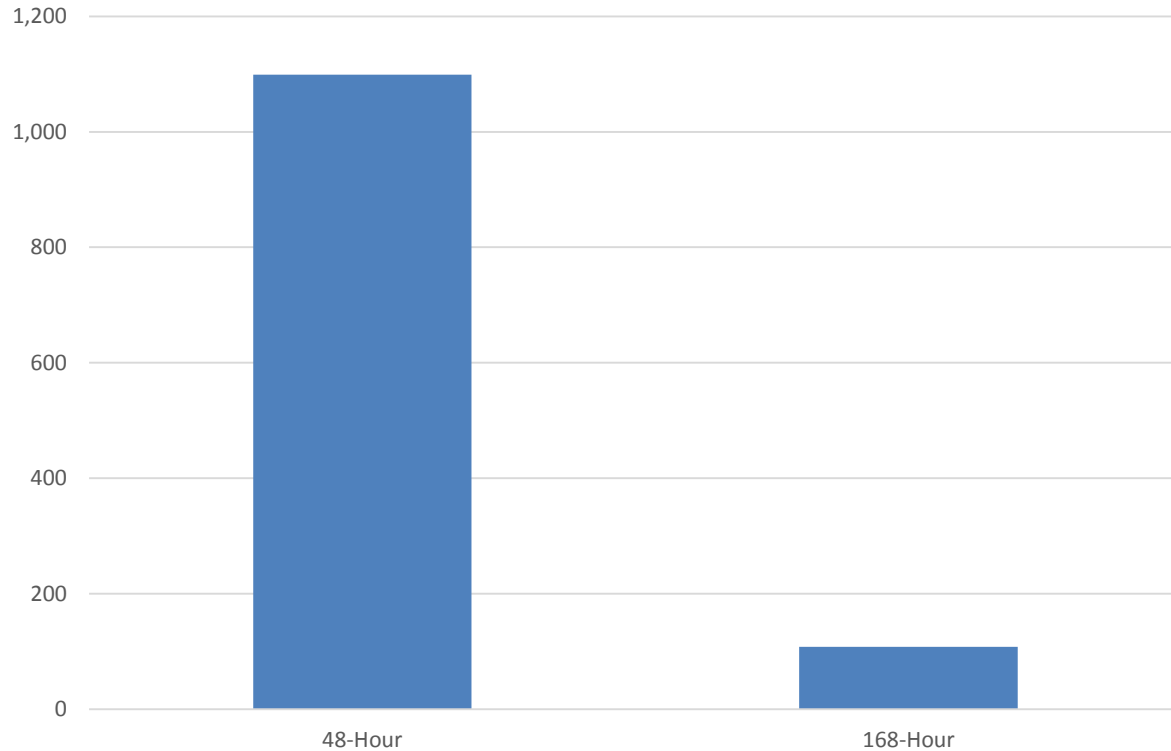
Total Volume/Speed/Class Counts = 1,207



# Volume/Speed/Class – Average by Month (6/1/2015 – 12/31/2017)



# Volume/Speed/Class – Totals by Hours (6/1/2015 – 12/31/2017)



Duration	Quantity	Percent
48-Hour	1,099	91%
168-Hour	108	9%
Total	1,207	100%