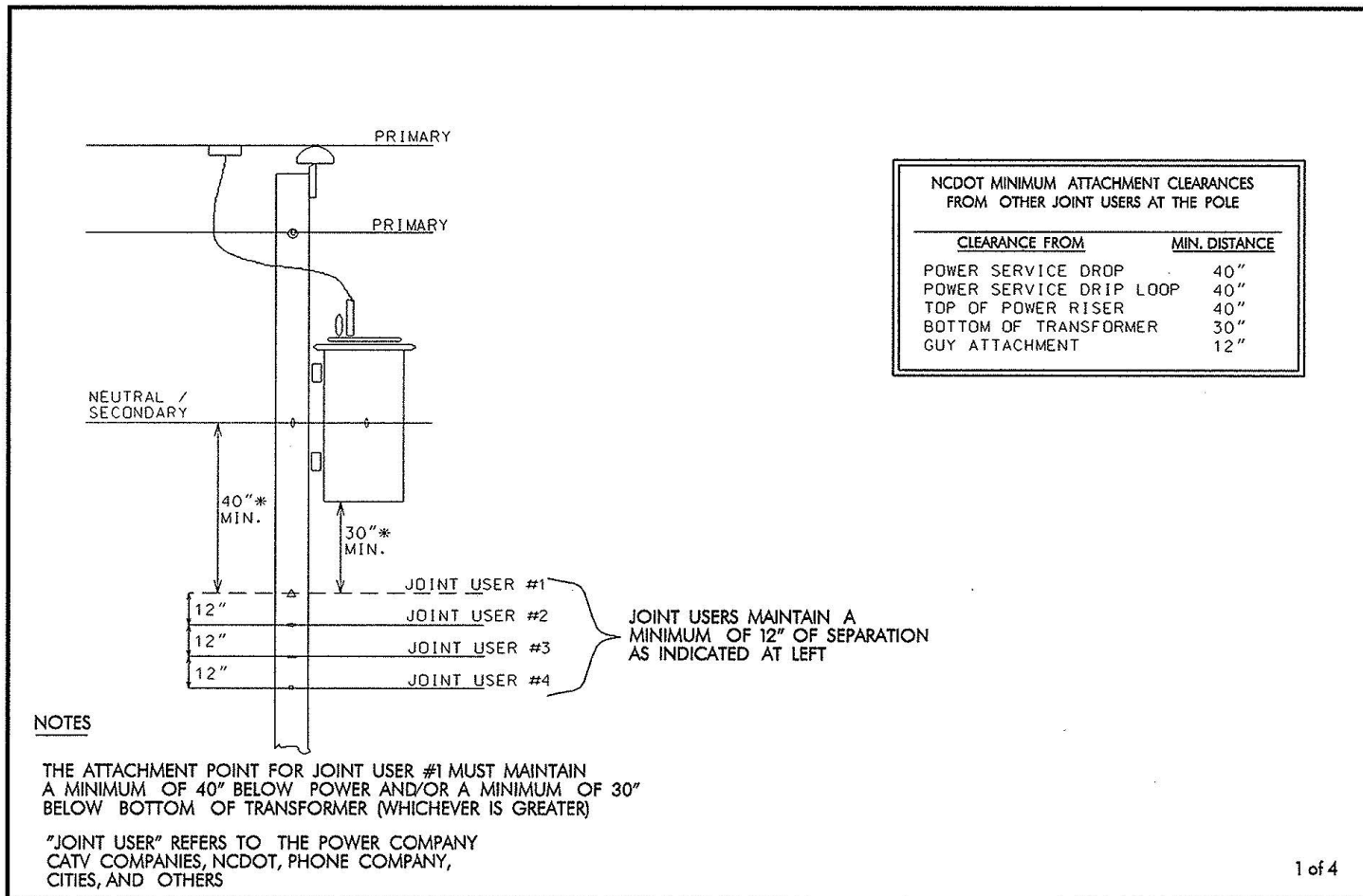
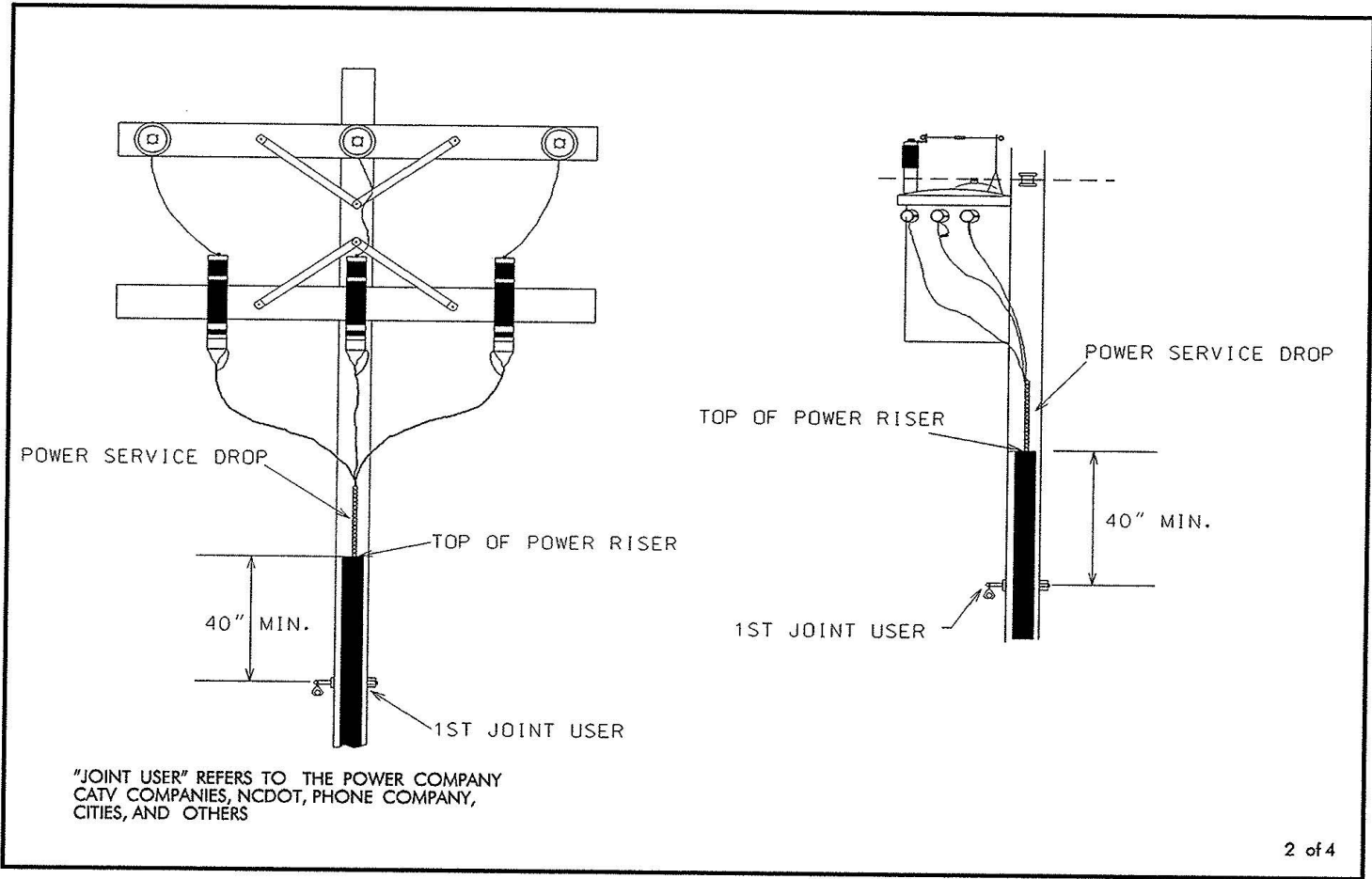


APPENDIX B – MINIMUM UTILITY CLEARANCE REQUIREMENTS

APPENDIX B MINIMUM UTILITY CLEARANCE REQUIREMENTS





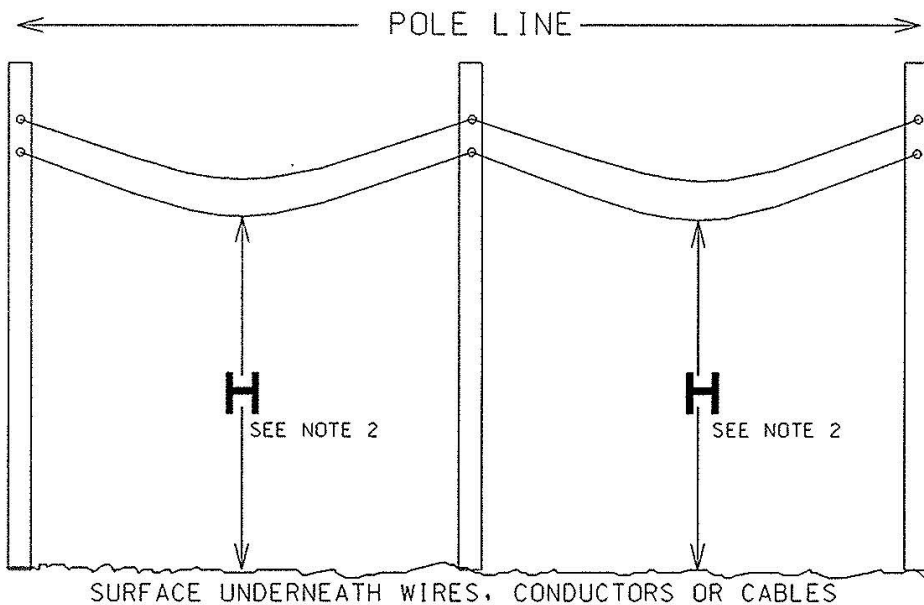


TABLE 1

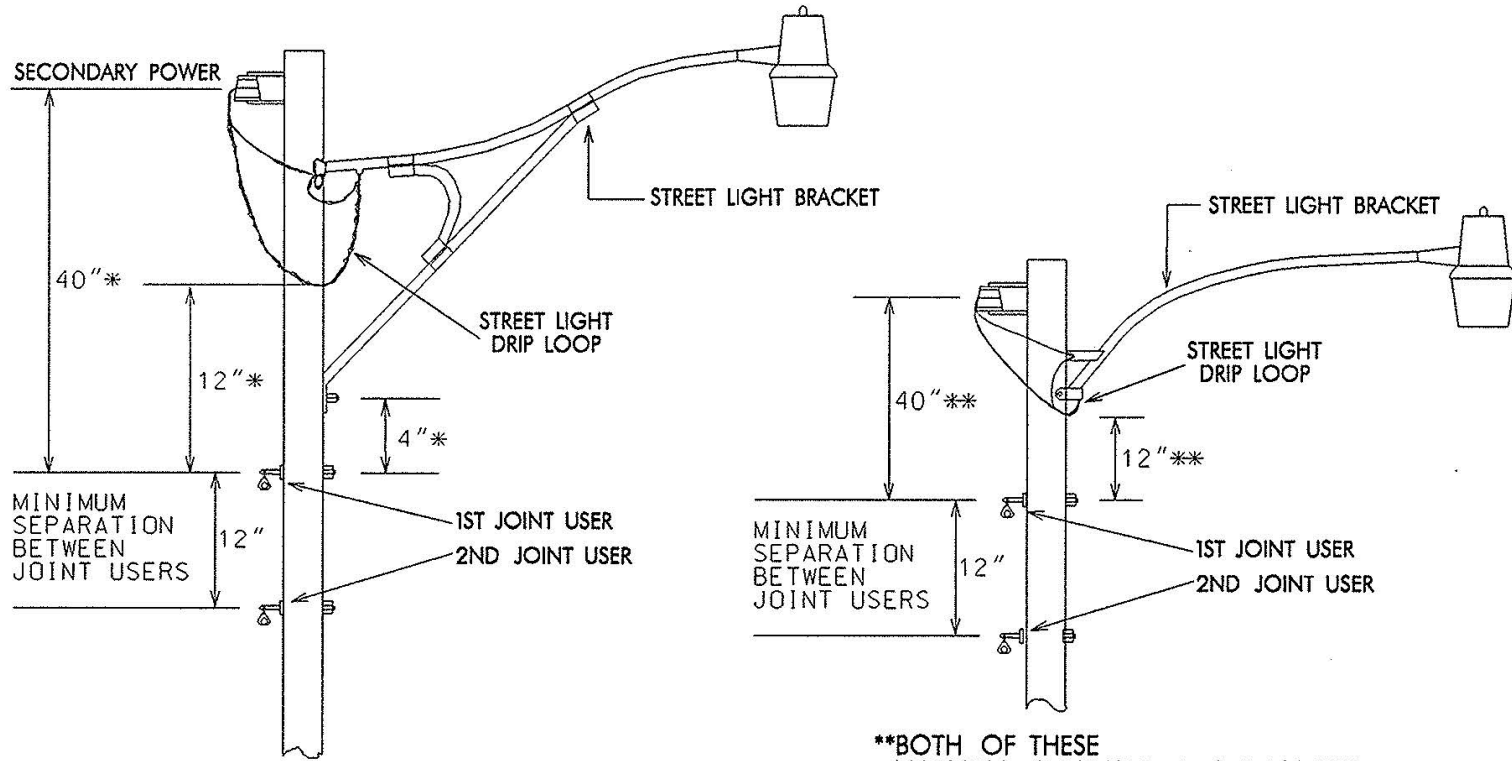
NATURE OF SURFACE UNDERNEATH WIRES, CONDUCTORS OR CABLES	MINIMUM CLEARANCE (H)*
1. TRACK RAILS OF RAILROADS EXCEPT ELECTRIFIED RAILROADS USING OVERHEAD TROLLEY CONDUCTORS	30 FT
2. ROADS, STREETS AND OTHER AREAS SUBJECT TO TRUCK TRAFFIC	18 FT
3. DRIVEWAYS, PARKING LOTS, AND ALLEYS	18 FT
4. OTHER LAND TRAVERSED BY VEHICLES SUCH AS CULTIVATED, GRAZING, FOREST ORCHARDS, ETC.	18 FT
5. SPACES AND TRAVEL WAYS SUBJECT TO PEDESTRIAN OR RESTRICTED TRAFFIC ONLY	15.5 FT
6. CONTROLLED ACCESS ROADWAYS	24 FT

* THESE VALUES HAVE BEEN ADOPTED BY NCDOT (AS WELL AS VARIOUS UTILITY COMPANIES) AND EXCEED THE SPECIFICATIONS AS SET FORTH IN THE NATIONAL ELECTRICAL SAFETY CODE (NEC).

NOTES:

1. SEE TABLE 1 FOR ACCEPTABLE MINIMUM CLEARANCE VALUES (H) OVER VARYING SURFACES
2. "H" IS DEFINED AS THE VERTICAL DISTANCE (HEIGHT) AS MEASURED FROM THE LOWEST POINT (TYPICALLY MIDSPAN) OF THE WIRES, CONDUCTORS OR CABLES TO THE SURFACE BELOW
3. SAG BETWEEN POLES SHOULD BE MATCHED TO THAT OF THE SURROUNDING UTILITIES

STREET LIGHT CLEARANCES



* ALL THREE OF THESE
MINIMUM CLEARANCE REQUIREMENTS
AT STREET LIGHTS MUST BE MET

"JOINT USER" REFERS TO THE POWER COMPANY
CATV COMPANIES, NCDOT, PHONE COMPANY,
CITIES, AND OTHERS

***BOTH OF THESE
MINIMUM CLEARANCE REQUIREMENTS
AT STREET LIGHTS MUST BE MET